

110 PHOTOVOLTAIC PANELS INSTALLED



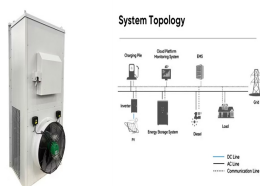
How to install solar panels wiring . Solar panel wiring installation is not overly complicated if you understand basic electricity procedures. First, there is a positive wire and a grounding wire. Most solar components have a port for a positive wire and a grounding wire. Next, you would use a ferrule to attach the wires to the components



This guide covers a wide range of topics related to installing Renogy solar panels from identifying the specifications of your solar panel and selecting a suitable junction box to mechanical and electrical installation ???



110-Watt Polycrystalline Solar Panel with 300-Watt Power Inverter and 11 Amp Charge Controller (110) Questions & Answers (84) Hover Image to Zoom. Share. I installed the solar panel on the top of my truck topper and connected the charge controller to a 12v battery along with the inverter. This allows me to keep my power tool batteries



Solar panel costs are decreasing. According to the latest UK government data [1], the cost of solar panels in the UK is at its lowest level in almost 2 years fact, between March 2023 and 2024, the median cost per kilowatt (kW) for a 0 to 4kW solar panel system has dropped more than 20 per cent.. Combine that with the falling costs of solar battery storage, and the ???



The average cost of solar panels in Ireland varies based on the system size, panel type, and installation factors. Typically, a residential solar PV system ranges from ???6,000 to ???13,000, including installation. This range ???

110 PHOTOVOLTAIC PANELS INSTALLED



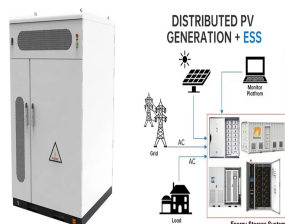
flow of electricity. Solar panels don't need direct sunlight and can work on cloudy days, but they'll generate more electricity in strong sunlight. A typical solar PV system is made up of around 10 panels, which each generate around 355W of power in strong sunlight. The panels generate direct current (DC) electricity, and then a device



In recent years, solar panels have become more popular than ever before, with the UK seeing more than 17,000 new solar installations each month so far in 2023. This isn't surprising, given that solar panels can dramatically cut your energy bills and even make you self-sufficient. With energy bills at an all-time high, a solar panel installation will pay for itself faster than it has ???



During the installation process, the photovoltaic panels are mounted on the roof or on a ground-mounted system, and the wiring and electrical components are installed. Once the system is installed, it will need to be connected to the electrical grid ???



In this guide, we'll explain a typical solar panel installation from start to finish, as well as what all the hardware does, and where on your property you can install the panels. If you're interested in how much you could save ???



Result of the calculation is the minimum number of PV panels. If more PV modules are installed, the system will perform better and battery life will be improved. 110 Wp PV module. 1. Determine power consumption demands. Total appliance use = $(18 \text{ W} \times 4 \text{ hours}) + (60 \text{ W} \times 2 \text{ hours}) + (75 \text{ W} \times 24 \times 0.5 \text{ hours}) = 1,092 \text{ Wh/day}$: Total PV panels energy

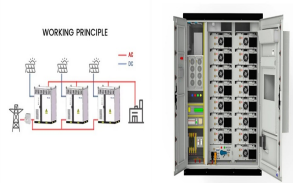
110 PHOTOVOLTAIC PANELS INSTALLED



On the other hand, if you're connecting 42 x EcoFlow 400W rigid solar panels to 3 x DELTA Pro Ultra Inverters + Home Backup batteries, the diagram will be considerably more complicated.. For solar panel arrays with more than a few panels, you're going to need to take the particulars of your installation area into account to optimize performance.



If you want the complete kit to professionally install your solar panel choose a 110W MHD Flexi Roof and Deck Top Kit to get best value. The MHD Flexi roof and deck top kits come with a 10Ah PWM charge controller (dual battery) and adhesive, or upgrade to the 15A (dual battery), 20A or 30A MPPT Pro Plus (single battery) charge controllers.



Use our solar panel calculator to find your solar power needs and what panel size would meet them. The average installation cost for an 8 kW system is \$25,680. Dividing this by yearly electricity cost, we see that the solar panels for home use would return the investment after nearly 23 years.



Solar panel brackets. Solar panel inverter. Solar panel brackets. Installation i.e. labour costs of the installer. Cost of the solar battery storage system (although this is optional). Short answer: the average UK cost of a new domestic solar install is somewhere between ?5,000 and ?10,000. How much is a single solar panel in the UK?



1. Calculate Your Power Load. If you haven't already, you'll need to calculate the total power you need from your solar panel system. The power load necessary for a home backup system will look much different from the energy consumption of a small van or camping trip.. Go through each device and appliance you want to run and check the instruction manual ???

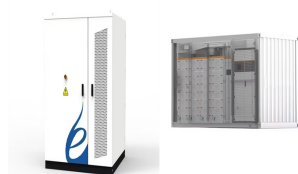
110 PHOTOVOLTAIC PANELS INSTALLED



At Otovo, there is no standard solar panel installation, as all of our experts' recommendations are tailor-made for your home. Get a free quote! How solar panels are installed. Solar panels are typically installed on the roof, which means that the shape and orientation of the latter should be studied beforehand. Just as important will be the



This will give the solar panel mounts a stable foundation, and will make sure they don't get damaged in stormy weather. Solar panel mounts are secured ??? Once the roof anchors have been fixed to the property, the installer will attach the solar panel mounting system to them. The framework will run both vertically and horizontally across the



The Mount system is an aerodynamic, low profile track that allows your solar panel to be installed and removed in seconds. This set of Mounts is designed to carry one 100w Sun Power Flexible Solar Panel on a flat mounting surface. Mount Dimensions Parallel: 50L x 24.5W x 1H inches Perpendicular: 25L x 49.5W x 1H inches *If your vehicle/camper



The unique multi-peak characteristic of vertically installed bifacial photovoltaic (VI-BiPV) panels has been a focal point in numerous theoretical analyses, predicting a symmetrical power profile for such vertically oriented BiPV modules [24, 40]. Through the defined mathematical framework (Equations 1??3), we modeled the power output profile of BiPV ???



However, it is still important to learn how to properly install a PV connector, since in some cases or sections, the system may require you to make the connection yourself. This will probably occur if you do not find an MC4 extension cable with the right length. Connect solar panel strings in parallel by using a connector known as MC4 T

110 PHOTOVOLTAIC PANELS INSTALLED



Solar panel installation. What you need to know to work safely . HEALTH AND SAFETY . GS001 04/19 2 . Working at height . ??? The use of 110 v centre tapped earth or cordless portable equipment is preferred. If you are using 230/240 v power tools and equipment, ensure they are undamaged and a residual current device (RCD) is used.



As seen on Ideal for pre-wired RV's with a Cable Entry Plate and pre-installed solar controller. Go Power! Solar Flex??? panels are aerodynamic and DURABLE - a virtually unbreakable solar battery charger that's perfect for work trucks, long-haul trailers and sleeper cabs. 110 watt Solar Flex Expansion Panel by Go Power! \$470.00 USD



For details on how to set up a single solar panel, see Renogy Single 100W Solar Panel Off-Grid Installation. For how to hook up solar panels specific to application and purpose, see Renogy Solar Panel Installation ???



Receive a custom permit design for a solar panel system prepared by an experienced technician. This personalized solar design helps you to make an informed, unbiased decision to find the best system at the lowest cost. Understand your options for residential or commercial modules, on-grid or off-grid, backup systems, rooftop or ground mounting.



But if you want to install a DIY solar panel in an easily accessible position, here are the steps to follow. 1. Find the right spot. Renology's off-grid kits start at just ?110 (normally ?170) for a single 100W panel without a battery, but we couldn't resist recommending this premium panel. It can provide all the electricity you need



Suppose, in our case the load is 3000 Wh/per day. To know the needed total W Peak of a solar panel capacity, we use PFG factor i.e. Total W Peak of PV panel capacity = $3000 / 3.2$ (PFG) = 931 W Peak. Now, the required number of PV panels are = $931 / 160W = 5.8$. This way, we need

110 PHOTOVOLTAIC PANELS INSTALLED

6 numbers of solar panels each rated for 160W.

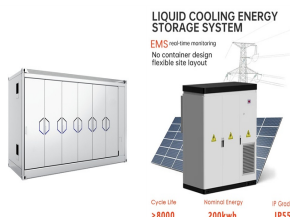
110 PHOTOVOLTAIC PANELS INSTALLED



The components of a solar panel system are pretty simple. But different product options and brands can sometimes make the equipment selection process feel complex and confusing. The term "racking" refers to a rooftop installation. There is also mounting equipment that is ideal for ground mount solar and solar carports, which can both serve



A 4kW solar panel system is suitable for the average home in the UK and costs around £5,000 ??? £6,000.; The estimated average yearly savings you can expect with a solar panel system range from £440 to £1,005.; If you install a 4kW ???



DIY Solar Panel Installation is a great way to produce renewable energy and lower your energy bills. Read our guide on how to install solar panels yourself. Skip to content. 8.00am - 4.00pm; 01903 213141; Home; About; Contact; News/Blog; FAQ. 12v solar panel kit instructions;