

12 VOLTS LITHIUM BATTERY ESTONIA



An expert, independent study of the Best 200Ah Lithium Battery UK. What we liked and didn't like about the top models (12V, LiFePO4 only). An expert, independent study of the Best 200Ah Lithium Battery UK. What we liked and didn't like about the top models (12V, LiFePO4 only). Nominal Voltage: 12.8V; Charging Temperature: 0??? to +55???



Shop 12V LiFePO4 Battery Packs at Big Battery Canada. We are Manufacturer & Supplier of 12V Batteries with LFP Modules, Wide Temperature Operating Range & Other Safety Features. Voltage: 12V Input Voltage: 85- 264V AcDC Cable Length: 1 Foot Length Weight: 5 (LBS) Length: 9 (in) Width: 6 (in) Height: 3.5 (in) 138Ah | 1.76kWh | Lithium Battery



12 Volt lithium batteries. Shop deep cycle batteries, 12v LiFePO4 batteries, automotive batteries, motorcycle, powersport, RV, marine, & boat batteries. Dakota Lithium 12v 23Ah Battery with Dual USB Ports & Voltmeter \$ 229 \$ 199 (141 reviews) Dakota Lithium 12v 20Ah Battery \$ 199 \$ 179 (233 reviews) Dakota Lithium+ 12v 25Ah 300cca Battery \$ 289



12 Volt Direct 100Ah 12.8V Slimline Lithium LiFePO4 Deep Cycle Battery. Skip to main content. About Us ; Contact Us ; Shipping ; Returns ; Find a Dealer ; 30 Day Returns | Free shipping on orders over \$49 Introducing 12 Volt Direct's ???

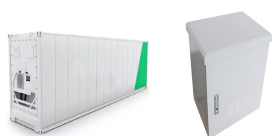


A 12 volt lithium battery is a type of rechargeable battery that operates at a voltage of 12 volts. It is commonly used in various applications, including automotive, marine, RVs, solar power systems, and portable electronics. In this article, we will explore the different aspects of a 12 volt lithium battery, including its features, advantages

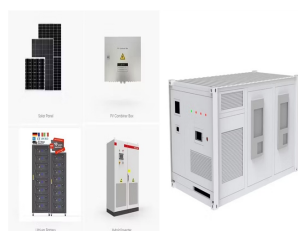
12 VOLTS LITHIUM BATTERY ESTONIA



Charging voltage: 12.6V green light - when fully charged or not connected.
r. 12.6V 3S Lithium Battery Charger - for 11.1V Li-ion/LiPo battery pack;
UK, EU plug It has: constant voltage, constant current, over voltage, over
current protection function; indicator light conversion; automatic recovery.
Estonia (EUR ???) Faroe Islands (GBP



This high capacity, 200Ah Lithium SuperPack battery from power
management specialists, Victron Energy, is easy to use with its built-in
BMS (Battery Management System) and multiple safety features. Lithium
Iron Phosphate (LiFePO4) technology offers huge benefits over traditional
lead-acid technology and is fast becoming the new standard for leisure,
marine and other deep ???



Shop for 12 Volt Lithium Batteries in Lithium Batteries. Buy products such
as 12V 100Ah LiFePO4 Battery Bluetooth, SCREMOWER 15000 Deep
Cycles Lithium Replacement Batteries 100A BMS for Campers RV Solar
Golf Carts Trolling ???



The 12 volt 100Ah lithium battery has become a go-to choice for those
seeking reliable power solutions for RVs, solar systems, and more. As
battery technology evolves, understanding these batteries can help you
make more informed decisions. Whether you're a professional looking for
efficient energy storage or a weekend adventurer outfitting your ???



Do I need a BMS? Having a Battery Management System (BMS) is
extremely important with Lithium batteries. These systems will disconnect
the charging/discharging sources from the battery in the event of a
dangerous ???

12 VOLTS LITHIUM BATTERY ESTONIA



12V Lithium Battery Voltage Chart . Generally, battery voltage charts represent the relationship between two crucial factors ??? a battery's SoC (state of charge) and the voltage at which the battery runs. The below table illustrates the 12V lithium-ion battery voltage chart (also known as 12 volt battery voltage chart).



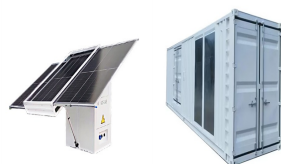
Topband Li Ion 12 volt batterier med bluetooth overv?gning finder du her p? siden med hurtig levering. Har du brug for et batteri der kan erstatte blybatteriet i din elscooter, golfvogn eller har du brug for et batteri med et stort antal cycles kan du med fordel anvende Li Ion batterierne fra Topband. Master Battery Lithium batteri 48volt



Eesti Energi has completed the procurement for its 26.5MW/51MWh BESS, the first of that scale in Estonia, with LG Energy Solution among the successful parties. The battery energy storage system (BESS) will ???



12V Lithium Battery Voltage Chart. Typically, a battery voltage chart represents the relationship between two key factors - the battery's SoC (state of charge) and the battery's operating voltage. The following table illustrates a 12V lithium-ion battery voltage chart (also known as a 12-volt battery voltage chart).



Rated at 10 Amp Hours this 12 Volt lithium battery packs a big punch. Built for extreme conditions, this is Dakota Lithium's most versatile battery with the perfect amount of juice for electronics like fish finders, flashers, solar lighting, power wheels, and scooters. Engineered with Lithium Iron Phosphate (LiFePO4) technology this battery has



This LiFePO4 battery comes with: Fast-charging lithium battery charger, 1-Year Warranty Free Delivery within UK * ABOUT THE PRODUCT: Ultra-light, high-performance battery that is 7% lighter and lasts 10X longer than a standard battery. It comes with a lithium battery charger that

12 VOLTS LITHIUM BATTERY ESTONIA

fully charges the lithium battery in 2 hours from flat.

12 VOLTS LITHIUM BATTERY ESTONIA



12V 20Ah lithium battery for deep cycle applications such as electric wheelchair and mobility scooter. LiFePO4 free shipping in Canada often used in RVs to power 12-volt DC systems and charge batteries. Compatible with LiFePO4 batteries, sealed lead-acid batteries, and lead-carbon batteries. The built-in voltage regulator lets you set the



Unlock the secrets of 12-volt batteries with our comprehensive guide. Learn how to choose, use, and maintain the perfect 12-volt battery for your boat, camper, or off-grid system. Discover essential insights on types, capacity, charging, and maintenance to enhance your adventure's power reliability.



Will Prowse "Best Value" 12V LiFePO4 Battery for 2023 GOLD SPONSOR FOR 2023 LL BRAWL, 2024 MLF 12V marine battery, best lithium battery for 30~70 lb trolling motors, also suitable for RVs, solar systems, and home energy storage Low-temperature charging cutoff protection, preventing charging below



For example, a fully charged 12-volt lead-acid battery will have a voltage of around 12.8 volts, while a partially discharged battery may have a voltage of 12.2 volts or less. To get an accurate reading of a battery's state of charge, you need to use a battery tester or multimeter that takes into account the battery's type and voltage characteristics.



A 12V lithium battery is a type of rechargeable battery that utilizes lithium-ion chemistry to store and release energy. It's designed to provide a nominal voltage of 12 volts, making it compatible with many devices and systems that traditionally rely on lead-acid batteries.



3 ? For voltage monitoring, a fully charged 12-volt lithium battery will read between 13.6 and 14.6 volts. Investing in a smart charger or a charge controller with built-in protections can automate this process and help you avoid overcharging without constant supervision.

12 VOLTS LITHIUM BATTERY ESTONIA



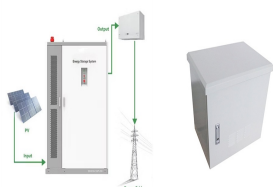
12 Volt Battery Chargers. All Categories. Accessories; Automotive & Powersports; Batteries by Voltage; Battery Chargers; Chargers; Clothing; Golf Cart & Electric Vehicle Marine 4 Bank, 40-Amp (10-Amp Per Bank) 12V Onboard Lithium Battery Charger \$ 329 \$ 299. Ultra Fast 12V 50A Waterproof Dakota Lithium LiFePO4 Onboard Battery Charger \$ 399



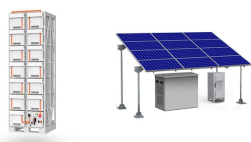
Renogy 12V 100Ah LiFePO4 Deep Cycle Rechargeable Lithium Battery, Over 4000 Life Cycles, Built-in BMS, Backup Power Perfect for RV, Camper, Van, Marine, Off-Grid Home Energy Storage, Maintenance-Free Renogy Deep Cycle AGM 12 Volt 100Ah Battery, 3% Self-Discharge Rate, 1100A Max Discharge Current, Safe Charge Appliances for RV, Camping



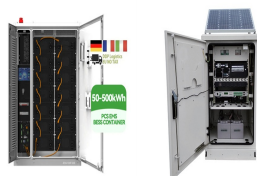
We manufacture our 12V lithium products based on UL standards, ensuring the reliability and safety of every 12V lithium battery. Canbat 12V lithium batteries come with a built-in battery management system (BMS), which protects against low temperature, high temperature, over-discharge, over-recharge and internal short-circuits.



12 Volt Direct Pro Series Battery Chargers are an IP22 Smart Battery Charger designed for use with most common battery types including AGM, Lead Acid, GEL and Lithium LiFePo4 batteries. Pro series chargers are ideal for use in workshops, motor vehicles, cars, bikes, boats, camper trailers and caravans.



What is the ideal voltage for a lithium-ion battery? The ideal voltage for a lithium-ion battery depends on its state of charge and specific chemistry. For a typical lithium-ion cell, the ideal voltage when fully charged is about 4.2V. During use, the ideal operating voltage is usually between 3.6V and 3.7V. What voltage is 50% for a lithium



ECO-WORTHY Portable 12V Lithium Battery, 20Ah LiFePO4 Deep Cycle Rechargeable Battery, Built-in BMS, 4000+ Cycles, Perfect for Outdoor Camping Fishing RV Marine Trolling Motor Fishfinder. ML22-12 - 12 Volt 22AH SLA Battery - Mighty Max Battery Brand Product.