

# 15KW WIND TURBINE FOR HOME SYRIA



Can a 15 kW wind turbine power an electric car? In 2019, we introduced a new 15 kW turbine with advanced features and an energy production capacity over double that of our 10 kW. If you have at least a moderately good wind resource, the new Excel 15 can provide all the energy needed for a total electric home (and allowing you to replace fuel oil or propane heating) and an electric car.



What is a 15kW wind turbine? The wind turbine 15kW is a production of Mischtechnik Hoffmann & Partner GmbH, a manufacturer from Austria. This manufacturer has been in business since 2009. The rated power of Ecovent 15kW is 15,00 kW. At a wind speed of 2,5 m/s, the wind turbine starts its work. the cut-out wind speed is 25,0 m/s. The rotor diameter of the Ecovent 15kW is 8,4 m.



What type of generator does a ow-15kwh wind turbine use? The OW-15kWH wind turbine uses a direct-drive permanent magnet synchronous generator with a generator starting torque of 7-10Nm and can be started at a wind speed of 2.5m /s. The maximum output power of the fan can reach 18kW, and the generator complies with IEC 60034-1 Medium S1 continuous working system requirements.



What are the models of ecovent 15kW wind turbine? There are no modelsto this Windturbine. The wind turbine 15kW is a production of Mischtechnik Hoffmann & Partner GmbH, a manufacturer from Austria. This manufacturer has been in business since 2009. The rated power of Ecovent 15kW is 15,00 kW. At a wind speed of 2,5 m/s, the wind turbine starts its work. the cut-out wind speed is 25,0 m/s.



What is the maximum speed of a 15kW wind turbine? The maximum speed of the generator is 1.450,0 U/min. At the mains frequency, the 15kW is at 50,0 Hz. In the construction of the tower, the manufacturer uses Rohrmast. We have 2 pictures of this wind turbine.

# 15KW WIND TURBINE FOR HOME SYRIA



How many rotor blades does a 15kW wind turbine have? The wind turbine is equipped with 3 rotor blades. The maximum rotor speed is 90,0 U/min. The Ecovent 15kW is fitted with a Spur gearbox. The gearbox has 2 stages. In the generator, Mischtechnik Hoffmann & Partner GmbH sets to Asynchron. The manufacturer has used one generator for the 15kW. The maximum speed of the generator is 1.450,0 U/min.



15kw Wind Turbine Kit Price, Power generation, Detail, you can get every detail here. And you can put on solar panels in the system as well. FAQ- 15kw home wind turbine What is the estimated power production? 15kw wind turbine ???



All Kingspan small wind turbines are able to operate in any wind speeds, even storm-force conditions, without needing to stop. As wind velocity increases, the blades pitch and cone to ???



If sited properly, domestic wind turbines of 1 - 6 kW capacity contribute to the energy needs of a building. Overall in the UK wind power is cheap & plentiful . MENU; Home; Green Products; Building Design; ??? For windspeeds used to ???



15kw wind turbine on grid working system including: wind turbine main body (blades rotor, permanent magnet generator, rotor body, tail rod, tail vane), stand alone tower or lattice tower, PWM on grid controller with dump ???

# 15KW WIND TURBINE FOR HOME SYRIA



A 1.5 kW turbine would cost approximately \$7,000 and deliver around 2,600 kWh over a year depending on your location and wind speeds. A larger array that has a 15 kW capability would cost in the region of \$70,000 ???



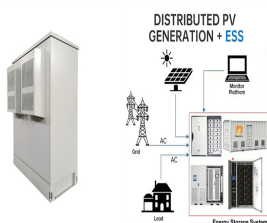
When selecting a vertical wind turbine for home use, several key factors should guide the decision-making process. Space and Location. The available space and optimal location for installation are important ???



Ropatec SA70proS 15kW Wind Turbine turbine has been designed to maximize performance while maintaining low installation and maintenance costs. The turbine is suitable for both on-grid and off-grid solutions as well as the ???



In 2019, we introduced a new 15 kW turbine with advanced features and an energy production capacity over double that of our 10 kW. If you have at least a moderately good wind resource, the new Excel 15 can provide all the energy ???



Permanent magnet generator of 40 poles, 20 kW maximum power at 120 rpm and 1,700 Nm provides a high level of energy performance. Our 10kW wind turbine is used in both on-grid and off-grid applications, powering critical infrastructure ???

**Commercial and Industrial ESS**  
Air Cooling / Liquid Cooling



The OW-15kWh wind turbine uses a direct-drive permanent magnet synchronous generator with a generator starting torque of 7-10Nm and can be started at a wind speed of 2.5m / s. The maximum output power of the fan can reach 18kW, and ???

# 15KW WIND TURBINE FOR HOME SYRIA

---



The Dynamics of 15 kW Wind Generators: Understanding the inner workings of a 15 kW wind generator is essential to grasp its significance in the renewable energy sector. These generators, capable of converting wind energy into ???