

# 2000 WATTS OF SOLAR PANELS TO GENERATE ELECTRICITY



The solar generator I am going to show you how to build will cost half the price, include a 2,000 watt / 4,000 watt peak AC inverter, a 100W solar panel, a high quality true deep cycle AGM battery. I also will add extras, such as integrated LED flood lamps, a high current port for attaching jumper cables, and some others.



Use our solar panel calculator to find your solar power needs and what panel size would meet them.  $\text{solar array output} = \text{electricity consumption} / (365 \times \text{solar hours in a day})$  required panels = solar array size in kW x 1000 / panel output in watts. Typically, the output is 300 watts, but this may vary, so make sure to double-check!



Solar panels generate between 0.17 and 1.4 kilowatts of electricity per hour, with the average panel producing between 250 and 400 watts per hour. How Do Solar Panels Work? Solar panels work by absorbing sunlight with photovoltaic cells, generating direct current (DC) energy and then converting it to usable alternating current (AC) energy.



Solar panels need sunlight to generate electricity. If you live somewhere with lots of sunshine, you can install fewer solar panels to cover your electricity bills. For example, one 400-watt solar panel in Arizona can produce almost 90 kWh of electricity in one month. That same ???



A 2000-watt solar generator is a portable power system capable of delivering a continuous power output of up to 2000 watts for an extended duration. This energy is utilized to operate various electrical devices such as ???

# 2000 WATTS OF SOLAR PANELS TO GENERATE ELECTRICITY



The amount of electricity your solar panels produce depends on many factors, including the direction and angle of your roof. The most important one is how sunny it is where you live ??? for example, a 2 kW system ???



Adequate solar panel planning always starts with solar calculations. Solar power calculators can be quite confusing. That's why we simplified them and created an all-in-one solar panel calculator. Using this solar size kWh calculator, together with savings and payback calculator, will give you an idea of how to transition to a solar panel-based system for your house.



A 2000-watts can be achieved by using seven solar panels of 300 watts to get 2100 watts, which is slightly above the 2000 watts needed, or using ten solar panels of 200 watts to give 2000 watts that are required. Alternatively, solar panels of lower watts can be used to produce the 2000 watts needed.



What Is a 2000 Watt Solar Generator A 2000-watt solar generator refers to a power unit that has the capacity to deliver up to 2000 watts of electrical power. The "2000 watt" specification indicates the generator's power output capability, which means that the generator can provide a sustained output of 2000 watts of electricity.



From the above, we gather that a household with 1-2 people typically uses around 1800 kWh of electricity each year, which means they'd need about 6 solar panels to generate around 1590 ???

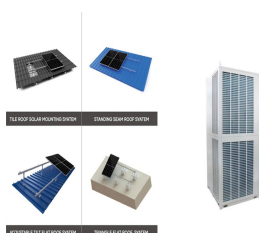
# 2000 WATTS OF SOLAR PANELS TO GENERATE ELECTRICITY



Highlights. Huge expandable capacity - expandable 2,016 Wh capacity battery power station, link 2-extra batteries to get a massive 6,048 Wh; More than a solar generator, charge with AC, solar, car or the EcoFlow smart generator, charge to full in 1.8-hours via wall outlets, use dual charging to combine AC with the smart generator for industry leading speeds, pair solar plus AC or ???



Today's premium monocrystalline solar panels typically cost between \$1 and \$1.50 per Watt, putting the price of a single 400-watt solar panel between \$400 and \$600, depending on how you buy it. Less efficient polycrystalline panels are typically cheaper at \$0.75 per watt, putting the price of a 400-watt panel at \$300.



With a capacity of 2042Wh and a power output of 6000 peak watts/3000 running watts, the Solar Generator 2000 Plus is the best home backup generator in emergency situations. The Explorer 2000 Plus supports up to 5 extra battery packs to expand its capacity from 2kWh to 12kWh, and 2 Explorer 2000 Plus can be parallelly connected to double the capacity to 24kWh, voltage to ???



The weather, panel design and other reasons make it difficult for solar panels to generate peak output consistently. To be on the safe side, add 10% or more to the solar panel size. If your inverter load needs 2000 watts, get a 2100-2200W solar system.



A 2000W solar generator can power most household appliances including the refrigerator, TV, and coffee maker as well as smaller electronics like lights, fans and devices.. If it has a large battery capacity (5+kWh), it can run higher-wattage appliances like a ???

# 2000 WATTS OF SOLAR PANELS TO GENERATE ELECTRICITY



The wattage of solar panels and the desired system capacity are crucial factors in determining the number of panels needed. Solar panels come in different wattages, ranging from 250 to 400 watts. Higher-wattage panels can generate more electricity but may also be more expensive.



Most home solar panels that installers offer in 2024 produce between 350 and 450 watts of power, based on thousands of quotes from the EnergySage Marketplace. Each of these panels can produce enough power to run appliances like your TV, microwave, and lights. To power an entire home, most solar panel owners need 17 to 30 solar panels.. The amount of ???



How many solar panels do I need for 2000 kWh per month? As a rule of thumb, a system that could produce 2000 kWh per month, would be rated at around 14 kW (kilo-Watts) of power. A system of this size would roughly consist of about 44 residential solar panels that are each rated at 330 Watts (0.33 kW). However, it is important to note the following:



Apart from size, various types of solar panels are characterized by energy output in Watts (W). Solar cells' efficiency in converting sunlight into electricity depends on these wattage ratings. The most well-known type is 400 W solar panels, which produce an ???



How many solar panels To Run 1500 watt heater? To run a 1500 watt for an hour you'd need a 1650Wh of DC power (an extra 10% to cover the DC to AC conversion loss) On average a solar panel produces about 80% of its rated power output in one peak sun hour. This percentage is based on my 200-watt solar panel's 30 days of output data.

# 2000 WATTS OF SOLAR PANELS TO GENERATE ELECTRICITY



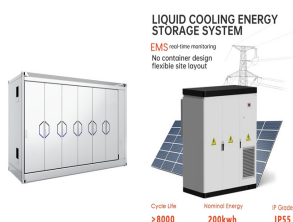
How much power or energy does solar panel produce will depend on the number of peak sun hours your location receives, and the size of a solar panel. just to give you an idea, one 250-watt solar panel will produce about ???



400-watt solar panels that are 20 square feet in size: 2,000: 100: 52,000 kWh \*Assumptions: 20-square-foot/400-watt solar panels, 1.3 production ratio. More panels equals more energy production, so a larger ???



For example with a 20% buffer, the required solar panel output with Buffer (Watts) =  $6 \text{ kW} \times 1.20 = 7.2 \text{ kW}$ . Nevertheless, when you are choosing solar panels make sure their power ratings equal or surpass the required output to ???



Overall, the article aims to educate readers about 1000 watt solar panel systems and guide them in building or buying a suitable setup. Introduction 1000 Watt Solar Panel Systems: EVERYTHING You NEED to Know. 1000 watt solar panel system is one of the most popular sizes for solar panel arrays.



Space-Saving Starter Set: 2kw Diy Solar Kit with Microinverters. This 2000W microinverter kit serves as a great entry-level option. The five 400W modules produce enough energy ??? 175 to 375 kilowatt (kW) ??? to offset small and medium size loads such as lighting, television and kitchen appliances while taking up little roof space.

# 2000 WATTS OF SOLAR PANELS TO GENERATE ELECTRICITY



P3 P4400 Kill A Watt Electricity Usage Monitor Check Price. (watt-hours) that the solar panels should be capable of producing daily. If left blank, the calculator will use the daily energy consumption calculated in the previous step. Energizer 2000 Watt Pure Sine Wave Power Inverter 12V DC to 110V/120V Converter for Family RV Off Grid



Wh Capacity & 2000W Output - Power a wider array of high-power appliances and devices. Wall Charge in 2 Hours - Wall charge from 0%-80% in 1 hour; charge from 0-100% in 2 hours. Solar Charge in 2.5 Hours - Support up to 800W solar input for outdoor charging. 12 Diverse Outlets - Up to 12 output ports to power all of your devices simultaneously.



A 2000-watt generator, also known as a running-watt generator, is a great tool for providing temporary power in times when the electricity is out. However, it's important to remember that this type of generator is not meant to power all ???



-watt solar panels have a nominal voltage of 24 Volts instead of 12 Volts, these solar panels produce around 5 Amps of current. For example, this 200W solar panel from Rich Solar has an  $I_{mp}$  of 5.32 Amps. ???



What this tells us is that we need 50 300W solar panels to generate 2,000 kWh of electricity per month. Of course, you might not choose 300W solar panels. That means that we would need 59 300W solar panels to produce 2,000 kWh per ???



# 2000 WATTS OF SOLAR PANELS TO GENERATE ELECTRICITY

---



Starting Watts and Running Watts of a 2,000-Watt Generator. When it comes to household applications, electricity is measured in watts. A generator rated at 2000W indicates it can run appliances that require 2000W of continuous power or ???



How many solar panels do I need for 2000 kWh per month? How many panels will you need for a 2kW (2000 Watt) solar system? Typically, you would need between 5 and 10 solar panels for a 2kW solar system. The number of solar panels required for a 2000 Watt system would depend on the power rating of the solar panels you're planning on using.