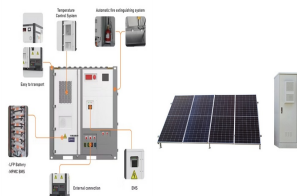


# 200KW FLYWHEEL ENERGY STORAGE DEVICE



Thanks to the unique advantages such as long life cycles, high power density and quality, and minimal environmental impact, the flywheel/kinetic energy storage system (FESS) is gaining steam recently.



An overview of system components for a flywheel energy storage system. Fig. 2. A typical flywheel energy storage system [11], which includes a flywheel/rotor, an electric machine, bearings, and power electronics. Fig. 3. The Beacon Power Flywheel [12], which includes a composite rotor and an electric machine, is designed for frequency



Besides, it can be stored in electric and magnetic fields resulting in many types of storing devices such as superconducting magnetic energy storage (SMES), flow batteries, supercapacitors, compressed air energy storage (CAES), flywheel energy storage (FES), and pumped hydro storage (PHS) 96 % of the global amplitude of energy storage capacity



One energy storage technology now arousing great interest is the flywheel energy storage systems (FESS), since this technology can offer many advantages as an energy storage solution over the



The operation of the electricity network has grown more complex due to the increased adoption of renewable energy resources, such as wind and solar power. Using energy storage technology can improve the stability and quality of the power grid. One such technology is flywheel energy storage systems (FESSs). Compared with other energy storage systems, ???

# 200KW FLYWHEEL ENERGY STORAGE DEVICE



Energy storage systems (ESSs) are the technologies that have driven our society to an extent where the management of the electrical network is easily feasible. The balance in supply ???



Beacon Power started testing their Smart Energy 25 (Gen 4) flywheel energy storage device at a wind farm in Tehachapi, California, in 2010. The system was built for the California Energy Commission as part of a wind power/flywheel demonstration project. A flywheel is used to regulate inertia in wind turbine rotors (Reference: wiely )



The core element of a flywheel consists of a rotating mass, typically axisymmetric, which stores rotary kinetic energy  $E$  according to (Equation 1)  $E = \frac{1}{2} I \omega^2$  [J], where  $E$  is the stored kinetic energy,  $I$  is the flywheel moment of inertia [kgm<sup>2</sup>], and  $\omega$  is the angular speed [rad/s]. In order to facilitate storage and extraction of electrical energy, the rotor ???



This paper presents a novel utility-scale flywheel ESS that features a shaftless, hubless flywheel. The unique shaftless design gives it the potential of doubled energy density and a compact ???



o Energy storage technologies with the most potential to provide significant benefits with additional R& D and demonstration include: Liquid Air: ??? This technology utilizes proven technology, ??? Has the ability to integrate with thermal plants through the use of steam-driven compressors and heat integration, and

# 200KW FLYWHEEL ENERGY STORAGE DEVICE



Flywheel Energy Storage (FES) systems refer to the contemporary rotor-flywheels that are being used across many industries to store mechanical or electrical energy. Instead of using large iron wheels and ball bearings, advanced FES systems have rotors made of specialised high-strength materials suspended over frictionless magnetic bearings



Considering the aspects discussed in Sect. 2.2.1, it becomes clear that the maximum energy content of a flywheel energy storage device is defined by the permissible rotor speed. This speed in turn is limited by design factors and material properties. If conventional roller bearings are used, these often limit the speed, as do the heat losses of the electrical machine, ???



Energy storage flywheel systems are mechanical devices that typically utilize an electrical machine (motor/generator unit) to convert electrical energy in mechanical energy and vice versa.



The hybrid energy storage system consists of 1 MW FESS and 4 MW Lithium BESS. With flywheel energy storage and battery energy storage hybrid energy storage, In the area where the grid frequency is frequently disturbed, the flywheel energy storage device is frequently operated during the wind farm power output disturbing frequently.



The literature written in Chinese mainly and in English with a small amount is reviewed to obtain the overall status of flywheel energy storage technologies in China. The theoretical exploration of flywheel energy storage (FES) started in the 1980s in China. The experimental FES system and its components, such as the flywheel, motor/generator, bearing, ???

# 200KW FLYWHEEL ENERGY STORAGE DEVICE



Combining energy sources like solar and wind with flywheel energy storage devices like a flywheel is one way to create a renewable energy system that is load balanced. Given the energy storage flywheel described in the table, answer the following questions. What is the mass of the flywheel? What is the top angular speed of the flywheel?



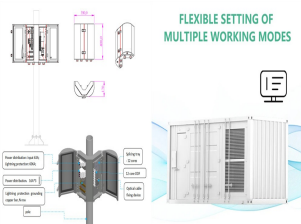
This study presents the recent application of energy storage devices in electrified railways, especially batteries, flywheels, electric double layer capacitors and hybrid energy storage devices. 3 x 200 kW flywheel units were installed on the Lyon metro for regulating the third rail voltage between 850 and 860 V during train braking



A flywheel is a very simple device, storing energy in rotational momentum which can be operated as an electrical storage by incorporating a direct drive motor-generator (M/G) as shown in Figure 1. The electrical power to and from the M/G is transferred to the grid via inverter power electronics in a similar way to a battery or any other non



A review of energy storage types, applications and recent developments. S. Koohi-Fayegh, M.A. Rosen, in Journal of Energy Storage, 2020 2.4 Flywheel energy storage. Flywheel energy storage, also known as kinetic energy storage, is a form of mechanical energy storage that is a suitable to achieve the smooth operation of machines and to provide high power and energy ???



REVIEW OF FLYWHEEL ENERGY STORAGE SYSTEM Zhou Long, Qi Zhiping Institute of Electrical Engineering, CAS Qian yan Department, P.O. box 2703 Beijing 100080, China zhoulong@mail.iee.ac.cn, qzp@mail.iee.ac.cn ABSTRACT As a clean energy storage method with high energy density, flywheel energy storage (FES) rekindles wide range

# 200KW FLYWHEEL ENERGY STORAGE DEVICE



Video Credit: NAVAJO Company on The Pros and Cons of Flywheel Energy Storage. Flywheels are an excellent mechanism of energy storage for a range of reasons, starting with their high efficiency level of 90% and estimated long lifespan. Flywheels can be expected to last upwards of 20 years and cycle more than 20,000 times, which is high in ???



Dai Xingjian et al. [100] designed a variable cross-section alloy steel energy storage flywheel with rated speed of 2700 r/min and energy storage of 60 MJ to meet the technical requirements for energy and power of the energy storage unit in the hybrid power system of oil rig, and proposed a new scheme of keyless connection with the motor



The flywheel storage technology is best suited for applications where the discharge times are between 10 s to two minutes. With the obvious discharge limitations of other electrochemical storage technologies, such as traditional capacitors (and even supercapacitors) and batteries, the former providing solely high power density and discharge times around 1 s ???



This study presents the recent application of energy storage devices in electrified railways, especially batteries, flywheels, electric double layer capacitors and hybrid energy storage devices. 3 x 200 kW flywheel units ???



Flywheel Energy Storage Systems (FESS) work by storing energy in the form of kinetic energy within a rotating mass, known as a flywheel. Here's the working principle explained in simple way, Energy Storage: The system features a flywheel made from a carbon fiber composite, which is both durable and capable of storing a lot of energy.

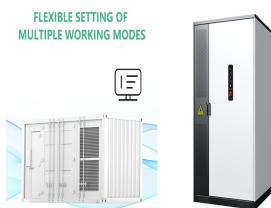
# 200KW FLYWHEEL ENERGY STORAGE DEVICE



Flywheel is one of the oldest storage energy devices and it has several benefits. Flywheel Energy Storage System (FESS) can be applied from very small micro-satellites to huge power networks. A comprehensive review of FESS for hybrid vehicle, railway, wind power system, hybrid power generation system, power network, marine, space and other



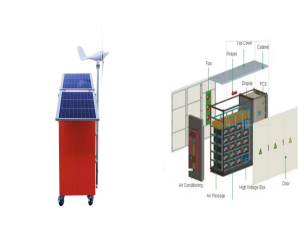
Flywheel energy storage (FES) is a technology that stores kinetic energy through rotational motion. The stored energy can be used to generate electricity when needed. Flywheels have been used for centuries, but modern FES systems use advanced materials and design techniques to achieve higher efficiency, longer life, and lower maintenance costs



Electrical energy is generated by rotating the flywheel around its own shaft, to which the motor-generator is connected. The design arrangements of such systems depend mainly on the shape and type



How the Flywheel Works. The flywheel energy storage system works like a dynamic battery that stores energy by spinning a mass around an axis. Electrical input spins the flywheel hub up to a high speed and a standby charge keeps the unit spinning until its called upon to release . its energy. The energy is proportional to its mass and speed squared.



A flywheel is an inertial energy storage device. It absorbs mechanical energy and serves as a reservoir, storing energy during the period when the supply of energy is more than the requirement and releases it during the period when required and releases it during the period when the requirement of energy is more than the supply.