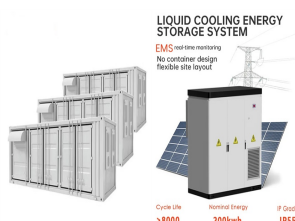


290W PHOTOVOLTAIC PANEL SPECIFICATIONS



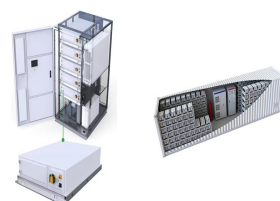
Product warranty: 20 years ??? covers panel defects Performance warranty: 25 years ??? with 0.5% warranted annual degradation, REC TwinPeak 5 will still produce at least 86% of its nameplate power in its 25th year of operation Eligible for REC ProTrust*, a comprehensive package that offers a 25-year warranty for each of product, performance, and labor: get an additional five ???



See specifications, prices, warranty info and reviews for the SW 290 MONO BLACK, a 290 Monocrystalline cells solar panel from SolarWorld Americas Inc. ----Out of Biz 2018. Best online prices for SolarWorld Americas Inc. ----Out of Biz 2018 solar panel. Sort by: LG Solar. i. Model # LG335N1K-V5. 4.79 930 Reviews. Best



Spec sheet/data sheet for the Hyundai HiS-S290MI (290W) solar panel. Features; Pricing; Login; Hyundai HiS-S290MI (290W) Solar Panel. Generate a Solar Permit Package for a design using Hyundai HiS-S290MI (290W) Sign up Learn More. With SolarDesignTool, you can create a design from scratch and generate a full PV permit package in as little as 15



Spec sheet/data sheet for the REC Solar REC290WP (290W) solar panel. Features; Pricing; Login; REC Solar REC290WP (290W) Solar Panel. Generate a Solar Permit Package for a design using REC Solar REC290WP (290W) Sign up Learn More. With SolarDesignTool, you can create a design from scratch and generate a full PV permit package in as little as 15



290 Watt Solar Panel . Download full specs . Download fact sheet . Other power outputs available: 360 Watt; 330 Watt; 300 Watt; 295 Watt; 290 Watt; 100 Watt; 75 Watt; 35 Watt; x Request pricing for 290W solar panels. No. of panels you need: My project is at this stage: Comments. Name. City/Town. Contact No. (optional) Email. Location: My

290W PHOTOVOLTAIC PANEL SPECIFICATIONS



LONGi Solar Panel LR6 lineup is an efficient monocrystalline 60-cell module, with excellent electrical and solid structural performance. Longi Solar panels can withstand 5400 Pa snow load and 2400 Pa wind load. These ???



Specifications included in this datasheet are subject to change without notice. DIMENSIONS OF PV MODULE TSM-DD05A.05 (II) (unit: mm)
ELECTRICAL DATA @ STC TSM-275 TSM-280 TSM-285 TSM-290
TSM-295 TSM-300 (Power ??? 290 W) Mechanical Load 5400 Pa Wind Load 2400 Pa



SolarWorld SunModule Plus 275 Watt, 20V Monocrystalline Solar Panel (SW275M) Rating Required. Name Email Required. Review Subject Required. Comments Required. SKU: SW275M UPC: MPN: Weight: 151.00 LBS. ???



Hyundai Heavy Industries HiS-S290RG(BLK) Solar Panel Warranty. Hyundai Solar Cells Made in Korea. 10-Year Product Warranty ? On materials and workmanship. 25-Year Performance Warranty ? Initial year: 97% ? Linear ???



REC TwinPeak 2 REC290TP2 Solar Panel Review TwinPeak 2 Technology. REC TwinPeak 2 Series solar modules use unique and innovative technologies, and a ground-breaking layout, to give you a high efficiency and high power output ???

290W PHOTOVOLTAIC PANEL

SPECIFICATIONS



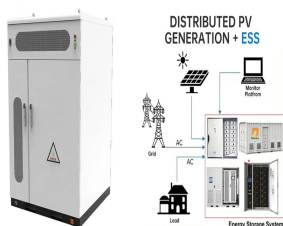
Spec sheet/data sheet for the LG LG290S1W-A5 (290W) solar panel.

Features; Pricing; Login; LG LG290S1W-A5 (290W) Solar Panel.

Generate a Solar Permit Package for a design using LG LG290S1W-A5 (290W) Sign up Learn More. With SolarDesignTool, you can create a design from scratch and generate a full PV permit package in as little as 15 minutes.



Specification Compare; Price per Watt \$0; Rated Power Output 290 W; Voltage (VOC) 38.8V; Number of cells 120; Cell Type Monocrystalline; All REC products All 290 Watt Panels . Attachments. Warranty Information.PDF. REC 290W Data Sheet.PDF. REC 290W Solar Panel 120 cell TWINPEAK 2 REC290TP2.



EcoDirect sells Hanwha Solar Panels at the lowest cost. Order Online or Call Us! 888-899-3509 Hanwha Solar 290 Watt Solar Panel. Silver frame, white backsheet. Model: HSL72P6-0-PA-290T Type: Poly: Dimensions: 77.4" x 39.4" x 1.97" Weight: 57.3 lbs: Frame: Silver: Connector: Amphenol H4: Electrical. Watts (STC) 290 W: Watts (PTC) Max



Spec sheet/data sheet for the Solartec S72MC6-290 (290W) solar panel.

Features; Pricing; Login; Solartec S72MC6-290 (290W) Solar Panel.

Generate a Solar Permit Package for a design using Solartec S72MC6-290 (290W) Sign up Learn More. With SolarDesignTool, you can create a design from scratch and generate a full PV permit package in as little as



This page contains information about the Canadian Solar CS6X-290M (290W) solar panel. To compare this to other PV modules, click here. DC Electrical Characteristics. STC Power Rating 290W ; PTC Power Rating 264.2W 1; STC Power per unit of area 14.0W/ft² (151.1W/m²) Peak Efficiency 15.11% ;

290W PHOTOVOLTAIC PANEL

SPECIFICATIONS



Hyundai HiS-S290RG > 290 Watt Mono Solar Panel - Black Frame. In observance of the Thanksgiving holiday, EcoDirect will be closed Thursday, November 28th & Friday, November 29th, 2024. 290 W Max Power Voltage (VMPP) 32.0 V Max Power Current (IMPP) 9.1 A Open Circuit Voltage (VOC) 38.8 V Short Circuit Current (ISC) 9.7 A Max System Voltage



w flexi Mono High Density solar panel with top exit junction box uses the latest solar cell technology to create super efficient power generation. Technical Specification . Power Size Weight (kg) Watts per day (W) Amp hours per day (A) Charge Controller Vmp (VDC) Imp (A) Voc(V) Isc(A) 110W: 1080 x 540 x 2mm: 2.01: 660: 36.72: 10A:



The Aurora PV module series offers a range of power outputs, from 325W to 670W, and boasts efficiency ratings between 19.88% and 21.6%. This series is segmented into three distinct family categories: mono-facial, bifacial with a glass-transparent back sheet, and ???



With SolarDesignTool, you can create a design from scratch and generate a full PV permit package in as little as 15 minutes. This page contains information about the Suntech STP290-24/Vd (290W) solar panel.



Spec sheet/data sheet for the Upsolar UP-M290M-B (290W) solar panel. Features; Pricing; Login; Upsolar UP-M290M-B (290W) Solar Panel. Generate a Solar Permit Package for a design using Upsolar UP-M290M-B (290W) Sign up Learn More. With SolarDesignTool, you can create a design from scratch and generate a full PV permit package in as little as 15

290W PHOTOVOLTAIC PANEL SPECIFICATIONS



At a massive 290W the flagship panel in the MHD Flexi range is our biggest ever single panel producing a whopping 1740 Watts per day (Watts per day based on six hours of average daily peak sunshine hours). All panels in the MHD Flexi solar panel range come with an industry-leading 4-year panel warranty. Bend boosting properties



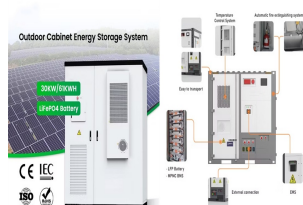
All LG photovoltaic modules can withstand a maximum load of 5400 Pa, are lightweight and are built with slim, durable glass. These panels are available in 260, 255, 250, 245 wattages. Certified laborator: LG has met the core standard specifications for solar modules and became the official test laboratory certified by TuV Reinland and Underwriters Laboratories.



PRODUCT SPECIFICATIONS Maximum Power 290 Wp Maximum Power Voltage 32.70 V Maximum Power Current 8.87 A Open Circuit Voltage 38.91 V Short Circuit Voltage 9.50 A 290W MONO SOLAR PANEL: Description. PRODUCT SPECIFICATIONS Maximum Power 290 Wp Maximum Power Voltage 32.70 V Maximum Power Current 8.87 A Open Circuit Voltage ???

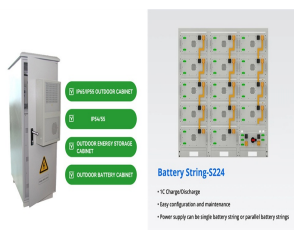


270 Watt Solar panels" range of prices, dimensions, sizes, voltage output, specifications datasheets. Ranges of information. Voltage: 18.4V ~ 69V Introducing the Poly SSP270-290 Watt solar panel by Sunergy USA [] View Product Download PDF. RH Solar 270 Watt . ???



SW 290 / 300 MONO PERFORMANCE UNDER STANDARD TEST CONDITIONS (STC)* SW 290 SW 300 Maximum power P max 290 Wp 300 Wp Open circuit voltage U oc 39.6 V 40.0 V Maximum power point voltage U mpp 31.9 V 32.6 V Short circuit current I sc 9.75 A 9.83 A Maximum power point current I mpp 9.20 A 9.31 A Module efficiency ?? m 17.30 % 17.89 % ???

290W PHOTOVOLTAIC PANEL SPECIFICATIONS



Wholesale Canadian Solar CS6K-290MS SuperPower 290W Solar Panel. The 290 watt CS6K-290MS features efficient Mono PERC solar cells to significantly improve power performance in morning, evening and other low light conditions. Efficient and reliable MONO PERC Monocrystalline solar cells;



TF-D-290W solar panel kits use PERC shingled-cells with a conversion efficiency of up to 22%, which is very suitable for rv life. The absorption will be enhanced and the damage to the cell will be reduced. TF-D-290W best flexible solar panel has excellent flexibility, with ETFE surface material, has excellent weather resistance, salt spray resistance, corrosion resistance and ???



The SolarWorld Sunmodule Plus SW 290 Mono is made in SolarWorld's high-tech facility in the USA. They carry out more tests on the Sunmodule Plus SW 290 Mono 290W monocrystalline module than required by international standards meeting at least 3 times IEC requirements. This ensures high reliability and the ability to offer a positive power tolerance on all Sunmodule Plus ???



MPPT stands for Maximum Power Point Tracker; these are far more advanced than PWM charge controllers and enable the solar panel to operate at its maximum power point, or more precisely, the optimum voltage and current for maximum power output. Using this clever technology, MPPT solar charge controllers can be up to 30% more efficient, depending on the ???