

400W PHOTOVOLTAIC PANEL

SPECIFICATIONS AND DIMENSIONS



Photovoltaic Technology Cable 4.0mm² (0.006 inches²), MC4 EVO2 / TS4* 120 cells White Module Dimensions Weight Glass Encapsulant material Backsheet Frame J-Box Cables Connector No. of cells 43°C (22°C) - 0.34%/°C - 0.25%/°C 0.04%/°C Temperature Coefficient of P_{MAX} Temperature Coefficient of V_{OC} Temperature Coefficient of I_{SC}



Solar panel size indicates the amount of energy that is produced by your system, while solar panel dimensions indicate the physical size of the solar panel. The average 350W solar panel has the dimensions of 190cm x ???



Solar Panels : 400 watt Solar Panels Information on the 400-watt solar panel, the devices it can power, and the number of batteries required to store power. Causes of a 400-watt solar panel to produce so low amps, the number ???



Panasonic's tradition of solar excellence continues with the EVERVOLT (R) Series 400- and 410-watt solar modules. Fueled by industry-leading conversion efficiency and a low .25% annual degradation rate, EVERVOLT (R) panels produce more clean power over the long haul. Superior module efficiency and greater high-temperature performance deliver a high-output renewable ???



W solar panel has different specifications. They are current: 10A to 12A, voltage: 35V to 40V, output: 400 watts, efficiency: 20% to 22%, Warranty: 25 years, etc. Physical Dimensions of the 400W Solar Panel. Length typically ranges from 1.7 to 2 meters. Width: approximately 1 meter.

400W PHOTOVOLTAIC PANEL

SPECIFICATIONS AND DIMENSIONS



How solar panel size and dimensions affects the system design. When it comes to designing a optimal solar system the solar panel size plays a key role: The height and width of each panel will determine how many solar ???



The exact size of a 400 watt solar panel depends on the manufacturer and the model. In general, 400 Watt solar panels have 144 half-cut solar cells with measurements similar to 72 cell solar panels. Of course, the number of cells in a module reflects on the 400W solar panel price. The dimensions of an average 400 Watt solar panel are about 79



In-depth review of the high efficiency SunPower 400W solar panel. Get the full specs, warranties, pricing details and real-world performance before installing. Compare Solar Products. Solar Products. Solar Panels Panel Dimensions : 1835X 1017 X 40mm: Weight: 46.7. lbs/ 21.2 kg: Number of Cells: 66 Maxeon GenV: Connector Type: Staubli MC4



The average size of a 400W solar panel is around 79??? X 39??? X 1.4???; while they are relatively large, they can still fit on most family-sized boats that range between 20 to 30 feet. 6 Of The Most Important Specifications For A 400W Solar Panel. Maximum Power (Pmax) at standard conditions (STC) MaxPowerPoint Voltage (Vmpp) MaxPowerPoint



A 400 W solar panel does what it sounds like ??? one panel produces an output of 400 watts of electricity, which yields approximately between 1.2 and 3 kilowatt hours (kWh) daily. How much electricity your panels actually generate on a day-to-day basis depends on a few key factors such as how much sunlight they get, your geographic location and the angle your ???

400W PHOTOVOLTAIC PANEL

SPECIFICATIONS AND DIMENSIONS



400 W is the most popular solar panel size today, with a ton of options to choose from. In this article, we list the best 400 W panels on the market. Top 7 Best 400-Watt Solar Panels in 2024 (Cost, Specs & More) In ???



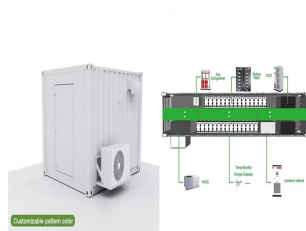
When contemplating the addition of solar panels to your roof, the dimensions and effectiveness of these panels are crucial aspects to keep in mind.. Solar panels come in the standard 1.70m x 1.0m dimensions with an output ranging between 250 ??? 440 watts.. While output varies, in most cases the size of the single solar panel will not change.



400W Portable Solar Panel 22.6% Conversion Rate | IP68. USD \$699 \$1,199 400W Solar Panel's shipment starts from mid Dec. Quantity. You may also like. EcoFlow Solar Extension Cable. USD \$29.99. Details. USD \$699 \$1,199



All you need to know about the VSUN 400 solar panel including rating, cost, efficiency, and warranty terms. Open navigation menu 400W. Materials Warranty Term. 12 years. Warranty. 25 years. Spec Sheet. Warranty Specifications expand Solar Panel Aesthetics . expand Physical Characteristics



Explore product features, technical specifications and warranty information for Trina Solar 400W panels. Trina Solar 400W panel The Trina Solar Vertex S monocrystalline module with high density interconnect technology is small in size but big on power ??? delivering an impressive power output of up to 400W with 20.8% module efficiency.

400W PHOTOVOLTAIC PANEL

SPECIFICATIONS AND DIMENSIONS



Solar panel specifications are highly technical & can feel overwhelming. Let's shed some light on solar panel specs! We'll refer to EcoFlow's 400W Rigid Solar Panel as an example ??? the most powerful mountable option EcoFlow offers. Short Circuit Current. Dimension refers to the size of the panel, measured in inches or centimeters



Dimensions (mm / inch) LG400N2W-V5 | LG395N2W-V5 General Data Cell Properties(Material / Type) Monocrystalline / N-type Cell Maker LG Cell Configuration 72 Cells (6 x 12) Number of Busbars 12EA Module Dimensions (L x W x H) 2,024mm x 1,024mm x 40 mm Weight 20.3 kg Glass(Material) Tempered Glass with AR Coating Backsheet(Color) White Frame(Material) ???



Solar panel dimensions & sizes (UK): Simply explained. Specification Residential Solar Panels Commercial Solar Panels; Dimensions: Typically 1.6???1.8 meters in height and around 1 meter in width. Standard 60-cell panel: 1.7 x 1 meter Power output: Typically, commercial panels offer between 400W and 600W per panel,



W solar panel includes a 300mm charging cable that gives you plenty of space to mount multiple panels, maximizing solar input. High Solar Energy Conversion. Made from highly efficient monocrystalline cells, the 400W rigid solar panel has an excellent efficiency rating of 23%, allowing you to charge faster than using similar-sized panels



Get information on the LG 400W High Efficiency LG NeON(R) R Solar Panel with 60 Cells (6 x 10), Module Efficiency: 22.1%, Connector Type: MC4. Find pictures, reviews, and tech specs for the LG LG400Q1C-A6. To properly experience ???

400W PHOTOVOLTAIC PANEL

SPECIFICATIONS AND DIMENSIONS



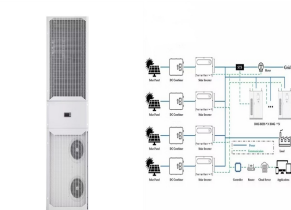
W Solar Panel. Home / Residential / Solar Panels / Hyundai 400W Solar Panel. PDF Download. Small in size, big on power Mono Perc. Up to 435W, 21.8% module efficiency. View Specs about Trina 415W Solar Panel. Trina 500W Solar Panel Trina 500W solar panels provide up to 510W maximum power output & 21.2% module efficiency.



Solar panel size refers to the total amount of power a solar panel can generate over a period of time; Solar panel dimensions refers to the physical size of a solar panel; Solar panel sizes and wattage range from 250W ???



For a 12V solar panel, and for a battery of 200 Ah, the total power stored will be: Battery Power = 12V x (200Ah) = 2400 WH. Inverter Size For 400 watt Solar Panel. The inverter size depends on the amount of power it can handle. An ???



Based on advanced technology from the Vertex platform, the new Vertex S module is perfectly designed to fulfil power, efficiency, size, weight, appearance, mechanical load and reliability requirements of rooftop applications to give the best balance of power and size & weight. This 400W panel, with 21.1% module efficiency gives 65W more power



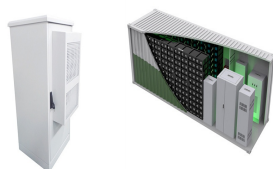
Let us summarize the efficiency of the 400-watt solar panel in the following chart: REC Alpha 400-watt solar panel has the highest efficiency of 20.7% amongst the three solar panel companies we discussed. As the 400-watt solar panel is big in size therefore monocrystalline cells are used for making the solar panel.

400W PHOTOVOLTAIC PANEL

SPECIFICATIONS AND DIMENSIONS



As a leading PV project developer and manufacturer of solar modules with over 40 GW deployed around the world The specifications and key features contained in this datasheet may deviate slightly from our Dimensions 2078 ?? 992 ?? 35 mm (81.8 ???



The most common solar panel sizes for residential installations are between 250W and 400W, while larger commercial installations may use panels up to 500W or more. The size of a solar panel affects its efficiency, with larger panels generally being more efficient but also more expensive and heavier.



Buy Bluebird 400W 24V Mono PERC Solar Panel | BIS Certified PV Module | Free Shipping | Quick Delivery | Switch to Solar & Save on Electricity Bills !! Product Specifications. Model Number BBS24MF400; Cells: 72-5BB Full Cells: Nominal Voltage: 24 Volts: Product Weight: 20.5 Kgs: Net Quantity: 1 Piece: Product Dimensions: 198.5 cm x 100 cm x



Discover the benefits, size, and applications of 400 Watt solar panels, including cost savings and versatile use in various environments like RVs and boats. High-Efficiency Solar Technology: With an impressive 22% conversion rate, the Zendure 400W solar panel is designed to extract the most power possible from sunlight.



Solar Tracker. The first consumer-grade solar tracker: Place a solar panel on the Solar Tracker, and it spins and swivels on two axes to continuously pinpoint the best angle to the sun. It's the ultimate solar charger setup for your portable power station. Auto-track the position of the sun: Leave the Solar Tracker out overnight, and it will automatically start tracking the sun at the first

