

420W PHOTOVOLTAIC PANEL

SPECIFICATIONS AND DIMENSIONS



420W Solar Panels (Trina Vertex S+) 420W Solar Panels (Trina Vertex S+) Get a quote SpecsSheet Download Spec Sheet Description. Small in size, bigger on power . Up to 440W, 22.0% module efficiency with high density interconnect technology Dimensions Solar Panel 1134 x 1762 x 30mm View full details Product Categories. Inverters



Mission Solar 420W 72 cell solar panel features class leading power output that makes it ideal for any installations including commercial and rooftop systems - A1 Solar Store Dimensions LxWxH: 82.12 x 41.5 x 1.58 ???



Product Specifications ?? experience performance 9 A module Current compatible with MLPE 430 wp 20.7 w ft2 ELIGIBLE LEAD-FREE 22.3% Efficiency rohs cOMPLIANT rec Alpha Pure-R SERIES COMPACT PANEL Size. Ref: PD-DS-AAPR Rev 32 10.23 S T C N M O T 85 90 95 100 105 100 200 300 400 500 600 700 800 900 1000 affordable solar power. As Solar's



The JA Solar JAM54S31-420/LR is a 420W half-cell solar panel with a stylish all-black design. TECHNICAL SPECIFICATION. Mono cells; No. of cells: 108 (6 x 18) Solar PV Panels|Dimensions|Length: 1762 mm: Solar PV Panels|Dimensions|Width: 1134 mm: Solar PV Panels|Dimensions|Depth:



Used SunPower 420W Solar Panel. Features: More lifetime energy and savings; Patented solid metal foundation prevents breakage and corrosion; Specifications: Rated Power: 420W; Open circuit voltage (VOC): 85.3 V; Max power voltage ???

420W PHOTOVOLTAIC PANEL

SPECIFICATIONS AND DIMENSIONS



The dimensions of the panels also permit installing them on top of most vehicles, so a 420 watt solar panel for RV is also feasible. Specifications of 420 Watt solar panels 420W solar panels tend to weigh about 52 lbs, being ???



Decrease quantity for Voltacon Solar Panel 420W Half Cut 120-Cells All Black Monocrystalline Increase quantity for Voltacon Solar Panel 420W Half Cut 120-Cells All Black Electrical Specifications and Dimensions Part Number: HS420M-54-18X. Watt: 420Wp. Max Snow Load. 5400Pa, 112lb/ft². Max Voltage Vmp. 31.74V. Cell Size. Mono(182 x 91 mm)

114KWh ESS

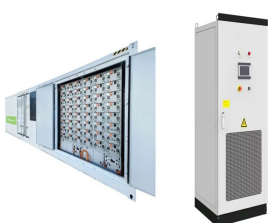


A growing selection of REC panels installed around the world. Solar installers. All the technical specifications of REC's lead-free, high efficiency solar panel for residential and commercial installations. eng. eng_us. deu. esp. fra. ita. jap. ???

REC BMS CE MARK UN38.3 UN38.3



Photovoltaic Technology Cable 4.0mm?? (0.006 inches??), MC4 EVO2 / TS4* 144 cells White Module Dimensions Weight Glass Encapsulant material Backsheet Frame J-Box Cables Connector No. of cells 43?C (?2?C) - 0.34%/?C - 0.25%/?C 0.04%/?C Temperature Coe??cient of P_{MAX} Temperature Coe??cient of V_{OC} Temperature Coe??cient of I_{SC}



State Solar RankingCheck the rank of your state and if it is good for going solar.; Solar & Electrical calculatorsTop tools for easy conversions and system design.; Solar System GuideChoose equipment, participate in ???

420W PHOTOVOLTAIC PANEL

SPECIFICATIONS AND DIMENSIONS

Commercial and Industrial ESS

- Budget-Friendly Solution
- Renewable Energy Integration
- Modular Design for Flexible Expansion



Get information on the LG 420W High Efficiency LG NeON(R) R Solar Panel with 66 Cells (6 x 11), Module Efficiency: 21.1%, Connector Type: MC4. Find pictures, reviews, and tech specs for the LG LG420QAK-A6. To properly experience ???



similar cost to above-roof panels. Simple, beautiful, durable. Solar never looked so good. M10 Solar Photovoltaic Panels Pitched Roof Integration Head Detail Sill Detail Side Detail Gutter Detail (joined flashings) Viridian Solar, Atlas Building, 68 Stirling Way, Papworth, Cambridge CB23 3GY +44 1480 839 865 Tile Tile



A convenient handle is designed to make it effortless to carry wherever there's the most sunlight. Tech Specs BLUETTI PV4200 420W Solar Panel Power: 420W Lamination: ETFE (Ethylene tetrafluoroethylene) Cell Type: Monocrystalline Silicon Cell Efficiency: Up to 23.4% Open Circuit Voltage (OCV): 44.3V Short Circuit Current (Isc): 12.2A General Connector: Standard MC4 ???



REC Alpha Pure-R REC420AA Pure-R 420W Solar Panel. Building on REC's multiple award-winning innovations, the REC Alpha Pure family of solar panels empowers you to take full advantage of solar energy. Packing in cutting-edge technologies to deliver higher power density, stunning aesthetics, and minimal environmental impact ??? all with the

114KWh ESS



This page contains information about the Trina Solar TSM-365DEG14C(II) 15% (420W) solar panel. To compare this to other PV modules, click here. Manufacturer Data Sheet; Installation Manual; DC Electrical Characteristics. STC Power Rating 420W ; PTC Power Rating 390.65W 1;

TSS BMS CE MSD 100A2 15

420W PHOTOVOLTAIC PANEL

SPECIFICATIONS AND DIMENSIONS



Module Dimensions 1762x1134x30 mm Weight 21.8 kg Glass 3.2 mm, High Transmission, AR Coated Heat Strengthened Glass Encapsulant material EVA/POE Backsheet Black-White Frame 30 mm Anodized Aluminium Alloy J-Box IP 68 rated Cables Photovoltaic Technology Cable 4.0 mm? Landscape: 1100/1100 mm Portrait: 280/350 mm* Connector TS4 / MC4 EVO2*



For example, a regular 60-cell solar panel weighs about 18kg (40 pounds), while a 72-cell solar panel weighs about 23.5kg (52 pounds). 72-cell panels are taller and harder to handle, making installing them on a roof tough. Furthermore, because of their larger size, 72-cell panels can be more affected by strong winds during installation.



Dual glass monocrystalline module The Trina Solar 420W Vertex S dual glass mono panel is a small-sized solar panel that packs a powerful punch. Its dual-glass design makes it more secure and sustainable, and it has ultra-low degradation, resulting in a longer warranty and higher output. This panel is a universal solution for residential and commercial



Table 1: Solar panel cable for amp chart for 90°C (194°F) Copper. Amperage tables exist for copper cables reflecting the current carrying capacity of the different gauge cables at different operating temperatures. Temperatures as high as 150°C are considered when selecting cables for wiring up solar panels.



Now, Tesla is again launching a new solar panel: the Tesla T420S photovoltaic module. SOLAR SIZE NUMBER OF PANELS POWER RATING ROOF AREA COVERED; Small: 12: 4.08 kW: 240 sqft: Medium: 24: 8.16

420W PHOTOVOLTAIC PANEL

SPECIFICATIONS AND DIMENSIONS



Simply unfold the solar panel, snap the kickstand, and adjust the angle, then it's ready to work. Plus, the folding design makes it ultra-compact and space-saving for transportation and storage. Dimensions Assembled Depth (in inches) 38.3 Assembled Height (in inches) 105.3 PV420 Solar Panel | 420W BLUETTI solar panel is easy to set up



Product Description: The JA Solar 420W Mono PERC Solar Panel is equipped with multi-busbar PERC cells, offering increased output, improved performance in varying temperatures, improved shading effects, decreased risk of hotspots, and better resistance to mechanical loading. Please note that panel dimensions and specifications are subject to



Many solar panel companies make small solar panels designed specifically for small roofs. You can also opt for high-efficiency solar panels that have conversion rates as high as 23% (compared to the industry average of ???)



That's basically a 66x39 solar panel. But what is the wattage? That is unfortunately not listed at all. 72-cell solar panel size. The dimensions of 72-cell solar panels are as follows: 77 inches long, and 39 inches wide. That's a 77x39 solar panel; basically, a longer panel, mostly used for commercial solar systems. 96-cell solar panel size.



LONGi Hi-MO 5 high-efficiency PV modules are widely used from alpine grasslands to desert wastelands, and from ponds and vegetable beds to residential dwellings, with its advantages of "higher power, lower degradation and higher reliability", click to learn more. Large-format modules with M10 wafer size use dual-glass and frame packaging to

420W PHOTOVOLTAIC PANEL

SPECIFICATIONS AND DIMENSIONS



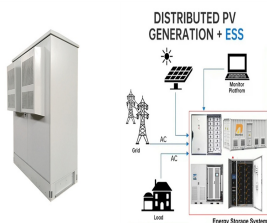
Discover the Alpha Pure 2 420W Solar Panel, ideal for both residential and commercial solar installations. Enjoy exclusive contractor discounts, wholesale pricing, and superior efficiency with REC's cutting-edge technology.



Module Efficiency: Up to 22.8%; Nominal Power (DC): 420W ??? 440W. Output Power (AC): 369 VA ??? 384 VA. Temperature Coefficient: -0.29%/°C; Operating Temperature: -40°F to 185°F; Residential SunPower M Series solar panels are specially designed for the SunPower Equinox System and feature 66 Maxeon Gen 6 solar cells to deliver a nominal DC power output of 420 ???



This Canadian Solar 420Wp TOPHiKu6 Solar Panel (CS6R-420T) features TOPCon N-type technology and it is ideal for residential installations. Dimensions ??? 1722 x 1134 x 30 mm; Weight ??? 21.3kg; 25 Year Product Warranty; BAPT8767-64-420W. Downloads. Datasheet for Canadian Solar TOPHiKu6 N-Type ??? CS6R-420T MCS Certificate Installation



SPECIFICATIONS Mechanical Characteristics Cell Type No. of cells Dimensions Weight Front Glass Frame Junction Box Output Cables 22 kg (48.50 lbs) IP68 Rated Electrical Performance & Temperature Dependence Irradiance 1000W/m² AM=1.5 NOCT: Irradiance 800W/m² AM=1.5 *STC: Wind Speed 1m/s Module Type Maximum Power (P_{max}) Maximum Power Voltage (V_{mp})



THE NeON(R) 2 72 CELL - 425W - THE PANEL OF THE FUTURE AVAILABLE TODAY The new LG NeON(R) 2 72 cell has seen many improvements, from longer warranties and higher efficiency to lower degradation. This panel is ideal for commercial systems or solar farms seeking an efficient use of space and a high quality panel with great output efficiency.