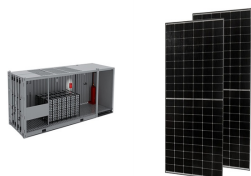


# 50M WIND POWER BLADE PRICE



Instantly recognisable for its rounded nacelle design, the Endurance E-3120 is arguably the most popular agricultural wind turbine among UK landowners. Earthmill have installed over 150 E-3120s on farms across the UK from Aberdeenshire to Cornwall, which is more than any other ???



If you didn't know, the heftiest price you'll pay during your wind farm construction will come from the rotor blades. Generally, these account for up to 60% of the cost of an average turbine, with the transformer, generator, and ???



Founded in June 2007, Sinoma Wind Power Blade Co., Ltd. (hereinafter referred to as "Sinoma Blade" or the Company) is an enterprise specialized in design, research and development, manufacturing, and service of large composite wind turbine blades. Sponsored by Sinoma Science and Technology Co., Ltd., a listed company on China's A-share market



Why is leading edge protection (LEP) of wind turbine blades necessary. Leading edge erosion (LEE) is a phenomenon where the leading edge of a wind turbine blade is eroded due to rain, hail, UV, sand, dust, and numerous airborne particulates. Since wind turbine blades are built to last over 2 decades, this erosion exposes the fiberglass beneath and ultimately impacts the ???



"This history of innovation continues today. Since beginning to develop wind-turbine blades in 1978, we have patented more than 250 inventions." Image 3. In addition to new blade types, LM Wind Power also introduced new technologies to enhance Annual Energy Production, reduce noise, and improve blade reliability.

# 50M WIND POWER BLADE PRICE



4 Axle Extendable Wind Blade Trailer Price. Details of Wind Turbine Transport . Advantage: 1.Trailer's length from 22.25 meters extend to 50 meters The parts are installed very well and are trustworthy. Especially 50m extendable wind ???



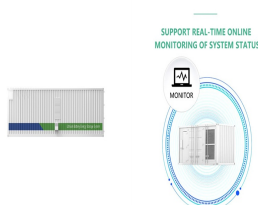
Wind energy is a type of clean energy that can address global energy shortages and environmental issues. Wind turbine blades are a critical component in capturing wind energy. Carbon fiber composites have been ???



-meter blade powers GE Renewable Energy's Haliade-X 12 MW offshore wind turbine, the world's most powerful wind turbine to date. The first LM 107.0 P blade was manufactured in LM Wind Power's offshore blade factory in Cherbourg, France in April 2019. One spin of the Haliade-X can generate enough electricity to power a UK household



The Gaia 133 is rated at 11kW with an expected Reference Annual Energy (RAE) production of 27,502 kW at an average wind speed of 5 m/s. The Gaia is particularly efficient for it's size because it features a very large swept area. The larger blades also allow the turbine to begin producing power at the relatively low cut-in wind speed of 3.5 m/s.



Wind turbine blades are the primary components responsible for capturing wind energy and converting it into mechanical power, which is then transformed into electrical energy through a generator. The fundamental goal of blade design is to extract as much kinetic energy from the wind as possible while minimizing losses due to friction and turbulence.



VEVOR Wind Turbine Generator features a 500W motor, low start-up speed, durable materials, and efficient MPPT controller, perfect for home, marine, and off-grid use. double side blade design, and accurate hub & blade groove. This upgraded wind turbine provides you convenient and

# 50M WIND POWER BLADE PRICE

---

fast assembly, avoiding the wrong installation of flange type

# 50M WIND POWER BLADE PRICE



Peter May runs through the basics of wind power and assesses the costs, life cycle and annual outputs of differently sized turbines. Wind speed data is generally only available for 10-50m above the ground ??? ???



The DIRECTWIND 52 is a pitch-controlled, variable speed wind turbine optimized for distributed energy generation in medium wind speeds (wind class IIA). With its 52-metre rotor and range of tower heights, it is suitable for all locations ??? and ???



For all wind turbine systems you also need to take into account the maintenance costs and the price that needs to be paid if you have to apply for planning permission. A wind turbine is built to last over 20-25 years but a number of important parts may need replacing before that date such as batteries or the inverter that converts your DC current

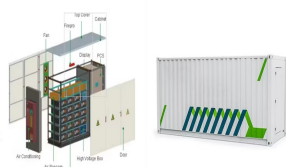


Price Regular price R 101,146.00 incl. VAT R 101,146.00 incl. VAT Sale price R 74,923.00 incl. VAT R 74,923.00 incl. VAT Save R 26,223.00  
ReGen LX 3KW Wind Turbine Features. 5 Blade; designed for low wind area, light breeze start ???



The BENZ PMG DD 900kW wind turbine ??? with a tower hub heights available of 50m and 75m guarantees excellent yields in the 900kW category at inland sites. With a cut-in wind speed as low as 3m/s, the direct drive technology enables the turbine to make efficient use of the prevailing wind conditions at the respective sites to produce sufficient electrical energy.

# 50M WIND POWER BLADE PRICE



To protect the turbine from lightning strikes, all LM Wind Power blades produced since 2011 feature the world-class SafeReceptor Insulated Lightning Protection System. The system is certified by GL according to IEC 61400-22(2010) and IEC 61400-24(2010). 1.5 MW - 2.0 MW NOMINAL POWER OUTPUT. BLADE TYPE.



The wind turbine blade market size exceeded USD 88.47 billion in 2023 and is anticipated to expand at 6.9% CAGR between 2024 and 2032, due to the shifting focus towards wind energy sources along with rising requirement for reliable and efficient energy worldwide.



This history of innovation continues today: since beginning to develop wind turbine blades in 1978, we have patented more than 190 inventions. Learn more about innovative blade engineering. HEADQUARTERS. LM Wind Power Jupitervej 6 6000 Kolding Denmark. Tel +45 79 84 00 00 Fax +45 79 84 00 01. [info@lmwindpower](mailto:info@lmwindpower) . LMWINDPOWER .



Here's what it takes to build the most advanced, reliable and high-quality wind turbine blades in the industry. EXPLORE. HEADQUARTERS. LM Wind Power Jupitervej 6 6000 Kolding Denmark. Tel +45 79 84 00 00 Fax +45 79 84 00 01. [info@lmwindpower](mailto:info@lmwindpower) . LMWINDPOWER . Disclaimer Cookies privacy



A typical wind turbine blade can cost around \$154,000 but this includes the costs of materials, the wind turbine manufacturers" labor costs, and maintenance. The initial purchase cost is around half of this total, at \$73,600. ???



ReGen LX 1.5KW 48V 5 Blade Wind Turbine R 41,999.00 Original price was: R41,999.00. R 30,599.00 Current price is: R30,599.00. Add to cart; Kestrel e300i 1000W 24V-36V-48V Battery Charging Wind Turbine Kit R 51,999.00 Add to cart; Primus Air 30 400W Wind Turbine with built-in

# 50M WIND POWER BLADE PRICE

---

controller R 14,399.00 Add to cart; Kestrel e400n 3500W 48V Battery

# 50M WIND POWER BLADE PRICE

114KWh ESS



114KWh ESS

In 2023, wind turbine prices were more steady. Midway through the year, Nordex, based in Germany, recorded an average selling price of ???890,000/MW or about \$965,000/MW USD. [1] In May 2023, Siemens Wind turbine blade tip speeds regularly range from 120-180 miles per hour, though they vary due to wind conditions.



With over 40 years of innovation that continues to shape the wind industry, LM Wind Power is a pioneer in advancing wind turbine blade technology and setting new standards for sustainability, efficiency, and digital industrialization. Learn ???

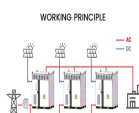
SUPPORT REAL-TIME ONLINE  
MONITORING OF SYSTEM STATUS



50M Extendable Wind Blade Trailer. 4 Axle Extendable Wind Blade Trailer Price. Details of Wind Turbine Transport . Specification? 1/4 ? Brand: TITAN 58M 4 Axle Extendable Blades Wind Turbine Trailer. Dimension: 22,450mmX3120mmX 1580mm. Total length: 61,000mm after extension. Loading capacity: 90 Ton. Hydraulic power station: Diesel engine. Axle: 4 axle



W Small Wind Generator Turbine Kit 3 Blade Generator Power Parts Turbine Kit for Home Marine Charging (Blue 12V). Survival Wind Speed: 50m/s : Number Of Blades: 3 : Blade Length: Approx. 600mm / 23.6in : Blade Material: Nylon fiber : Found a lower price? Let us know. Although we can't match every price reported, we'll use your



Our innovative designs have defined generations of wind turbine blades, and we continue to inspire and define the industry with cutting-edge technology and products. EXPLORE > HEADQUARTERS. LM Wind Power Jupitervej 6 6000 ???

# 50M WIND POWER BLADE PRICE



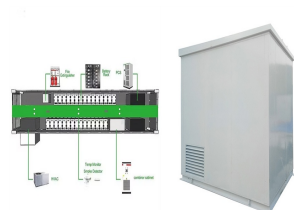
Rated power: Max 72 kW: Cut in wind speed: 3 m/sec. (6.7mph) Cut out wind speed: 25 m/sec. (56mph) Rated wind speed: 10 m/sec. (22.4mph) Survival wind speed: 52,5 m/sec. (117mph) Passive power regulation: Pitching (blade-angle adjustment) Active power regulation: Fully variable back-to-back IGBT system: Noise emission at 8 m/s: 45dB(a) at 100m



The US wind power industry led the world in annual wind power capacity additions from 2005 through 2008, but since then China has outpaced the US and emerged as the biggest market for wind power capacity, the company says. And the push for alternative electricity production continues elsewhere. The largest offshore wind farm in the world



Wind turbines convert the kinetic energy from the wind into electricity. Here is a step-by-step description of wind turbine energy generation: Wind flows through turbine blades, causing a lift force which leads to the rotation of the blades.. The central rotor shafts, which are connected to the blades, transmit the rotational forces to the generator.. The generator uses ???



In-house testing to deliver reliable wind turbine blades, faster. All new 1m wind power blade types undergo a series of tests at our certified laboratories for every aspect of performance and reliability. We are the only wind turbine blade manufacturer to have our very own windtunnel and in-house testing facilities for full scale blade tests.