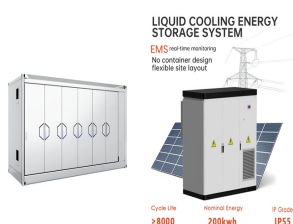


525W PHOTOVOLTAIC PANEL



W Mono Perc Half Cell All Black Rigid Solar Panel -

LR5-66HTH-525M-BF. Aesthetically pleasing appearance with black frame, well suited for domestic roof top installations. Key features of the Longi 525W Mono Perc Half Cell All Black Rigid Solar Panel: Based on M10 wafer, best choice for ultra-large power plants



Now you can just read the solar panel daily kWh production off this chart. Here are some examples of individual solar panels: A 300-watt solar panel will produce anywhere from 0.90 to 1.35 kWh per day (at 4-6 peak sun hours locations).; A 400-watt solar panel will produce anywhere from 1.20 to 1.80 kWh per day (at 4-6 peak sun hours locations).; The biggest 700 a?|



Designed with the future in mind, this solar panel is engineered to be compatible with forthcoming energy solutions, ensuring your installations remain relevant and efficient in the evolving solar energy landscape. Photovoltaic module PV panel 525W Longi LR5-66HTH-525M Hi-MO 6 Black Frame Black frame. Price a?!53.23 +VAT. PLN 229.00 1 x



PALETA 31ks, Fotovoltaicky solarni panel TAMESOL 550Wp FULL BLACK, A?erny backsheet . Na dotaz 2 066,12 KA? bez DPH. 2 500 KA? Do koA!iku. TAMESOL 550W full black, A?erna zadni strana model: TM-550M-144AB A?erny ram: 2279 mm x 1134 mm x 35 mm kod SVT36200 Kod: TAM550FBPAL. Fotovoltaicky solarni panel TAMESOL 550Wp FULL BLACK



LONGi's high-efficiency PV modules are widely used all over the world, from alpine grasslands to desert wastelands, and from ponds and vegetable beds to household dwellings. LONGi's ultra-high-value PV module products continue to benefit customers and local economy with its advantages of "higher power, lower degradation and higher reliability".

525W PHOTOVOLTAIC PANEL



The ET Bifacial Mono 525W-545W is a high-performance solar panel manufactured by ET Solar. With a power output ranging from 525 watts to 545 watts, this solar panel is designed to provide excellent energy yields for residential and commercial applications. One of the key features of this solar panel is its bifacial design, which allows [a?]



Suzhou Solar Tech Co., Ltd is a company specializing in trading solar PV Products, including solar panels, solar power system and accessories. Half Cell Ja 370W 380W 390W 400W 525W 530W 535W 540W 545W 550W Mono Ground Roof Mounted Complete Solar Panel Kits FOB Price: US \$0.25-0.33 / Watt. Min. Order: 1 Watt



Renesola's photovoltaic panels come with a positive power tolerance of 0~+3%, ensuring that the panels consistently produce more energy than their rated capacity. The maximum efficiency of the module is 21.39%, which is achieved through advanced module technology, including gallium-doped wafers, non-destructive cutting, and MBB half-cut technology.



Shop / Solar Panels / Price Range / \$200+ / Canadian Solar 525W Bifacial Solar Panel. Canadian Solar 525W Bifacial Solar Panel \$ 200.00-Out of stock. New Out of Box Canadian Solar 525W Bifacial solar panels! Some panels might have minor scuffs and/or scratches to the frame. Please see pictures for reference. Get yours today!



3.2mm Low-Iron Content, High-Transmission, PV Solar Glass with Anti Reflective Coating Junction Box IP-68 rated with 3 bypass diodes Output Cables 0.3-meter Symmetrical Cables Connectors Multi-Contact/Staubli MC4 HELIENE Solar a?]

525W PHOTOVOLTAIC PANEL



The JA Solar 525W Bifacial Mono PERC Half-Cell MBB LB Traceable Silver Frame MC4 (JAM66D42 505-530 LB) solar panel is a 525W bifacial monocrystalline module with 132 Half-Cell technology. Assembled with 11BB PERC cells, the half-cell configuration of the modules offers the advantages of higher power output, better temperature-dependent



Introducing the AstroSemi CHSM72M-HC 525W-545W solar panel by Astronergy, a state-of-the-art and high-performance photovoltaic module that represents excellence in renewable energy technology. Designed to meet the energy demands of both residential and commercial applications, this solar panel offers a reliable and efficient solution for clean and sustainable a?|



Explore the LR5-66HTH-525M, a high-efficiency 525W solar panel featuring advanced half-cut cell and PERC technology. Perfect for residential and commercial installations, it offers exceptional performance, durability, and reliability for enhanced solar energy systems.



Introducing the Elan Series ASB-M10-144-520-545 by Adani Solar, an exceptional solar panel that represents a remarkable blend of cutting-edge technology and unmatched performance. This photovoltaic module is engineered to deliver high-efficiency power generation, making it an ideal choice for both residential and commercial applications. The Elan Series ASB-M10-144-520 a?|



mm Cells Mono PERC with MBB & Half-cut Technology, Sunpal HiMAX5 144 Cell Series Solar Panel Power Range 525W 530W 535W 540W 545W 550W. 575W-605W PERC Half Cut 156 Cells PV Module Monocrystalline Solar Panel.

525W PHOTOVOLTAIC PANEL



W-525W TOPCon (Venusun Plus) achieves a lightweight design (only 23.5kg) based on a large panel format, ensuring efficient and reliable high-power generation even in harsh environments. It also enhances mechanical load capacity, with a maximum static load of 5400Pa on the front and 2400Pa on the back.



PERC Module 525W Super High Efficiency 22.4%. Combining the best technology and design, it also reduces LCOE and installation costs. The Super High Power mono modules with dimensions of 2063 x 1134 x 30mm, have the a?|



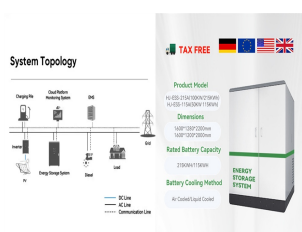
Panel solar LR5-66HTH HIMO X6 Explorer Monocristalino de 132 células (6x22) HC tecnología PERC con una potencia de 525W de la marca Longi. Detalles técnicos STC: Potencia nominal (Pmax) 525W; Tensión de circuito abierto (Voc) 45.85V; Tensión de máxima potencia (Vmp) 38.68V; Corriente de cortocircuito (Isc) 14.05A



With SolarDesignTool, you can create a design from scratch and generate a full PV permit package in as little as 15 minutes. This page contains information about the Canadian Solar CS6W-525MB-AG (525W) solar panel.



ECE Aarna Series: ECE 360W To 525W. The top 10 solar panels list is incomplete without the mention of the ECE Aarna series: ECE 360W to 525W. Which is the best solar panel variant? Monocrystalline solar panels are the best solar panel variant. These solar panels are more efficient than polycrystalline and thin film solar panels.

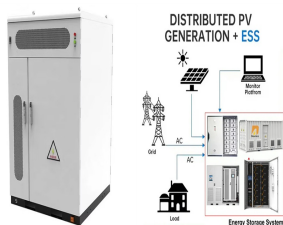


Photovoltaic panels 545W - Swiss Solar IBEX 144MHC-EiGER-525-545 FULL BLACK Discover the power of Swiss Solar IBEX 144MHC-EiGER-525-545 FULL BLACK photovoltaic panels, a 545W high-performance solar solution designed to provide optimal energy

525W PHOTOVOLTAIC PANEL

generation for residential and commercial applications. These cutting-edge solar panels combine advanced a?|

525W PHOTOVOLTAIC PANEL



The JA Solar 525W Bifacial Mono PERC Half-Cell MBB LB Traceable Silver Frame MC4 (JAM66D42 505-530 LB) solar panel is a 525W bifacial monocrystalline module with 132 Half-Cell technology. Assembled with 11BB a?|



Sunway Jinko 144cells 182mm 530w 550w Monocrystalline Half Cell Solar Panel Room 403, Floor 4, Building 7, Cross-Border E-Commerce Supervision Zone, 50 Meters North Of Huguang Road And Qianzhang Road, Hefei, Anhui, China



Bifacial photovoltaic panels 545W - Swiss Solar IBEX 144MHC-EiGER-525-545 BIFACIAL GLASS The Swiss Solar IBEX 144MHC-EiGER-525-545 BIFACIAL GLASS is a series of high-performance bifacial monocrystalline photovoltaic a?|



Panel sizes are 1485x668x30mm. This 525w Large Solar Panel Kit is designed for off-grid, campervans, motorhomes and yachts/boats. The included Victron SmartSolar MPPT 150/35 charge controller ensures maximum power output and battery charging efficiency.



SOLAR PV MODULE 144 HALF CUT CELL 525-550 W BIFACIAL DUAL GLASS TRANSITION TO A BRIGHTER TOMORROW Assembled with high-ei!?iciency multi-busbar PERC cell, the half-cell conil!?uration of the modules oil!?ers the advantage of higher power output, better temperature-dependent performance, reduced shading ei!?ect on

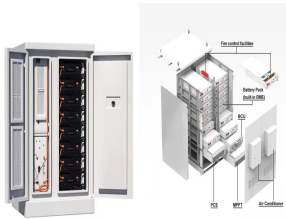


LONGi High-efficiency solar Module, widely adopting PERC solar cells technology, Half-cut Module Technology and Bifacial PV technology, Mono Silicon Crystalline Technology has become a leading manufacturer and brand in the a?|

525W PHOTOVOLTAIC PANEL



The Photovoltaic Module 525W (Model LR5-66HTH-525M) from LONGI is a high-efficiency solar panel designed for residential and commercial solar installations. Featuring the advanced Hi a?]



China GCL solar panel catalog of Tier 1 Gcl Brand Monocrystalline Solar Module 440W 450W 460W Solar Cells, Tier 1 Gcl 9bb 525W 530W 540W 550W 560W Solar Double Glass Panel for Factory Price provided by China manufacturer - Hefei Pinergy Solar Technology Co., Ltd., page1.