

555W PHOTOVOLTAIC PANEL WORKING VOLTAGE



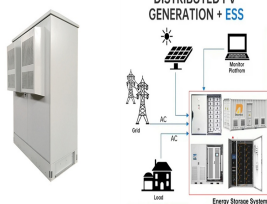
Quick Answer: A solar panel typically generates a voltage ranging from 5 volts for small, portable panels to around 30 to 40 volts for standard residential panels under full sun.. What Is Solar Panel Voltage? Voltage, in the context of solar panels, refers to the electrical potential difference generated by a panel is a fundamental aspect of solar energy ???



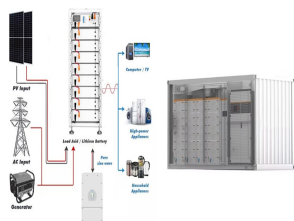
The panels have a power output ranging from 535W to 555W, making them one of the most powerful solar panels on the market. With their high efficiency and reliability, Canadian Solar HiKu6 CS6W panels are an excellent choice for anyone looking to invest in solar energy. The Canadian Solar HiKu6 CS6W solar panel is compatible with these



This solar panel wattage calculator allows you to calculate the cost of your solar energy according to the energy consumption of your household appliances.If you want to know more about solar power and the panel size, feel free to explore our fun and helpful solar panel calculator.????,?. Are you ready to find out how much solar energy and cost your house needs?



Description Jinko 555 Watt Mono Solar Panel. Model: JKM-555M-72HL4-V Type: Mono-Facial Module Power Output: 555W Cell Count: 144 Cells Frame: Anodized Aluminium Alloy Key Features: Positive Power Tolerance: 0 to 3% Multi Busbar Technology: Enhances light trapping and current collection, improving module power output and reliability. Reduced Hot Spot Loss: ???



The Jinko 555W solar panel, which is monocrystalline, is considered one of the best solar modules available currently due to its high efficiency and durability. Similarly, the Jinko 555W panel is also of prime quality, with dimensions of 2278x1134x30mm (89.69x44.65x1.18 inch) and an efficiency rate of up to 21.48%.

555W PHOTOVOLTAIC PANEL WORKING VOLTAGE



PRODUCTS POWER RANGE TSM-DE19 535-555W MAXIMUM POWER OUTPUT MAXIMUM EFFICIENCY POSITIVE POWER TOLERANCE 555W 21.2% Founded in 1997, Trina Solar is the world's leading Datasheet - Trina Solar Panel (2021 models) - 535 W | 540 W | 545 W | 550 W | 555 W - India (Mono crystalline) Author: Loop Solar



While most portable power stations have solar charge controllers built-in, typical 12V batteries like the ones in RVs do not. That's when it's important to add a solar charge controller between the solar panel and the battery. Consider a scenario where you have a 200W solar panel with a working voltage of 20V and an amperage of 10A.



W JA Solar Panels are an advanced and reliable solution for both residential and commercial solar power systems, offering high efficiency and durability. Manufactured by JA Solar, one of the world's leading solar technology companies, these panels are designed to deliver superior performance even in challenging environments. Key Features:



PRODUCTS POWER RANGE TSM-DE19 535-555W MAXIMUM POWER OUTPUT MAXIMUM EFFICIENCY POSITIVE POWER TOLERANCE 555W 21.2% Founded in 1997, Trina Solar is the world's leading total solution provider for solar energy. With local P-V CURVES OF PV ???



Solar panels 555W - Renesola RS6-535-555M-E3 Invest in the Renesola RS6-535-555M-E3 solar panels for exceptional energy generation performance. These 555W high-performance solar panels feature advanced module technology, ???

555W PHOTOVOLTAIC PANEL WORKING VOLTAGE



LONGi Hi-MO 5 high-efficiency PV modules are widely used from alpine grasslands to desert wastelands, and from ponds and vegetable beds to residential dwellings, with its advantages of "higher power, lower degradation and higher reliability", click to learn more.



-535-555W US(UL) TwinPlus-108-395-415w US (UL) Solar Module ROW. DRACO-N-156-615-635W; How Solar Panels Work: Harnessing the Power of the Sun. durability, and warranty are critical factors. The efficiency of a solar panel refers to its ability to convert sunlight into electricity, while durability ensures a longer lifespan.



2. Enter the panel's max power voltage (denoted V_{mp} or V_{mpp}). It may also be called the optimum operating voltage. 3. Enter the panel's max power current in amps (denoted I_{mp} or I_{mpp}). It may also be called the ???



Description Jinko Solar Panel Tiger 555W Mono-Facial JKM550M-72HL4
The Jinko 555W Tiger Mono Facial solar panel is a 555W monocrystalline module with 144 cells from Jinko Solar, one of the world's leading manufacturers of the ???



555W Jinko solar panel is a monocrystalline split cell module from one of the world's leading manufacturers of the photovoltaic industry. The solar panel comes with a massive 5-year product warranty and a 25-year linear power warranty. Features. Multi Busbar Technology Better light trapping and current collection to improve module power output and reliability.

555W PHOTOVOLTAIC PANEL WORKING VOLTAGE



Working Without Battery Solar System; Portable DC Solar System; 555W Solar Panel TFL Series TFL-210X30_10_36 Maximum Power-Pm [W] 555W Open Circuit Voltage-Voc [V] 48.081 Short Circuit Current-Isc [A] Each set solar ???



Key Features of Renesola RS6-535-555MBG-E3 Double Glass Bifacial Solar Panels: Bifacial Solar Panel Technology: The Renesola RS6-535-555MBG-E3 panels harness advanced bifacial solar technology, capturing sunlight on both sides of the panel and significantly increasing energy output. Power classes (maximum Wp) 555 W. Installed on: COMERCIAL



This article describes how you can troubleshoot a solar system in basic steps. Common issues are zero power and low voltage output.. Troubleshooting a solar (pv) system. Below I will describe basic steps in troubleshooting a PV array. Quality solar panels are built and guaranteed to produce power for 25 years. For that reason, it's most likely that a problem is ???

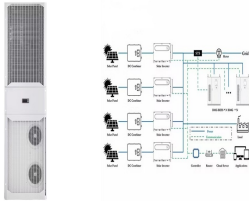


How High-Efficiency Solar Panels Work. High-efficiency solar panels employ advanced technologies to increase their power output. They utilize materials such as monocrystalline or polycrystalline silicon to absorb sunlight and convert it into electricity. 555W Solar Panel for Enhanced Renewable Power Generation. Advanced 670W Solar Panel



Force H2 is the high voltage battery storage system provided by Pylontech. Showroom and Warehouse - City of Pazardzhik. Work time: Mon - Fri 8:00-12:00 and 13:00-17:00. Saturday and Sunday with appointment. Address: Pazardzhik, 11 Milio Voivoda St. Phone: 0890 933 332. Photovoltaic panel Longi 555W ??? LR5-72HIH. Solar module Longi 555W

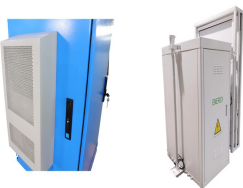
555W PHOTOVOLTAIC PANEL WORKING VOLTAGE



555W Solar Panel for Enhanced Renewable Power Generation. Advanced 670W Solar Panel. Maximize Energy Generation with our High-Performance 665W Solar Panel. Advanced 660W Solar Panel. Exploring the Benefits and Applications of 655W Solar Panels. Unleashing the Potential of 600W Solar Panels.



High power power ? 182 mm wafer + 156 / 144 dual cell + PERC technology ? Module Power up to 590 W ? 2.7% more energy yield in module lifetime. Lower BOS cost & LCOE cost ? Reduce 5.6% BOS cost ? 4.5% lower LCOE ? Compatible with mainstream trackers. Enhanced reliability



Bifacial photovoltaic panels 555W - Jinko Solar Tiger Pro 72HC-BDVP 535-555W Jinko Solar Tiger Pro 72HC-BDVP 535-555W bifacial photovoltaic solar panels are a high-performance and efficient solution for residential, commercial, and utility-scale solar projects. These solar panels feature 72 half-cell high-efficiency solar cells, which allow for higher power output and greater ???



W N-type Monocrystalline Solar Panel promises good low sunshine performance, excellent weather resilience and impressive durability. Need Help? Call us 0768 016 141 ; About Us; SMBB Technology: improves module power output and reliability through better light trapping and current collection;