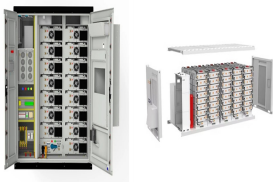
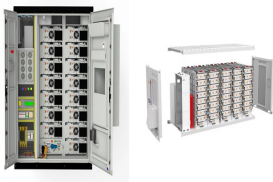


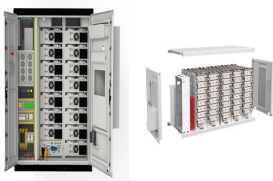
570 WHAT IS THE LENGTH AND WIDTH OF THE PHOTOVOLTAIC PANEL



What are the different sizes of solar panels? There are 3 standardized sizes of solar panels, namely: 60-cell solar panels size. The dimensions of 60-cell solar panels are as follows: 66 inches long, and 39 inches wide. That???s basically a 66x39 solar panel. But what is the wattage? That is unfortunately not listed at all. 72-cell solar panel size.



What size solar panel do I Need? The most common solar panel sizes for residential installations are between 250W and 400W, while larger commercial installations may use panels up to 500W or more. The size of a solar panel affects its efficiency, with larger panels generally being more efficient but also more expensive and heavier.



How much space does a solar panel take up? In the 4th column there, you can see the calculated solar panel square footage as well. Here are a few examples of the dimensions of the most popular solar panel wattages: A typical 100-watt solar panel is 41.8 inches long and 20.9 inches wide. It takes up 6.07 sq ftof area.

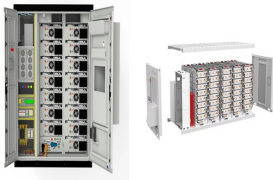


How many watts a solar panel can fit on a roof? In the UK, the typical size or wattage of a residential solar panel is 250W to 450W. Solar panel dimensions refer to the overall length, width and height of the panel. These measurements are crucial because a panel???s physical dimensions will dictate how many panels you can fit on your roof.

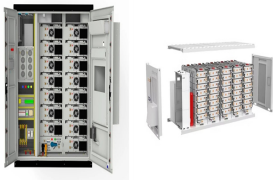


How big is a 96 cell solar panel? 96-cell solar panel size. The dimensions of 96-cell solar panels are as follows: 41.5 inches long, and 63 inches wide. That???s a 63x41.5 solar panel. This form is a bit shorter but wider. This is the typical classification of solar panel sizes (based on the solar cell size). It???s a bit theoretical and quite useless for most calculations.

570 WHAT IS THE LENGTH AND WIDTH OF THE PHOTOVOLTAIC PANEL



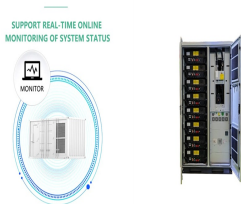
What size solar panel should I buy in the UK? Nevertheless, the typical size of a residential solar panel in the UK is 250W to 450W. It's important to note that when considering solar panels for your home or business, it's recommended to focus primarily on the wattage or power output rather than the physical dimensions.



We know you have lots of queries regarding solar panel sizes and wattage, so let us discover their answers. How to Calculate Solar Panel Sizes and Wattage. When designing an efficient and cost-effective PV system for ???



How does solar panel size relate to the amount of electricity it produces? Different solar panels generate different amounts of energy, and this capacity to produce power isn't just about size. For example, a smaller sixty cell solar panel with an efficiency of 20% can generate more electricity than a seventy-two-cell unit that only has an efficiency of 15%.



The dimensions of the panel ??? height x width measured in metres or centimetres. The maximum power output of the panel ??? measured in wattage, or "W" The size of a solar panel will directly impact the number of solar cells that can fit onto the panel, which determines how much electricity can be generated from captured solar power.



What Size Cable to Use for a 12v Solar Panel Differences in Size. Different solar systems need different wire sizes. Even different parts of a solar system may need different sizes. Solar power usually needs a 12 gauge ???

570 WHAT IS THE LENGTH AND WIDTH OF THE PHOTOVOLTAIC PANEL



Solar Panel Size. It focuses on maximum electricity generation and overall capacity rather than the quantity of panels. To calculate the required system size, multiply the number of panels by the output. For example, a 6.6 ???



This solar panel is a photovoltaic (PV) panel that offers several advantages over the standard solar panel size, making them a good alternative. Pros. Some of the benefits of this solar panel type include: Sleek weight and flexibility ??? because of its weight, this solar panel is easier to install in different locations.



the solar energy production or the solar power output for common configurations in residential projects or commercial projects can be determined by determining a few key factors like the solar panel wattage, the average irradiance, the panel efficiency, and your energy demand. Solar Panel Size and Wattage

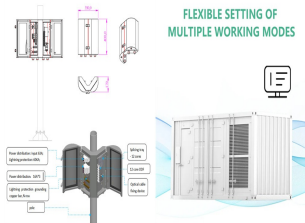


Importance of Peak Sunshine Hours in Deciding Panel Size. Knowing your area's peak sunshine hours helps determine your solar power needs. Commercial solar panels will generate more power during these peak hours. If your region gets a lot of sun, your panels will generate power more efficiently. Final Steps in Sizing a Solar System for Your



Calculating the string size; The string size of inverters can be calculated using software; however, there is some information that you will need beforehand. This information includes the Voc of the PV module, Mppt range of the inverter, Vmp of the PV module, and Vmax range of the inverter.

570 WHAT IS THE LENGTH AND WIDTH OF THE PHOTOVOLTAIC PANEL



1. Determine the Size of One Solar Panel. Multiply the size of one solar panel in square meters by 1,000 to convert it to square centimeters. Example: If a solar panel is 1.6 square meters, the calculation would be 1.6 ???



Here you can simply input what size solar panel you have (100W, 200W, 300W, and so on) and how many peak sun hours you get (average is about 5 hours). You get an estimate of how many kWh per day such a solar panel will ???



Alright, let's have a look at the length and width of typical solar panels, with wattage (very important), and complete with area or square footage (useful when calculating how many solar panels you can fit on a roof):



What Are the Standard Solar Panel Sizes? When it comes to standard solar panel sizes, like 300w or 500w, it is essential to determine the size of a solar panel system based on these standard sizes. The dimensions of a standard solar panel, no matter how a solar panel is made, typically range from 65 inches by 39 inches, with variations in size depending on the ???



Solar panels generate clean energy and significant savings, but they aren't a one-size-fits-all solution. The size and weight of solar panels vary depending on the make and model, with most residential panels measuring about 5.5 feet ???

570 WHAT IS THE LENGTH AND WIDTH OF THE PHOTOVOLTAIC PANEL



Solar panel dimensions is an essential criterion to consider when planning a photovoltaic solar installation. So, how big is a solar panel? a 300w monocrystalline or polycrystalline solar panel typically has a length of around 1.6 meters and a width of 1 meter. However, these dimensions may vary slightly depending on the manufacturer and



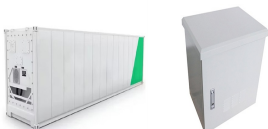
Solar panel size affects energy production and installation space. Explore standard sizes and find the perfect fit for your solar project. Following hydropower and wind energy, solar power has become the third-largest contributor to Solar panel sizes: For 60 cells: Width: 95-110 centimeters (3.1 - 3.6 feet)



Loom Solar has Introduced - Shark Bifacial 575-575W Super high-efficiency Bifacial technology Solar module. It is the latest technology solar panel in India that works in low light and even in cloudy weather. Buy online Shark Bifacial 575W watt panel with perc technology at loom solar in Rs. 26,000. promised delivery within 3 days.

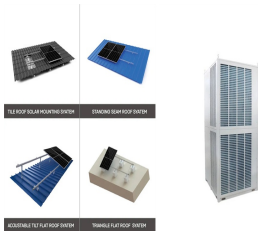


Divide your daily kWh by the number of peak hours. Take the result (#kW) and multiply it by 1.3. This is the increase in the size of PV systems by 30%. The result will be the actual size PV system for your home, measured in kW. Quantity From here, you'll need to determine how many solar panels you'll need to achieve the size you need.



The physical size of the solar panel is measured by the length, width, and height (thickness) of the individual panel (including the frame). There are a variety of different solar panel dimensions and solar panel sizes in the ???

570 WHAT IS THE LENGTH AND WIDTH OF THE PHOTOVOLTAIC PANEL



The solar panel dimensions are measured through height x width in metres or centimetres, the industry-standard panel size was 156mm x 156mm or 6-inch square cell format. The new panel sizes, up to 2.4m long and 1.3m broad, are based on the larger 180 and 210mm wafer (based silicon cells are fabricated from slices of either single-crystal or



Domestic solar panels are usually 1.7 metres in length, 1 metre in width and 3-5cm in thickness. The weight of domestic solar panels is typically between 18kg and 20kg. What are common PV panel sizes? There are two common types of standard solar panels: 60-cell and 72-cell. Solar power isn't just a cool way to make your house look



Solar Panel Wire Size (Cable Gauge + Calculations Chart) September 8, 2023 September 12, 2022 by Elliot Bailey. and PV technology becomes more widely used. The cost of wiring with the best quality cables of the specified gauge will not be the major cost contributor to your installation.



Source: Mission Solar Energy Usually, residential rooftop solar panels are approximately 65 inches tall, 40 inches wide, and 2 inches thick. In feet, that would be 5.4 ft. by 3.3 ft.. Commercial solar modules are usually slightly larger in length and width only.. However, with greater technological innovations in recent years, there is no longer a clear cut distinction ???



The size of a photovoltaic solar panel varies depending on the purpose the panel was designed for. Solar PV panels designed for use on domestic residential properties vary in size with length measurements of between 1000 - 2000mm ???

570 WHAT IS THE LENGTH AND WIDTH OF THE PHOTOVOLTAIC PANEL



1. Solar Panel PV Wire. It is a well-known solar power wire that is used for connecting cabling in photovoltaic installations. The XLPE cable insulation provides remarkable resistance to ozone, ultraviolet radiation, and moisture, making them highly durable cable appropriate for both grounded and ungrounded solar energy systems. 2. USE-2 Wire



Solar power systems that are not grounded can also damage any appliances or devices connected to the system. Therefore, you must ground solar with the right wire sizes. Article 690 of the NEC mandates that #8 AWG or #6 AWG are the smallest wires that can be used with grid tied solar panels and inverter systems, and for solar panel output circuits, #10 or #12 AWG are ???



When considering solar panel dimensions, weight can vary based on their solar panel size and type. For residential installations in the UK, panels generally weigh between 18-21 kg each. ???

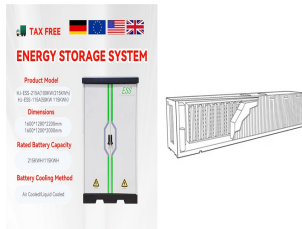


The amount of solar cells that a panel has determines the size, the most common panel sizes are 60-cell and 72-cell. Because 72-cell panels hold more cells, they are bigger and can produce more solar power, making them popular for commercial installations. 72-cell panel wattage usually sits around 415 to 450 watts, but they can get into the



Solar Panel FAQs. What is the typical size of a solar panel? There are three solar panel sizes, including 60-cell, 72-cell, and 96-cell solar panels. How much do solar panels weigh? The weight of the panel, depending on the solar cell structure, materials, and required mounting accessories, can be between 40 and 60 pounds.

570 WHAT IS THE LENGTH AND WIDTH OF THE PHOTOVOLTAIC PANEL

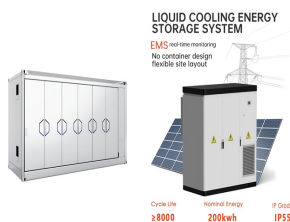


To find the solar panel output, use the following solar power formula:
$$\text{output} = \text{solar panel kilowatts} \times \text{environmental factor} \times \text{solar hours per day}$$

The output will be given in kWh, and, in practice, it will depend on how sunny it is since the number of solar hours per day is just an average.



Step 2: Calculate the Wattage of the Solar Panel Array. The size, or Wattage, of your solar panel array depends not only on your energy needs but also on the amount of sunlight that's available in your location, Off-Grid Solar Power Inverter 12V to 110V with Built-in 5V/2.1A USB / Hardwire Port,



Factors Determining the Maximum Solar System Size Roof Space Availability. Roof space plays a significant role in determining the maximum solar system size. A 4kW system usually requires around 26 square ???