

620W PHOTOVOLTAIC PANEL WEIGHT



What is a 620w bifacial solar panel? Discover the JA Solar Deep blue4 n-type 620W Bifacial Solar Panel JAM78D40-620/MB, a cutting-edge solar panel that harnesses sunlight from both sides, offering increased energy yield and enhanced durability.



What is a Jinko 620w Neo n-type mono facial solar panel? The Jinko 620W NEO N-Type Mono Facial solar panel is a 620W monocrystalline module with 156 cells from Jinko Solar, one of the world's leading manufacturers of the photovoltaic industry. Jinko solar panels come with a 15-year product warranty and a 30-year linear power warranty. Nominal Max. Power (Pmax): 620W



What is a bifacial solar panel? Introducing the JA Solar DeepBlue4 N-Type 620W Bifacial Solar Panel. With its high efficiency and durability, this monocrystalline silicon panel delivers power output up to 620W. Its bifacial design captures sunlight from both sides, maximizing energy production.

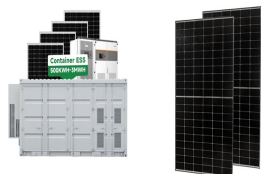


How much power does a monocrystalline solar panel produce? With its high efficiency and durability, this monocrystalline silicon panel delivers power output up to 620W. Its bifacial design captures sunlight from both sides, maximizing energy production. With double glass for added durability, it's a reliable choice for solar energy solutions.



The weight of a solar panel per unit is an important consideration when deciding which size is best for your home, which we will discuss further in a later section. Kilograms per Square Meter 100-watt solar panels that are 8.53 kilograms and measure 1.19 meters long by 0.16 meters wide have an area of 0.65 square meters.

620W PHOTOVOLTAIC PANEL WEIGHT



Weight: 78.0 lbs: Length: 96.9 in in: Width: 44.6 in: Height: 1.38 in +12.7%
The QCELLS Q.TRON XL-G2.3/BFG 620W N-Type Bifacial Solar Module is a high-performance solar panel designed for commercial, industrial, and utility-scale applications. quantity discounts and expert reviews for the QCELLS Q.TRON XL-G2.3/BFG 620W solar panel



JA solar panel solar 540w 545W 590W 600W 610W 615W 620W 625W 630W 635W N-Type Solar Panel MBB photovoltaic Panels (2 Reviews)
607 sold #2Most popular in Solar Application:Solar power system;Type:144cell solar panel;Weight:28.6kg;Junction Box:IP 68, 3 Diodes;Solar cell:MBB PERC 158.75mm;Connector:QC 4.10 (1000V), QC 4.10-35 ???



Astronergy 620W N-Type Topcon Solar Panel. Astronergy's N-Type Topcon technology monocrystalline photovoltaic module with a maximum efficiency of 22.9%. This solar panel has a positive power tolerance of 0/3% which ensures energy production throughout its lifetime. - Weight: 34.7 kg - Number of cells: 156; Power (W) 600 - 650 Height (cm



The best residential solar panels you can buy in 2024 1. SunPower Maxeon 6 AC: The best solar panels for UK homes. Price when reviewed: From around ?350 exc. installation (per panel) | Find out more at ???



Introducing the JA Solar DeepBlue4 N-Type 620W Bifacial Solar Panel. With its high efficiency and durability, this monocrystalline silicon panel delivers power output up to 620W. Its bifacial design captures sunlight from both sides, ???

620W PHOTOVOLTAIC PANEL WEIGHT



The AIKO 625W Efficiency 23.7% N-Type ABC, 72 Cell, Silver Frame MC4-EVO-2 (AIKO-A625-MAH72Mw) solar panel is a 625W monocrystalline module with 72 Half-Cell technology and 11Bus-bar half-cell configuration, which can reach up to an incredible power of 625Wp. The frame thickness for this module has been improved from 35mm to 30mm.



Solar Panel Lifter ; Solar Street Light . Solar Flood Light; Solar Traffic Signs; Solar Water Pump ; Solar Panel > Module by watt > 620. 620 Watt Solar panels" range of prices, dimensions, sizes, voltage output, specifications datasheets Weight: 30.5KG ~ 35.5KG



Ultra high power up to 620W The medium-format n -type series modules adopt 210R rectangular silicon wafer design. 210R technology not only breaks through the conventional medium-sized module power output bottleneck of 600W but ???



Multimercentes Ltda. Solar Panel Series M?dulo Fotovoltaico 620W. Detailed profile including pictures, certification details and manufacturer PDF Solar Panel VDS Renewable - VDS-108/M10H 390-410W Weight 31.5 kg Cell ???



Longi Lr7-72hgd 585W~ 620W Photovoltaic Solar Monofacial Panels, Find Details and Price about Photovoltaic Solar Panels Longi Solar 585W from Longi Lr7-72hgd 585W~ 620W Photovoltaic Solar Monofacial Panels - Sanjuli International Trade (Gansu) Co., Ltd. Weight. 33.5. Solar Cell. Mono 182 Cell. Type. Perc, Half Cell, Bifacial, Double-Glass

620W PHOTOVOLTAIC PANEL WEIGHT



Welcome to the world's most advanced solar panel (solar module) product directory. Solar installers, system integrators, and sellers can use our advanced technical filters to find the exact PV panels that match their needs. Weight: 26.5 kg Region: China Panel Dimension (H/W/D): 2278x1133x30 mm This series is specifically designed for



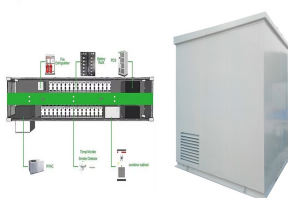
Explore the REC Alpha Pro M Series 630W solar panel. Advanced HJT technology, 22.2% efficiency, and comprehensive warranty for superior commercial solar performance. Get a Quote today from Solar Electric Supply.



23.5% Efficiency from this Aiko 620W Solar Panel. Make significant savings by using this high wattage Solar Panel. By reducing the number of panels in the array savings can be made on mounting structure, cabling, and labour time/costs. Product Warranty: 15 Years. Performance Warranty: 30 Years. Technical Specifications. Rating: 620W; Efficiency



JinkoSolar unveils details of its TopCon 620 W bifacial solar panel. The Tiger Neo panel has a power conversion efficiency of up to 22.1% and a temperature coefficient is -0.30% per Celsius degree. half-cut cells, and has a power output ranging from 590 to 620 W. It measures 2465x1134x30mm and has a weight of 34.8 kg. Its power conversion



Mysolar has the world-leading team in HJT and shingled solar panel R& D as well as manufacturing, with over 10 years of experience in research and massive production high power modules, to create a high-performance(up to 720W) ???



The Jinko 620W NEO N-Type Mono Facial solar panel is a 620W monocrystalline module with 156 cells from Jinko Solar, one of the world's leading manufacturers of the photovoltaic industry. Weight: 30.6 kg (67.46 lbs) Front Glass: 3.2, Anti-Reflection Coating, High Transmission, Low

620W PHOTOVOLTAIC PANEL WEIGHT

Iron, Tempered Glass; Frame: Anodized Aluminium Alloy;

620W PHOTOVOLTAIC PANEL WEIGHT



Sunpal's robust N-Type TOPCon monofacial 610W 620W 630W 640W solar modules panels deliver higher efficiency and power to meet your residential or commercial needs. 182mm TOPCon 520W 530W 540W Photovoltaic Panels Manufacturer. 510-540W Max Eff: 22.74 Weight: 30.0kg: Junction Box: Ip68 rated (3 bypass diodes) Packaging: 36pcs/pallet



Jinko Solar Panel Topcon Bifacial Double Glass JKM-N-72HL4RBDV 575W 580W 585W. The Jinko JKM-N-72HL4RBDV solar panel is a high-efficiency photovoltaic module produced by JinkoSolar, one of the leading solar energy companies in the industry. This panel is designed for optimal performance and reliability in various solar installations.



Leapton Energy Co. Ltd. (Leapton Solar) Solar Panel Series LP182*182-M-78-NH 610-620W. Detailed profile including pictures, certification details and manufacturer PDF ENF Solar. Weight 29 kg Cell Number



Built for delivering high power in a ground-mounted solar panel system, this AIKO STELLAR 1N+ provides 620W of power with an excellent efficiency of 23%. The 144 n-type ABC cells are ???

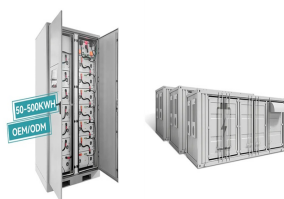


AIKO-A-MAH72MB N-Type ABC White Hole Series Solar Panel 625W. Description AIKO-A-MAH72MW N-Type ABC White Hole Series Photovoltaic Solar Panel 625W Bezel-less Front? 1/2 ?High Energy Yield. Weight: 28.2kg; ???

620W PHOTOVOLTAIC PANEL WEIGHT



The efficiency of the solar panel HJT Giwa5 series is up to 23.50% in serial production. When we add in addition double-sided heterojunction cells with high bifaciality at a level up to 85%, we will achieve a perfect and powerful solar panel. 120 Cell 620W up to 640W. and. 132 Cell 700W up to 730W. Construction of QW Solar panels. QWsolar



HJT Half Cell 615W 620W 625W 630W 635W Photovoltaic Solar Panel Module. Max. Efficiency: 22.4% Number of Cells: 120(6*20) Dimensions : 2172x1303x35mm Weight: 34.8kg Front Side Glass: High transparency solar glass 2.0mm Back Side Glass: High transparency solar glass 2.0mm Frame: Silver / Black, anodized aluminium alloy



The Jinko 620W NEO N-Type Mono Facial solar panel is a 620W monocrystalline module with 156 cells from Jinko Solar, one of the world's leading manufacturers of the photovoltaic industry. Jinko solar panels come with a 15-year product warranty and a 30-year linear power warranty. Weight: 30.6 kg: Dimensions: 2465 x 1134 x 35 cm: Reviews



The Jinko 620W NEO N-Type Mono Facial solar panel is a 620W monocrystalline module with 156 cells from Jinko Solar, one of the world's leading manufacturers of the photovoltaic industry. Jinko solar panels come with a 12-year product ???



The Jinko 560W Tiger Pro Mono Facial solar panel is a 560W monocrystalline module with 144 cells from Jinko Solar, one of the world's leading manufacturers of the photovoltaic industry. Jinko solar panels come with a massive 12-year product warranty and a 30-year linear power warranty. Multi Busbar Technology Better light trapping and current collection to improve module power ???