

ABB CIRCUIT BREAKER WILL CLOSE AUTOMATICALLY AFTER STORING ENERGY



Can ABB help if a circuit breaker is damaged? However, ABB will lend assistance if notified of claims. Use care in unpacking to avoid damaging any circuit breaker parts. Unpack circuit breakers as soon as possible after receipt. If unpacking is delayed, difficulty may be experienced in making a claim for damages not evident upon receipt.



Is ABB responsible for damage after delivery? ABB is not responsible for damage of goods after delivery to the carrier. However, ABB will lend assistance if notified of claims. Use care in unpacking to avoid damaging any circuit breaker parts. Unpack circuit breakers as soon as possible after receipt.



Who certifies ABB circuit breaker? The independent certifying Body is RINA S.p.A. ABB obtained its first certification with three-year validity in 1990, and has now reached its fourth reconfirmation. The new Tmax series has a hologram on the front, obtained using special anti-imitation techniques, which guarantees the quality and that the circuit breaker is an original ABB product.



How does a contact breaker work? The contact is also operated by the key lock device (if provided) = Contact operated by the cam of the motor operating mechanism: it opens after closing of contact KO and it closes when the circuit breaker is in open position (it does not switch when the circuit breaker is in tripped position S75I/15)



Are ABB molded case circuit breakers UL certified? Fixed ABB molded case circuit breakers, in accordance with UL/CSA standards up to 2500 A, are available in the two-pole, three-pole and four-pole version up to 1200 A and only in the three-pole version from 1600 A up to 2500 A. The circuit breakers have: UL file: E116595 for MCS; CSA file: LR54280.

ABB CIRCUIT BREAKER WILL CLOSE AUTOMATICALLY AFTER STORING ENERGY



Can a circuit breaker work on a closed breaker? DO NOT work on a closed breaker. DO NOT work on a breaker with a charged closing spring. DO NOT use a circuit breaker by itself as the sole means of isolating a high voltage circuit. DO NOT leave a breaker in an intermediate position in a cell. Always place the breaker in the disconnect, test or connected position.



This release of energy causes the circuit breaker to either open or close, depending on the specific operation required. It's important to note that circuit breakers typically feature two springs: one for closing the circuit breaker ???



The VD4 switch uses the cooperation between the energy storage locking plate on the energy storage connecting rod (mentioned above) and the extension plate of the closing sector plate to realize the closing lock in the ???



ABB has developed a revolutionary solid-state circuit breaker concept, which meets the highest demands of next-generation power applications as they enter the digital age. The ground-breaking low voltage circuit breaker concept will ???

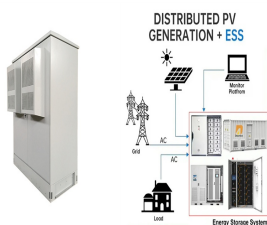


The energy required to trip or open the circuit breaker is provided by the tripping spring, while the energy required to close the circuit breaker is supplied by the closing spring. When the main closing spring has been fully ???

ABB CIRCUIT BREAKER WILL CLOSE AUTOMATICALLY AFTER STORING ENERGY



Renewable energy sources, such as solar or wind, call for more flexible energy systems to ensure that variable sources are integrated in an efficient and reliable way. Energy storage systems, and in particular batteries, are emerging as one ???



With a frame size being able to handle up to 2500A and operation up to 1250V DC, SACE Infinitus functions as a circuit breaker, contactor, isolator and energy meter, and offers a wide range of communication options. This all-in-one ???



Once a fault is detected, the MCB automatically switches off the electrical circuit to prevent damage to wires and to avoid the risk of fire. MCBs are equipped with two tripping mechanisms: the delayed thermal tripping mechanism for ???



Outdoor NEMA 3R Enclosed Circuit Breakers range from 100A to 200A (100A, 125A, 150A, and 200) and AIC rating of 10 or 22 KAIC. ABB's shares are listed on the SIX Swiss Exchange (ABBN) and Nasdaq Stockholm ???



1/4 Emax 2 Formula AIR , Formula Formula ATM , Tmax T Tmax XT , , ???