

ABB VACUUM CIRCUIT BREAKER INTERNAL ENERGY STORAGE ELECTRICAL EQUIPMENT



What type of vacuum breaker does ABB offer? ABB offers a new 38 kV class medium voltage vacuum circuit breaker with spring mechanism type EL and new vacuum interrupter technology.



What is a vacuum circuit breaker? 33 53537 01. Summary 1.1 General The vacuum circuit breakers of type VM1 are intended for indoor installation in air-insulated switchgear. Within the limits of their technical data, they have a switching capacity which is sufficient to withstand the loads occurring during the switching on and off of equipment and switchgear components under n



What type of circuit breaker is suitable for auto-closing? In number of short-circuit breaking operations are expected. Type VD4 vacuum circuit-breakers are suitable for autoreclosing, and ng AC 1 kV VDE 0105, operation of electrical installations DIN VDE 0141, earthing systems for special power installations with rated voltages over 1 kV Accident prevention regulations issued by the



Are vacuum circuit breakers suitable for auto-reclosing operations? have to be reckoned with. Vacuum circuit breakers of type VM1 are prepared for auto-reclosing operations and are notable for their especially high operational reliability and extremely long service life with complet



When should ABB service personnel be called in? ed personnel, observing all the relevant safety regulations. It is recommended that ABB after-sales service personnel should be called in, t least during the performance of servicing and repair work. While the work is in progress, all auxiliary voltage sources must also be disconnected and secured to prev

ABB VACUUM CIRCUIT BREAKER INTERNAL ENERGY STORAGE ELECTRICAL EQUIPMENT



How to test VM1 circuit breaker? the VM1 circuit breaker. Earth all poles of the VM1 circuit breaker on one side. Connect the earthed test lead of the VIDAR vacuum tester conductively to the station earth. Connect the high voltage test lead of the VIDAR vacuum tester with phase L1 of the unearthed pole side and test the vacuum interrupter chamber with the circuit



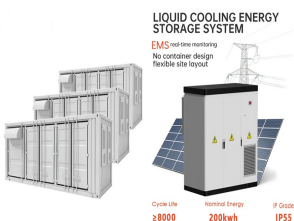
ABB Electrification Service offers a Preventive Maintenance Program for ABB Low and Medium voltage equipment (switchboards, circuit breakers and relays) with the aim to anticipate the failures and reduce the deterioration of the ???



ABB offers its new 38 kV class medium voltage vacuum circuit breaker with spring mechanism type EL (used in products like Emax 2 and VD4) and new vacuum interrupter technology up to 40.5 kV, 3000A, 40 kA, 190 kV ???



VD4ABB, ABB ??? PT ???



The new ABB breaker will also improve safety and protection for people and equipment. As there is no energy release when the current is interrupted, there is no risk of arc energy exposure. Grid-edge electrical ???