

# ABOUT SOLAR POWER STATION



The operation of a solar photovoltaic plant is based on photons and light energy from the sun's rays. The types of solar panels used in these types of facilities are also different. While solar thermal plants use collectors, photovoltaic power ???



The 40.5 MW J?nnersdorf Solar Park in Prignitz, Germany. A photovoltaic power station, also known as a solar park, solar farm, or solar power plant, is a large-scale grid-connected photovoltaic power system (PV system) designed for the supply of merchant power. They are different from most building-mounted and other decentralized solar power because they supply ???



The solar power plant can use power from the grid when needed or send its extra power back. Smart Metering and Net Metering. Solar power plants use smart metering to keep track of power use. These meters see how much ???



POWER STATION is a "show and do" project building a solar POWER STATION across the rooftops (streets, schools, community buildings) of North East London via enacting a grassroots Green New Deal - working with art and infrastructure ???



A POWER STATION solar off the grid power plant can save thousands of dollars in connection fees and ongoing monthly power bills. ENQUIRE NOW. Clean & Sustainable. The solar energy collected from your property is 100% renewable and sustainable. It's ???

# ABOUT SOLAR POWER STATION



"A solar power plant is based on converting sunlight into electricity, either directly using photovoltaic or indirectly using concentrated solar power. Concentrated solar power systems use lenses and tracking systems to ???



Solar panels do not produce any carbon dioxide emissions when converting solar power into electricity. Solar power can be used to create electricity in remote places where it might be very hard to get electricity through the National Grid. But solar power also relies on us! To fully benefit from any solar or insulation installation, we need to



Components of Solar Power Plant: Inverters and Their Functionality. Inverters link solar panels to the grid, turning sunlight into usable power. From simple devices in the 1800s to today's complex units, they've evolved greatly. Now, modern inverters help solar systems feed power more efficiently into the power grid.



In the UK, we achieved our highest ever solar power generation at 10.971GW on 20 April 2023 ??? enough to power over 4000 households in Great Britain for an entire year. 2 and 3 . Do solar panels stop working if the weather gets too hot?



The solar power plant model is becoming increasingly popular for generating electricity without producing carbon emissions and causing environmental harm. As more and more people become aware of the benefits of solar panel plant, it is becoming an accepted alternative to traditional electricity sources. We can step towards clean, renewable energy and ???

# ABOUT SOLAR POWER STATION

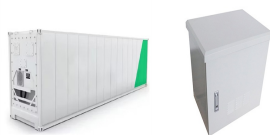
---



"A solar power plant is based on converting sunlight into electricity, either directly using photovoltaic or indirectly using concentrated solar power. Concentrated solar power systems use lenses and tracking systems to focus a broad area of sunlight in a small beam". Solar power is the cleanest, most reliable form of renewable energy



A solar power plant is based on the conversion of sunlight into electricity, either directly using photovoltaics (PV), or indirectly using concentrated solar power (CSP). Concentrated solar power systems use lenses, mirrors, and tracking systems to focus a ???



How solar is used . Solar energy is a very flexible energy technology: it can be built as distributed generation (located at or near the point of use) or as a central-station, utility-scale solar power plant (similar to traditional power plants). Both ???



13. Solar collectors capture and concentrate sunlight to heat a synthetic oil called terminal, which then heats water to create steam. The steam is piped to an onsite turbine-generator to produce electricity, which is then transmitted over power lines. On cloudy days, the plant has a supplementary natural gas boiler. The plant can burn natural gas to heat the water, ???



A solar power station, also known as a solar farm or solar park, is a large-scale facility that harnesses solar energy to generate electricity. It consists of multiple solar panels or mirrors that capture sunlight and convert it into usable energy.

# ABOUT SOLAR POWER STATION



Components of A 1 MW Solar Power Plant Solar Panels: The primary component of a 1 MW solar power plant is the solar panels, also known as photovoltaic (PV) panels. These panels are made up of multiple solar cells, typically composed of silicon. That converts sunlight into direct current (DC) electricity through the photovoltaic effect.



A solar photovoltaic power plant is a regular power plant that converts solar energy into electricity through the photovoltaic effect. This effect occurs when sunlight photons bump into a specific material and displace an ???



A typical Anker portable power station can come with an impressive 2048Wh???that's way larger than any power bank can offer. Recharging Options. Power stations usually have more options to generate electricity, from hydroelectric power stations to portable power stations with solar panels for wider applications.



Best high-capacity portable power station. The Anker Solix F3800 is an impressive power station with a 3840Wh battery capacity. It might be pushing the definition of "portable" a bit far - it's a



A solar power plant is an arrangement of various solar components including solar panel to absorb and convert sunlight into electricity, a solar inverter to convert the electricity from DC to AC while also monitoring the system, solar ???



A concentrated solar power plant is a large-scale CSP system that uses mirrors or lenses to concentrate sunlight onto a receiver that heats a fluid that drives a turbine or engine to generate electricity. A concentrated solar power plant consists of several components, such as:

# ABOUT SOLAR POWER STATION

---



A power station, also referred to as a power plant and sometimes generating station or generating plant, is an industrial facility for the generation of electric power. Power stations are generally connected to an electrical grid.. Many power stations contain one or more generators, rotating machine that converts mechanical power into three-phase electric power.



VTOMAN Jump 600X Portable Power Station 600W - 299Wh Solar Generator LiFePO4 Battery Power Station with 600W Pure Sine Wave (Surge 1200W) AC Outlet, PD 60W USB-C, 3x Regulated 12V/10A DC for Camping. 4.5 out of 5 stars 264. 200+ bought in past month.



Related Post: Do Solar Generators Come With Solar Panels? A portable power station, also known as a solar generator is a portable box with three main components. The first component is the battery, the second ???