

ACTIVE ENERGY STORAGE POWER STATION



What is a large-scale energy storage power station? The large-scale energy storage power station is composed of thousands of single batteries in series and parallel, and the power distribution of each battery pack is the key to the coordinated control of the entire station.



What can pumped-storage power stations do? In the special areas where new energy sources are concentrated, the open space of pumped-storage power stations can be used to build solar energy and wind energy storage systems, and new energy sources can be connected and coupled in pumped-storage power stations to build a new generation of pumped-storage stations.



What is a battery energy storage system? The battery energy storage system is used to compensate for the power shortage of thermal units in the first 5 seconds to achieve the purpose of regulating the frequency stability of the grid system.



Can a battery energy storage station be used for power compensation? The output power of conventional thermal power units has a hysteresis. Hence, the power of the battery energy storage station can be used for power compensation in the initial stage of system power shortage.



Can energy storage power stations be adapted to new energy sources? Through the incorporation of various aforementioned perspectives, the proposed system can be appropriately adapted to new power systems for a myriad of new energy sources in the future. Table 2. Comparative analysis of energy storage power stations with different structural types. storage mechanism; ensures privacy protection.

ACTIVE ENERGY STORAGE POWER STATION



What time does the energy storage power station operate? During the three time periods of 03:00???08:00,15:00???17:00,and 21:00???24:00,the loads are supplied by the renewable energy,and the excess renewable energy is stored in the FESPS or/and transferred to the other buses. Table 1. Energy storage power station.



As energy storage power stations are widely integrated to grid, they pose larger influence on clean energy. It occurs that voltage/reactive power characteristic of energy storage plant and clean energy plant becomes complicated to control and analyze. For the sake of studying the energy storage system and clean energy plant's voltage/reactive



With the continuous interconnection of large-scale new energy sources, distributed energy storage stations have developed rapidly. Aiming at the planning problems of distributed energy storage stations accessing distribution networks, a multi-objective optimization method for the location and capacity of distributed energy storage stations is proposed.



MW Dalian Flow Battery Energy Storage Peak-shaving Power Station, with the largest power and capacity in the world so far, was connected to the grid in Dalian, China, on September 29, and it will be put into operation in mid-October.This energy storage project is supported technically by Prof. LI Xianfeng's group from the Dalian Institute of Chemical Physics (DICP) of ???



Download Citation | On Nov 1, 2019, Yuchen Hao and others published Active Reactive Power Control Strategy Based on Electrochemical Energy Storage Power Station | Find, read and cite all the

ACTIVE ENERGY STORAGE POWER STATION



Building upon the analysis of the role of configuration of energy storage on the new energy side, this paper proposes an operational mode for active peak regulation "photovoltaic + energy storage" power stations, which can conduct active peak shaving and valley filling based on the characteristics of the grid load.



Most power stations in South Africa are owned and operated by the state owned enterprise, Eskom. Concentrated solar power uses molten salt energy storage in a tower or trough configurations. The South African Department of Energy allocated 150 MW of concentrated solar power (CSP) capacity in the Renewable Energy Independent Power Producer



A battery energy storage system (BESS) or battery storage power station is a type of energy storage technology that uses a group of batteries to store electrical energy. They are often installed at, or close to, other active or disused power stations and may share the same grid connection to reduce costs. Since battery storage plants



The active power control of the photovoltaic plant in Mineir?o stadium, as many others, consists of injecting all the available watts into the grid since it is a commercial plant. Figure 5 shows the active power generation of PVS in a typical sunny day gathered through the field measurement data. presenting a peak generation of about 1 MW

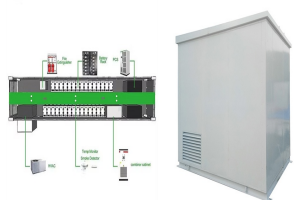


Abstract: In view of the fact that the active safety early warning system products of large-scale battery energy storage systems cannot truly realize the fire protection and controllability of the energy storage system at this stage, this paper analyzes the characteristics of the thermal runaway process characteristics of the lithium-ion batteries that constitute the large-scale ???

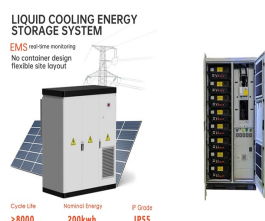
ACTIVE ENERGY STORAGE POWER STATION



Flow diagram of a CHP plant: a) Energy, b) Exergy. Flow diagram of integrated system with 20% steam from boiler and 80% steam from Molten salt storage: c) Energy, d) Exergy. Download: Download high-res image (578KB) Download: Download full-size image; Fig. 6. The hourly power production by source in Sweden, for the year 2017.



With the advancement of smart grids, energy storage power stations in power systems is becoming more and more important, especially in the development and utilization on generation side. Huiting X U 2017 Optimal planning of battery energy storage considering reliability benefit and operation strategy in active distribution system[J]



Moreover, a coupled PV-energy storage-charging station (PV-ES-CS) is a key development target for energy in the future that can effectively combine the advantages of photovoltaic, energy storage and electric vehicle charging piles, and make full use of them . The photovoltaic and energy storage systems in the station are DC power sources, which



Building upon the analysis of the role of configuration of energy storage on the new energy side, this paper proposes an operational mode for active peak regulation "photovoltaic + energy ???



The total active power that can be added by the battery energy storage station is P_E ; the active power of the battery energy storage station which is distributed by the control center of the battery energy storage station ???

ACTIVE ENERGY STORAGE POWER STATION



Abstract: This paper studies voltage/reactive power coordination control between energy storage system and clean energy plant connected to AC/DC hybrid system. As energy storage power ???



The output active power and frequency curve of energy storage with the gradual increase of inertia is shown in Fig. 5(a) and (b). (b) The inertia is constant, and the damping are 20, 50, and 60 respectively. The output active power of energy storage and the frequency curve when the inertia gradually increases which is given in Fig. 6(a) and (b)



The service fee paid by the distribution network for energy storage power station services was set at CNY 0.05/(kW h). The charging and discharging efficiencies of the energy storage power station were 0.95, with an operating range for stored energy between 10% and 90%, and an initial stored energy of 20%.



On January 21, 2020, Ontario's Independent Electric System Operator (IESO) called a test Demand Response event. Peak Power responded to this call with a virtual power plant consisting of a group of four 500kW batteries, twelve 30kW electric vehicles (vehicle-to-grid), and load reductions in eight different commercial buildings in downtown Toronto.

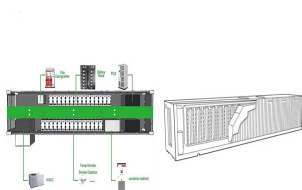


This article provides a comprehensive guide on battery storage power station (also known as energy storage power stations). These facilities play a crucial role in modern power grids by storing electrical energy for later use. The guide covers the construction, operation, management, and functionalities of these power stations, including their contribution to grid stability, peak ???

ACTIVE ENERGY STORAGE POWER STATION



Aiming at reducing the risks and improving shortcomings of battery relaytemperature protection and battery balancing level for energy storage power stations, a new high-reliability adaptive equalization battery management technology is proposed, which combines the advantages of active equalization and passive equalization. Firstly, the current common technical solutions ???



The later permits to use the BESS not only for energy and active power service but also to help the grid to stay stable and to increase the power quality in the presence of renewable generations. The experimental activities performed also deal with a special load that is an EV fast charging station included in the Micro-Grid: the survey has



The participation strategy of the energy storage power plant in the energy arbitrage and frequency regulation service market is depicted in Fig. 15, while the SOC curve of the energy storage power plant is presented in Fig. 16. Upon analyzing the aforementioned scenarios, it is evident that the BESS can generate revenue in both markets.

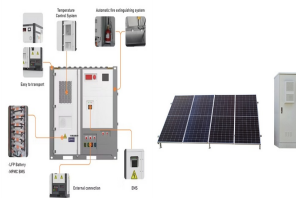


With the enhancement of environmental awareness, China has put forward new carbon peak and carbon neutrality targets. Electric vehicles can effectively reduce carbon emissions in the use stage, and some retired power batteries can also be used in echelon, so as to replace the production and use of new batteries. How to calculate the reduction of carbon ???



Reasonable capacity configuration of wind farm, photovoltaic power station and energy storage system is the premise to ensure the economy of wind-photovoltaic-storage hybrid power system. We propose a unique energy storage way that combines the wind, solar and gravity energy storage together. And we establish an optimal capacity configuration

ACTIVE ENERGY STORAGE POWER STATION



VSPSU is a good countermeasure in dealing with the intermittency of variable renewable energy, such as wind power and solar power. Solving active power The interaction effect of hydraulic transient conditions of two parallel pump-turbine units in a pumped-storage power plant with considering "S-shaped" instability region: Numerical



The Zhangbei energy storage power station is the largest multi-type electrochemical energy storage station in China so far. The topology of the 16 MW/71 MWh BESS in the first stage of the Zhangbei national demonstration project is shown in Fig. 1. As can be seen, the wind/PV/BESS hybrid power generation system consists of a 100 MW wind farm, a 40 MW ???



Electrochemical energy storage stations (EESSs) have been demonstrated as a promising solution to mitigate power imbalances by participating in peak shaving, load frequency control (LFC), etc. This paper mainly analyzes the effectiveness and advantages of control strategies for eight EESSs with a total capacity of 101 MW/202 MWh in the automatic ???

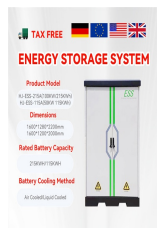


-Charging power station-Fuel pump-Gasoline-Hydrogen fuel. Energy supply capacity-Limited by battery This battery can supply high rated capacity than other types of batteries (up to 244.8 MWh). So, it is built for high power energy storage applications [86]. CAES can control both active and reactive power and the SOC. Also, PHES has the



There is an energy storage power station with active and reactive power conversion devices in each area, numbered 4, 18, and 28 respectively. In different scenarios, the energy storage power stations are aggregated in three areas according to the regulation index and geographical location. Considering the great difference in the control ability

ACTIVE ENERGY STORAGE POWER STATION



The operation of the electricity network has grown more complex due to the increased adoption of renewable energy resources, such as wind and solar power. Using energy storage technology can improve the stability and quality of the power grid. One such technology is flywheel energy storage systems (FESSs). Compared with other energy storage systems, ???



With the innovation of battery technology, large-capacity centralized energy storage power stations continue to be used as power sources to provide energy support for the grid [5 ??? 7], which are included in the grid-connected operation and auxiliary service management. Li et al. [8, 9] concluded that the main functions of the energy storage power ???



The pumped storage power station has the characteristics of frequency-phase modulation, energy saving, and economy, and has great development prospects and application value. In order to cope with the large-scale integration and intermittency of renewable energy and improve the ability of pumped storage units to participate in power grid frequency modulation, ???