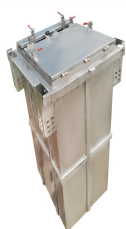


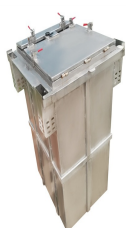
# ADVANCED POWER PLANT SOLUTIONS BOTSWANA



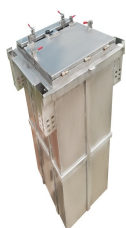
Who is advanced powerplant solutions? Welcome to the Advanced Powerplant Solutions (APS) website. Our mission is to help our customers enjoy the sport of flying by providing parts and services to Ultralight, Light Sport Aircraft and Experimental Aircraft Owners at competitive prices in a fast, efficient and professional manner.



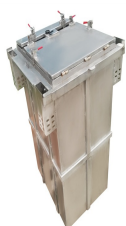
Who is Advanced Power Solutions? Advanced Power Solutions (APS) is a leading producer of premium quality batteries, with production site located in Poland: Gniezno. Our mission is to provide easy, safe, and sustainable mobile energy solutions. We aim to create a powerhouse of brands that improve consumers' daily lives, all while ensuring environmentally responsible production.



Who makes Advanced Power Solutions batteries 2021? aps 2021 Advanced Power Solutions (aps), founded in 1970, is a producer of premium-quality batteries. Its plant in Gniezno/Poland has been known for producing alkaline batteries, starting with Zinc/Carbon batteries as part of Panasonic Batteries Europe.



Will advanced powerplant solutions provide Rotax engine training classes in 2024? Advanced Powerplant Solutions will not be providing Rotax engine training classes in the Spring of 2024. The next opportunity will likely be in the fall of 2024. Please see for a complete list of training facilities, classes and dates.



Advanced Power Solutions Are Helping Customers Reduce Emissions. October 27, 2022. The company's patented processes can be applied to engines and turbines at oil and gas sites, distributed power and industrial plants and waste-to-energy sites. Caterpillar plans to offer these technologies for deployment on our Cat engines and Solar gas

# ADVANCED POWER PLANT SOLUTIONS BOTSWANA



Solutions, is an advanced process control product that significantly improves power plant efficiency and reduces plant emissions. AES provides combustion control in boilers; coordinates multiple boilers, turbines, and heat recovery systems for optimal operation of entire power plants; and provides dynamic balancing of power production to demand.



Four bidders shortlisted for 200 MW concentrated solar power plant in Botswana Updated? 1/4 ?2022-11-28 12:11 Source? 1/4 ?helioscsp The plant, which will use lenses or mirrors to focus a large area of sunlight onto a receiver, is due to be operational by 2027 and is the flagship renewable project in government's Integrated Resources Plan (IRP) for energy ???



Jindal Energy, a dynamic subsidiary of Jindal Power Limited (JPL), is leading a transformative initiative in Botswana, driven by an ambitious vision to establish a robust Base Load Thermal Power Plant. This project will introduce an initial ???

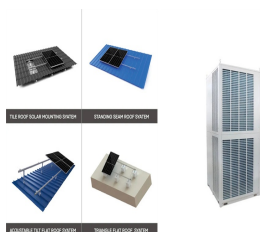


Advanced Powerplant Solutions, LLC "Seller" is not the manufacturer of Rotax??? engines, engine accessories or engine spare parts and does not offer any warranty on them. Seller hereby passes-through and transfers to buyer the manufacturer's written warranty on Rotax??? engines, engine accessories and engine spare parts as the sole warranty on these products.



Advanced Power Solutions (APS) is a leading producer of premium quality batteries, with production site located in Poland: Gniezno. Our mission is to provide easy, safe, and sustainable mobile energy solutions. We aim to create ???

# ADVANCED POWER PLANT SOLUTIONS BOTSWANA



Shumba Tati Solar PV Park is a 100MW solar PV power project. It is planned in North-East, Botswana. According to GlobalData, who tracks and profiles over 170,000 power plants worldwide, the project is currently at the financed stage. It ???



Ordering Information for Advanced Powerplant Solutions, LLC. 24-Hour Ordering Service: We keep order lines open for you around the clock between 8:00 a.m. and 5:00 p.m. (CST) our Customer Service Associates are eager to take your phone order when you call 1-800-532-3462.



Advanced Power seek better ways to a cleaner future. Always. We lead the movement in power plant development and asset management that's efficient and sustainable. LafargeHolcim is the leading global building materials and ???



Matshelagabedi, a diesel power plant with an installed capacity of 72.54 MW. In line with Botswana's NDP 11 two new renewable energy projects were identified. One is a 100 MW (2x50 MW) solar PV power plant which is currently in the procurement phase and the 35MW grid connected PV power plants. The 100MW project is expected to feed electricity

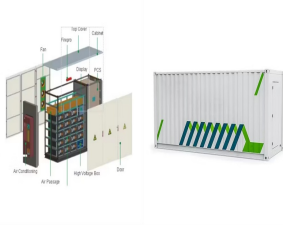


Power Plant Solutions is a leader in the technical services for the energy and marine markets. We serve clients in the Caribbean, Latin-America, Africa and Europe. If you need advanced training for your technicians and engineers or an introduction for non-technical personnel. We offer specialized on-site training in operation, maintenance

# ADVANCED POWER PLANT SOLUTIONS BOTSWANA



Since Smart Grid???Virtual Power Plant has got the potential to change the business model of electricity generation, it will dictate Sampath Kumar V et al. / Energy Reports 4 (2018) 119???128 127



It is developing two thermal power projects, the Benga Independent Power Project in Mozambique and the Mabesekwa Coal Independent Power Project in Botswana, in addition to developing the market for the advanced Mbeya Coal to Power Project in Tanzania. The company has operations in Ireland, Mozambique, Botswana, Tanzania, South Africa and the UK.



Delavan, WI ??? Advanced Powerplant Solutions, LLC (APS), under the new ownership of Jeremy and Daniela Knoll of AeroSport fame, is proud to announce its acquisition of Leading Edge Air Foils, LLC (LEAF). ???



Botswana Power Corporation: Peaking power plant: 1.3 MW [4] 2012  
Botswana Power Corporation: Pilot power plant: Solar. PV solar. Solar power station Community Coordinates Fuel type Capacity (megawatts)  
Year completed Owner ???



Sturdee Energy announced that it has achieved a Commercial Operation Date (COD) on October 12, 2023, as stipulated in the Power Purchase Agreements with Botswana Power Corporation (BPC) for the Shakawe (1MW) and Bobonong (3MW) Solar Plants in ???

# ADVANCED POWER PLANT SOLUTIONS BOTSWANA



For more information about Advanced Powerplant Solutions and its services, please contact: Advanced Powerplant Solutions (800) 532-3462 info@advancepowerplant About APS Advanced Powerplant Solutions, LLC (APS), located in Delavan, Wisconsin, is the Central USA ROTAX independent Service Centre.



BW POWER ENGINEERS provides one stop innovative and effective solutions for electrical power system industry. Contact Us (+267)75 693 479. Email Us. info@bpe .bw is a private limited Engineering company based in ???



APS | Advanced Power Solutions Electrical Engineering excellence. Advance Power Solutions is an Engineering Organisation with over an enormous service to the industry, specializing in Electrical Engineering in the industry. Advance Power Solutions has provided Electrical Engineering excellence to many.



35 Years Experience & Technical Expertise From large scale commercial and residential solar PV systems in South Africa, Botswana, the Indian Ocean Islands and Zambia. Distributors of Leading Products We are the proud distributors of some of the worlds" leading solar brands and products. Measurable Results & Excellent Service We provide our clients with easy ???



The Botswana Coal Fired Power Plant is 300MW coal fired power project. It is planned in South-East, Botswana. The project is currently in announced stage. It will be developed in single phase. The project construction is likely to commence in 2023 and is expected to enter into commercial operation in 2026.

# ADVANCED POWER PLANT SOLUTIONS

## BOTSWANA



The Mabesekwa Export Independent Power Plant is 600MW coal fired power project. It is planned in Central, Botswana. According to GlobalData, who tracks and profiles over 170,000 power plants worldwide, the project is currently at the dormant stage.



The Sese Coal Fired Power Plant is 950MW coal fired power project. It is planned in North-East, Botswana. According to GlobalData, who tracks and profiles over 170,000 power plants worldwide, the project is currently at the dormant stage.



Base Load 300 MW Power Plant: Building on the success of the first phase, the project's second phase involves the development of an additional 300 MW Base Load Power Plant. This expansion demonstrates our dedication to meeting the ???



Jwaneng Solar PV Project is a 100MW solar PV power project. It is planned in JwanengTown, Botswana. According to GlobalData, who tracks and profiles over 170,000 power plants worldwide, the project is currently at the permitting stage. It will be developed in a ???



It summarises the findings of the Advanced Power Plant Flexibility (APPF) campaign of the Clean Energy Ministerial (CEM). The solutions presented in this study have been collected in close collaboration with industry stakeholders, including manufacturers, expert consultancies, system operators and plant operators.