

AILANG WIND POWER DORMITORY



Who is Haimen ailang wind power? It is a well-known private enterprise in the production of wind turbine blades. The Haimen Ailang Wind Power Phase I project was officially signed in July 2018.



Who is Haimen aeolon wind power technology? Haimen Aeolon Wind Power Technology Co.,Ltd. is engaged in the production of wind turbine blades in various series and different wind zones, supporting domestic and foreign MW level land and offshore wind turbines. It is a well-known private enterprise in the production of wind turbine blades.



What is aeolon wind power phase II project? Aeolon wind power phase II project is an expansion project of Haimen Aeolon Wind Power Technology Development Co.,Ltd., which is invested and constructed by Shanghai Aeolon Wind Energy Technology Development Co.,Ltd., the largest private enterprise of wind turbine blade manufacturer in China.



Where is aeolon wind power based? In July 2018, Shanghai Aeolon wind power signed a contract with Haimen port new area, planning to invest 2.02 billion RMB to build a new wind turbine blade production base for large turbines on 383,333a?! (575mu) of land, which is the sixth production base established by Aeolon in China. In March 2019, Aeolon Haimen phase I started trial production.



Why should you choose aeolon wind power? Aeolon Wind Power highly praised the accuracy of project positioning, the high speed of project construction, and the optimization of project services in the new area.

AILANG WIND POWER DORMITORY



What makes Ailang Shang a good company? Ailang Shang has always attached great importance to corporate culture, adhering to the principles of efficiency and pragmatism, scientific management, democratic decision-making, and meritocracy to build the Ailang family, and has won a good reputation in the domestic and international markets.



Axial-flow wind turbines would still generate power when set at 45-degrees from water surface, with flexibility to divert up to 20-degrees horizontally from headwind direction. An angled drive



A growing source of global emissions is the ships that carry most of the goods we consume. A 21st-century generation of cargo ships propelled by the wind can reverse this unsustainable trend.



When you need power at a remote site the Furlmatic model Windchargers provide a reliable and cost effective solution. Power generated can be used for off grid homes, remote telecommunications, monitoring, and electric fences, avoiding the costly and inconvenient installation of grid power.. The Furlmatic Windchargers protect themselves by reducing the a?|



This power mechanics facility and dormitory facility will house students from across Northern Manitoba who are attending Frontier Collegiate Institute. Together these buildings support the Frontier Collegiate Institute campus which provides valuable skills training and support for northern economic growth.

AILANG WIND POWER DORMITORY



Hai Long is introducing Siemens Gamesa's flagship wind turbine a?? SG 14-222 DD to its wind farms in Taiwan. The height of this 14 MW wind turbine is equivalent to that of the Shin Kong Mitsukoshi Department Store in front of Taipei Main Station and it is the state-of-the-art technology on the market. This partnership with Hai Long will also



Understanding how wind conditions affect sailboat orientation is essential for safe and efficient sailing. Navigating Obstacles. The orientation of a sailboat is crucial for navigating obstacles and avoiding collisions.. By adjusting the boat's position relative to the wind, sailors can maneuver around obstacles more effectively and safely.. Sailboat orientation plays a vital role in collision



7.7%. With a total investment of 2 billion yuan, ailang wind power project is the first manufacturing project with the largest one-time investment in haimen port new area. From a?|



,000 of our turbines sold worldwide, mostly to sailboat owners; Over 35 years of developing and manufacturing the Rutlands in the UK; We have led the field in voltage regulator technology with products that combine wind and solar charging, do multi-stage charging and reduce running time of the turbine when the batteries are full.



Buy LU desktop handheld fan cute wind portable dormitory bed power storage gift mini rechargeable fan online today! Product Specifications: * Material: ABS+Silicon * Product Model: SS-2 * Input Voltage: 5V * Input Current: 0.5~1.0A * Output Voltage: 4~7V * Output Power: 4.5W * Charging Time: 4 hours * Working Time: 3-10 hours * Battery Capacity: 2600mAh * Battery a?|

AILANG WIND POWER DORMITORY



i 1/4 ? i 1/4 ?i 1/4 ?i 1/4 ?i 1/4 ?a??i 1/4 ?a 1/4 ?a 1/2 '20071218,, a?|

Commercial and Industrial ESS
Air Cooling / Liquid Cooling

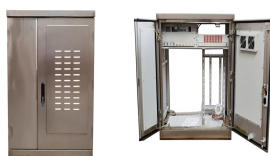
- Budget-Friendly Solution
- Renewable Energy Integration
- Modular Design for Flexible Expansion



At present, there is only one major wind farm in U.S. waters, a five-turbine farm a little over 3 miles southeast of Block Island, Rhode Island, which went into service in late 2016. Other wind farms, including the proposed Cape Wind wind farm, in Nantucket Sound, Massachusetts, have been beset by legal challenges and problems with financing.



Through continuous innovation and hard work, Ailang has made strategic adjustments in the layout of industrial bases and product serialization of offshore wind power. Ailang has formed a pattern with Nanhui Group as the center and three production bases in Northeast Hinggan League, Gansu Yumen and Shanghai Lingang responding to each other.

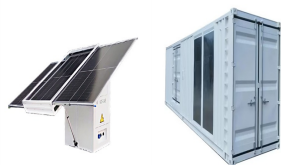


AILANG's Men's Automatic Skeleton Wristwatch is a standout timepiece. Its exhibition back and skeleton facia give you an up-close look of its workings, making this watch a stunning addition to any fashionista's wardrobe. Water Resistance Depth: 3Bar Movement: Automatic Self-Wind. Model Number: 8629. Feature: luminous hands. Dial Window



The recognized points of sail are judged relative to the true wind direction. They include: Into the wind where a sailing craft is pointed directly upwind in the middle of the no-go zone, where sails cannot generate power.; Close-hauled where a craft is sailing, pointed near the no-go zone.; Reaching, including: . Close reach: between close-hauled and a beam reach.

AILANG WIND POWER DORMITORY



The exclusive movement is powered by a fully automatic turbine. Luminous hands absor. Model Name AL-8822 Watch Movement Self-winding Display type Analog Dial Colour Blue, Black, Silver or Grey With Swiss certification and a real visual experience, the Ailang is the best choice for gentlemen, leading the fashion trend. Brand Name: Ailang



Aeolon Technology Co., Ltd. is a leading professional manufacturer of wind power blades. At present, the company has provided innovative technology and product solutions for wind turbine operators and wind farms in many countries and regions around the world, providing high-quality, cost-effective products and customized quality services for global users.



12V wind turbines are known for their efficiency in capturing wind energy and converting it into electrical power. They are often easy to install, making them a practical option for boaters who prefer a DIY approach. a?|

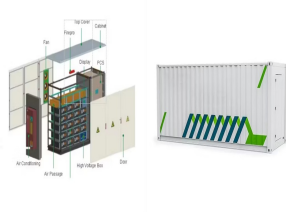


The Volvo Ocean Race was a good test bed for the Silentwind Wind Turbine/Generator. The hand laminated, UV-resistant carbon blades are known for their durability and therefore a good choice for both cruising and a?|



Wind power has been used for sailing since ancient times. The first recorded use of sails dates back to around 3,500 BCE in Egypt, where boats were propelled by large, square sails made of woven reeds or linen. Over the centuries, sail technology evolved, with the introduction of the triangular lateen sail in the Mediterranean, the junk rig in

AILANG WIND POWER DORMITORY



Wind power isn't just for work, though. Creative minds have invented many ways to use wind energy for play. Kitesurfing is one example. Huge sails pull kitesurfers through the water on small boards. Riders cruise at 50 miles per hour (80.4 km/h) or more. The best kitesurfers perform high-flying jumps and tricks.



7.7%. Download this stock image: Jiangsui 1/4 A?CHINA-Photo taken on May 13, 2020 shows ai lang wind power in haimen port new district, east China's jiangsu province. With a a?|



Courses on Dinghies and Cabin Cruisers with a unique teaching method, a continuously updated fleet and wind conditions among the best in the Mediterranean. The CVC Foundation - Centro Velico Caprera ETS pursues a a?|



Buy B BINGER AILANG Men's Skeleton Watches Automatic Mechanical Watch with Dual Balance Wheels (All Black) and other Wrist Watches at Amazon . Fully winding up spring needs be turn the crown clockwise 30-40 rounds to start the watch and give it some reserve power it will wind down and need to be Supplementary winding by hand to get



Wind generators, also known as micro turbines, have come a long way since their first appearance on the cruising scene back in the 1970"s. Store Blog About Contact Subscribe. 5 Best Wind Generators For Sailboats (2024) Written by. a a?|



MOL has cast a spotlight on the potential of wind power as a clean and unlimited source of energy, and has developed the Wind Challenger. Wind Challenger is an innovative solution to reducing GHG emissions which uses state-of-the-art and proprietary technologies that sense wind

AILANG WIND POWER DORMITORY

direction and speed in real time and provides fully automatic control of sail extension, a?

AILANG WIND POWER DORMITORY



Sailing wind power, sailing wind turbine, harness the wind at sea with a Air Breeze or Air X Marine wind power system. Call 303.242.5820 | SAILING: AIR BREEZE TURBINE. With ocean breezes so prevalent, Air is a very typical sight on many sail boats and yachts.