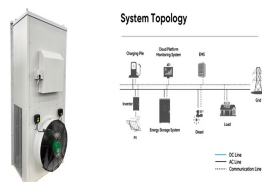


# AIRCRAFT CARRIER ENERGY STORAGE DEVICE TRAM



A tram's hybrid power system mainly consists of an energy storage system and a motor system. The motor system is connected to the DC bus through the inverter, whose power is all from the hybrid



kinetic energy of the aircraft is harvested and temporarily stored so that it then enables engine-less taxiing to the gate. At the gate, the energy storage device can be recharged through the grid, allowing the aircraft to perform also an engine-less taxi-out process. The main engines would only be turned on for the warm up time before take-off.



But when the navy's new Gerald R. Ford class aircraft carriers come online from 2016, the age of steam may finally come to an end. In 2009, the US Naval Air Systems Command (NAVAIR) awarded General Atomics (GA) the prime contract to provide EMALS and Advanced Arresting Gear (AAG) for the first-in-class vessel Gerald R. Ford, known by the ???



Traction power fluctuations have economic and environmental effects on high-speed railway system (HSRS). The combination of energy storage system (ESS) and HSRS shows a promising potential for utilization of regenerative braking energy and peak shaving and valley filling. This paper studies a hybrid energy storage system (HESS) for traction substation ???



WASHINGTON, D.C. ??? The U.S. Department of Energy (DOE) today announced \$15 million for 12 projects across 11 states to advance next-generation, high-energy storage solutions to help accelerate the electrification of the aviation, railroad, and maritime transportation sectors. Funded through the Pioneering Railroad, Oceanic and Plane ???

# AIRCRAFT CARRIER ENERGY STORAGE DEVICE TRAM



Energy storage systems are essential in modern energy infrastructure, addressing efficiency, power quality, and reliability challenges in DC/AC power systems. Recognized for their indispensable role in ensuring grid stability and seamless integration with renewable energy sources. These storage systems prove crucial for aircraft, shipboard ???



The tram mainly comprises the energy storage system, traction system, and auxiliary system, and the specific structure is shown in Fig. 1. As the sole power source of the tram, the battery pack can supply power to the traction system and absorb the regenerative braking energy during electric braking to recharge the energy storage system.



Aircraft carrier energy storage technology plays a crucial role in enhancing the operational capabilities of modern military vessels. 1. It involves the integration of advanced energy storage systems to optimize power management and distribution. 2. This technology enhances operational endurance and sustains critical systems onboard.



Projected roadmap toward more electric aircraft powertrains; (a) technological targets roadmap, and (b) roadmap of aircraft electrification in terms of power level of electric propulsion [53], [122].



Aircraft carriers employ advanced energy storage systems, integrated battery technologies, effective fuel management strategies, and innovative regenerative systems to sustain operations. 1. Advanced energy storage systems involve the utilization of robust batteries, enabling immediate power access for critical systems. 2. Integrated battery technologies ???

# AIRCRAFT CARRIER ENERGY STORAGE DEVICE TRAM



mechanical energy conversion processes, and it can be improved by transitioning to a more-electric powertrain architecture. Fig. 1(c) depicts a more electric aircraft propulsion system formed by a combination of energy sources (i.e., jet fuel and electric energy storage devices), power converters, electric



B64F ??? GROUND OR AIRCRAFT-CARRIER-DECK INSTALLATIONS SPECIALLY ADAPTED FOR USE IN or hydraulic energy storage system integrated into the tram 100 or arranged under the tarmac and connected to the power rail???during a landing routine and then extract this energy Once the distance between the aircraft and the tram 100 exceeds a preset



As a result, sustainable aviation has been recently regarded as the key challenge facing the modern aeronautics discipline. The need to reduce the environmental impact of aircraft has been met with significant growth in research into select alternative, sustainable energy carriers for aviation across academic, government, and industry groups. Moreover, numerous ???



The nuclear-powered USS Gerald R Ford and the diesel-powered HMS Queen Elizabeth are the latest and most modern aircraft carriers in the world. You may think that being nuclear-powered, Ford-class carriers will be a clear winner as they have virtually unlimited ranges ???

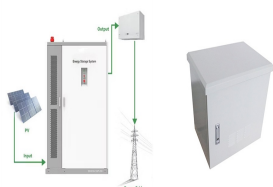


Storage devices can take or provide prescribed power, if available. Consequently, the optimization potential of energy management functions strictly depends on the complexity and dimension of the respective system. II. T. YPICAL. I. MPLEMENTATION. This section describes a typical implementation of an energy management of current aircraft

# AIRCRAFT CARRIER ENERGY STORAGE DEVICE TRAM



Therefore, the use of energy-storage traction power supply technology can achieve good results in urban construction [[3], [4], [5]]. Tram with energy storage is the application of energy storage power supply technology, the vehicle itself is equipped with energy storage equipment as the power source of the whole vehicle.



energy carrier has been derived and verified for battery-based dual-energy systems. Correspondingly, a set of aircraft design axioms and sizing heuristics relevant to battery-based DESPPS

APPLICATION SCENARIOS



This article provides a detailed review of onboard railway systems with energy storage devices. In-service trains as well as relevant prototypes are presented, and their characteristics are ???



The Gerald R. Ford-class nuclear-powered aircraft carriers are currently being constructed for the United States Navy, which intends to eventually acquire ten of these ships in order to replace current carriers on a one-for-one basis, starting with the lead ship of her class, Gerald R. Ford (CVN-78), replacing Enterprise (CVN-65), and later the Nimitz-class carriers.

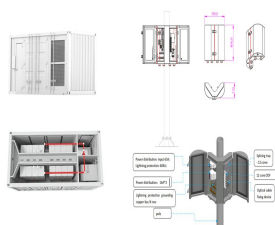


The aircraft carrier energy storage device is a sophisticated system designed to manage and store electrical energy for naval vessels, specifically aircraft carriers. 1. It facilitates efficient use of energy generated by onboard systems, 2.

# AIRCRAFT CARRIER ENERGY STORAGE DEVICE TRAM



Energy storage systems and thermal management issues are summarized in Sects. 7.5 and 7.6, 7.11, the architecture of aircraft power systems includes several AC/DC loads and aircraft devices. In this section, a brief information has been given about power electronics converters.



Energy storage devices on aircraft carriers serve crucial functions in maintaining operational efficiency and resilience during maritime missions.

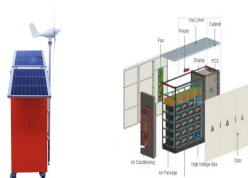
1. Batteries are prevalent for short-term power needs, enabling the quick release of energy for essential systems like navigation, communication, and emergency protocols.



The more commonly used is on-board energy storage technology. There are some similarities between a tram with on-board energy storage and an electric vehicle. However, there are also ???



Ammonia is regarded as a promising energy carrier due to its zero-carbon emissions and its suitability for long-distance, large-scale storage, and transportation. Ammonia/hydrogen mixed combustion is an important way to solve the problem of high ignition temperature and low flame speed in the process of ammonia combustion.



More Electric Aircraft With Hybrid Energy Storage Systems Yu Wang, Member, IEEE, Fang Xu, Shiwen Mao, Fellow, IEEE, Shanshui Yang, Member, IEEE, and Yinxing Shen Abstract??? More electric aircraft (MEA) has become the trend of future advanced aircraft for its potential to be more efficient and reliable. The optimal power management, thus, plays an

# AIRCRAFT CARRIER ENERGY STORAGE DEVICE TRAM



The storage devices featured 600 Wh and 180 kW of rated energy and power, with a total weight of 430 kg and consequent specific energy and power of 1.4 Wh/kg and 418 W/kg, respectively. Experimental tests on the catenary/EDLC hybrid units showed a modest 1.6% reduction in the peak power demand from the overhead wire during accelerations due to



The USA aircraft carrier Gerald R Ford has an "electromagnetic aircraft launch system" (Doyle); to enable this to work properly, it is fitted with flywheels to store energy from the ship's engine for quick release when needed to help lift the aircraft. This technology allows 122MJ to be released in 2???3 s and this energy is restored in 45 s.



In order to research the safety characteristics of carrier-based aircraft in yaw arrest, a complete dynamic model of the arresting system of a certain type of aircraft was developed to understand more about its dynamic properties. Based on the discrete kink-wave model, a simulation of centering arrest was conducted. The simulation results were compared ???



This paper introduces an optimal sizing method for a catenary-free tram, in which both on-board energy storage systems and charging infrastructures are considered. To quantitatively analyze the trade-off between available charging time and economic operation, a daily cost function containing a whole life-time cost of energy storage and an expense of ???



Today, various forms of ESSes???such as flywheels, electric double-layer capacitors (EDLCs), batteries, fuel cells and superconducting magnetic energy storage (SMES) devices???have been proposed and utilized in railway systems for different purposes.

# AIRCRAFT CARRIER ENERGY STORAGE DEVICE TRAM



A drawing of the linear induction motor used in the EMALS. The Electromagnetic Aircraft Launch System (EMALS) is a type of electromagnetic catapult system developed by General Atomics for the United States Navy. The system launches carrier-based aircraft by means of a catapult employing a linear induction motor rather than the conventional steam piston, providing ???



The announcement states that the Energy Storage System (ESS), which stores energy from the ship in flywheels for immediate use in launching aircraft, will not be part of this planned contracting effort. A Boeing unmanned MQ-25 aircraft is given operating directions on the flight deck aboard the aircraft carrier USS George H.W. Bush (CVN 77)