

AN EXCLAMATION MARK APPEARS ON THE PHOTOVOLTAIC PANEL BATTERY



What does a solar charge controller battery blinking green mean? solar charge controller battery blinking green means the battery is fully charged and in a saturated state. A flashing red battery light means the battery is undercharged and needs to be recharged in time. Solar controller loads are small DC devices that can be powered directly by a solar battery.



What does it mean when a solar charge controller flashes? This indicates that the solar charge controller has successfully completed the charging process, and the battery is in good condition. On the other hand, if the battery icon is slowly flashing, it signals that the battery is losing power and needs to be charged promptly.



How to fix a battery overcharging on a solar panel? One easy way to fix this issue is to put a regulator between the solar panels and the controller. It would control voltage and current and prevent overcharging. Another thing is to check if your battery is compatible with your solar panel PV system, and Solar Charge Controller.



What does the battery icon on a solar charge controller mean? The battery icon blinking on a solar charge controller with an LCD display conveys specific information about the battery charging process. It indicates whether the battery is fully charged, running well, or losing power and needs to be charged in time.



What does E04 mean on a solar charge controller? E04 ??? Battery Over voltage or Load off E05 ??? Solar Panel Over Current, Controller stop working solar charge controller Error code E01 appears when the battery bank is at low voltage and the charge controller cannot charge it. To correct this, first charge the battery bank using AC chargers or replace the battery with a new one.

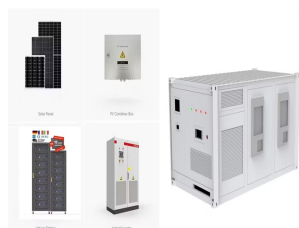
AN EXCLAMATION MARK APPEARS ON THE PHOTOVOLTAIC PANEL BATTERY



Why is my solar charge controller battery light blinking? Solar charge controller battery icon flashing means that the battery is not charging properly, which may be caused by insufficient battery power, charging problem, ambient light change, controller malfunction or bad weather conditions. Solar battery light blinking yellow means the battery is charged.



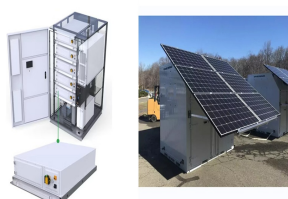
Rechargeable??Battery??Box??charge??the??Energy??Meter??by??leaving??them??connected??for?? ????? Press??the??green??On/??button??fO???or????????seconds??until??a??triangle??with??an??exclamation??mark??appears??blinking??with??one??second??intervals??on??the??display
Connect??the??Solar??Panel??or??E-Motor????used??as??a??generator



Yellow triangle with an exclamation mark on Battery icon. If you notice the yellow triangle, run the Power Troubleshooter. If the tool can fix the issue, then there is no further explanation as to



Fixing Battery Overcharging. One easy way to fix this issue is to put a regulator between the solar panels and the controller. It would control voltage and current and prevent overcharging. ???



This warning light is shaped like a battery (or a Lego brick) with a positive and negative symbol on each side and is a solid red color. A triangle warning symbol with an exclamation mark in the center is typically used to indicate that the car has detected a serious fault. It usually appears as a spanner with an exclamation mark

AN EXCLAMATION MARK APPEARS ON THE PHOTOVOLTAIC PANEL BATTERY



Why does my Wi-Fi have an exclamation mark Android? The exclamation mark next to your Wi-Fi on an Android device indicates that there's an issue with the network connection. Here are several possible reasons for this problem: 1. Network connectivity issues: The Wi-Fi exclamation mark can appear if your device is having trouble connecting to



Snail trails are brownish discoloration marks that appear on solar panels. Causes include moisture, manufacturing defect and faulty silver paste. inverter and charge controller from the system. Using a multimeter, check the voltage of the solar panel. Even without the battery, the panel should be absorbing energy from the sun. If there is



Also, be sure to use a good solar panel and a good battery because bad equipment always causes problems. Replace Bad Equipment. It's highly recommended that you replace old and rusty equipment with new up-to-date ones. Things like broken panels, old models of charge-controller, batteries in bad condition, etc. should be replaced. It'd fix a



This red exclamation mark contained in a circle has slightly varied meanings based on each car manufacturer. Red Battery Warning Light or by navigating through the options on the display panel. ASR Warning Light Meaning It's almost always beneficial to leave ASR switched on. If you switch off the ASR system, the ASR OFF warning light



I have ensured that I have installed all windows updates. I've allowed the battery to discharge and recharge before attaching the surface dock again. when I look at the "power and battery" section under "system" in settings the exclamation mark over the battery does not give me any messages or tell me what the issue may be.

AN EXCLAMATION MARK APPEARS ON THE PHOTOVOLTAIC PANEL BATTERY



Battery with exclamation mark "error" icon appears. Charge Kindle for 24 more hours. Press and hold the power button for 40 seconds, then release. Battery with exclamation mark "error" icon appears. Drop Kindle in waste receptacle. Buy refurbished Kobo Aura H2O. 16 hours later, default Kindle screensaver appears in Kindle sitting in waste



If you own a Kindle, you may have encountered an alert on your device at some point???a battery symbol with an exclamation mark inside. This mark is a warning sign that indicates a problem with your device's battery.While it can be concerning to see this symbol, there are several solutions that you can try to resolve the issue.. One possible reason for the ???



Any cables that go from your inverter to your panels. Your solar panel array/s. If it is possible, a picture of underneath the panels or the gap between the panels and the roof (we're looking for loose cables). It would also be useful if you're able ???

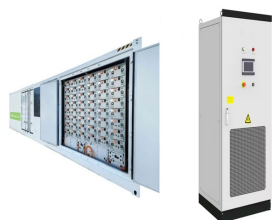


The battery icon on a solar charge controller blinks to indicate charging status. Green means charging, orange means low battery, red means over-discharge. Monitor the icon to ensure optimal battery health and ???



The battery with an exclamation mark appear when a fault has been detected with the battery sensor. The battery may not be charging, do as above. The battery may not be charging, do as above. The Honda Jazz ABS warning light comes on for a few seconds when the ignition is set to on and goes out when the engine starts.

AN EXCLAMATION MARK APPEARS ON THE PHOTOVOLTAIC PANEL BATTERY



Solar Power. Solar Panels. Ameresco Panels ??? Glass; Alpex Panels ??? Glass; Spectra PERC-S ??? Glass; If this message appears and heating occurs when there is no excess solar generation e.g. at night. This can be overcome by ???



Solar Panel Servicing; Solar FAQs; by Technology. Solar PV - Commercial; Solar PV - Homeowner 1900mAh battery will be compatible with your Sunny Beam, despite the fact that they are 1.2V. SolarEdge issues. My SolarEdge monitoring shows an orange question mark This means there is My SolarEdge monitoring shows an orange exclamation mark



Yellow triangle with exclamation on battery icon any idea what a yellow triangle with an exclamation point means. New SP7, only happening when plugged in. It is unusual that the exclamation mark in a yellow triangle ???



This exclamation mark, commonly known as the "Battery with Exclamation Point," is an indication that your Kindle's battery level has dropped to a critically low point. When the battery level reaches a certain low point, the Kindle automatically goes into a low-power mode to conserve energy.



The control panel on my NANROBOT D6 + electric scooter has suddenly had a red exclamation mark appear, the scooter no longer will move. Does anyone know what the problem may be? I have a Nanrobot D6 + and the red exclamation mark appeared on my control panel today after breaking to a stop, but now when I turn on the key+control panel, the

AN EXCLAMATION MARK APPEARS ON THE PHOTOVOLTAIC PANEL BATTERY



Solved: My outdoor cameras are showing a red battery with an exclamation mark in the app. They are also saying "Charging paused - Cameras battery Arlo is the world's first 100 percent wireless high-definition smart home security camera.



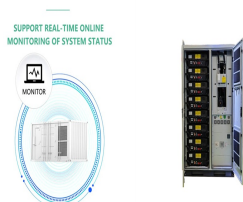
This warning light is shaped like a battery (or a Lego brick) with a positive and negative symbol on each side and is a solid red color. A triangle warning symbol with an exclamation mark in the center is typically used to indicate that the car has detected a serious fault. It usually appears as a spanner with an exclamation mark



The car then relies on the battery to power equipment such as the radio and air-conditioning, and to restart the engine when you go to move off again. If electricity levels in the battery run low, stop-start is disabled until the engine can recharge the battery again and the symbol containing the letter "A" with a line through it will light up.



Any behavior that appears to violate End user license agreements, including providing product keys or links to pirated software. Unsolicited bulk mail or bulk advertising Any link to or advocacy of virus, spyware, malware, or phishing sites.



A battery with an exclamation mark means a warning message that your gadget needs attention and can't hold a charge for longer. If you ignore it, your device will eventually stop working and won't turn on anymore. You shouldn't panic if an exclamation mark appears on your screen. Instead, you should take action to remove it by

AN EXCLAMATION MARK APPEARS ON THE PHOTOVOLTAIC PANEL BATTERY



Exclamation Mark Reasons. There can be a few reasons why your Kindle is showing an exclamation mark. It generally means that the battery is no longer communicating with the motherboard and might need a replacement. Here are a few solutions to remove the exclamation mark from your Kindle:



This symbol usually appears as an exclamation mark over the image of a car or battery on the dashboard. The exact meaning of the "Electrical Fault" symbol can vary depending on the make and model of the car, but it generally indicates a problem with the car's power system, battery, motor, or wiring.