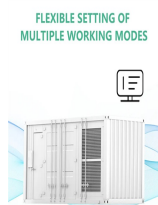
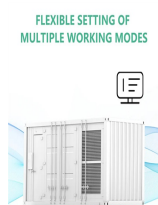


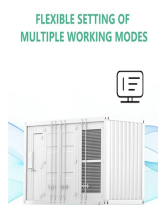
ANALYSIS OF PEST MODEL IN ENERGY STORAGE INDUSTRY



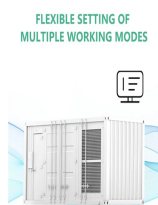
What is PEST analysis? PEST analysis is an analytical tool to define the (Political,Economic,Socio-Cultural and Technological) factors used in the environmental scanning components of strategic management which help to minimize the threat and take advantages of opportunities .



What is PESTLE analysis? Pestle Analysis is an analytical framework that evaluates the Political, Economic, Social, Technological, Legal, and Environmental factors shaping Tesla's strategic landscape. It aids in understanding opportunities and threats arising from shifting government policies, market trends, legal obligations, and global sustainability goals.



Is energy storage a precondition for large-scale integration and consumption? So to speak,energy storage is the precondition of large-scale integration and consumption of RES. However,China's energy storage industry is at the exploration stage and far from commercialization. This restricts the development of RES to certain extent. For this reason,this paper will concentrate on China's energy storage industry.



What was the growth rate of energy storage industry in 2015? Driven by the Euramerican and Asia-Pacific market,worldwide energy storage industry experienced fast development in 2015. According to CNESA,global cumulative installed capacity of energy storage system was 946.8 MW (excluding PSS,CAES and heat storage) by the end of 2015 and the growth rate was 12.7%compared with year 2014.



What is Tesla PESTLE analysis? As this Tesla PESTLE Analysis reveals, factors like government policy, global economic trends, shifting consumer values, legal regulations, and climate challenges all play crucial roles in defining the company's trajectory. By applying the PESTLE analysis framework, we gain insight into both the risks and opportunities Tesla must navigate.

ANALYSIS OF PEST MODEL IN ENERGY STORAGE INDUSTRY



Does China's energy storage industry have a comprehensive study? However, because of the late start of China's energy storage industry, the comprehensive study for the whole industry is very few. We found a review which provided a relatively comprehensive analysis of the technical and economic issue of it. Compared with other studies, its research has a good comprehensiveness.



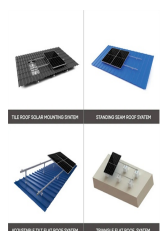
The purpose of this study is to select the best energy storage source for Electric Vehicle in the future. In light of this purpose, firstly, specific criteria has been proposed as main factors influencing on energy storage technology ???



Biofuels production is expected to be an intrinsic confluence to the renewable energy sector in the coming years under the European regulations for renewable energy. Key standpoints of the biofuels promotions are the ???



1. PEST 2. 2.1. 2009617 ???



1. Introduction. Several frameworks in the literature such as the Environmental Impact Assessment (EIA), the International Organization for Standardization (ISO) regulations, the political, economic, social, ???

ANALYSIS OF PEST MODEL IN ENERGY STORAGE INDUSTRY



For this reason, this paper will concentrate on China's energy storage industry. First, it summarizes the developing status of energy storage industry in China. Then, this ???



Larger than its predecessors, the 4680 cell offers significant improvements in energy density, power, and range, potentially lowering costs and making EVs more accessible to the mass market. Tesla claims the 4680 cells ???



*Indian conglomerates plan to invest Rs. 67,42,400 crore (US\$ 800 billion) in green hydrogen, clean energy, semiconductors, and EVs. * India's installed renewable energy capacity is expected to increase to about 170 GW by March ???



Definition. PEST analysis is an analysis of the political, economic, social and technological factors in the external environment of an organization, which can affect its activities and performance. [1] PESTEL model (or ???



PEST Analysis???: a framework that examines Political, Economic, Social, and Technological factors???: provides businesses with a structured approach to evaluating these macro-environmental influences this article, we will explore ???