

ANDORRA MODULAR UPS



What is a modular UPS system? Modular UPS Systems can be designed for capacity or redundancy with the flexibility to be reconfigured to match any change in application. A Modular UPS offers a host of benefits over traditional monolithic, Uninterruptible Power Supply systems, including: Hot-swappable modules make them easily scalable to keep up with your power needs.



What are the benefits of a modular UPS? A Modular UPS offers a host of benefits over traditional monolithic, Uninterruptible Power Supply systems, including: Hot-swappable modules make them easily scalable to keep up with your power needs. Easier to maintain as you can replace the power modules whilst the system remains active.



What is the difference between a modular and a traditional ups? In a traditional UPS, failure of a single module can bring down the entire system. However, in a modular design, power modules function independently, reducing the impact of failures. The distributed architecture of a modular UPS increases system resiliency and fault tolerance, minimizing the risk of total system shutdown.



What is a powertecnique modular UPS system? A Powertecnique Modular UPS system offers you peace of mind that your business can remain constantly operational, ensuring no potential loss of revenue. What is a Modular UPS? A Modular UPS system differs from more traditional systems as they are made up of a frame populated with power modules to meet the need of the specific application.



What is enertronic modular se? Each ENERTRONIC modular SE UPS module is a highly efficient double conversion, serial on-line UPS (VFI-SS-111). By supplying the critical load via the ENERTRONIC modular SE's rectifier and inverter the quality of voltage and frequency experienced by the critical load is significantly improved. IGBT UPS technology

ANDORRA MODULAR UPS



Why should you choose enertronic modular se? With its ???pay as you grow??? scalability and very high operating efficiency,even at partial loads,the real running costs of the ENERTRONIC modular SE are minimised without the need to compromise on power quality. Each ENERTRONIC modular SE UPS module is a highly efficient double conversion,serial on-line UPS (VFI-SS-111).



Liebert APM UPS. The row-based Liebert APM is a transformerless, on-line UPS that allows quick and easy capacity increases with modular power scalability - no additional floor space required. The UPS operates with high efficiency - up to 94% at loads of 50-100%.



The MTI250 Modular Ups Series Rack Mounted Modular UPS is scalable, hot-swappable, online double conversion. The power capacity is from 25 to 200kVA/kW, it's the ideal choice for modern data center. With the latest IGBT three-level and full DSP control technology, the new MTI250 series delivers the best combination of reliability and



4th Generation True Modular UPS System Cumulus Power meningkatkan desain yang ada pada UPS modular conventional di zaman sekarang ini. Setiap module mempunyai semua komponen atau elemen yang seharusnya ada di dalam sebuah UPS - rectifier, inverter, static switch, display - dan hal yang paling penting- sebuah kontrol logic sebagai otak untuk mengontrol dan ???



Why a modular UPS increases availability and lowers total cost of ownership. ABB's unique UPS design is based on the concept of true modularity. Each UPS module has all the hardware and software needed for autonomous operation ??? rectifier, inverter, battery converter, static bypass switch, back-feed protection, control logic, display, and

ANDORRA MODULAR UPS



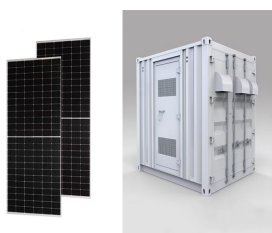
MODULYS RM GP is a 3-phase modular UPS system designed for 19" rack integration. Easy to integrate and install whilst simple to manage and maintain, it provides maximum availability and power protection in a compact design leaving free space for other rack-mounted devices.



El tel?fono que te proporcionamos a continuaci?n corresponde con el tel?fono principal de Ups, si necesitas contactar por tel?fono con una oficina concreta de Ups en Andorra, te mostramos tambi?n todas las ubicaciones y tel?fonos de cada oficina de Ups en Andorra. N?mero atenci?n al cliente Ups de Andorra 900102410



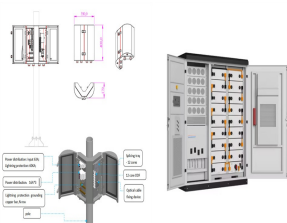
Liebert APM UPS, 30-600 kW. The Liebert APM is a versatile and modular, transformer-free UPS designed to operate with a maximum energy efficiency of up to 96.3% for the protection of medium to large-sized business-critical applications.



By allowing for easy addition or removal of power modules, a modular UPS design simplifies capacity upgrades and reduces downtime during maintenance or expansion. Organizations can start with a base configuration ???



The UPS parallel expansion capability allows users to customize their power systems by connecting multiple UPS units, therefore reaching even higher capacity and achieving N+X power redundancy to protect the systems against power failures.



Liebert APM UPS. The row-based Liebert APM is a transformerless, on-line UPS that allows quick and easy capacity increases with modular power scalability - no additional floor space required. The UPS operates with high efficiency - up to 94% at loads of 50-100%.

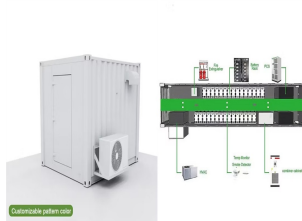
ANDORRA MODULAR UPS



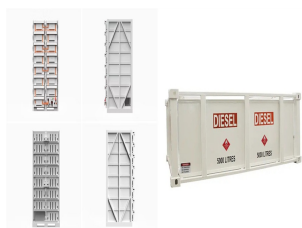
The Vertiv Liebert APS is a modular online double conversion UPS, offering the highest level of power conditioning and power protection for critical IT systems. Continuous power conditioning, zero transfer time, pure sinewave output and ???



With modular UPS, it's possible to solve a number of problems in parallel ??? a key concern for every operator responsible for a critical application." Mauro FRIZZIERO Product Creation Manager. Don't just take our word for it ??? here's the data: 1 000 000h. MTBF engineered-in. 10 000+ UPS proven.



Data center energy requirements are complex, time-sensitive, and highly specific. When choosing UPS architecture, all the needs are evaluated carefully and prioritized. A Modular UPS consists of multiple smaller UPS modules, and the number of UPS modules internally is paralleled to achieve the desired level of redundancy. In modular systems, it is easy to achieve redundancy or ???



Riello UPS" Business Development Manager, Chris Cutler, explores the next generation of ultra-high efficiency modular UPS systems and how they will help data centre operators reduce their total cost of ownership. While every UPS manufacturer strives to achieve 100% efficiency, current technology ??? not to mention the laws of physics



Such as rack mounted UPS power supply air conditioning, modular UPS, dual bus power supply system with UPS as the core, modular wiring system, modular power distribution system, etc. Modular design has become a principle that must be observed in the construction of data center. The following points highlight the advantages of modular design.

ANDORRA MODULAR UPS



The all-new Vertiv Liebert(R) APM Plus is a modular high density transformer-free UPS which brings exceptional features for mission-critical applications. The modular architecture of the Vertiv Liebert(R) APM Plus allows a single unit capacity to be scaled up to a maximum of 500 kW in one single unit. There are two different frames



Incorporate the Smart-UPS Modular Ultra into a rack or add a standalone tower for a more flexible installation. Smart-UPS Modular Ultra: 2.5x the power in half the size. An unmatched UPS in power and size Up to 2.5x more power density



As UPS modulares garantem a máxima disponibilidade de energia elétrica a uma grande variedade de setores empresariais. Flexíveis, de fácil utilização e rápida extensão, uma UPS modular é um elemento crucial para a escalabilidade da



CPSY(R) Modular UPS CPSY (R) is one of the top 10 largest modular UPS manufacturers in China. With a huge manufacturing plant, 200+ employees, and more than 11 years of experience in R& D, manufacturing different kinds of



Modular UPS Systems provides you with great flexibility as you can adapt UPS power to powers. The individual modules in modular UPS are hot-swappable, with connected modules being automatically detected. The removal or addition of modules can be completed whilst the system is still running, so you can upgrade your system within a few minutes

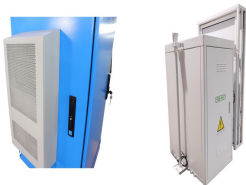


A modular UPS system is built from a combination of individual modules that are linked and work together. Each UPS module has everything it needs to function, including a rectifier, inverter, battery converter, a static bypass switch and back-feed protection. Modular UPS systems are

ANDORRA MODULAR UPS

housed in racks, stacked alongside and on top of one another.

ANDORRA MODULAR UPS



Modular UPS systems are now dominating the mainstream marketing of the large UPS manufacturers and analysts predict the future market growth rate of modular UPS to overtake traditional standalone systems. To determine which technology will be the most resilient, efficient and cost effective for use, the user and sites requirements should be



Each ENERTRONIC modular SE UPS module is a highly efficient double conversion, serial on-line UPS (VFI-SS-111). By supplying the critical load via the ENERTRONIC modular SE's rectifier and inverter the quality of voltage and ???



Modular UPS ensure maximum availability of electrical power to a multitude of business sectors. Flexible, easy to use and quick to extend, a modular UPS is the gold standard in power scalability and risk-free maintenance.



A modular UPS system comprises of a UPS frame into which UPS modules are installed to provide an uninterruptible power system that can be arranged as N+X for redundancy or N for capacity (referred to as N+1 UPS). A modular UPS can scale vertically up to the maximum capacity rating of the UPS frame. UPS frames can be installed in parallel to



Modular UPS The most Hi-Tech systems in the market; the systems are designed in modules of 10KVA or 25KVA. They are HOT-SWAPPABLE, rugged and reliable. The special feature is that Batteries are also HOT-SWAPPABLE. The system allows you to program the testing of batteries and a scheduled shut down.