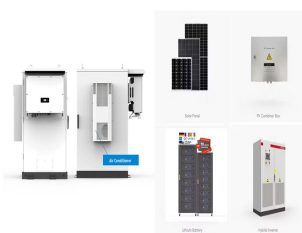


# APPLY FOR SOLAR POWER GENERATION ON THE FACTORY ROOF



The company had recently installed a roof-top solar system with a capacity of 440 KW on its factory roof for captive power generation. Key Points: i. Business Operations: Unique Welding Products Pvt. Ltd. is engaged in the manufacturing and sale of welding wires. The company has a GST registration number and conducts its business by discharging



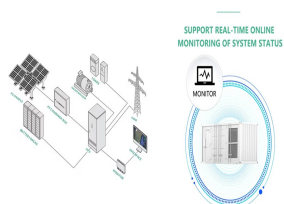
c) The different solar panels, inverters and various solar technology chosen. The basic components of a commercial solar power system include the solar panels, the inverter power station, the cable management ???



1. The household must be an Indian citizen. 2. The household must own a house with a roof that is suitable for installing solar panels. 3. The household must have a valid electricity connection. 4. The household must not have availed any other subsidy for solar panels



1 ? Maximum Loan amount: Rs. 6 Lakhs, depending upon the capacity of rooftop solar power system. (@ Rs. 50,000/- to 70,000/- per kW) For installation of rooftop solar power system up-to 3kW-Max. Loan amount- Rs. 2.00 lacs. For installation of rooftop solar power system more than 3 KW and up-to 10kW-Max. Loan amount- Rs. 6.00 lacs



Installing Solar PV on your factory roof or ground offers numerous benefits, from reducing operational costs to enhancing sustainability. Factories are often high-energy consumers, and solar panels allows your business to generate a significant portion of your energy on-site, lowering electricity bills and insulating your business from rising energy prices.

# APPLY FOR SOLAR POWER GENERATION ON THE FACTORY ROOF



Current rules that require businesses to apply for planning permission if solar panels will generate more than one megawatt of electricity will also be scrapped, meaning organisations will be able



It has a massive installation of 840 solar panels erected on its premises, delivering a noteworthy annual contribution to reducing carbon emissions. Another remarkable case is the SolarTurtle, a South African based company. The company's factory manufactures collapsible solar panels stations, ironically powered by solar energy itself.



**Solar Panels Require Minimal Maintenance** The great thing about solar panels is that they require very little maintenance. For the most part, all you need to do is make sure they are kept clean and free of debris. This means occasionally removing snow or leaves from the surface of your panels during winter months or after a storm.

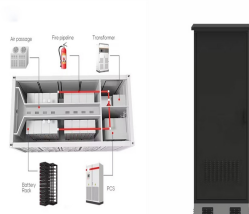


The main purpose of the solar photovoltaic power plant (SPVPP), with installed power of 500 kW on the roof of the factory GRUNER Serbian Ltd in Vlasotince, is to electrical supply of consumers in



Explore the financial implications of factory solar panel adoption in our latest article. We break down upfront costs, operational expenses and the potential for long-term savings. Dive into how factors like installation size, panel type and location affect prices, and learn about government incentives such as the Feed-in Tariffs and Smart Export Guarantee.

# APPLY FOR SOLAR POWER GENERATION ON THE FACTORY ROOF



That's where industrial solar panels can benefit the manufacturing industry. How Long Do Industrial Solar Panels Last? Solar panels typically come with at least a 25-year warranty and have an expected lifespan of 25-30 years ??? which is how long you could be fixing your electricity rate. In reality, solar panels can outlive their warranties



Established in 1994, GB-Sol is an independent UK company, manufacturing solar PV panels and mounting systems at our spacious factory on the Treforest Industrial Estate, just north of Cardiff. A spin-out from the Cardiff ???



Roof-mounted solar. Roof-mounted or wall-mounted commercial solar panels should project no more than 200mm from the wall surface or roof slope; With pitched roof and flat roof installations, the panels need to be ???



1. Power Rating (Wattage Of Solar Panels; 100W, 300W, etc) The first factor in calculating solar panel output is the power rating. There are mainly 3 different classes of solar panels: Small solar panels: 50W and 100W panels. Standard solar panels: 200W, 250W, 300W, 350W, 500W panels. There are a lot of in-between power ratings like 265W, for

Commercial and Industrial ESS  
Air Cooling / Liquid Cooling  
● Budget Friendly Solution  
● Renewable Energy Integration  
● Modular Design for Flexible Expansion

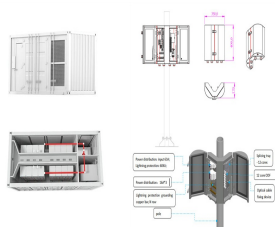


To bring these energy costs down, many companies harness the power of renewable energy by adding solar panels to their factory and warehouse roofs. By adding solar panels to the roof of your warehouse or factory, you can ???

# APPLY FOR SOLAR POWER GENERATION ON THE FACTORY ROOF



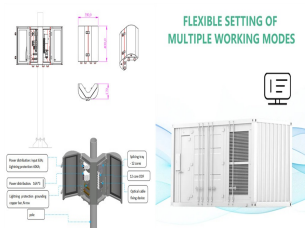
Over the past decade, solar panel prices have decreased sharply due to technological advancements in solar photovoltaic technology. Despite the high upfront investment, solar is proven to be the most beneficial and rewarding renewable energy source that supplies electricity free of cost for 25 years. Solar panels" improved energy generation efficiency, ???



A significant benefit is the ability to tailor solar power systems to factory and warehouse roof's specific design, size, and energy consumption profiles. This customisation enables businesses to maximise energy capture and efficiency, ???



Your actual savings may vary according to a range of factors including your location, which direction your roof faces, the pitch or angle of your roof, shading or obstruction and weather conditions. Potential savings on the electricity bill and payback estimations do not take into account inflation of grid electricity tariff and any maintenance costs that you may incur during ???



Oxford, 9 August 2024, Scientists at Oxford University Physics Department have developed a revolutionary approach which could generate increasing amounts of solar electricity without the need for silicon-based solar panels. Instead, their innovation works by coating a new power-generating material onto the surfaces of everyday objects like rucksacks, cars, and mobile ???



Whether you opt for ground-mounted or roof-mounted panels, we can design and install a PV solar system that will serve you reliably for decades to come. Harness the power of commercial solar panels to significantly diminish your factory's dependence on ???

# APPLY FOR SOLAR POWER GENERATION ON THE FACTORY ROOF



A spin-out from Cardiff University, GB-Sol has been at the forefront of solar power generation for several decades. Today, we continue to lead in the application of solar through our stunning solar PV slates, roof-integrated solar power ???



The solar project subsidy in Maharashtra is managed by MEDA. Maharashtra's installed solar energy capacity now accounts for more than 1800 MW and rooftop solar is near 230 MW. It has the fourth-highest installed rooftop solar power generation capacity across the country. The state is strengthening its policy of providi



The solar panel for flat roof can be easily installed on the roof of the company and these are further used for the power generation that can be used for the varieties of the purposes. power supply of the factory, etc. These solar panels are also helpful for heating the water that can be directly or indirectly used further uses. There are

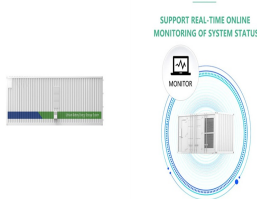


4 ? Commercial solar panel installations in the UK not only requires careful planning and design but also need specific permits and approvals to ensure compliance with regulations and local requirements. Our experience shows that understanding the approvals landscape and ???



3. How long does a solar power plant last? Generally, solar panels can withstand snow, hail, and wind and are extremely durable. The different components of a solar power system for factories could require some replacement after a certain period of time. Still, solar panels are entirely sufficient in providing electricity for approximately 25.

# APPLY FOR SOLAR POWER GENERATION ON THE FACTORY ROOF



Solar Roof Top Net metering services- field instructions issued regarding. IPC Wing Solar Rooftop Net Metering Scheme Technical Standards for connectivity of the distributed generation resources CEA Regulations 2013-Communicated-Reg. Tender Notice for 100 KWp SOLAR PHOTOVOLTAIC POWER PLANT ON THE ROOF TOP OF VIDYUTH NILAYAM, APSPDCL



Each roof tile produces up to 10 Watt-peak (Wp) of power. "Since the entire roof can be used to generate solar power, the energy yield is at least the same as with a classic solar panel system on the roof", says Jacco Venema. Moreover, integrating the solar energy system into the roof also increases the value of the property.



Of course, there are many assumptions that we used that differ for every solar panel system. One of the major difference-makers is geographic location, which directly impacts the hours of quality sunlight your solar panel system will get. We used 5 hours per day as our average above???here's how that number (and our end estimate) changes geographically, while ???



Calculating solar generation potential. We use the following assumptions to calculate solar generation potential in an ideal scenario: 850 square feet of usable roof space for solar: The average U.S. roof is about 1,700 square feet. You should never put panels on northern roof planes. So with a north/south roof, that gives you 850 square feet.



Apply now! avail subsidy and many other benefits.. ??? Environment friendly and sustainable power generation ??? 5 Years warranty ??? Electricity bill reduction ??? Easy and stress-free tracking of online application process ??? Quality Assurance and Hassle-free interconnection to grid . For applying