

ARE THE WAGES FOR WIND POWER PLANTS UNDER CONSTRUCTION HIGH



How many new wind power jobs can be created in 2021? 29 April 2021, Brussels ??? New analysis by the Global Wind Energy Council (???GWEC???) shows that 3.3 million new wind power jobs can be created globally over the next five years thanks to major industry expansion.



How many jobs are there in the wind industry? With 751 GW of wind power capacity already installed, the wind industry has generated nearly 1.2 million jobs globally to date according to the International Renewable Energy Agency. The world???s leading wind energy countries are home to hundreds of thousands of direct jobs in the wind industry.



Does wind energy create more jobs than photovoltaic energy? According to Comings et al. , wind energy also leads to less O&M jobs than photovoltaic energy. Maia et al. concluded that South Africa???s New Growth Path program would lead to approximately 6.5 direct jobs/MW. Throughout the assessed reports, two measures are used: jobs/MW [16,38] and jobs/\$1 million in spending [42,45].



Will offshore wind energy create more jobs? Onshore is presently the main sources of wind energy and employment, but not necessarily in the near future. Bilgili, Yasar, and Simsek estimate employment in offshore wind energy to bypass onshore employment by year 2025 and that offshore wind farms will contribute to more jobs per MW than their onshore counterparts.



How can we maximise on excess wind energy? There are a number of ways that we can maximise on excess wind energy: In order for homes and businesses to use cleaner, greener energy, more renewables ??? such as wind power and solar power ??? will need to be connected to the electricity grid.

ARE THE WAGES FOR WIND POWER PLANTS UNDER CONSTRUCTION HIGH



How many jobs will a 470 GW wind project create? GWEC Market Intelligence forecasts that an additional 470 GW of new onshore and offshore wind capacity will be installed around the world between 2021-2025. Based on existing job creation calculations, this surge in new capacity can generate 3.3 million sustainable and long-term jobs over the course of 25-year project lifetimes.



Comparing wage data by job type. The highest wage category in the energy industry is in electricity generation and power plant operations. Regardless of the energy source, the pay is similar between fossil fuels and renewables, with ???



How much does a Power Plant Operator I make hourly in the United States? The average hourly wage for a Power Plant Operator I in the United States is \$34 as of April 24, 2024, but the range typically falls between \$29 and \$42. Hourly rate can vary widely depending on many important factors, including education, certifications, additional skills, the number of years you have ???



The past few years have seen ample warnings about the role of natural gas in our energy systems from both a climate and an energy security point of view. Nevertheless, a new data investigation from Energy Monitor shows that hundreds of gigawatts (GW) of new gas-fired power capacity are under construction or planned around the world.. The ever-diminishing ???



The model is based on a 42 MW wind power plant, for which an optimal electrolyzer of 10 MW was calculated based on the 2500 equivalent full load hours per year and the projection of electricity

ARE THE WAGES FOR WIND POWER PLANTS UNDER CONSTRUCTION HIGH



In terms of energy, in 2022, the total annual energy production reached 56,084.20 GWh, of which 50.8% came from hydropower plants, 43.0% from natural gas thermal power plants, 3.4% from wind power plants, 1.5% from solar power plants, 0.6% from biomass power plants, 0.5% from Diesel2/Residual500/Residual 6 thermal power plants, and 0.2% from ???



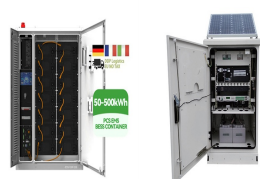
Zucatelli P et al. perform wind power forecasting and wind power ramps at different heights (81.8 m, 100 m, 101.8 m, 120 m, and 150 m; which are the heights where the anemometers of the wind farms are located) in tropical and subtropical areas of Brazil and Uruguay. The good results obtained suggest that the proposed method can be used as a tool ???



The results show that Mexico has great wind power potential with practically the entire country enjoying more than 1700? h of useful wind per year and the potential to generate over 2000? kW of



Hybrid offshore wind???solar PV power plants have attracted much attention in recent years due to its advantages of saving land resources, high energy efficiency, high power generation efficiency, and stable power output. However, due to the project still being in its infancy, investors will face a series of risks. Hence, a multi-criteria group decision-making ???



The high efficiency of geothermal projects is due to the fact that heat is not generated, but simply transferred. High initial investment in exploration and construction, which usually means at least 5-8 years for the project to pay off.

ARE THE WAGES FOR WIND POWER PLANTS UNDER CONSTRUCTION HIGH

The objective of this paper is to assess the wind energy resource in the central region of Thailand for wind power generation, along with analyzing the economic feasibility and appropriate feed-in



The Impofu Wind Power Farms Complex (IWPFC), is a cluster of three wind power plants under construction in South Africa. The power stations together with the associated high-voltage substations and 120 kilometres (75 mi) of 132 kV overhead power lines are expected to generate 330 MW of power.



instance, areas with high rates of wind speeds are not necessarily suitable for wind farms, such as 59 lakes and roads [16], for this reason, they are addressed as restrictive areas in this study.



In 1998, the British Wind Energy Association (now RenewableUK) began discussions with the government to draw up formal procedures for negotiating with the Crown Estate, the owner of almost all the United Kingdom coastline out to a distance of 12 nautical miles (22.2 km), to build offshore wind farms. The result was a set of guidelines published in 1999, to build ???



This paper presents a new economic profitability model for a power-to-gas plant producing green hydrogen at the site of an existing wind power plant injected into the gas grid. The model is based on a 42 MW wind power plant, for which an optimal electrolyzer of 10 MW was calculated based on the 2500 equivalent full load hours per year and the projection of ???



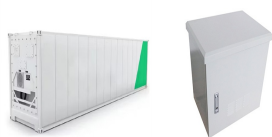
ARE THE WAGES FOR WIND POWER PLANTS UNDER CONSTRUCTION HIGH



Source: Turkish Wind Energy Association; January 2021 Report. In addition, 41 wind farms within the significant capacity of 1.872,13 MW are still under construction¹. The top 5 companies in the wind power plants under construction are respectively; RT Energy, Fina Energy, T?rkerler, Erciyes Anadolu Holding and Sanko Energy.



The nuclear power plant needs to be deployed with the growth rate of 10.5% per year from 2010 to 2050 to replace the fossil fuel power plants, but this high growth rate will result in all the energy produced from nuclear power plants utilized for its new construction.



In general, wind energy potential can be affected by multiple environmental factors including the location of wind resource measurement, wind speed (m / s) at height of wind turbine hub, turbulence intensity (the ratio of standard deviation of fluctuating wind velocity to mean wind speed), air power density (k g / m ³) where the turbine system is located, wind ???



924-Megawatt Sunrise Wind to Power Approximately 600,000 Homes Once Completed "Today's groundbreaking marks the start of construction on Sunrise Wind???New York's largest job-creating and clean-energy producing offshore ???

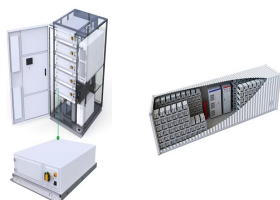


In the fall of 2018, ?rsted sold 50% of the power plant under construction to Global Infrastructure Partners (GIP) for 5 billion euros. This offshore power plant has 174 Siemens Gamesa SWT-7.0-154 wind turbines. Hornsea One covers an area of about 407 square kilometers and is located 120 km off the coast of England. Due to the high wind

ARE THE WAGES FOR WIND POWER PLANTS UNDER CONSTRUCTION HIGH



Solar power plant design; Solar power plant construction; Solar thermal power plant construction; Solar power plant modernization; Wind Farms. Back; Wind Farms; Financial model of the wind farm project; Wind farm project financing; ???



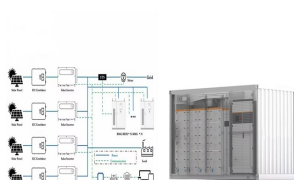
The lifetime limits for both 2 °C and 1.5 °C are reduced by 5 years if plants under construction come online and 10 years if all proposed projects are built. A plant-by-plant strategy for



Wind farm construction; Wind power plant modernization; Electrical Substations. Back; where high-tech solar and wind projects are being implemented. insufficient coordination of this particular issue is often the reason for the ???



key issue is the expected economic life of wind farm assets. Under the Renewables Obligation a wind farm was a bond-like asset for 20 years with revenue risk primarily determined by wind conditions and yield performance over time. The period of relatively secure ??? and high ??? levels of



Planning and wind power construction. In principle, the same rules apply to the construction of wind power plants as to other construction. As a rule, the implementation of large wind farms should be based on the Land Use and Building Act, which means that sites suitable for wind turbines are specified in the land use plan.

ARE THE WAGES FOR WIND POWER PLANTS UNDER CONSTRUCTION HIGH



The wind energy, or wind power, industry focuses on the design, development and implementation of wind turbines as a renewable energy resource. This energy source relies on wind power rotating turbines, which create electrical power. Construction laborer National average salary: \$49,871 per year Primary duties: Construction laborers help



For example, wind and solar jobs are tallied only within the utility sector and not in manufacturing wind and solar components. Nevertheless, the high wages in renewable electricity generation are an encouraging sign that ???