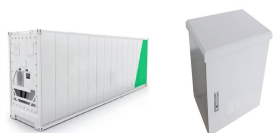


ARE THERE 700 PV PANELS



There are nine main types of solar panels: monocrystalline, polycrystalline, thin film, transparent, Concentrator Photovoltaics (CPV), Passivated Emitter and Rear Contact (PERC), perovskite, solar tile, and solar ???



W panel generates over 2800Wh of electricity per day (with 4 hours of direct sunlight). Rugged Design 3.5 cm aluminium frame and IP68-rated junction box protects against the elements. Mechanical performance tested to withstand 5400 Pa snow and 2400 Pa wind loads. All panels have an expected performance lifetime of 25 years. Easy



In the example you see above, there's an "Output Tolerance" rating of -3% to 3%. This means that, under ideal conditions, the 100W solar panel could generate between 97 and 103 Watts of power. In a PV system, solar panels are interconnected in series or parallel configurations to increase power output and achieve the desired voltage



The best residential solar panels you can buy in 2024 1. SunPower Maxeon 6 AC: The best solar panels for UK homes. Price when reviewed: From around ?350 exc. installation (per panel) | Find out more at SunPower If you live in a small terraced house with limited roof space, overcast skies and seasonal leaf fall (basically, you live in the UK), ???



Over recent years, a battle emerged to develop the world's most powerful solar panel, with many manufacturers developing panels rated well over 600W while others are fast-tracking next-gen large format panels, rated at ???



Note: You can allow for up to a 5% difference in both length and width due to different solar panel manufacturers producing PV panel sizes that vary a bit from these averages. In the 4th column there, you can see the calculated solar panel square footage as well. Here are a few examples of

ARE THERE 700 PV PANELS

the dimensions of the most popular solar panel wattages:

ARE THERE 700 PV PANELS



kWh per 1 kWp per annum. ??? The amount of electricity produced over the course of a year will be determined by the orientation of the Solar PV panels are possibly required where there are special planning conditions that require an additional reduction over the TER or a percentage of energy to be generated



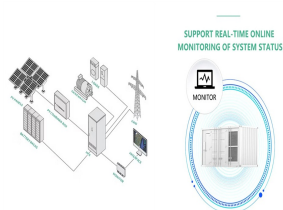
There are three wiring types for PV modules: series, parallel, and series-parallel. There is a solar panel wiring combining series and parallel connections, known as series-parallel. This connection wires solar panels in series by connecting positive to negative terminals to increase voltage and connects these strings in parallel. All solar



In the last decade alone, PV panel installations have seen a 40% to 45% increase around the world. But even today there is no definite answer for how large solar panels are, because the answer varies. The same ???



Under typical UK conditions, 1m² of PV panel will produce around 100kWh electricity per year, so it would take around 2.5 years to "pay back" the energy cost of the panel. PV panels have an expected life of least 25 to 30 years, so ???



There are a variety of different solar panel dimensions and solar panel sizes in the UK, depending on the manufacturer and panel type. There isn't a one-size/dimension-fits-all solution. While that makes things more complicated, it means you have more flexibility in choosing how and where you want to use your solar panels.



3 Description of your Solar PV system Figure 1 ??? Diagram showing typical components of a solar PV system The main components of a solar photovoltaic (PV) system are: Solar PV panels ??? convert sunlight into electricity. Inverter ??? this might be fitted in the loft and converts the

ARE THERE 700 PV PANELS

electricity from the panels into the form of electricity which is used in the home.

ARE THERE 700 PV PANELS



The panel manufacturer's datasheet will tell you how long the warranty is and how much electricity you can expect each panel to generate. Impact on house value. In 2021 Solar Energy UK published their report (The Value of Solar Property) on the increase in sale price of homes fitted with a solar PV system compared to those without. Their



Domestic batteries are typically used alongside solar photovoltaic (PV) panels. But it can also be used to store cheap, off-peak electricity from the grid, which can then be used during peak hours (16.00 to 20.00). 336 (700-364) Simple payback : 12 years: (assuming there is no solar PV installed). A standard tariff of 34p/kWh



The race to produce the most efficient solar panel heats up. Until mid-2024, SunPower, now known as Maxeon, was still in the top spot with the new Maxeon 7 series. Maxeon (Sunpower) led the solar industry for over a ???



The new UKSOL 700W N-Type bifacial solar PV module is designed to capture sunlight from both sides, increasing its energy output significantly. It features an innovative N-Type semiconductor technology that ???



"The UKSOL 700W N-Type bifacial solar PV module is a game-changer, offering a highly efficient and durable solution for renewable energy applications." The UKSOL 700W N-Type bifacial solar PV module is ideal for large-scale solar projects, as well as for residential and commercial installations.



Note: Solar panel options parameters may vary depending on differences in quality, manufacturing processes and market conditions. There are 2 methods to divide the PV panels, as mentioned below: Generations ??? This ???

ARE THERE 700 PV PANELS



Solar panel size is one of the secrets to getting the best return on your solar investment. It's not as obvious a factor as the overall size of your solar PV system, but the size of each individual solar panel helps to determine whether they fit your roof safely, stand up to the elements and look the way you want them to.. Solar panels come in a surprising range of sizes that make them



The sun provides an abundant source of clean, renewable energy. This can be converted into electricity using solar photovoltaic panels, known as "solar PV", installed on your roof. This electricity can power your home, save you money, and ???



Angebote Solarmodule monokristallinen, bifaziale, Solarzellen, Jedes PV-Modul zeichnet sich durch besondere Leistungsstärke und hohe Erträge der Premium Hersteller aus. Solarpanel



The solar panel connector is used to interconnect solar panels in PV installations. Their main task is ensuring power continuity and electricity flow throughout the whole solar array. There are many types of solar connectors in the market, but the most popular option available is the MC4 connector.



Now you can just read the solar panel daily kWh production off this chart. Here are some examples of individual solar panels: A 300-watt solar panel will produce anywhere from 0.90 to 1.35 kWh per day (at 4-6 peak sun hours locations).; A 400-watt solar panel will produce anywhere from 1.20 to 1.80 kWh per day (at 4-6 peak sun hours locations).; The biggest 700 ???

ARE THERE 700 PV PANELS



In particular, there are solar panel kits for caravans that come with solar panels that are around four times smaller than the average. For example, instead of the typical 2-meter solar panel, they are around 0.5 metres. What size solar panels do ???



700 watt solar panels. The primary advantage of 700-watt solar panels is their ability to generate more electricity compared to lower wattage panels. It's an ideal choice for large solar projects, such as commercial projects and solar farms. A 700-watt solar panel can make the most of the available sunlight and harness more energy.



Commercial solar panels are larger modules traditionally made with 72 cells but now made with 144 half-cut cells. These panels have a larger footprint, measuring around 7.40 feet by 3.72 feet in size. Many companies are crossing the 600-watt mark, and some even inching close to 700 watts with the use of TOPCon solar cells. Calculate the