

ASSEMBLY DIAGRAM OF GREENHOUSE SOLAR BRACKET



What should I know before assembling my new greenhouse? se.Before you begin:Before assembling your new greenhouse,please check that all parts in the provid d lists are included. Please take each bundle out of the packaging in order to iden ify the parts better.The part lists are sorted according to the carton in whi h they are delivered. It is important that the opened bundles do not get m



How do you attach a greenhouse to a steel base? Attach the Assembled Frame to the Base If you have purchased a steel Halls base,attach the assembled frame to this using the included J-clips. Slide the curved section of the J-clip underneath the base and attach the greenhouse as shown in the instructions. Note that some models may require additional fastening of the greenhouse.



Can I assemble a greenhouse by myself? Although it is possible to assemble the greenhouse by yourself,two are better than one,especially when assembling the end and side sections. For your specific greenhouse,please follow the installation instructions.



What accessories do I need for my amateur greenhouse? Alton have a range of accessories which will add extra benefits to your new Amateur greenhouse. Alton Cladding is an ???instant fit??? cedar wood cladding which simply clips over the outside of the greenhouse. Cladding to staging height gives maximum heat retention in winter and extra shade in the summer.



How do you fit shelving in a greenhouse? The stop end should finish level with the gable end of the greenhouse. High Level Shelving The high level shelving can be fitted to either side of the greenhouse. To locate the brackets for the high level shelf measure 131/2???/345mm down from the top of the side panel at each glazing bar and gable ends. See fig 2.

ASSEMBLY DIAGRAM OF GREENHOUSE SOLAR BRACKET



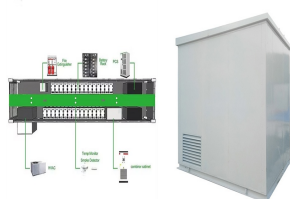
How do you replace a slat on a greenhouse shelf? Hold the shelf in position and mark the length- centre of both the brace and double bracket. With a spirit level, ensure the shelf is level. Offer up the support bracket and secure with two 3/4"/ 19mm No.8 csk. screws. Hint: Replacing the removed slat finishes off the overall good looks of the greenhouse.



To keep your greenhouse entirely self-sustaining, you can get solar-powered ventilation systems. Our MONT Solar Powered Ventilation System runs through a deep-cycle marine battery to keep air flowing throughout the year.. Insulation. Adequate insulation, including insulation panels or curtains, is necessary to minimize heat loss during colder months.



Page 1 6 SERIES SINGLE DOOR GLASSHOUSE ASSEMBLY INSTRUCTIONS Phone: 0508 333 654 / 03 479 9224; Page 2 GLASSHOUSE LAYOUT DIAGRAM Throughout this instruction booklet and in the boxes of parts you have received you will find these colours used to show which end and side your parts are.; Page 3 FRONT WALL LAYOUT; Page 4 REAR WALL



View and Download Winter Gardenz PG0812H assembly manual online. 8x12 Greenhouse. PG0812H greenhouse kit pdf manual download. Using the 2x W03B brackets with the Using a W04A (bracket) with M01/S04 nuts M01/S04 nuts and t-head bolts, attach and t-head bolts attach the top of the L502- the L603-1210 to the L603R-2000 and 1960 to the L603



Mounting Feet (108500) Layout Diagram Buildings equipped with the 108500 mounting feet require additional steps for the site preparation. Consult the Mounting Feet Layout diagram in the Quick Start section near the back of this guide for the required dimensions. Do not prepare the site without first consulting the diagram for the proper dimensions!

ASSEMBLY DIAGRAM OF GREENHOUSE SOLAR BRACKET



4. Keep assembly area clean and well lit. 5. Keep bystanders out of the area during assembly. 6. Do not assemble when tired or when under the influence of alcohol, drugs or medication. 7. Product capabilities apply to properly and completely assembled product only. 8. Locate the Greenhouse on a flat, level, surface. A concrete foundation is



Download scientific diagram | (a) Location of the Honghua solar park in the Songnen Grassland, Northeast China. (b) Three experimental zones of Ambient (the reference zone outside the PV arrays



Main Frame Assembly MAIN FRAME ASSEMBLY Diagrams on this page show one way to assemble the main frame. Brackets (115918) used to anchor frame to concrete floor, attached to end leg assemblies, are shown. Install these now or wait until bench is fully assembled and positioned in the desired location. Additional assistants are needed for easier



With the continuous advancement of solar technology, CHIKO 's PV brackets will be continuously optimized to provide you with more reliable and efficient energy solutions. ??? ,???



10" Wide Evolution Cedar Greenhouse Assembly Instructions Contents: Introduction Base Preparation Overview Base Assembly Side Assembly Rear Assembly Front Assembly Roof Assembly (HE300), diagram 1. The base brackets should always be positioned either side of the door, in the corners, in the middle of the rear and equally spaced down the

ASSEMBLY DIAGRAM OF GREENHOUSE SOLAR BRACKET



Learn how to build a lean-to greenhouse with step-by-step instructions, diagrams, and photos. This guide covers everything you need to know, from choosing the right location and materials to constructing the frame and planting your crops. There are a variety of ways to heat a greenhouse, including: Solar heating: Solar heating is the most



roof vent assembly 26 - 29 main building assembly 30 - 31 louvre assembly 32 glass plan 33 glazing 34 - 39 final fixing note: all diagrams are coded. if the diagram is viewed from the outside the alphabetical reference box is black with white lettering: if the diagram is viewed from the inside then the reference box is clear



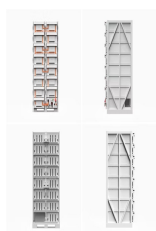
This is a copy of our Lean-To greenhouse base plan. Dimensions shown are all external and allow for a small overhang, (as shown in the diagram at the foot of the page) suitable for brick or concrete perimeter bases. Lean-To Greenhouse Base Plan It would be useful to read at least the following introduction before attempting to assemble any parts.



- 1. RAMP/OUTDOOR CABINET
- 2. OUTDOOR CABINET WITH AIR CONDITIONING
- 3. OUTDOOR BATTERY STORAGE CABINET
- 4. 10 KVA



GREENHOUSE Assembly Instructions for models 68 ? 610 ? 612 03/07 Renaissance BEFORE OPENING ANY OF THE BOXES PLEASE READ THESE INSTRUCTIONS. 2 Ridge Bracket as shown in diagram 14, 15 and tighten. Note: Ensure there is room to fit the "square" roofing glazing bar adjacent to the bracket. It may be worth



Download scientific diagram | Solar collector assembly from publication: Concentrating Solar Power (CSP) and its prospect in Bangladesh | Concentrating Solar Power (CSP) is a promising technology

ASSEMBLY DIAGRAM OF GREENHOUSE SOLAR BRACKET



GREENHOUSE BENCH STK# DIMENSIONS 117500R4X30 4" x 30"
Rolling Tabletop Greenhouse Bench Main Frame Assembly MAIN
FRAME ASSEMBLY Diagrams on this page show one way to assemble
the main frame. Brackets (115918) used to anchor frame to concrete floor,
attached to end leg assemblies, Install long side rail tubes flush with end
of brackets



When it's assembled and installed, it looks like this (standing inside the
greenhouse.) But there's a problem???let's call it a Bad Design Alert! The
instructions tell you to fasten both ends of this Rear Brace assembly to
???



8" Wide Evolution Cedar Greenhouse Assembly Instructions Contents:
Introduction Base Preparation Overview Base Assembly Side Assembly
Rear Assembly Front Assembly Roof Assembly (HE300), diagram 1. The
base brackets should always be positioned either side of the door, in the
corners, in the middle of the rear and equally spaced down the



??? Decide on a greenhouse location. An optimal location should be level,
well-lit, and sheltered from wind. The greenhouse door should not open
towards prevailing winds, if possible. ??? Greenhouse must be properly
supported by a foundation prior to assembly to prevent property damage
and injury in the event of strong winds or inclement weather.



before assembling your greenhouse. Diagrams in a single frame show the
view from inside the green-house. Diagrams in a double frame show the
view from outside the green-house. 010.01.1304 3 Before beginning the
assembly of your new greenhouse, please check that all parts in the
following part lists are included. Please take each bundle out

ASSEMBLY DIAGRAM OF GREENHOUSE SOLAR BRACKET



Grandio Ascent Greenhouse Assembly Manuals >> Download: Grandio Ascent 8x8 Manual >> Download: Grandio Ascent 8x12, 8x16, Frame to Base Anchoring Bracket Placement Diagrams for Grandio Models >> Download: Louver Window Assembly & Installation Grandio Solar Roof Ventilation Fan >> Link:



Greenhouse Assembly Instructions Contents: Introduction Base Preparation Overview Base Assembly Front Assembly Door Gable Assembly Plain Gable Assembly the base brackets (D174M), diagram 2. NB. For Extensions refer to a separate manual. E V 2 8 7 M E V 0 2 9 EV0311M 6M Diagram 3 Internal Base Parts Part Name Part Number