

# AZIMUTH ENERGY UNITED KINGDOM



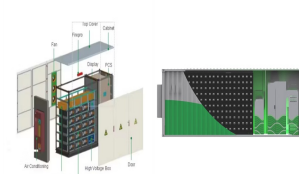
July Weather in London United Kingdom. Daily high temperatures increase by 3°F, from 71°F to 74°F, rarely falling below 63°F or exceeding 84°F.. Daily low temperatures increase by 2°F, from 58°F to 60°F, rarely falling below 53°F or exceeding 65°F.. For reference, on July 31, the hottest day of the year, temperatures in London typically range from 60°F to 74°F, while on February 7



Prior to joining Azimuth he held the position of Drilling NPI Leader at GE, where he directed development and engineering of the Tensor, Orienteer, Bluestar and Ultima product offerings. These companies were sold in 2004 to Sondex. Mr. Moorley has retained involvement in the energy sector through his chairmanship of HRH Ltd. and is also a



On November 8, 2005, private equity firms 4D Global Energy Advisors, Azimuth Capital Management, Warburg Pincus and Riverstone Holdings acquired oil/gas exploration company Fairfield Energy for 200M USD Warburg Pincus" 9th and Riverstone Holdings" 1st transaction in the United Kingdom. M& A Deal Summary; Date: 2005-11-08: Target



Azimuth Energy op?re en Afrique de l'Ouest, b?n?ficiant de ressources solaires abondantes pour ses projets de d?veloppement et de gestion de projets solaires photovolta?ques. Azimuth Energy. Villa N? 15, Cit? des 16 villas, Hamdallaye ACI 2000, BPE87, Bamako - Mali.



Azimuth Energy Partners III U.S is an oil and gas fund managed by Azimuth Capital Management. The fund is located in Calgary, Alberta and invests in the United States. The fund targets energy sector and oil and gas asset class.

# AZIMUTH ENERGY UNITED KINGDOM



Where is Azimuth Energy 's headquarters? Azimuth Energy is located in St Louis, Missouri, United States. Who invested in Azimuth Energy? Azimuth Energy is funded by Oakland Capital Partners. When was the last funding round for Azimuth Energy? Azimuth Energy closed its last funding round on Aug 6, 2019 from a Private Equity round.



Winter Weather in London United Kingdom. Daily high temperatures are around 48°F, rarely falling below 38°F or exceeding 57°F. The lowest daily average high temperature is 47°F on January 18.. Daily low temperatures are around 40°F, rarely falling below 30°F or exceeding 50°F. The lowest daily average low temperature is 39°F on February 7.. For reference, on July ???

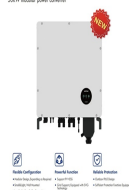
## Commercial and Industrial ESS

- Air Cooling / Liquid Cooling
- Budget Friendly Solution
- Versatile Energy Integration
- Modular Design for Flexible Expansion



A wet day is one with at least 0.04 inches of liquid or liquid-equivalent precipitation. The chance of wet days in Settle varies throughout the year. The wetter season lasts 6.0 months, from August 7 to February 6, with a greater than 35% chance of a given day being a wet day. The month with the most wet days in Settle is November, with an average of 12.7 ???

## 200KW modular power converter



A wet day is one with at least 0.04 inches of liquid or liquid-equivalent precipitation. The chance of wet days in Portsmouth varies throughout the year. The wetter season lasts 4.4 months, from September 25 to February 8, with a greater than 27% chance of a given day being a wet day. The month with the most wet days in Portsmouth is November, with an average of 10.2 days with ???



March Weather in Manchester United Kingdom. Daily high temperatures increase by 4°F, from 48°F to 52°F, rarely falling below 41°F or exceeding 60°F.. Daily low temperatures increase by 2°F, from 38°F to 40°F, rarely falling below 31°F or exceeding 47°F.. For reference, on August 1, the hottest day of the year, temperatures in Manchester typically range from 56°F to 69°F, ???

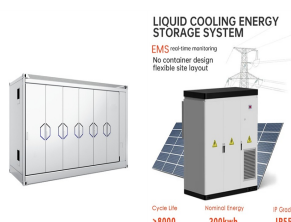
# AZIMUTH ENERGY UNITED KINGDOM



A wet day is one with at least 0.04 inches of liquid or liquid-equivalent precipitation. The chance of wet days in Durham varies throughout the year. The wetter season lasts 5.7 months, from August 6 to January 29, with a greater than 27% chance of a given day being a wet day. The month with the most wet days in Durham is November, with an average ???



Azimuth V Evolution Fund is an oil and gas fund managed by Azimuth Capital Management. Azimuth Energy Partners. Native Currency. USD. Fund Manager's Location. Centennial Place East 3110; United Kingdom; Asia-Pacific Headquarters. 80 Raffles Place #41-01 UOB Plaza 1; Singapore 048624; Contact Us



The average daily incident shortwave solar energy in Yorkshire Dales National Park is increasing during the winter, rising by 1.2 kWh, from 0.5 kWh to 1.7 kWh, over the course of the season. The lowest average daily incident shortwave solar energy during ???



January Weather in London United Kingdom. Daily high temperatures are around 47°F, rarely falling below 38°F or exceeding 56°F. The lowest daily average high temperature is 47°F on January 18.. Daily low temperatures are around 40°F, rarely falling below 30°F or exceeding 49°F.. For reference, on July 31, the hottest day of the year, temperatures in London typically ???



A wet day is one with at least 0.04 inches of liquid or liquid-equivalent precipitation. The chance of wet days in St Ives varies throughout the year. The wetter season lasts 4.8 months, from October 2 to February 23, with a greater than 34% chance of a given day being a wet day. The month with the most wet days in St Ives is November, with an average of 12.8 days with at least 0.04 ???

# AZIMUTH ENERGY UNITED KINGDOM



Summer Weather in Liverpool United Kingdom. Daily high temperatures are around 65°F, rarely falling below 55°F or exceeding 77°F. The highest daily average high temperature is 68°F on August 1.. Daily low temperatures increase by 4°F, from 50°F to 54°F, rarely falling below 45°F or exceeding 61°F. The highest daily average low temperature is 56°F on July 30.



May Weather in London United Kingdom. Daily high temperatures increase by 5°F, from 61°F to 66°F, rarely falling below 52°F or exceeding 76°F.. Daily low temperatures increase by 6°F, from 47°F to 53°F, rarely falling below 40°F or exceeding 59°F.. For reference, on July 31, the hottest day of the year, temperatures in London typically range from 60°F to 74°F, while on February 7



Find company research, competitor information, contact details & financial data for AZIMUTH PRINT LIMITED of BRISTOL. Get the latest business insights from Dun & Bradstreet. AZIMUTH PRINT LIMITED. D& B Business Directory HOME / BUSINESS DIRECTORY / MANUFACTURING / PRINTING AND RELATED SUPPORT ACTIVITIES / UNITED KINGDOM / BRISTOL / ???



A wet day is one with at least 0.04 inches of liquid or liquid-equivalent precipitation. The chance of wet days in Lerwick varies throughout the year. The wetter season lasts 6.7 months, from September 5 to March 27, with a greater than 36% chance of a given day being a wet day. The month with the most wet days in Lerwick is January, with an average of 15.0 days with at least ???



December Weather in Glasgow United Kingdom. Daily high temperatures decrease by 2°F, from 45°F to 43°F, rarely falling below 34°F or exceeding 53°F.. Daily low temperatures are around 34°F, rarely falling below 22°F or exceeding 46°F.. For reference, on July 30, the hottest day of the year, temperatures in Glasgow typically range from 52°F to 66°F, while on January 1, the ???

# AZIMUTH ENERGY UNITED KINGDOM



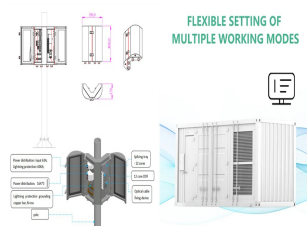
Winter Weather in London United Kingdom. Daily high temperatures are around 48°F, rarely falling below 38°F or exceeding 57°F. The lowest daily average high temperature is 47°F on January 18.. Daily low temperatures are around 40°F, ???



Azimuth Energy se sp?cialise dans le d?veloppement, la gestion et la maintenance de projets solaires photovolta?ques en Afrique de l'Ouest. Nous fournissons des solutions pour l'?lectrification des zones rurales, des entreprises mini?res, agro-industrielles et ???



September Weather in Edinburgh United Kingdom. Daily high temperatures decrease by 5°F, from 63°F to 58°F, rarely falling below 53°F or exceeding 69°F.. Daily low temperatures decrease by 4°F, from 50°F to 46°F, rarely falling ???



Azimuth Energy Partners: Investor: Principal & Manager, Investor Reporting: Mountain View, CA: PE/Buyout: 0000-00-00: Cherry Ma Lead Partner on Deals (3) Company Deal Date Portsmouth, United Kingdom: Fund Team Members (6) Name Investor Fund Fund Location; Francesco Mele: Azimuth Energy Partners: KERN Energy Partners III: Mountain View, CA:



We are a skilled and experienced team of engineers and constructors ??? building solar-energy, energy storage, and energy efficiency projects that help our clients reduce fossil-fuel consumption, lower OpEx, improve the financial bottom line, ???