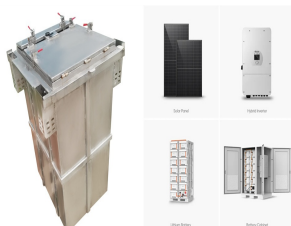


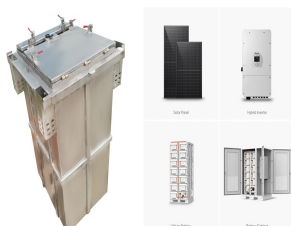
BATTERY ENERGY STORAGE LIFE IS SHORT



What is battery storage? Battery storage is a technology that enables power system operators and utilities to store energy for later use.



How long does a battery storage system last? For example, a battery with 1 MW of power capacity and 4 MWh of usable energy capacity will have a storage duration of four hours. Cycle life/lifetime is the amount of time or cycles a battery storage system can provide regular charging and discharging before failure or significant degradation.



What are battery energy storage systems? Battery energy storage systems (BESSs) are a key component to transitioning to clean energy capture and usage, enhancing grid stability, and promoting sustainability. Multiple battery chemistries and technologies are emerging to meet the growing demand for short- and long-duration storage requirements.



What is battery storage & why is it important? Battery storage is one of several technology options that can enhance power system flexibility and enable high levels of renewable energy integration.



Can battery energy storage power us to net zero? Battery energy storage can power us to Net Zero. Here's how |World Economic Forum The use of battery energy storage in power systems is increasing. But while approximately 192GW of solar and 75GW of wind were installed globally in 2022, only 16GW/35GWh (gigawatt hours) of new storage systems were deployed.

BATTERY ENERGY STORAGE LIFE IS SHORT



Is battery energy storage a new phenomenon? Against the backdrop of swift and significant cost reductions, the use of battery energy storage in power systems is increasing. Not that energy storage is a new phenomenon: pumped hydro-storage has seen widespread deployment for decades. There is, however, no doubt we are entering a new phase full of potential and opportunities.



Nevertheless, lead-acid offers poor energy density and has short life cycle [24]. Li-ion and NaS BES technologies are well known with high power density. Battery energy storage (BES) consists of many batteries connected in series???parallel combination to produce required power for the application. Batteries are cost effective and can store



In a paper recently published in Applied Energy, researchers from MIT and Princeton University examine battery storage to determine the key drivers that impact its economic value, how that value might change with increasing deployment over time, and the implications for the long-term cost-effectiveness of storage. "Battery storage helps make



Over -heating or internal short circuit can also ignite the electrolyte and cause fire. 1.Battery Energy Storage System (BESS) -The Equipment 2.Applications of Energy Storage 3.Solar + Storage 4 merical and Industrial Storage (C& I) 5 gmentations 27.



BATTERY LIFE AND ENERGY STORAGE FOR 5G . Smartphones have become an essential device for many, but they are limited by short battery life due to high data rates, big displays, and diverse

BATTERY ENERGY STORAGE LIFE IS SHORT



Battery energy storage enables the storage of electrical energy generated at one time to be used at a later time. This simple yet transformative capability is increasingly significant. The need for innovative energy storage becomes vitally important as we move from fossil fuels to renewable energy sources such as wind and solar, which are



AbstractThe grid-scale battery energy storage system (BESS) plays an important role in improving power system operation performance and promoting renewable energy integration. Early Prediction of Remaining Useful Life for Grid-Scale Battery Energy Storage System. Authors: Da Lin, Ph Fei Xia, Xiang Chen, Jiajun Chen, Short-Term ???



Participation rates fall below 10% if half of EV batteries at end-of-vehicle-life are used as stationary storage. Short-term grid storage demand could be met as early as 2030 across most regions



An electric battery is a source of electric power consisting of one or more electrochemical cells with external connections [1] for powering electrical devices. When a battery is supplying power, its positive terminal is the cathode and its negative terminal is the anode. [2] The terminal marked negative is the source of electrons. When a battery is connected to an external electric load



??? Utility-scale battery energy storage system (BESS) Energy Power Safety Life Cost Battery rack WHITE PAPER 11 Rated short-time withstand current for 1s, Icw (kA) 3 6 19.2 Versions F F F Standard terminals F F F Mechanical life (No. Operations) 7,500 7,500 20,000

BATTERY ENERGY STORAGE LIFE IS SHORT



Rallo et al. [13] have modelled the battery ageing in a 2nd life battery energy storage system in the energy arbitrage market in Spain. The modelled BESS of 200 kWh and 40 kW had one charging and discharging cycle per day for four hours each.

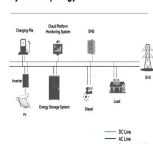


Expiration as applied to energy storage devices does not mean the same as its application to food items. Shelf life is the length of time your disposable battery will retain its charge unused, or in the case of rechargeable batteries, how long before it will require a charge or is considered spent. The flow of excess current in a short

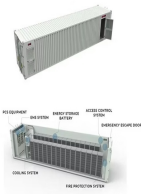


Many options exist with multiple battery chemistries available for home energy storage. Bottom line, however, is that in the United States two brands dominate the space. More than 90% of the market is served by LG Chem and Tesla Powerwall, which are lithium-ion batteries, according to LBL.

System Topology



By installing battery energy storage system, renewable energy can be used more effectively because it is a backup power source, less reliant on the grid, has a smaller carbon footprint, and enjoys long-term financial benefits. Short life cycle due to deep discharge (iii) Low self-discharge (1???3% per month)



Battery Energy Storage Systems (BESS) Definition. A BESS is a type of energy storage system that uses batteries to store and distribute energy in the form of electricity. Flywheels are typically used for short-term storage applications, such as load leveling or backup power generation. Advantages of BESS.



Among the existing electricity storage technologies today, such as pumped hydro, compressed air, flywheels, and vanadium redox flow batteries, LIB has the advantages of fast response rate, high energy density, good energy efficiency, and reasonable cycle life, as shown in a

BATTERY ENERGY STORAGE LIFE IS SHORT

quantitative study by Schmidt et al. In 10 of the 12 grid-scale

BATTERY ENERGY STORAGE LIFE IS SHORT



Battery Energy Storage Systems (BESS) play a fundamental role in energy management, providing solutions for renewable energy integration, grid stability, and peak demand management. In order to effectively run and get the most out of BESS, we must understand its key components and how they impact the system's efficiency and reliability.



Additionally, battery energy storage can defer costly grid infrastructure upgrades by optimizing the use of existing assets, ultimately facilitating more efficient and cost-effective integration of renewable energy sources onto the grid. Both short and long-duration energy storage solutions will be needed for renewable integration.



What is grid-scale battery storage? Battery storage is a technology that enables power system operators and utilities to store energy for later use. A battery energy storage system (BESS) is an electrochemical device that charges (or collects energy) from the grid or a power plant and ???



Lithium-ion batteries are vital for powering many modern technologies. To ensure their effective use and optimal performance, it is essential to understand their lifespan, which can be divided into three key categories: cycle life, calendar life, and battery shelf life. These parameters influence the battery's reliability, efficiency, and application suitability.



Battery operators report that more than 40% of the battery storage energy capacity operated in the United States in 2020 could perform both grid services and electricity load shifting applications.

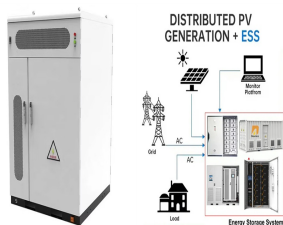


Energy can be stored in batteries for when it is needed. The battery energy storage system (BESS) is an advanced technological solution that allows energy storage in multiple ways for later use. Given the possibility that an energy supply can experience fluctuations due to weather,

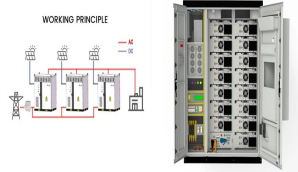
BATTERY ENERGY STORAGE LIFE IS SHORT

blackouts, or for geopolitical reasons, battery systems are vital for utilities, businesses and ???

BATTERY ENERGY STORAGE LIFE IS SHORT



To triple global renewable energy capacity by 2030 while maintaining electricity security, energy storage needs to increase six-times. To facilitate the rapid uptake of new solar PV and wind, ???



Grid-scale storage plays an important role in the Net Zero Emissions by 2050 Scenario, providing important system services that range from short-term balancing and operating reserves, ancillary services for grid stability and deferment of investment in new transmission and distribution lines, to long-term energy storage and restoring grid



Energy storage has a flexible regulatory effect, which is important for improving the consumption of new energy and sustainable development. The remaining useful life (RUL) forecasting of energy storage batteries is of significance for improving the economic benefit and safety of energy storage power stations. However, the low accuracy of the current RUL ???



Energy can be stored in batteries for when it is needed. The battery energy storage system (BESS) is an advanced technological solution that allows energy storage in multiple ways for later use. Given the possibility that an energy ???



The International Renewable Energy Agency predicts that with current national policies, targets and energy plans, global renewable energy shares are expected to reach 36% and 3400 GWh of stationary energy storage by 2050. However, IRENA Energy Transformation Scenario forecasts that these targets should be at 61% and 9000 GWh to achieve net zero ???

BATTERY ENERGY STORAGE LIFE IS SHORT



Battery energy storage is an evolving market, continually adapting and innovating in response to a changing energy landscape and technological advancements. In a microgrid powered by batteries, the inverter output sets the limit for short-circuit current and energy that can be delivered during a fault. Assessing whether coordinated breaker



Among the existing electricity storage technologies today, such as pumped hydro, compressed air, flywheels, and vanadium redox flow batteries, LIB has the advantages of fast response ???



A recent study reported that several TWh of storage capacity will be needed for 43???81 % renewable penetration by adding together all the short-duration storage (<12 h), but ???