

BATTERY ENERGY STORAGE POWER STATION



What is a battery energy storage system? A battery energy storage system (BESS) is an electrochemical device that charges (or collects energy) from the grid or a power plant and then discharges that energy at a later time to provide electricity or other grid services when needed.



What is a battery energy storage system (BESS)? A battery energy storage system (BESS) or battery storage power station is a type of energy storage technology that uses a group of batteries to store electrical energy.



What is connection form of collection system of battery energy storage power station? Connection form of collection system of battery energy storage power station The energy storage system is mainly composed of energy storage battery pack, power conversion system (PCS), battery management system (BMS), battery monitoring system (MNS) and other subsystems .



Who uses battery energy storage systems? The most natural users of Battery Energy Storage Systems are electricity companies with wind and solar power plants. In this case, the BESS are typically large: they are either built near major nodes in the transmission grid, or else they are installed directly at power generation plants.



What is a battery energy storage power station? The battery energy storage power station is composed of battery clusters, PCS, lines, bus bar, transformer, and other power equipment. When the scale is large, the simulation method can be used to evaluate. When the scale is relatively small, the enumeration method can be used for reliability evaluation.

BATTERY ENERGY STORAGE POWER STATION



When can energy be stored in batteries? Energy can be stored in batteries for when it is needed. The battery energy storage system (BESS) is an advanced technological solution that allows energy storage in multiple ways for later use.



The performance of the LiFePO₄ (LFP) battery directly determines the stability and safety of energy storage power station operation, and the properties of the internal electrode materials are the core and key to determine the quality of the battery. In this work, two kinds of commercial LFP batteries were studied by analyzing the electrical



The operating principle of a battery energy storage system (BESS) is straightforward. Batteries receive electricity from the power grid, straight from the power station, or from a renewable energy source like solar panels or other a?|



Called the Reid Gardner Battery Energy Storage System, the backup power plant is rated at 220 megawatts and 440 megawatt hours of power generated from excess solar and wind energy, per Electrek.



As large-scale lithium-ion battery energy storage power facilities are built, the issues of safety operations become more complex. The existing difficulties revolve around effective battery health evaluation, cell-to-cell variation evaluation, circulation, and resonance suppression, and more. Based on this, this paper first reviews battery health evaluation a?|

BATTERY ENERGY STORAGE POWER STATION



Battery storage project will provide enough power to meet the peak demand of a small city like Oshawa. Find out more The 250-megawatt Oneida Energy Storage in southern Ontario will draw and store electricity from the provincial grid, more than 80 per cent of which is emissions-free, when power demand is low and return the power to the



They studied the role for storage for two variants of the power system, populated with load and VRE availability profiles consistent with the U.S. Northeast (North) and Texas (South) regions. The paper found that in both regions, the value of battery energy storage generally declines with increasing storage penetration.



Discover what BESS are, how they work, the different types, the advantages of battery energy storage, and their role in the energy transition. Battery energy storage systems (BESS) are a a?|

APPLICATION SCENARIOS



On November 16, Fujian GW-level Ningde Xiapu Energy Storage Power Station (Phase I) of State Grid Times successfully transmitted power. The project is mainly invested by State Grid Integrated Energy and CATL, which is the largest single grid-side standalone station-type electrochemical energy storage power station in China so far.

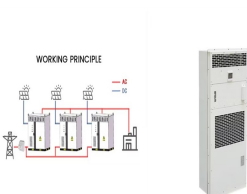


MW Andasol solar power station is a commercial parabolic trough solar thermal power plant, located in Spain. The Andasol plant uses tanks of molten salt to store captured solar energy so that it can continue generating electricity when the sun isn't shining. [1] This is a list of energy storage power plants worldwide, other than pumped hydro storage.

BATTERY ENERGY STORAGE POWER STATION



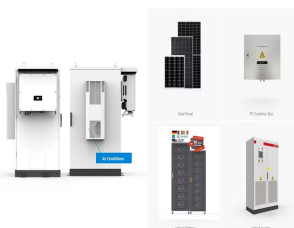
Energy storage systems for electricity generation operating in the United States Pumped-storage hydroelectric systems. Pumped-storage hydroelectric (PSH) systems are the oldest and some of the largest (in power and energy capacity) utility-scale ESSs in the United States and most were built in the 1970's. PSH systems in the United States use electricity from electric power grids to a?)



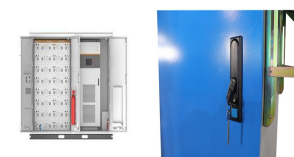
The operating principle of a battery energy storage system (BESS) is straightforward. Batteries receive electricity from the power grid, straight from the power station, or from a renewable energy source like solar panels or other energy source, and subsequently store it as current to then release it when it is needed.



Megapack is a powerful battery that provides energy storage and support, helping to stabilize the grid and prevent outages. Find out more about Megapack. For the best experience, we recommend upgrading or changing your web browser. Each unit can store over 3.9 MWh of energya??that's enough energy to power an average of 3,600 homes for one hour.

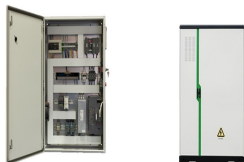


Capital Power is proposing a battery energy storage system (BESS) installation at the Goreway Power Station (GPS) that would provide up to 40 MW of power storage, with electrical energy output for up to four-hours. The project would be located within the footprint of the existing GPS.



1.2 Components of a Battery Energy Storage System (BESS) 7 1.2.1gy Storage System Components Ener 7 1.2.2 Grid Connection for Utility-Scale BESS Projects 9 1.1scharge Time and Energy-to-Power Ratio of Different Battery Technologies D 6 1.2antages and Disadvantages of Leada??Acid Batteries Adv 9

BATTERY ENERGY STORAGE POWER STATION



In order to enrich the comprehensive estimation methods for the balance of battery clusters and the aging degree of cells for lithium-ion energy storage power station, this paper proposes a state-of-health estimation and prediction method for the energy storage power station of lithium-ion battery based on information entropy of characteristic data. This method a?|



What is grid-scale battery storage? Battery storage is a technology that enables power system operators and utilities to store energy for later use. A battery energy storage system (BESS) is an electrochemical device that charges (or collects energy) from the grid or a power plant and a?|



is a problem with the energy supply from the power grid. If the battery energy storage system is configured to power the charging station when the power grid is 99th percentile day in the fifth year of charging minimum battery-buffered DCFC energy storage station operation. capacity in the reference tables in the Appendix. 7 . Battery



Large-scale integration of renewable energy in China has had a major impact on the balance of supply and demand in the power system. It is crucial to integrate energy storage devices within wind power and photovoltaic (PV) stations to effectively manage the impact of large-scale renewable energy generation on power balance and grid reliability.

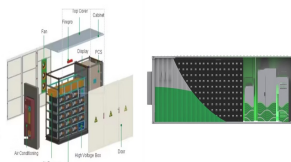


Nowadays, an increasing number of battery energy storage station (BESS) is constructed to support the power grid with high penetration of renewable energy sources. However, many accidents occurred in BESSs threaten the development of the BESS, so it is important to develop a protection method for the BESS.

BATTERY ENERGY STORAGE POWER STATION



The battery energy storage power station composed of N energy storage units can be regarded as a multi-agent system composed of N agents. a_i is related to the grouping state of energy storage units. Information is exchanged among energy storage units in the same group, and the physical characteristics of energy storage units, such as output



MW Dalian Flow Battery Energy Storage Peak-shaving Power Station, with the largest power and capacity in the world so far, was connected to the grid in Dalian, China, on September 29, and it will be put into operation in mid-October. This energy storage project is supported technically by Prof. LI Xianfeng's group from the Dalian Institute of Chemical Physics (DICP) of a?



On July 20th, the innovative demonstration project of the combined compressed air and lithium-ion battery shared energy storage power station commenced in Maying Town, Tongwei County, Dingxi City, Gansu Province. This is the first energy storage project in China that combines compressed air and lithium-ion battery technology. The project is



300 MWh is perhaps big or even "huge" for a battery storage but not generally for storing energy. 300 MWh is about the energy that a typical nuclear power plant delivers in 20 minutes. A modern pumped hydro storage, for example (Nant-de-Drance, Switzerland), stores about 20 GWh (with turbines for 900 MW) what is about 67 times the 300 MWh.



The battery energy storage station (BESS) is the current and typical means of smoothing wind- or solar-power generation fluctuations. Such BESS-based hybrid power systems require a suitable control strategy that can effectively regulate power output levels and battery state of charge (SOC). This paper presents the results of a wind/photovoltaic (PV)/BESS a?

BATTERY ENERGY STORAGE POWER STATION



For a battery energy storage system to be intelligently designed, both power in megawatt (MW) or kilowatt (kW) and energy in megawatt-hour (MWh) or kilowatt-hour (kWh) ratings need to be specified. The power-to-energy ratio is normally higher in situations where a large amount of energy is required to be discharged within a short time period



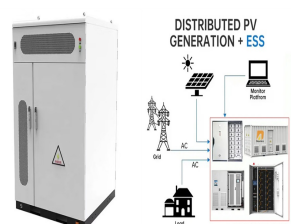
OverviewConstructionSafetyOperating characteristicsMarket development and deploymentSee also



At least one USB-C port, 6 mm DC port, and/or car power socket: We don't require each model to have all three, but we prefer power stations that have one or more fast-charging USB-C ports, 6 mm



The Zhangbei energy storage power station is the largest multi-type electrochemical energy storage station in China so far. The topology of the 16 MW/71 MWh BESS in the first stage of the Zhangbei national demonstration project is shown in Fig. 1.As can be seen, the wind/PV/BESS hybrid power generation system consists of a 100 MW wind farm, a 40 MW a?]



Reliability evaluation model of power collection system in energy storage power station. The nominal voltage and capacity of the single battery are relatively small (e.g., a a?]

BATTERY ENERGY STORAGE POWER STATION



How quickly that future arrives depends in large part on how rapidly costs continue to fall. Already the price tag for utility-scale battery storage in the United States has plummeted, dropping nearly 70 percent between 2015 and 2018, according to the U.S. Energy Information Administration. This sharp price drop has been enabled by advances in lithium-ion a?|