

# BATTERY ENERGY STORAGE SALES COMMISSION RATIO



When will large-scale battery energy storage systems come online? Most large-scale battery energy storage systems we expect to come online in the United States over the next three years are to be built at power plants that also produce electricity from solar photovoltaics, a change in trend from recent years.



What is the ratio of battery storage to co-located resource power capacity? The ratio of battery storage to co-located resource power capacity is scheduled to significantly increase over the next few years. On average, existing co-located projects have a 1:10 battery storage power capacity to co-located generator capacity on a power rating basis, while planned projects have a ratio of 1:2.



How much does battery storage cost? The costs of installing and operating large-scale battery storage systems in the United States have declined in recent years. Average battery energy storage capital costs in 2019 were \$589 per kilowatthour (kWh), and battery storage costs fell by 72% between 2015 and 2019, a 27% per year rate of decline.



How much energy does a battery storage system use? The average for the long-duration battery storage systems was 21.2 MWh, between three and five times more than the average energy capacity of short- and medium-duration battery storage systems. Table 1. Sample characteristics of capital cost estimates for large-scale battery storage by duration (2013-2019)



How does battery storage compare to generation-only technology? Unlike other energy sources, battery storage can supply and consume energy at different times of the day, creating a combination of cost and revenue streams that makes it challenging to directly compare storage with generation-only technologies.

# BATTERY ENERGY STORAGE SALES COMMISSION RATIO



What is the average power capacity of a battery storage system? For costs reported between 2013 and 2019, short-duration battery storage systems had an average power capacity of 12.4 MW, medium-duration systems had 6.4 MW, and long-duration battery storage systems had 4.7 MW. The average energy capacity for the short- and medium-duration battery storage systems were 4.7 MWh and 6.6 MWh, respectively.



Battery-based energy storage capacity installations soared more than 1200% between 2018 and 1H2023, Federal Energy Regulatory Commission Storage pipeline penetration is the ratio of planned energy storage capacity to total solar and wind planned capacity. Renewable energy curtailment is the average of two years of the ratio of curtailed



California Energy Commission. Agreement Number: EPC-19-060 . Reynaldo Gonzalez. Branch Manager. Energy storage will play an increasingly important role in California's transitioning energy system. Specifically, long-duration storage (storage with a duration of eight or more hours) will Revised 4-hr Li Battery Capital Cost From 2022 to



overview. Battery Energy Storage Solutions: our expertise in power conversion, power management and power quality are your key to a successful project Whether you are investing in Bulk Energy (i.e. Power Balancing, Peak Shaving, Load Levelling???), Ancillary Services (i.e. Frequency Regulation, Voltage Support, Spinning Reserve???), RES Integration (i.e. Time ???



First, the ratio of PV AC power to battery AC power must not exceed 150%. Or, working backwards, the AC power output of the battery must be at least two-thirds of the AC power output of the PV array. For example, if we have a battery with a rated power output of 10 kW, we can install a maximum of 15 kW of solar PV ( $10 \times 150\% = 15$ ).

# BATTERY ENERGY STORAGE SALES COMMISSION RATIO



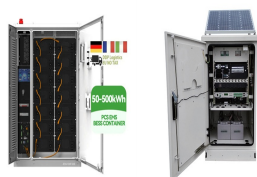
Part 5: How to properly size the DC/AC ratio (panels, inverters, and storage) on DC-coupled solar + storage systems; Other posts in the Solar + Energy Storage series. Part 1: Why Large-scale Fire Testing Is Needed for Battery Energy Storage Safety. Industry Trends May 23, 2023. Powering the Nordic Market with Battery-based Energy Storage



energy with battery energy storage systems sales in 2025 to 45 percent in 2030, according to the McKinsey Center for Future Mobility. This European Commission's sustainability-focused Big Buyers initiative and Oslo's plan for net zero on ???



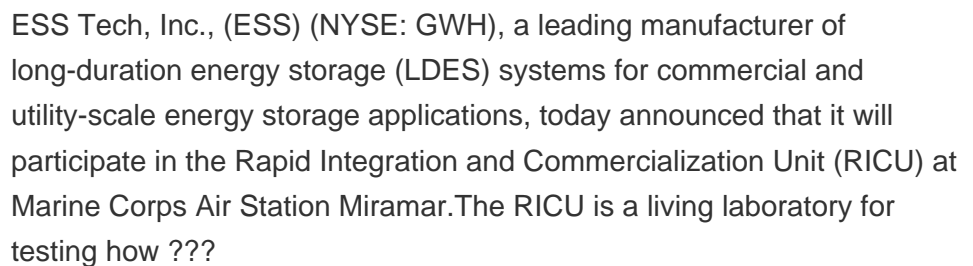
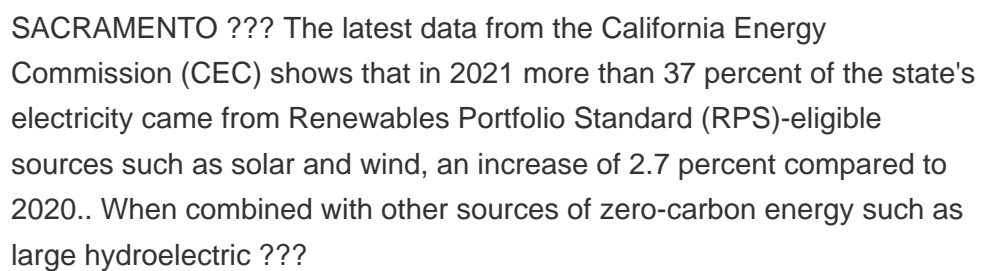
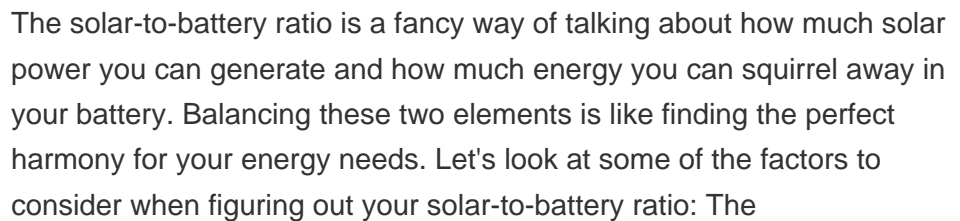
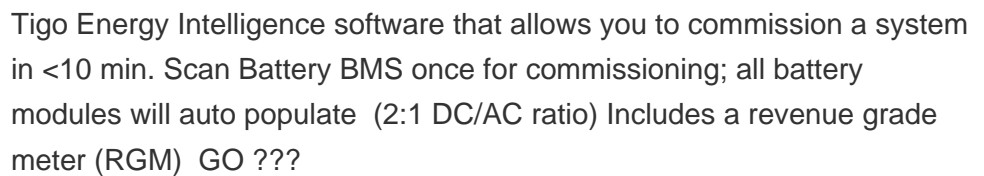
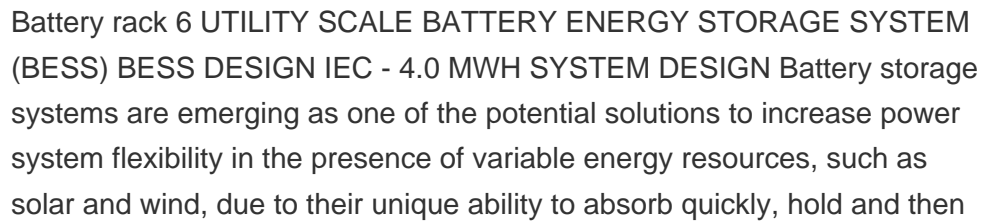
Selection of battery type. BESS can be made up of any battery, such as Lithium-ion, lead acid, nickel-cadmium, etc. Battery selection depends on the following technical parameters: BESS Capacity: It is the amount of energy that the BESS can store. Using Lithium-ion battery technology, more than 3.7MWh energy can be stored in a 20 feet container.



The International Renewable Energy Agency predicts that with current national policies, targets and energy plans, global renewable energy shares are expected to reach 36% and 3400 GWh of stationary energy storage by 2050. However, IRENA Energy Transformation Scenario forecasts that these targets should be at 61% and 9000 GWh to achieve net zero ???



State Commission Staff Surge Call: Equitable Access to Battery Energy Storage On April 14, 2021, NARUC facilitated a state commission staff "surge" call with the Subcommittee on of the adder is variable and is based on the ratio of the battery capacity to the solar capacity. A facility within this program must also meet certain



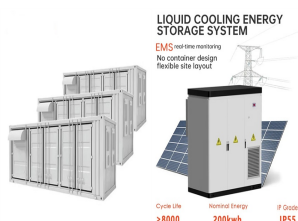
# BATTERY ENERGY STORAGE SALES COMMISSION RATIO



The content of this paper does not reflect the official opinion of the European Commission. 2. 3 Acknowledgements CONTRIBUTORS: BES Battery Energy Storage BESS Battery Energy Storage Systems BEV Battery Electrified Vehicle BM Battery Management BMS Battery Management System (at cell and system level)



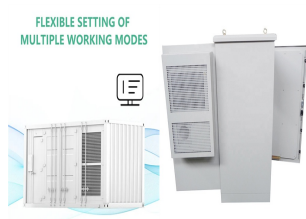
Energy Storage Technologies Empower Energy Transition report at the 2023 China International Energy Storage Conference. The report builds on the energy storage-related data released by the CEC for 2022. Based on a brief analysis of the global and Chinese energy storage markets in terms of size and future development, the publication delves into the



Energy Storage Grand Challenge Energy Storage Market Report 2020 December 2020 FERC Federal Energy Regulatory Commission IEA International Energy Agency Figure 21. 2018 lead-acid battery sales by company 21 Figure 22. Projected global lead-acid battery demand



overview. Battery Energy Storage Solutions: our expertise in power conversion, power management and power quality are your key to a successful project Whether you are investing in Bulk Energy (i.e. Power Balancing, Peak ???



2.5 E/P ratio. Battery capacity is in kW DC. E/P is battery energy to power ratio and is synonymous with storage duration in hours. Battery pack cost: \$283/kWh: Battery pack only : Battery-based inverter cost: \$183/kWh: Assumes a bidirectional inverter, converted from \$/kWh for 5-kW/12.5-kWh system: Supply chain costs: 6.5% (U.S. average)

# BATTERY ENERGY STORAGE SALES COMMISSION RATIO



The California Energy Commission, or CEC, last week approved a \$30 million grant to long-duration energy storage developer Form Energy to build its first project in California capable of



The need to use energy storage systems (ESSs) in electricity grids has become obvious because of the challenges associated with the rapid increase in renewables [1]. ESSs can decouple the demand and supply of electricity and can be used for various stationary applications [2]. Among the ESSs, electro-chemical storage systems will play a vital role in the future.



1 Smart Energy Council (September 2018) "Australian Energy Storage Market Analysis" 2 For the purposes of this report, LSBS is defined as a battery >5 MW (to align with AEMO's generating system



US Energy Information Administration, Battery Storage in the United States: An Update on Market Trends, p. 8 (Aug. 2021). Wood Mackenzie Power & Renewables/American Clean Power Association, US Storage Energy Monitor, p. 3 (Sept. 2022). See IEA, Natural Gas-Fired Electricity (last accessed Jan. 23, 2023); IEA, Unabated Gas-Fired Generation in the Net ???



Energy Storage System Volume NiMH Battery (liters) 200 . DOE H2 Storage Goal -0 50 100 150 200 250 300 350 400. Range (miles) DOE Storage Goal: 2.3 kWh/Liter BPEV.XLS; "Compound" AF114 3/25 /2009 . Figure 6. Calculated volume of hydrogen storage plus the fuel cell system compared to the space required for batteries as a function of vehicle range



# BATTERY ENERGY STORAGE SALES COMMISSION RATIO

---



Energy storage is one of the emerging technologies which can store energy and deliver it upon meeting the energy demand of the load system. Presently, there are a few notable energy storage devices such as lithium-ion (Li-ion), Lead-acid ( $\text{PbSO}_4$ ), flywheel and super capacitor which are commercially available in the market [9, 10]. With the



1 ? Commission is a huge perk for salespeople who appreciate an uncapped earning potential and clear metrics of success. Commission structures are also a motivating factor that give salespeople some independence, help them reach on-target earning (OTE), and help managers meet goals month over month.. The average commission rate for sales sits ???