

# BATTERY ENERGY STORAGE STATION ISSUES



What happens if a battery energy storage system is damaged? Battery Energy Storage System accidents often incur severe losses in the form of human health and safety, damage to the property and energy production losses.



What is a battery energy storage system? A battery energy storage system (BESS) is an electrochemical device that charges (or collects energy) from the grid or a power plant and then discharges that energy at a later time to provide electricity or other grid services when needed.



What is battery energy storage system (BESS)? The sharp and continuous deployment of intermittent Renewable Energy Sources (RES) and especially of Photovoltaics (PVs) poses serious challenges on modern power systems. Battery Energy Storage Systems (BESS) are seen as a promising technology to tackle the arising technical bottlenecks, gathering significant attention in recent years.



What is battery storage & why is it important? Battery storage is one of several technology options that can enhance power system flexibility and enable high levels of renewable energy integration.



What are the challenges associated with large-scale battery energy storage? As discussed in this review, there are still numerous challenges associated with the integration of large-scale battery energy storage into the electric grid. These challenges range from scientific and technical issues, to policy issues limiting the ability to deploy this emergent technology, and even social challenges.

# BATTERY ENERGY STORAGE STATION ISSUES



How to reduce the safety risk associated with large battery systems? To reduce the safety risk associated with large battery systems, it is imperative to consider and test the safety at all levels, from the cell level through module and battery level and all the way to the system level, to ensure that all the safety controls of the system work as expected.



Energy storage can realise the bi-directional regulation of active and reactive power, which is an important means to solve the challenge . Energy storage includes pumped storage, electrochemical energy storage, compressed air energy storage, molten salt heat storage etc . Among them, electrochemical energy storage based on lithium-ion battery



charging (DCFC) station, the battery energy storage system can discharge stored energy rapidly, providing EV charging at a rate far greater than the rate at which it draws energy from the power grid. 1 . 1 . NREL prepared a set of reference tables that provide recommended minimum energy storage (kWh) capacity for a 150kW battery-buffered



Fluctuating solar and wind power require lots of energy storage, and lithium-ion batteries seem like the obvious choice???but they are far too expensive to play a major role. ???



Among the existing electricity storage technologies today, such as pumped hydro, compressed air, flywheels, and vanadium redox flow batteries, LIB has the advantages of fast response rate, high energy density, good energy efficiency, and reasonable cycle life, as shown in a quantitative study by Schmidt et al. In 10 of the 12 grid-scale

# BATTERY ENERGY STORAGE STATION ISSUES



These problems demonstrate that the location and size of charging stations are complex issues that need to be comprehensively addressed on both the power grid and EV side . which was designed to reduce its influence on a vulnerable AC-grid. The station integrates battery energy storage, restricts the amount of electricity imported, and



1 Overview of the First Utility-Scale Energy Storage Project in Mongolia, 2020???2024 5 2 Major Wind Power Plants in Mongolia's Central Energy System 8 3 Expected Peak Reductions, Charges, and Discharges of Energy 9 4 Major Applications of Mongolia's Battery Energy Storage System 11 5 Battery Storage Performance Comparison 16



This issue of Zoning Practice explores how stationary battery storage fits into local land-use plans and zoning regulations. It briefly summarizes the market forces and land-use issues associated with BESS development, analyzes existing regulations for these systems, and offers guidance for new regulations rooted in sound planning principles.



Energy storage can help to resolve this, with the demand for storage solutions rising in parallel with demand for renewable energy generation sources. Pumped hydro currently dominates the energy storage market overall and accounts for approximately 94 per cent of global market capacity.



A battery energy storage system (BESS) captures energy from renewable and non-renewable sources and stores it in rechargeable batteries (storage devices) for later use. A battery is a Direct Current (DC) device and when needed, the electrochemical energy is discharged from the battery to meet electrical demand to reduce any imbalance between

# BATTERY ENERGY STORAGE STATION ISSUES



As large-scale lithium-ion battery energy storage power facilities are built, the issues of safety operations become more complex. The existing difficulties revolve around effective battery health evaluation, cell-to-cell variation evaluation, circulation, and resonance suppression, and more. Based on this, this paper first reviews battery health evaluation ???



Battery energy storage systems (BESS) are becoming pivotal in the revolution happening in how we stabilize the grid, integrate renewables, and generally store and utilize electrical energy. BESS operates by storing electrical energy in rechargeable reserves, which can later be discharged to power local or grid-scale demand.



The framework for categorizing BESS integrations in this section is illustrated in Fig. 6 and the applications of energy storage integration are summarized in Table 2, including standalone battery energy storage system (SBESS), integrated energy storage system (IESS), aggregated battery energy storage system (ABESS), and virtual energy storage



A recent fire at a battery storage facility in California is bringing fresh attention to safety issues tied to energy storage as the technology grows in deployment across the U.S. The fire occurred in September 2022 at Pacific Gas & Electric's (PG& E) Moss Landing battery storage facility in California.



Megapack is a powerful battery that provides energy storage and support, helping to stabilize the grid and prevent outages. By strengthening our sustainable energy infrastructure, we can create a cleaner grid that protects our communities and the environment. Resiliency. Megapack stores energy for the grid reliably and safely, eliminating the

# BATTERY ENERGY STORAGE STATION ISSUES



Purpose of review This paper reviews optimization models for integrating battery energy storage systems into the unit commitment problem in the day-ahead market. Recent Findings Recent papers have proposed to use battery energy storage systems to help with load balancing, increase system resilience, and support energy reserves. Although power system ???



Battery energy storage (BES)??? Lead-acid??? Lithium-ion??? Nickel-Cadmium??? Sodium-sulphur ??? Sodium ion ??? Metal air??? Solid-state batteries In 1965, the first ATEs was reported in Shanghai, China. There were three interrelated problems in Shanghai that led to the development of ATEs ??? ground subsidence, pollution of groundwater



In a paper recently published in Applied Energy, researchers from MIT and Princeton University examine battery storage to determine the key drivers that impact its economic value, how that value might change with increasing deployment over time, and the implications for the long-term cost-effectiveness of storage. "Battery storage helps make

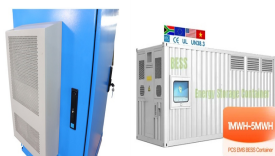


Figure 1 depicts the various components that go into building a battery energy storage system (BESS) that can be a stand-alone ESS or can also use harvested energy from renewable energy sources for charging. The electrochemical cell is the fundamental component in creating a BESS. originally developed to solve some of the problems of the Na



The EcS risk assessment framework presented would benefit the Malaysian Energy Commission and Sustainable Energy Development Authority in increased adoption of battery storage systems with large-scale solar plants, ???

# BATTERY ENERGY STORAGE STATION ISSUES



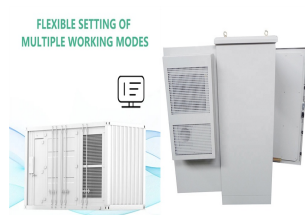
Battery Energy Storage Systems. An energy storage system is the ability of a system to store energy using the likes of electro-chemical solutions. Solar and wind energy are the top projects the world is embarking on as they can meet future energy requirements, but because they are weather-dependent it is necessary to store the energy generated



In the past few decades, electricity production depended on fossil fuels due to their reliability and efficiency [1]. Fossil fuels have many effects on the environment and directly affect the economy as their prices increase continuously due to their consumption which is assumed to double in 2050 and three times by 2100 [6] g. 1 shows the current global ???



Tenaga Nasional Bhd will kick-start a 400 megawatt-hour (MWh) battery energy storage system (BESS) pilot project in this quarter, marking Malaysia's first utility-scale battery storage project to address intermittency issues of renewable energy (RE).



battery storage systems today store between two and four hours of energy. In practice, storage is more often combined with solar power than with wind. At the current trajectory of technological improvements and falling costs, battery storage, in combination with solar generation, will be highly competitive with alternatives by 2030.



Global investment in battery energy storage exceeded USD 20 billion in 2022, predominantly in grid-scale deployment, which represented more than 65% of total spending in 2022. After solid growth in 2022, battery energy storage investment is expected to hit another record high and exceed USD 35 billion in 2023, based on the existing pipeline of



# BATTERY ENERGY STORAGE STATION ISSUES



World's first 8 MWh grid-scale battery in 20-foot container unveiled by Envision. The new system features 700 Ah lithium iron phosphate batteries from AESC, a company in which Envision holds a



To minimize the curtailment of renewable generation and incentivize grid-scale energy storage deployment, a concept of combining stationary and mobile applications of battery energy storage systems built within renewable energy farms is proposed. A simulation-based optimization model is developed to obtain the optimal design parameters such as battery ???

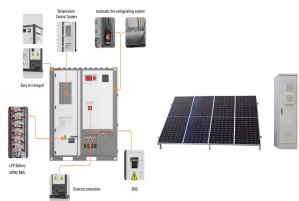
## Commercial and Industrial ESS

Air Cooling / Liquid Cooling

- Budget-friendly Solution
- Renewable Energy Integration
- Modular Design for Flexible Expansion



Battery energy storage system (BESS) is one of the effective technologies to deal with power fluctuation and intermittence resulting from grid integration of large renewable generations.



1 Zhangye Branch of Gansu Electric Power Corporation State Grid Corporation of China Zhangye, Zhangye, China; 2 School of New Energy and Power Engineering, Lanzhou Jiaotong University Lanzhou, Lanzhou, China; Aiming at the current lithium-ion battery storage power station model, which cannot effectively reflect the battery characteristics, a proposed ???