

BATTERY GRIDS BELGIUM



Where is the battery energy storage project located in Belgium? Once completed, the four-hour battery energy storage project will operate under a 15-year contract with Elia, Belgium's electricity grid operator, and be located next to Engie's gas power plant in Vilvoorde. From pv magazine ESS News site



Will Sweco design a Battery Park for giga storage Belgium? Sweco will design one of continental Europe's largest battery parks, Green Turtle, for the energy storage company GIGA Storage Belgium. This facility will have a storage capacity of 2,800 MWh of electricity.



Will Engie be able to build a new battery plant in Belgium? Engie described this as a double success within the CRM framework, which ensures a future for its site in Belgium. The Vilvoorde BESS project will be launched in two phases, with the commissioning of 100 MW of batteries in September 2025, and a further 100 MW in January 2026.



The outcome of these negotiations will undeniably exert substantial influence on the future trajectory of the Belgian battery factory and the broader landscape of battery manufacturing in Europe. With both Energizer and Aurelius maintaining a veil of secrecy regarding the intricacies of their ongoing talks, stakeholders within the industry and



The battery park has a 15-year contract with Elia, Belgium's national grid operator, and will be able to release power to the grid for four hours at a time. The construction milestone follows the project's construction permit in July 2023 and its selection for capacity remuneration in October 2023.



TotalEnergies' storage capacity in Belgium to 50 MW / 150 MWh. These battery storage sites play a key role in the resilience of the electricity system, providing flexibility and helping solve grid congestion problems. They also encourage the growth of renewable energies in the country,

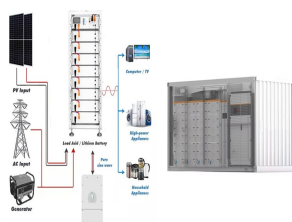
BATTERY GRIDS BELGIUM

which require solutions like these to compensate for their

BATTERY GRIDS BELGIUM



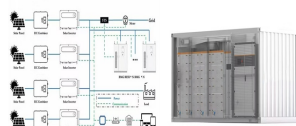
??? ELIA TSO: The operator of the national high-voltage grid for voltages of 70 kV and higher. The TSO is responsible for the balance between injection and offtake on the grid. They also supply directly large industrial consumers. ??? The distribution grid operators (DSO): They manage mid-voltage grids (10 to 70 kV) and the distribution grid.



Battery BASF integrates battery storage unit with electricity grid at Antwerp, Belgium. With this long-term project in Antwerp, the BASF team wants to test various operating scenarios and further explore the potential of ???



Battery BASF integrates battery storage unit with electricity grid at Antwerp, Belgium. With this long-term project in Antwerp, the BASF team wants to test various operating scenarios and further explore the potential of NAS batteries. By ICN Bureau | ???



With 84 battery enclosures and a capacity of 100MWh, it will be the one of the largest ever battery park connected to the Belgian high-voltage network. Installed on the site of a former coal-fired power station, it will be able to supply 25 megawatts for 4 hours and will be one of the first battery parks in Europe to have such a capacity.



The battery energy storage system (BESS) facility in Belgium will have a capacity of 2,800MWh of electricity and is expected to make a significant contribution to the energy grid by providing stored renewable energy during periods of low solar and wind energy production, reducing the country's reliance on gas power plants.



Belgium has limited battery storage capacity. There are no official consolidated data on battery storage, as this is not yet part of the mandatory energy statistics. A first unverified compilation of operational battery projects used for grid balancing was conducted in September 2021

BATTERY GRIDS BELGIUM

and estimated capacity around 32.5 MW/30 MWh.

BATTERY GRIDS BELGIUM



The agreement concluded with our contractors, including Sweco, to be GIGA Storage Belgium's partner for the design of the Green Turtle battery park comprises an important milestone. This is a flagship project for us ???



In Vilvoorde, on the outskirts of Brussels (Belgium), ENGIE's future 200-megawatt battery park will be capable of meeting the electricity consumption needs of nearly 96,000 households by 2025. Infrastructure ???



Green Turtle, situated on the Rotem industrial site in Belgium's northwestern Limburg province, was originally planned as a 600 MW battery storage park for renewable energy. For technical optimization, client GIGA Storage Belgium opted to scale up to a capacity of 700MW. This corresponds to the average energy consumption of 385,000 households

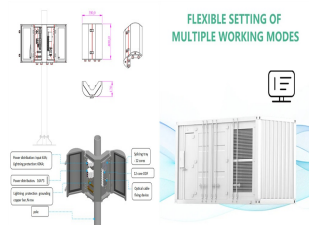


A 50MW/100MWh battery energy storage system, the largest in continental Europe, has been inaugurated in Belgium by developer Corsica Sole. The system in the French-speaking region of Wallonia came online last week (1 December), and is the first of three 100MWh projects in Belgium that have been slated to come online before the end of the year



Battery Energy Storage Systems (BESSs) for prosumers in distribution grids can be used to increase self-consumption of a PV installation and to stack ancillary services. A variable pricing strategy is used to incentivise prosumers to participate in some ancillary services while other ancillary services are implemented through an economic

BATTERY GRIDS BELGIUM



Download the Press Release (PDF) Antwerp, April 3, 2024 ??? On the occasion of Belgian Energy Minister Tinne Van der Straeten's visit to TotalEnergies' Antwerp refinery battery storage project, the Company announced the development in Belgium of a second similar project.. The new project will be developed on the site of TotalEnergies' depot in Feluy.



The battery energy storage system (BESS) park in Vilvoorde, Belgium, one of the largest in Europe, will cover 3.5 hectares ??? about the size of 3.3 football fields. The site will accommodate 320 battery modules, measuring ???



Sweco will design one of continental Europe's largest battery parks, Green Turtle, for the energy storage company GIGA Storage Belgium. This facility will have a storage capacity of 2,800 MWh of electricity.



Tesla also has a 50MW/100MWh project in Lessines, Belgium with 40 Megapacks, as is being operated by Corsica Sole. The company highlighted this site in a brief video shared last year, as can be



Sweco will design one of continental Europe's largest battery parks, Green Turtle, for the energy storage company GIGA Storage Belgium. This facility will have a storage capacity of 2,800 MWh of electricity.

Dilsen-Stokkem will store surplus wind or solar energy as it is produced to make that renewable energy available on the grid during



The park will play a crucial role in the energy grid by supplying stored renewable energy during times when solar and wind production is low, thereby decreasing Belgium's dependence on gas power plants. Sweco will be responsible for designing the civil and electrical engineering

BATTERY GRIDS BELGIUM

aspects of the battery energy storage system (BESS).

BATTERY GRIDS BELGIUM



With 84 battery enclosures and a capacity of 100MWh, it will be the one of the largest ever battery park connected to the Belgian high-voltage network. Installed on the site of ???



Centrica will connect the battery storage assets to the Belgian electricity grid, allowing Google's on-site batteries to flexibly store and discharge energy using Centrica's FlexPond software. The project hopes to demonstrate the role that industrial consumers can play in stabilising electricity grids via on-site batteries.



MW battery-based energy storage system provided by Fluence, the first of its kind for Google, supplies the hyperscale data centre facility in St. Ghislain with zero-emission electricity during grid outages, supporting Google's 2030 carbon-free energy goal Google will also use Centrica's network for the first time to support grid stability and advance ???



Progress has also been made at the company's data centre in Saint-Ghislain, Belgium, with a battery storage project fully installed, tested and being prepared to go into full service. of which 2.75MWh will be optimised for participation in Belgian grid demand response programmes. The battery storage will be aggregated with other

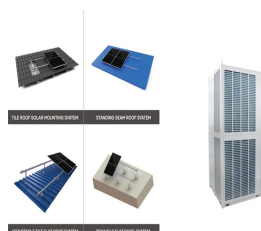


The component that supports the active material in the lead-acid battery plate is usually a grid-like structure, called a grid. The grid has three functions in the battery, one is that the grid supports the active material and is the carrier of the active material; the other is that the grid is the conductor of the active material, and the electricity stored by the active material ???

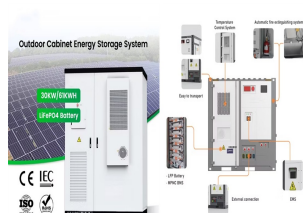
BATTERY GRIDS BELGIUM



Eneco is investing in a major battery energy storage project in Wallonia. With the installation of a 50 MW/200 MWh of battery energy storage, sustainably generated electricity can be used more efficiently to balance Belgium's ???



The agreement concluded with our contractors, including Sweco, to be GIGA Storage Belgium's partner for the design of the Green Turtle battery park comprises an important milestone. This is a flagship project for us in Belgium and an important project in realising the energy transition in Europe, where access to large-scale electricity



FORMULA 1 ROLEX BELGIAN GRAND PRIX 2024 - STARTING GRID. 26 - 28 Jul 2024. Circuit de Spa-Francorchamps, Spa-Francorchamps. Race; Race Result; Fastest Laps; Pit Stop Summary; Starting Grid; Qualifying; Note - Verstappen penalised 10 grid places for use of additional power unit element. Tsunoda required to start from the back of the grid for



The Green Turtle battery park on the Rotem industrial estate in the town of Dilsen-Stokkem, northeastern Belgium, will also be even larger than previously announced. Initially, GIGA Storage Belgium announced that it would build a battery with a power output of 600 MW and storage capacity of 2,400 MWh.



TotalEnergies has launched at its Antwerp refinery, a battery farm project for energy storage with a power rating of 25 MW and capacity of 75 MWh, equivalent to the daily consumption of close to

BATTERY GRIDS BELGIUM



Similar to last year, battery energy storage systems (BESS) made up almost all new-build capacity selected in recent Capacity Remuneration Mechanism (CRM) auctions in Belgium. Simon De Clercq



The park will make a significant contribution to the energy grid by providing stored renewable energy during periods of low solar and wind energy production ??? thereby reducing Belgium's reliance on gas power plants. Sweco will deliver the design of the civil engineering and electrical engineering works of the battery energy storage system



EnergyVille unites the Belgian research institutes KU Leuven, VITO, imec and UHasselt for research on sustainable energy and intelligent energy systems. Contact. EnergyVille 1& 2 - Thor Park 8310 & 8320 - 3600 Genk / Belgium info@energyville - Tel +32 (0)89 39 97 00. Footer.