

BATTERY LIFE OF CENTRALIZED ENERGY STORAGE POWER STATION



What is the cycle life of a battery storage system? Cycle life/lifetime is the amount of time or cycles a battery storage system can provide regular charging and discharging before failure or significant degradation. For example, a battery with 1 MW of power capacity and 4 MWh of usable energy capacity will have a storage duration of four hours.



What is a battery energy storage system? A battery energy storage system (BESS) is an electrochemical device that charges from the grid or a power plant and then discharges that energy to provide electricity or other grid services when needed.



What is the difference between rated power capacity and storage duration? Rated power capacity is the total possible instantaneous discharge capability of a battery energy storage system (BESS), or the maximum rate of discharge it can achieve starting from a fully charged state. Storage duration, on the other hand, is the amount of time the BESS can discharge at its power capacity before depleting its energy capacity.



How do energy storage power stations perform state evaluation & performance evaluation? At the terminal of the system, the state evaluation, performance evaluation and fault analysis of the batteries in the energy storage power station are carried out through horizontal and vertical data analysis. Through edge computing, system operation data and evaluate system operation status.



Who uses battery storage? Battery storage is a technology that enables power system operators and utilities to store energy for later use.

BATTERY LIFE OF CENTRALIZED ENERGY STORAGE POWER STATION



Does energy storage power station play a role in integration of multiple stations? Using the two-layer optimization method and the particle swarm optimization algorithm, it is proposed that the energy storage power station play a role in the integration of multiple stations Optimal operation strategy algorithm in a complex scenario with multiple functions.



With the continuous development of energy storage technologies and the decrease in costs, in recent years, energy storage systems have seen an increasing application on a ???



This article proposes an operational planning framework for a CCS with integration of photovoltaic solar power sources and an Echelon Battery System (EBS) comprising batteries retired from ???



Abstract: Centralized Charging Station (CCS) provides a convenient charging and maintenance platform for providing battery charging and delivery services to serve Electric Vehicles (EVs)" ???



The products are widely used in centralized energy storage, fire storage modulation, industrial & commercial energy storage, PV+energy storage+charge all-in-one, station area smart flexible power supply, emergency rescue power ???

BATTERY LIFE OF CENTRALIZED ENERGY STORAGE POWER STATION



Energy can be stored in batteries for when it is needed. The battery energy storage system (BESS) is an advanced technological solution that allows energy storage in multiple ways for later use. Given the possibility that an ???



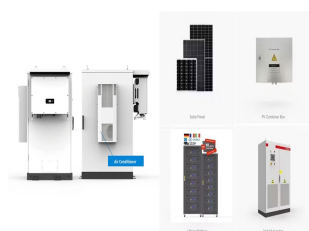
Safety management: As special equipment, energy storage power stations have certain risks in their operation. Therefore, safety management is the primary focus of energy storage power station operation and maintenance ???



In the multi-station integration scenario, energy storage power stations need to be used efficiently to improve the economics of the project. In this paper, the life model of the ???



In view of the problem of increasing the confidence of "centralized+distributed" resources collaborative output of virtual power plants, the project team will independently research and develop the energy ???



Coordinated control strategy of multiple energy storage power stations supporting black-start based on dynamic allocation. Author links open energy storage is required to ???

BATTERY LIFE OF CENTRALIZED ENERGY STORAGE POWER STATION



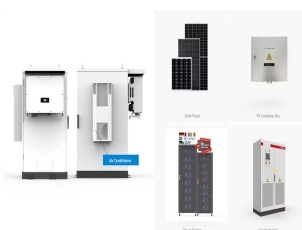
This special issue encompasses a collection of eight scholarly articles that address various aspects of large-scale energy storage. The articles cover a range of topics from electrolyte modifications for low-temperature ???



where $P_{t_{ess}}$ is the charge and discharge power of centralized shared energy storage to meet the regulatory demand of multi-scenarios at time t ; $P_{t_{ess}} > 0$ means that the shared energy storage meets the regulation ???



With the rapid development of 5G and cloud technology, it is possible to realize interconnection of distributed battery energy storage system (BESS), cloud integration of energy storage system ???



With more than 35 years of solid experience in power electronics and a profound understanding of power grid and energy storage, Kehua safeguards the stable and smooth operation throughout the life cycle of the ???



The trip power requirements of EV users, battery life, and the maximum charging and discharging power of the battery are therefore the primary factors that determine whether EV can continue to reduce the charging power ???

BATTERY LIFE OF CENTRALIZED ENERGY STORAGE POWER STATION



In the quest for a resilient and efficient power grid, Battery Energy Storage Systems (BESS) have emerged as a transformative solution. This technical article explores the diverse applications of BESS within the grid, ???