

BELGIUM SUMITOMO ENERGY



Nemo Link is a high-voltage direct current (DC) power transmission system between the U.K. and Belgium. We delivered and completed a 400 kV DC XLPE insulated cable, which was the world's first and highest-voltage DC XLPE insulated cable.



Enriching+ is Sumitomo Corporation's official owned media bringing you the real thoughts of employees and the stories behind the projects.

Category. Construction and operation of off-shore wind power systems in Belgium: Belgium: PT SUPREME ENERGY MUARA LABOH: Muara Laboh Geothermal Power Plant Project in Indonesia: Indonesia:



Belgium-headquartered BIA Group supplies and maintains construction machinery, including Komatsu, in the mining and quarrying, construction, transport, and energy sectors. "This agreement brings together Sumitomo's global experience in construction equipment distribution with BIA Group's established networks in Europe and Africa," said Tokyo



We will accelerate business development in the next-generation energy field and drive the energy transformation business of the Sumitomo Corporation Group as a whole, while leveraging our power infrastructure business platform in Japan and overseas, and further expanding the trade and business development of natural gas, LNG, and others on a



Energy Transformation Business Group; Global Cases. In the Global Cases, we present our projects and business activities in each country and region to show how they contribute to local communities and the world as a whole. Belgium. Sumitomo Benelux SA / NV Brussels Head Office Rue de Spa 8, 1000 Bruxelles, Belgium Phone: +32 2 509 7811 Fax

BELGIUM SUMITOMO ENERGY



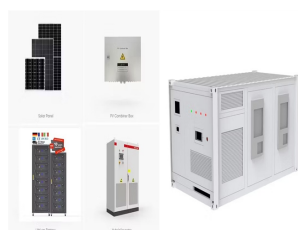
Sumitomo Corporation is involved in wind power projects in Japan, Europe, the US, South Africa and China, and is developing/operating three offshore wind farms in Belgium, two in the UK and two in France.



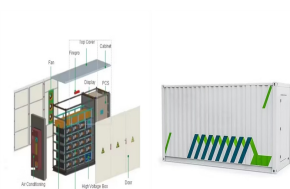
A consortium of Sumitomo Electric Industries, Ltd. (Sumitomo Electric) and Siemens Energy AG (Siemens Energy) has signed a contract with Greenlink Interconnector Limited (Greenlink) for the design, engineering, procurement, production, construction and commissioning of a high-voltage direct current (HVDC) subsea/underground electricity ???



Sumitomo Electric Industries has completed two high-voltage direct current (HVDC) interconnector cable projects using crosslinked polyethylene (XLPE) insulated cables. The first project was the construction of a 400-kV HVDC XLPE cable system, the highest voltage in the world for an HVDC-XLPE cable system, for NEMO Link, connecting the United Kingdom ???



Sumitomo Electric Industries announces that it has completed the connection of a high-voltage direct current (HVDC) interconnector cable system between the United Kingdom and Belgium after the high voltage test.



Construction Completion of 400-kV HVDC XLPE Cable System Connecting the UK and Belgium ; With the increasing capacity of renewable energy sources and construction of power interconnectors between countries and regions, demand for direct current (DC) power transmission cables, which are suitable for long-distance and large-capacity

BELGIUM SUMITOMO ENERGY



Sumitomo, a Japanese conglomerate, has inked agreements with Belgian wind company Parkwind to acquire stakes in two offshore wind energy project portfolio of 381MW. The two projects comprise 165MW Belwind 1 and 216MW Northwind both located in the North Sea. Parkwind invested ???650m for the development of Belwind, while Northwind has cost the ???



View Sumitomo Corporation's About Us : Europe. North, Central and South America. English; Portuguese; Select Region. Sumitomo Corporation Group Establishes Joint Venture to Develop Renewable Energy Projects in Virginia, United States Belgium Sumitomo Benelux S.A./N.V. Brussels Head Office: Rue de Spa 8, 1000 Bruxelles, Belgium



In 2023, the construction of both a 600-panel photovoltaic installation and a novel production line at the historic Ghent site was finalized. This strong investment introduced local manufacturing of Sumitomo Bakelite Co., Ltd.'s epoxy-based thermosetting molding compounds within Europe, and ensures the future of the Ghent site with new composite materials focused on e-mobility ???



Sumitomo's European bases for its offshore wind power business are Dusseldorf in Germany (European hub), Leuven in Belgium, London in the UK, and Paris in France. We have been exploring new business possibilities, working locally as an IPP firmly anchored in each locale and utilizing our global network as an integrated trading and business

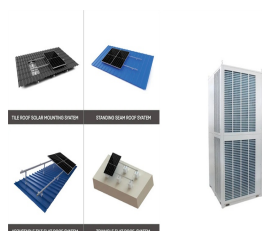


Sumitomo's European bases for its offshore wind power business are Dusseldorf in Germany (European hub), Leuven in Belgium, London in the UK, and Paris in France. We have been exploring new business possibilities, working locally as an IPP firmly anchored in each locale and utilizing our global network as an integrated trading and business

BELGIUM SUMITOMO ENERGY



Furthermore, innovations in energy storage systems and rising consumer electronics demand drive market growth. Companies such as Umicore (Belgium), Sumitomo Metal Mining Co., Ltd. (Japan), BASF SE (Germany), POSCO Future M (South Korea), and Tanaka Chemical Corporation (Japan) fall under the winners" category.



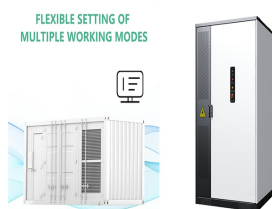
Sumitomo Corporation (Head Office: Chiyoda-ku, Tokyo; Representative Director, President and Chief Executive Officer: Masayuki Hyodo), together with Parkwind N.V. (Head Office: Belgium; hereinafter, "Parkwind", Note1) began full commercial operation on May 12, 2020 of the Northwester 2 offshore Wind Farm (hereinafter, "the Wind Farm"), developed ???



The Project, Sumitomo Corporation's fourth joint endeavor with Parkwind in Belgium, will see the two companies working together to develop, construct and operate the wind farm. Sumitomo Corporation will be putting the ???



Sumitomo Electric Industries has completed two high-voltage direct current (HVDC) interconnector cable projects using crosslinked polyethylene (XLPE) insulated cables. The first project was the construction of ???



Sumitomo Electric Industries, Ltd. is pleased to announce that it has completed the connection of a high-voltage direct current (HVDC) interconnector cable system between the United Kingdom and Belgium after the high voltage test. An inauguration ceremony was held at the Belgium substation site on December 5, 2018. This system, which is scheduled to be in ???

BELGIUM SUMITOMO ENERGY



Sumitomo Electric will continue its endeavour to lead the global market by utilizing the Company's state-of-the-art HVDC cable technologies and experience in large-scale projects. Construction of 400-kV HVDC XLPE cable system connecting the UK and Belgium In Europe, with the aim of achieving efficient use of energy and security of energy



Energy. We have divested our conventional oil and gas upstream assets to shift focus towards energy transition and low carbon business ??? such as CCS (carbon capture storage) and hydrogen. To expand our energy transition business, we ???



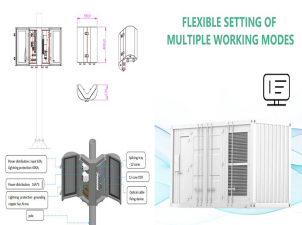
Sumitomo Corp. agreed with Belgian offshore wind energy company Parkwind to take shares in two offshore wind farm projects off the coast of Belgium. Parkwind's shareholders are the Colruyt Group, Korys NV, the investment holding of the Colruyt family, and PMV. The two offshore wind projects consist of Belwind 1, in operation since late 2010 and ???



With Hansen Industrial Transmissions NV (HIT) in Edegem, Belgium, Sumitomo Drive Technologies has over a century of innovation and expertise within its corporate family. HIT celebrated its company anniversary last year, delivering and maintaining industrial gearboxes for key industries such as material handling, energy, environment, and



View Sumitomo Corporation's News : Completion of Northwester 2 Offshore Wind Farm in Belgium. Asia & Oceania. English; Energy Transformation Business Group; Global Cases. In the Global Cases, we present our projects and business activities in each country and region to show how they contribute to local communities and the world as a whole.



Sumitomo's partner, Parkwind, develops and operates offshore wind farms and is a member of the Colruyt Group, Belgium's largest operator of supermarkets. Parkwind originally entered the offshore wind farm business to meet the electricity needs of Colruyt Group's stores,

BELGIUM SUMITOMO ENERGY

numbering roughly 1,000, with renewable energy. What a great idea!

BELGIUM SUMITOMO ENERGY



- Contributing to the development of energy infrastructure in Japan and overseas - 2019 Completed construction of 400kV HVDC submarine cable system (UK to Belgium) 2020 Completed construction of "Wind Farm Tsugaru," the largest wind power plant in Japan We will also maximize the group synergy with Nissin Electric and Sumitomo



Sumitomo Corporation Establishes Renewable Energy Development and Supply Company in India Apr. 15, 2024. Sumitomo Corporation to make primary investment in a Singapore platform to enter city gas business in India Mar. 13, 2024



View Sumitomo Corporation's About Us : Europe Office Network. Europe. Select Region. Search. About Us. Energy Transformation Business Group; Global Cases. Belgium Sumitomo Benelux S.A./N.V. Brussels Head Office: Rue de Spa 8, 1000 Bruxelles, Belgium