

BLACK GOLD STEEL PHOTOVOLTAIC PANEL



What are black solar panels? One of the latest developments in solar panel technology is the introduction of black solar panels. At MyHomeSolar, we offer a range of black solar panel options that combine superior efficiency with sleek aesthetics. What are Solar Panels? Solar panels, also known as photovoltaic (PV) panels, harness the power of the sun to generate electricity.



Can a black solar panel be installed on a roof? By installing black solar panels, in-roof panels or even solar tiles, you can incorporate solar energy into your home in the discreetest way possible. Adding both style and technology to your roof. What???s more choosing a black solar panel is choosing a Monocrystalline panel.



Are black solar panels the new white? From windows to doors, and now solar panels, it is fair to say black is the new white. Popular for their sleek, modern aesthetics, black solar panels have taken the industry by storm, with their ability to blend into slate roofs. Why are Some Solar Panels Blue?



Are black solar panels better than traditional solar panels? Black solar panels are known to have better temperature tolerance, performing well even in high-temperature conditions. Black solar panels have lower reflectivity compared to traditional panels, which may lead to slightly reduced overall efficiency in certain lighting conditions.



How much do all black solar panels cost? 400W all black solar panels can cost between ?600 and ?900 depending on the manufacturer, while 250W panels can cost between ?300 to ?500. You can go through our pick of the best solar panel manufacturers to get some idea of the available options. While solar panels can be expensive, there are ways to make them relatively affordable.

BLACK GOLD STEEL PHOTOVOLTAIC PANEL



Are black solar panels a good idea in the UK? Solar energy has become increasingly popular in the UK as homeowners strive to reduce energy bills, rely less on traditional sources of power, and contribute to a greener future. One of the latest developments in solar panel technology is the introduction of black solar panels.



*25-year warranty only for Green Specialist GOLD installers. Additional Information TRIENERGIA TRIXXXTP-BB, full black triangular photovoltaic panels for high-end residential installations. The TRIENERGIA TRIXXXTP-BB are design photovoltaic modules, (Metal Wrap Through, with electrodes on the back of the module), the cells are no longer



The DMEGC DM410M10-54HBW-V is a 410W solar PV module with a black frame. The module has a high quality design and offers impressive conversion efficiency. Durability is assured thanks to the panel's rigid construction, while ???



Corrosion-resistant aluminum frame for extended outdoor use. Suitable for Caravan, RV, Golf car, Electric car, Yacht, Boat, Tent or backpack etc. ??? High modules conversion efficiency. Grade A solar cell and IP68 Rated waterproof solar panel connectors. This PERC solar panel has 5 year 95% output warranty, 10 year 90% output warranty, 25 year 80%

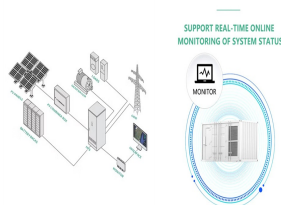


Metal Welding Products Stainless Steel Solar Panel Frame Aluminum Profile US\$ 1.99-6.42 / Piece. 100 Pieces (MOQ) GUANGDONG DONGJI INTELLIGENT DEVICE CO.,LTD. Silver, Bronze, Black, Gold, as Per Requested. 1 / 6. Favorites. Welded Steel Reinforced Corner Brackets Solar Support Frame. US\$ 1.6-1.85 / Piece. 100 Pieces (MOQ) Wulian Fushun

BLACK GOLD STEEL PHOTOVOLTAIC PANEL



PV technology is expected to play a crucial role in shifting the economy from fossil fuels to a renewable energy model (T. K?berger, 2018). Among PV panel types, crystalline silicon-based panels currently dominate the global PV landscape, recognized for their reliability and substantial investment returns (S. Preet, 2021). Researchers have developed alternative ???



Satin Stainless Steel Range D-Line Cable Management EV Cable Fixing Packs The Viridian PV16-405-M10 is a 405W solar panel from the Clearline Fusion range. Designed for roof integration, this M10 panel combines monocrystalline silicon cells with a black backing sheet and a black frame for optimum aesthetics and performance. Viridian PV16



The JA Solar JAM54D41-435/LB is a 435W all-black solar panel from the Deep Blue 4.0 Series. This N-type bifacial double glass mono module has excellent efficiency and temperature coefficient. Panels in this range are protected by a ???

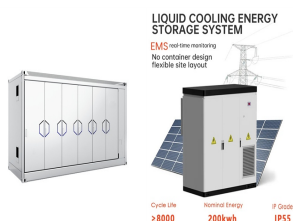


We can break down a solar panel into 3 main elements that can vary in colour. The Solar cells, the frame and the backing sheet. An all black solar panel in its truest form, would require black cells, black backing and a black frame. However, adding a Black frame to a solar panel is probably the quickest way to change its visual impact.



Under typical UK conditions, 1m² of PV panel will produce around 100kWh electricity per year, so it would take around 2.5 years to "pay back" the energy cost of the panel. PV panels have an expected life of least 25 to 30 years, so even under UK conditions a PV panel will generate many times more energy than was needed to manufacture it.

BLACK GOLD STEEL PHOTOVOLTAIC PANEL



Maintenance requirements for black and blue solar panels are generally similar. Regular cleaning and occasional inspections are essential to ensure optimal performance, regardless of the panel color. Read: Solar panel maintenance. Both black and blue solar panels require periodic cleaning to remove dirt and debris.



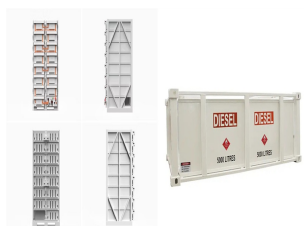
Sulcado Gold Metallic 3D Slat Wall Panel. Available in Small or Large Slat. Give your interiors a stylish design feature wall with these decorative wall panels, make these your feature to create a stand out home interior. The Sulcado slat wall panelling is lightweight, durable and easy to install & clean. Install slat wall in those more



Elevate your solar installation with our versatile Solar Panel Mounting Brackets. Ideal for metal, flat, and corrugated roofs, our brackets offer sturdy support. As a leading manufacturer, we provide quality solutions for every solar need. ???



??? High Tolerance: 500W solar panels are made with half-cell technology, it improves the power output and performance of solar modules because they offer a higher shade tolerance due to unique wiring system and number of cells increases. ??? Widely Use : 500W solar panel is ideal for off-grid, on grid or hybrid solar system, can be an ideal facility used in RV, Tiny House, marine, ???



Aluminium frames are a crucial component of solar panels, providing structural support and protecting the delicate photovoltaic cells. Understanding the technical specifications of aluminium frames is essential for selecting the right frames for your specific solar installation. This article delves into the key specifications to consider when choosing aluminium frames for ???

BLACK GOLD STEEL PHOTOVOLTAIC PANEL



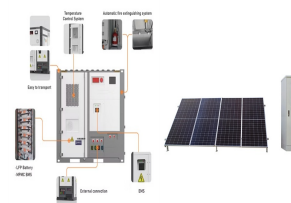
A Comprehensive Guide on Solar Back Sheet for Solar Panels. The solar backsheet is a crucial component of a solar panel as it safeguards the photovoltaic cells against environmental and electrical harm. It is the layer of ???



The Viridian PV16-335-G1 is a 335W Monocrystalline Solar Panel with a black backing sheet. The panel has a compact design and allows simple roof integration with a clean, low-profile aesthetic. G1 panels are easy to install and are compatible with a wide range of slate and tile. Solar Panels are subject to a ?150 ex VAT delivery charge up to



The Swiss Solar IBEX 144MHC-EiGER-525-545 FULL BLACK photovoltaic panels also feature a sleek design with a black backsheet that blends seamlessly with various architectural styles. The panels are designed to be easy to install and maintain and ???



The electrical connection between the photovoltaic cells is achieved through two metal contacts, one on the exposed face and the other on the opposite one, normally obtained by vacuum evaporation of metals with very low electrical resistance. An example of a thin-film solar panel is shown in Figure 3. Figure 3: Flexible thin-film panel. An



AS/NZS 5033 ??? Installation of photovoltaic (PV) arrays. Safe work practices ??? during the installation and ongoing maintenance of PV panels, New Zealand Steel recommends working safely in accordance with relevant safety legislation. Maximising roof performance. PV panels shield COLORSTEEL(R) or ZINCALUME(R) steel from both

BLACK GOLD STEEL PHOTOVOLTAIC PANEL



SunGoldPower 415W panels provide more output per surface area than most traditional panels.??? High Tolerance: 415W solar panels are made with half-cell technology, it improves the power output and performance of solar modules because they offer a higher shade tolerance due to unique wiring system and number of cells increases.???Widely Use : 415W solar panel is ideal ???



A-frames are simply aluminium or stainless steel frames that fix directly to the roof. The frames are generally lightweight, therefore, including the panel itself, on average the total weight, per panel is 25kg. If you have a solar panel ???



The JA Solar JAM54D41-440/LB is a 440W premium cell solar panel with an all black design. This n-type Double Glass Bifacial Module is very efficient and operates with extremely low LID. Solar Panels are subject to a ?150 ex VAT ???



Metal roofs combined with renewable energy technologies can create a perfect combination of lightweight, long-lasting, and affordable solution for Solar Electric and Solar Hot Water systems.. There are numerous benefits ???



The Sharp NUJC410B is a 410W solar panel with a black frame and white backsheet. The panel has a 108 half-cell design and is ideal for residential and commercial rooftop photovoltaic systems. Sharp solar panels undergo rigorous testing to ensure optimum reliability and performance. The NUJC410B panel operates with a high module efficiency of 21.0%.

BLACK GOLD STEEL PHOTOVOLTAIC PANEL



The environmental cost or "breakeven point" of solar panels is approximately 2-3 years. This means that the amount of energy needed to manufacture the panel is regenerated after 2-3 years of solar production of the solar panel. The impact is thus minimal compared to the lifespan of solar panels (25+ years).



How long do solar panel steel structures last? It can last for 25 years or more, depending on the quality of the materials and the installation process. Steel structures are durable and corrosion-resistant, and can withstand harsh weather conditions, including wind, snow, and extreme temperatures.