

# BOTSWANA FLYWHEEL ENERGY STORAGE RESEARCH



Does a flywheel energy storage system affect the environment? Flywheel energy storage system use is increasing, which has encouraged research in design improvement, performance optimization, and cost analysis. However, the system's environmental impacts for utility applications have not been widely studied.



What are flywheel energy storage systems? Flywheel energy storage systems (FESSs) have proven to be feasible for stationary applications with short duration, i.e., voltage leveling, frequency regulation, and uninterruptible power supply, because they have a long lifespan, are highly efficient, and have high power density.



Can a flywheel energy storage system be used in a rotating system? The application of flywheel energy storage systems in a rotating system comes with several challenges. As explained earlier, the rotor for such a flywheel should be built from a material with high specific strength in order to attain excellent specific energy.



What is a flywheel/kinetic energy storage system (fess)? Thanks to the unique advantages such as long life cycles, high power density, minimal environmental impact, and high power quality such as fast response and voltage stability, the flywheel/kinetic energy storage system (FESS) is gaining attention recently.



Are flywheel energy storage systems a good alternative to electrochemical batteries? Flywheel energy storage systems are considered to be an attractive alternative to electrochemical batteries due to higher stored energy density, higher life term, deterministic state of charge and ecological operation. The mechanical performance of a flywheel can be attributed to three factors: material strength, geometry, and rotational speed.

# BOTSWANA FLYWHEEL ENERGY STORAGE RESEARCH



What are the advantages of a flywheel versus a conventional energy storage system? When the flywheel is weighed up against conventional energy storage systems, it has many advantages, which include high power, availability of output directly in mechanical form, fewer environmental problems, and higher efficiency.



The flywheel energy storage system (FESS) offers a fast dynamic response, high power and energy densities, high efficiency, good reliability, long lifetime and low maintenance ???



A large capacity and high-power flywheel energy storage system (FESS) is developed and applied to wind farms, focusing on the high efficiency design of the important electromagnetic components of the FESS, such as motor/generator, radial magnetic bearing (RMB), and axial magnetic bearing (AMB). First, a axial flux permanent magnet synchronous machine ???



Some of the key advantages of flywheel energy storage are low maintenance, long life (some flywheels are capable of well over 100,000 full depth of discharge cycles and the newest configurations are capable of even more than that, greater than 175,000 full depth of discharge cycles), and negligible environmental impact.



WILMINGTON, Del., Aug. 7, 2024 /PRNewswire/ -- Allied Market Research published a report, titled, "Flywheel Energy Storage Systems Market by Component (Flywheel Rotor, Motor-Generator, Magnetic

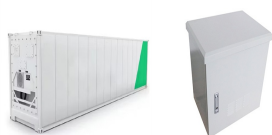
# BOTSWANA FLYWHEEL ENERGY STORAGE RESEARCH



This paper establishes the flywheel energy storage organization (FESS) in a long lifetime uninterruptible power supply. The Flywheel Energy Storage (FES) system has emerged as one of the best options.



The flywheel energy storage system is a device that uses a high-speed rotating rotor to store energy, which has high requirements for the speed of the rotor and the stability of the magnetic bearing.



Flywheel energy storage systems are feasible for short-duration applications, which are crucial for the reliability of an electrical grid with large renewable energy penetration. ???



An overview of system components for a flywheel energy storage system. Fig. 2. A typical flywheel energy storage system [11], which includes a flywheel/rotor, an electric machine, bearings, and power electronics. Fig. 3. The Beacon Power Flywheel [12], which includes a composite rotor and an electric machine, is designed for frequency



With the rise of new energy power generation, various energy storage methods have emerged, such as lithium battery energy storage, flywheel energy storage (FESS), supercapacitor, superconducting

# BOTSWANA FLYWHEEL ENERGY STORAGE RESEARCH



Flywheel energy storage systems are considered to be an attractive alternative to electrochemical batteries due to higher stored energy density, higher life term, deterministic ???



The core element of a flywheel consists of a rotating mass, typically axisymmetric, which stores rotary kinetic energy  $E$  according to (Equation 1)  $E = \frac{1}{2} I \omega^2$  [J], where  $E$  is the stored kinetic energy,  $I$  is the flywheel moment of inertia [kgm<sup>2</sup>], and  $\omega$  is the angular speed [rad/s]. In order to facilitate storage and extraction of electrical energy, the rotor ???



Thanks to the unique advantages such as long life cycles, high power density and quality, and minimal environmental impact, the flywheel/kinetic energy storage system (FESS) ???



Summary. Energy storage systems (ESSs) are the technologies that have driven our society to an extent where the management of the electrical network is easily feasible. The balance in ???



2.1. Flywheel energy storage technology overview. Energy storage is of great importance for the sustainability-oriented transformation of electricity systems (Wainstein and Bumpus, 2016), transport systems (Doucette and McCulloch, 2011), and households as it supports the expansion of renewable energies and ensures the stability of a grid fed with ???

# BOTSWANA FLYWHEEL ENERGY STORAGE RESEARCH



1 Introduction. Among all options for high energy store/restore purpose, flywheel energy storage system (FESS) has been considered again in recent years due to their impressive characteristics which are long cyclic endurance, high power density, low capital costs for short time energy storage (from seconds up to few minutes) and long lifespan [1, 2].



This can be achieved by high power-density storage, such as a high-speed Flywheel Energy Storage System (FESS). It is shown that a variable-mass flywheel can effectively utilise the FESS useable capacity in most transients close to optimal. Novel variable capacities FESS is proposed by introducing Dual-Inertia FESS (DIFESS) for EVs.



Kinetic/Flywheel energy storage systems (FESS) have re-emerged as a vital technology in many areas such as smart grid, renewable energy, electric vehicle, and high-power applications.



"Energy storage technologies range from mechanical systems like flywheel and pumped-hydrogen storage to electrochemical solutions such as lithium-ion batteries and chemical options like fuel cells," it says. "While lithium-ion batteries remain the dominant technology due to their high energy density, alternatives such as sodium-ion and



The global Flywheel Energy Storage Systems market was valued at US\$ 157.7 million in 2022 and is projected to reach US\$ 262.7 million by 2029, at a CAGR of 7.6% during the forecast period. The influence of COVID-19 and the Russia-Ukraine War ???

# BOTSWANA FLYWHEEL ENERGY STORAGE RESEARCH




Based on nonlinear busbar voltage in flywheel energy storage systems and frequent discharge characteristics, in order to improve the dynamic control derived from the analysis of a permanent magnet synchronous motor and its inverter set up model of DC bus and the active disturbance rejection principle and use the active disturbance rejection control ???



With the rise of new energy power generation, various energy storage methods have emerged, such as lithium battery energy storage, flywheel energy storage (FESS), supercapacitor, superconducting magnetic energy storage, etc. FESS has attracted worldwide attention due to its advantages of high energy storage density, fast charging and discharging ???



Primary goal of the study is to provide an exhaustive research outlook on the global flywheel energy storage market. gain yourself an upper hand with latest updates against the rest of the market. The global Flywheel Energy Storage market is expected to develop \$ 435.4 billion by 2030, at a compound annual increase in price (CAGR) of 8.3%



Flywheel Energy Storage System (FESS) has the advantages of high instantaneous power, high energy storage density, high efficiency, long service life and no environmental pollution. In this paper, the FESS charging and discharging control strategy is analyzed, and the active disturbance rejection control (ADRC) strategy is adopted and improved.



A review of flywheel energy storage systems: state of the art and opportunities. March 2021; License; V arious ???wheel energy storage research groups[96, 13, 97, 98, 33, 99, 100,



# BOTSWANA FLYWHEEL ENERGY STORAGE RESEARCH



A review of energy storage types, applications and recent developments. S. Koochi-Fayegh, M.A. Rosen, in Journal of Energy Storage, 2020 2.4 Flywheel energy storage. Flywheel energy storage, also known as kinetic energy storage, is a form of mechanical energy storage that is a suitable to achieve the smooth operation of machines and to provide high power and energy ???



Flywheel Energy Storage (FES) systems refer to the contemporary rotor-flywheels that are being used across many industries to store mechanical or electrical energy. Instead of using large iron wheels and ball bearings, advanced FES systems have rotors made of specialised high-strength materials suspended over frictionless magnetic bearings



Electrical energy is generated by rotating the flywheel around its own shaft, to which the motor-generator is connected. The design arrangements of such systems depend mainly on the shape and type



Pictured above, it has a total installed capacity of 30MW with 120 high-speed magnetic levitation flywheel units. Every 12 units create an energy storage and frequency regulation unit, the firm said, with the 12 combining to form an array connected to the grid at a 110 kV voltage level.



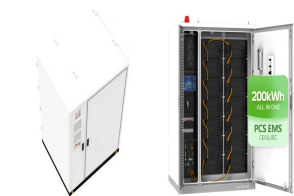
Energy storage is one of the hot points of research in electrical power engineering as it is essential in power systems. It can improve power system stability, shorten energy generation environmental influence, enhance system efficiency, and also raise renewable energy source penetrations. Battery, flywheel energy storage, super capacitor

# BOTSWANA FLYWHEEL ENERGY STORAGE

## RESEARCH



The housing of a flywheel energy storage system (FESS) also serves as a burst containment in the case of rotor failure of vehicle crash. Approaches to quantify these unknown energy shares are subject of current research. Fig. 8.30. Burst containment cylinder with applied temperature sensors and associated measurement diagram showing the



The operation of the electricity network has grown more complex due to the increased adoption of renewable energy resources, such as wind and solar power. Using energy storage technology can improve the stability and quality of the power grid. One such technology is flywheel energy storage systems (FESSs). Compared with other energy storage systems, ???



Simulation result graph. (a) State diagram of magnetic coupling transmission mechanism, (b) Angular velocity diagram of energy storage flywheel and right transmission half shaft, (c) Figure 16.