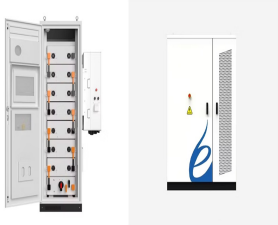


BOTSWANA JAPANESE ENERGY STORAGE POWER STATION



The coal-fired Morupule B power station is a 600MW extension of the 132MW Morupule A power station owned by Botswana Power Corporation (BPC). The Morupule B power station was partly funded by the World Bank and built by ???

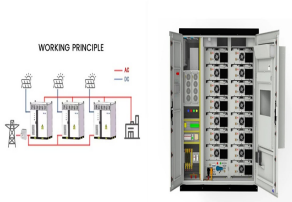
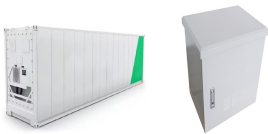


Image: Shenzhen Energy Group. A project in China, claimed as the largest flywheel energy storage system in the world, has been connected to the grid. The first flywheel unit of the Dinglun Flywheel Energy Storage Power ???



By interacting with our online customer service, you'll gain a deep understanding of the various policy of the energy storage power station in botswana featured in our extensive catalog, such ???



A one megawatt (MW) solar power station is set to be built in Botswana, the first of its kind in the country. Mmegi Online reports the P87.3 million (US\$12.7 million) facility will be built by Japanese contractors at the ???



Tesla confirmed today to Energy-Storage.news that rail operator Kintetsu is using the system to make sure that in the event of power outages, potentially caused by natural disasters to which Japan is sometimes subjected ???

BOTSWANA JAPANESE ENERGY STORAGE POWER STATION



Revised in September 2020, this map provides a detailed overview of the power sector in Botswana. The locations of power generation facilities that are operating, under construction or planned are shown by type ??? ??



The Kazunogawa Power Plant is a 1600MW underground pumped storage plant constructed by the Tokyo Electric & Power Company (TEPCO) in Japan's Yamnashi Prefecture. The project was ordered to meet peak demand, ???



The World Bank Group has approved plans to develop Botswana's first utility-scale battery energy storage system (BESS) with 50MW output and 200MWh storage capacity. The World Bank will support the 4-hour duration ???