

BOTSWANA SOLAR PANEL EARTHING SYSTEM



Problem arises if you accidentally create the "second earth fault" i.e. when you accidentally earth the other pole. If you install earthing protection then you may sometimes require one pole to be earthed. There is nothing to be gained by earthing one pole of a DC system other than if you wish to use the earth/ground as a current return path.



The type of wire used for solar panel earthing is often underestimated. It is important to use the correct size and type of wire to ensure a proper connection and effective grounding. 6. Solar panel earthing is a one ???



Home / blogs / Earthing: What It Is and Its Importance in Solar Installations. Solar installations are increasingly finding a way in homes and industries to replace the conventional forms of power. This is an encouraging sign and is a must for the protection of our environment. However, several aspects have to be considered before you proceed to install solar panels.



Welcome to the electrifying world of solar energy, where the sun isn't just a celestial body, but a powerhouse fueling our journey towards a sustainable future. But, as we harness this cosmic energy, there's an unsung ???



2.2.5 System Earthing (d.c. Conductor Earthing) There are a variety of possible PV array system d.c. earthing scenarios which can be broadly summarised as follows: No earth connection??? Hardwired connection of positive or negative conductor to earth??? Centre tapped array ??? with / without earth connection???

BOTSWANA SOLAR PANEL EARTHING SYSTEM



and register the system ! The way I understand earthing is that a mounting rail in each array of panels (6 and 3) need to be earthed, a Schlettler mounting system was used,the two strings then connected, the earth wire ???



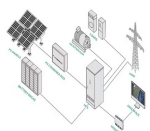
The main earthing system consists of buried bare copper conductors and rods (Note: earthing rods rarely benefit solar farms) and the above-ground interconnected metal panel support structures



Array earthing, specific to solar photovoltaic (PV) systems, involves connecting the metallic frames or mounting structures of the solar panels to the earthing system. This type of earthing ensures that, in the event of a fault or lightning strike, any stray currents are safely directed to the ground, mitigating the risk of electric shocks or



Landpower focus on producing solar earthing system over 12 years,we supply custom solutions of solar grounding systems and solar panel grounding lugs,contact us now. en. en; es; nl; ar; pl; th; vi; uk; Home; Solar Panel earthing clip is used to penetrate the anodized film both on mounting rail and mid clamp to create grounding path in solar



Installing a solar photovoltaic (PV) system customized to your energy usage allows you to take control of electricity costs while doing your part for the planet. You have a look at our products if you want to buy Solar Panels in Botswana. ???

BOTSWANA SOLAR PANEL EARTHING SYSTEM



There are now 371MW of solar farms now connected to the grid with 2,000 acres are covered in panels that are capturing solar renewable energy and exporting it to the grid. To provide an adequate and optimum cost-effective design for an earthing system of a PV Solar Farm, the following subjects need to be thoroughly considered.



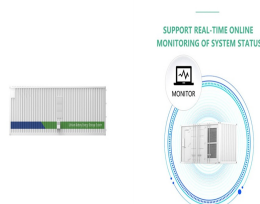
By grounding the system, you will also reduce the risk of voltage surges, which are dangerous to both people and sensitive electronic equipment that is connected to the solar panel system. Finally, connecting the solar panel system to an earthing system will also protect you by providing a safe place for electric charge to go if there is an



They swiftly dispatched an electrician to investigate the system. Lo and behold, the electrician discovered a glaring issue: there was no earthing on any of the arrays! On top of that, they detected a voltage reading between 28V and 82V ???



Benefits of earthing in solar system . Earthing(Grounding)is used for domestic and industrial electrical installations. This is due to the following benefits: It protects your equipment from damage due to sudden surges in voltage. In the case of solar panels, it improves the lifespan of PV modules by protecting them from lightning.

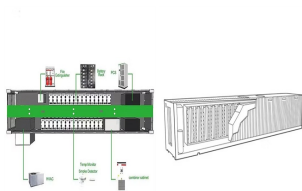


Solar Panels Prices in Botswana. Skip to content. 2024/2025 ??? Botswana Hub 2024/2025 Admission And Recruitment In So if you add all the other components, labor, design, permits, etc., as a rule of thumb assume a roof mounted system is about \$1000 a panel and a ground mounted system will run about \$1200 per panel. Can solar panels run AC?

BOTSWANA SOLAR PANEL EARTHING SYSTEM



This comprehensive post by SolarKobo is about the conditions for earthing a solar power system, the types of earthing and the considerations for earthing a system. Your solar panel may have to be earthed under special circumstances. top of page. 08182818001 | sales@solarkobo . 08062520417 | 08052025022. Chat now. Home.



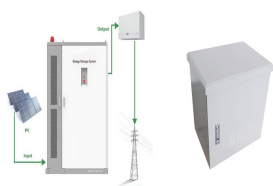
Ideally tilt fixed solar panels 23° North in Gaborone, Botswana. To maximize your solar PV system's energy output in Gaborone, Botswana (Lat/Long -24.6437, 25.9112) throughout the year, you should tilt your panels at an angle of 23° North for fixed panel installations. As the Earth revolves around the Sun each year, the maximum angle of



Installing a solar photovoltaic (PV) system customized to your energy usage allows you to take control of electricity costs while doing your part for the planet. You have a look at our products if you want to buy Solar Panels in Botswana. How Solar Panels Cut Electricity Bills. Solar panels convert free sunshine into usable direct current (DC

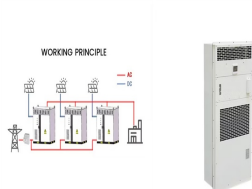


Step 5: Connect Solar Panels to Earthing System. Once you place the earthing electrodes, connect the solar panels to the grounding system. This requires establishing electrical connections between the solar panel frames or mounting structures and the grounding electrodes. Ensure that you secure all connections and keep them free from corrosion



Our mission is to deliver top-quality, cost-effective solar power solutions in Botswana and South Africa, cutting energy costs and carbon footprint. contracted Widowbird Solar Solutions to install a 102 kwp Grid tie Solar array consisting of 320 Canadian 320 watt solar panels, Fronius inverter system and all the relevant infrastructure. We

BOTSWANA SOLAR PANEL EARTHING SYSTEM



Welcome to the electrifying world of solar energy, where the sun isn't just a celestial body, but a powerhouse fueling our journey towards a sustainable future. But, as we harness this cosmic energy, there's an unsung hero working silently in the backdrop: earthing, or grounding, in solar energy systems. Often overshadowed by the more glamorous components ???



Validation testing of an entire solar farm earthing system is challenging. Current injection testing requires that a remote earth injection point be created at a distance of around 5 times the maximum dimension of the solar farm (several kilometres). This is very difficult to achieve at site for a solar PV farm earthing system.



It can be vary. If anyone installs solar panels on high rise panel stands, then it should be approx. 12 to 15 ft. The golden rule is 4 to 5 ft. maximum from solar panels. Distance: 5-10 ft. distance from solar panel installation. ???



Validation testing of an entire solar farm earthing system is challenging. Current injection testing requires that a remote earth injection point be created at a distance of around 5 times the maximum dimension of the solar farm (several ???



TN-C-S Earthing System. The Neutral and the protective earth are combined in a single conductor in a part of the system. This type of earthing is also known as multiple protective earthing. The supply system PEN conductor is earthed at two or more points and an earth electrode may be necessary at or near the consumer's installation.

BOTSWANA SOLAR PANEL EARTHING SYSTEM



They swiftly dispatched an electrician to investigate the system. Lo and behold, the electrician discovered a glaring issue: there was no earthing on any of the arrays! On top of that, they detected a voltage reading between 28V and 82V from the array frames to the ground. The technician explained that proper earthing of the solar panel



Copper Bonded Rods trader from Sangrur - Sandhu Solar House System is leading Supplier of Bifacial Solar Panel in Punjab, Lighting Arrester Wholesale Supplier +91-9517348321, +91-9814180021
haprindersandhu2@gmail



Test the earthing system: Once the earthing system has been installed, it should be tested to ensure that it provides an effective earthing connection for the panels and other equipment. This may involve using a test instrument, such as a ground resistance tester, to measure the earthing resistance at different points around the solar farm.



When installing a solar panel system, one of the most important aspects to consider is the earthing system. It is an essential component that guarantees the safety of the system and optimises its operation.. In this guide, we will explain ???



The DB earth and PV Box Surge Protector Earths are joined but may not touch the Solar Panel earth Edited February 17, 2022 by Gidsie. HiTech; 1 Quote; phidz. Posted February 17, 2022. phidz. Members; 170 Location Lightning Protection System regulations and Solar Panel Grounding Regulations are completely different things, solar panels are