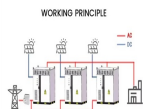


BOX-TYPE ENERGY STORAGE BOILER



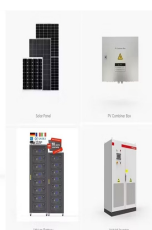
Compare the results in our reviews of the best gas and oil boiler brands. Video: how to buy the best boiler. When buying a new boiler, you need to consider what type you want, what size of boiler you need, whether your heating system needs anything doing to it while you're installing a new one, and which brand will be most reliable.



With the jet type electrode boilers, there are no combustion hazards because there are no flames, fumes, fuel lines or storage tanks, which minimizes the risk of explosions and fires. In case of an electrical short, the breaker that protects the high voltage circuit trips in a matter of milliseconds, protecting the boiler and the electrical



The storage combi boiler is engineered for homes that don't have enough space to store the bulky tanks that come with system boilers but require more hot water than a standalone combi can offer. Glow Worm Energy 35 Store Combi Boiler . The Energy 35 Store boiler is a great option for homes that want a balance between portability and a



Most of the power-to-heat and thermal energy storage technologies are mature and impact the European energy transition. However, detailed models of these technologies are usually very complex, making it challenging to implement them in large-scale energy models, where simplicity, e.g., linearity and appropriate accuracy, are desirable due to computational ???

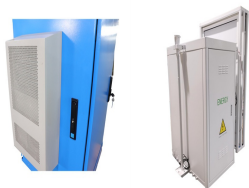


Storage combi boiler = Combi boiler with storage tank for hot water. A standard combi boiler draws cold water directly from the mains supply, heating it on demand (when you turn on a tap or shower). Storage combi boilers also draw cold water from the mains supply, but hot water is fed from the internal tank. The boiler then refills it is used.

BOX-TYPE ENERGY STORAGE BOILER



2 ? It is still a great challenge for dielectric materials to meet the requirements of storing more energy in high-temperature environments. In this work, lead-free ???



Choosing the correct boiler and central heating system for your home can be a headache. Although your boiler is integral to your hot water and heating supply, it's unlikely you will think about it until something goes wrong, and you either need to book a repair or start the search for a new boiler.. We all know a good boiler is reliable, efficient and reasonably priced.



For the energy system in the future, coal-fired power plants (CFPPs) would transfer from the base load to the grid peak-shaving resource [6].However, the power load rate of the CFPPs usually cannot fall below 30 % of the rated load (i.e., 30 % THA, THA: thermal heat acceptance condition) due to the limitation from the ability of steady-state combustion on the ???



The Viessmann Vitodens 111-w storage combi boiler is one of the best storage combi boilers available. The Vitodens 111-w storage is a cross between a system boiler and a combi boiler whereby the external hot water cylinder is inside the boiler itself rather than in an airing cupboard or loft space.



A combi storage boiler is larger than a standard combi boiler because it has a storage cylinder, something a combi boiler doesn't have. Some combi storage boilers are wall-mounted units, and the boiler dimensions will depend on the size of its cylinder. The cylinder size determines how much hot water you can access

BOX-TYPE ENERGY STORAGE BOILER



Dry Core Storage. Dry Core Storage boilers work in the same way as storage heaters, but they are compatible with Economy 7 tariffs to get cheaper energy at night. The boilers heat bricks over night. Heat is released into the water for hot water and central heating. Solar compatible. An immersion heater can be used to heat water in a storage tank.



inclusive review of energy, exergy, economic and environmental analysis of box type, and recommendation of the suitable phase change material that can be used in storage-based solar cookers to



By integrating phase change energy storage, specifically a box-type heat bank, the system effectively addresses load imbalance issues by aligning building thermoelectric demand with system output. This approach increases energy storage density, improves space ???



A well-chosen boiler ensures a cozy living space and contributes to managing energy costs and reducing environmental impact. The market offers a variety of boiler systems, each with its own set of features, fuel types, and methods of distributing heat. Understanding these differences and how they align with your household needs is paramount.



ABSTRACT. The main aim Flgure 9 of this work is to design, develop and experimentally test the performance of an improved box-type solar cooker with thermal energy storage. The improvement features are the ability to concentrate solar rays and store thermal energy. The improved solar cooker became 20% less in inner surface area compared to the ???

BOX-TYPE ENERGY STORAGE BOILER



A properly sized furnace or boiler will operate most efficiently, and you'll want to choose a dependable unit and compare the warranties of each furnace or boiler you're considering. When shopping for high-efficiency furnaces and boilers, look for the ENERGY STAR(R) label.



A storage combi boiler is a type of boiler that combines the benefits of a traditional combi boiler with an internal hot water cylinder, making it suitable for higher hot water demands. Storage combi boilers are highly energy-efficient, as they only heat the water that is actually needed for use. This, in turn, means a reduction in energy



A guide to energy storage v1.2 12 June 2017 1/11 A guide to energy storage Your standard hot-water cylinder in a regular boiler system is a heat storage device known as a thermal store. Larger cylinders of this type are also often called buffers or accumulator tanks. Thermal stores store heat in the form of hot water. This heat energy will stay



By integrating phase change energy storage, specifically a box-type heat bank, the system effectively addresses load imbalance issues by aligning building thermoelectric demand with system output. This approach increases energy storage density, improves space utilization efficiency, and streamlines maintenance.



Heating systems are normally designed for the coldest times of the year. However, boilers very rarely have to work at full capacity. For most of the heating period, the average heat consumed is less than 50% of the rated heat output. A storage tank ensures an economic and environmentally-friendly use of energy in spite of boiler sizing

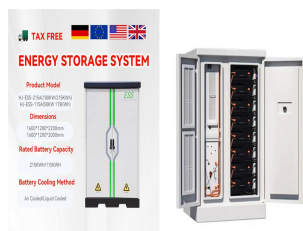


Storage tanks may waste energy due to the nature of retaining and heating water constantly. Whether a boiler needs a storage tank depends on the type of boiler system. Combi (combination) boilers heat water directly from the mains on demand and do not require a storage tank.

BOX-TYPE ENERGY STORAGE BOILER

System and conventional (regular) boilers, however, are designed

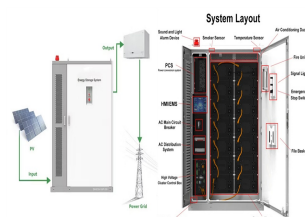
BOX-TYPE ENERGY STORAGE BOILER



This is seasonal thermal energy storage. Also, can be referred to as interseasonal thermal energy storage. This type of energy storage stores heat or cold over a long period. When this stores the energy, we can use it when we need it. Application of Seasonal Thermal Energy Storage. Application of Seasonal Thermal Energy Storage systems are



The Vitodens 222-F 19kW is a condensing gas or LPG storage combi boiler. The latest design, released in 2021, is sleek and would look good in any home. The 222-F is a Viessmann boiler available in three power outputs and has 1:17 modulation range. The main feature of the Vitodens 222-F is the internal 100-litre hot water tank.



The electric boiler range, incorporating hot water storage, provide both heating and hot water. Where this electric boiler range is different to an electric combination boiler or instantaneous heater, the hot water storage allows for energy storage that can be charged using low cost off-peak electricity periods such as economy 7 and economy 10 or smart time of use tariffs, in ???



This type of boiler can be used as a substitute for a system boiler in households with insufficient space. With this heating system, the hot water tank is built-in, so even if you have space, you could remove a hot water cylinder and create space. A storage combi boiler has a lower energy consumption than a combi boiler, but the long-term



Viessmann Vitodens 111-W. The Viessmann Vitodens 111-W is a technologically advanced combi storage boiler with enough capacity to support most residential properties.. There are three advantages to the Vitodens 111-W. Firstly, it uses the most advanced technology to run at 94% energy efficiency as one of the most efficient boilers on the market. Secondly, ???