

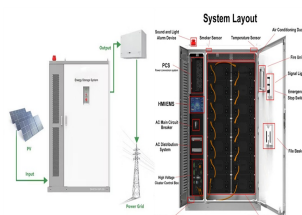
BUILDING MICRO ENERGY STORAGE POWER STATION



To address this issue two schemes for cryogenic energy storage power plant suitable for a micro-grid system in the large residential building are proposed. The first scheme upgrades the existing oxygen liquefaction plant by integrating it with a power recovery cycle which combines both open and closed Rankine cycles using the produced LN2



Small and medium-sized pumped storage power station is the collective name of medium and small pumped storage power station, which refers to the pumped storage power station with a total storage capacity of less than 100 million cubic meters in the reservoir area and an installed capacity of less than 300,000 kW, and the approval and construction time of such ???



With the increasing global demand for sustainable energy sources and the intermittent nature of renewable energy generation, effective energy storage systems have become essential for grid stability and reliability. This paper presents a comprehensive review of pumped hydro storage (PHS) systems, a proven and mature technology that has garnered significant interest in ???



The processes involved in power-to-power energy storage solutions have been discussed in Section Power-to-hydrogen-to-power: production, storage, distribution and consumption. The aim of this section is to estimate the round-trip efficiency of micro power-to-power energy storage solutions using micro-gas turbines, shown schematically in Fig. 1.



Liquid air energy storage (LAES) has been regarded as a large-scale electrical storage technology. In this paper, we first investigate the performance of the current LAES (termed as a baseline LAES) over a far wider range of charging pressure (1 to 21 MPa). Our analyses show that the baseline LAES could achieve an electrical round trip efficiency (eRTE) ???

BUILDING MICRO ENERGY STORAGE POWER STATION



Photovoltaic power generation is the main power source of the microgrid, and multiple 5G base station microgrids are aggregated to share energy and promote the local digestion of photovoltaics [18]. An intelligent information- energy management system is installed in each 5G base station micro network to manage the operating status of the macro and micro ???



To address this issue two schemes for cryogenic energy storage power plant suitable for a micro-grid system in the large residential building are proposed. The first scheme upgrades the existing oxygen liquefaction plant by integrating it with a power recovery cycle which combines both open and closed Rankine cycles using the produced LN2.



Energy storage through pumped-storage (PSP) hydropower plants is currently the only mature large-scale electricity storage solution with a global installed capacity of over 100 GW. To facilitate the study of a small pumped-storage power plant, an in-house software program was developed using Python 3.7 and the PySimpleGUI library (version 4



The Bath County Pumped Storage Station has a maximum generation capacity of more than 3 gigawatts (GW) and total storage capacity of 24 gigawatt-hours (GWh), the equivalent to the total, yearly electricity use of about 6000 homes.. Construction began in March 1977 and upon completion in December 1985, the power station had a generating capacity of ???



Because buildings have certain heat capacity, when the thermal power changes, the indoor temperature has a relative lag of change, while the feeling to comfortable temperature of the human body lies within a certain range. Based on the energy storage characteristics of buildings, this paper structures the optimal dispatch model of a combined cooling, heating, and ???

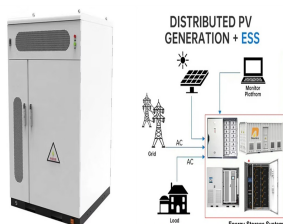
BUILDING MICRO ENERGY STORAGE POWER STATION



Besides, the building wall energy storage capacity is always in the range of 0.2 ?? 1/4 0.8 on the all-weather scale. the power station output represents the electric energy generated by the microgrid power smart building micro-grid users meet the demand for conventional electrical loads by purchasing the right amount of electricity from



This article provides a comprehensive guide on battery storage power station (also known as energy storage power stations). These facilities play a crucial role in modern power grids by storing electrical energy for later use. The guide covers the construction, operation, management, and functionalities of these power stations, including their contribution to grid stability, peak ???



stages of a micro-hydro project???from fi rst considering the idea all the way through to producing power. Introduction T here is a great deal of interest today in using such renewable energy sources as solar power, wind, biomass, and fl ow-ing water to produce power to run farm equip-ment. Many of the technologies for converting



On the contrary, urban micro hydro systems (UMHS) with capacity usually ranging from 5 kW to 100 kW [28], including micro hydro power (MHP) [29, 30] and micro pumped-storage (MPS) [5, 31], come with no geographical limitation as long as municipal elements exist. Excess pressure within UWS and the gravitational energy of highrise's height ???



Energy storage has attracted more and more attention for its advantages in ensuring system safety and improving renewable generation integration. In the context of China's electricity market restructuring, the economic analysis, including the cost and benefit analysis, of the energy storage with multi-applications is urgent for the market policy design in China. This ???

BUILDING MICRO ENERGY STORAGE POWER STATION



the grid or a power plant and then discharges that energy at a later time to provide electricity or other grid services when needed. Several battery building additional pumped-hydro storage or transmission, increasing conventional generation flexibility, Figure 1: U.S. utility-scale battery storage capacity by .



Microgrids play a crucial role in the transition towards a low carbon future. By incorporating renewable energy sources, energy storage systems, and advanced control systems, microgrids help to reduce dependence on fossil fuels and ???



With the new energy represented by wind and photovoltaic entering the fast lane of development, energy transformation is now entering a new stage of development (Evans et al., 2018; Tlili, 2015; Hao et al., 2023). As an important guarantee for supporting the rapid development of a high proportion of new energy and building a new type of power system with ???



The upper reservoir, located 150m above the lower reservoir level, will have a storage capacity of 880 million gallons. Hatta pumped hydropower plant details. Hatta pumped storage power plant will comprise a shaft-type powerhouse equipped with two pump-turbine and motor-generator units of 125MW capacity each.



Pumped storage hydropower (PSH) is a type of hydroelectric energy storage. It is a configuration of two water reservoirs at different elevations that can generate power as water moves down from one to the other (discharge), passing through a turbine.

BUILDING MICRO ENERGY STORAGE POWER STATION



This study aims to symmetrically improve the economy and environmental protection of combined cooling, heating and power microgrid. Hence, the characteristics of configuration ways of energy storage devices in traditional combined cooling, heating and power systems are analyzed, and a scheme for the operator to establish an energy storage station is ???



2.2 Extra equipment needed besides the power plant. 2.2.1 Energy storage apparatus. 2.2.2 Safety equipment. Thermal energy storage; Tropical green building; Waste-to-energy; Zero heating building; Zero-energy building; Renewable energy infrastructure for energy storage and power conversion and a hook-up to the regular electricity grid



According to the BP Energy report [3], renewable energy is the fastest-growing energy source, accounting for 40% of the increase in primary energy. Renewable energy in power generation (not including hydro) grew by 16.2% of the yearly average value of the past 10 years [3]. Taking wind energy as an example, the worldwide installation has reached 539.1 GW in ???



Overview Construction Safety Operating characteristics Market development and deployment See also



Large-scale integration of renewable energy in China has had a major impact on the balance of supply and demand in the power system. It is crucial to integrate energy storage devices within wind power and photovoltaic (PV) stations to effectively manage the impact of large-scale renewable energy generation on power balance and grid reliability.

BUILDING MICRO ENERGY STORAGE POWER STATION



For 5G base stations equipped with multiple energy sources, such as energy storage systems (ESSs) and photovoltaic (PV) power generation, energy management is crucial, directly influencing the operational cost. Hence, aiming at increasing the utilization rate of PV power generation and improving the lifetime of the battery, thereby reducing the operating cost ???