

BUILDING PHOTOVOLTAIC PANELS ON FARMLAND



Are solar panels a viable option for farm buildings? Solar panels for farm buildings High and volatile electricity costs are adding to the escalating overheads faced by UK farmers which affect profitability. Farm buildings can provide large,uncomplicated roof spaces which are ideal for installing solar PV,helping farmers to reduce their energy bills significantly.



Should you install solar panels on your farm? By installing solar panels on your farm,you???re essentially turning sunlight into a source of clean,sustainable,and cost-effective energy. Discover our solar PV solutions exclusively designed for agricultural buildings and farms of all types and sizes,whether you need ground-mounted panels or roof installations.



Are solar panels for farms a good investment? Geo Green Power specializes in large-scale solar panel systems for farms and agriculture. There are significant financial returns to be achieved by generating and using your own electricitywith solar farms. Interested in the benefits and costs of solar panels for farms?



How do I choose a solar panel provider for farms? When selecting a provider for solar panels for farms, consider their experience in agricultural installations and customer reviews regarding product quality and support services. Conclusion: Embracing Solar Panels for Sustainable Farming The future looks bright for farmers considering solar panels for farms!



Can solar panels be installed on agricultural buildings? Installing solar panels on the roofs of agricultural buildingsis a great way to produce green energy for your farmwhile cutting costs,providing a reliable energy source,and reducing your carbon footprint. Farming buildings are typically large enough to accommodate a large number of solar panels.

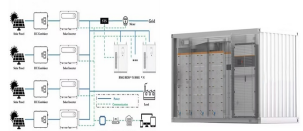
BUILDING PHOTOVOLTAIC PANELS ON FARMLAND



Can you build a solar farm on agricultural land? While obtaining planning consent for ground-mounted solar farms on agricultural land can be challenging???, Andrew Shirley, our Head of Rural Research, advises it can ???easily take ten years to get a scheme off the ground??? - rural properties often feature large barns with roofs suitable for solar panel installations.



Installing rooftop solar panels on the roof of your agricultural buildings is a great way to produce green energy for your farm, whilst cutting costs, providing a reliable energy source, and ???



As the UK battles with the effects of climate change, solar panels have become a viable mainstream solution to the fossil fuel crisis. In 2019, roughly 39% of electricity in the UK was produced using fossil fuels, and 40% of the UK's energy came from renewables, compared to 10 years ago when fossil fuels accounted for 80% of the UK's energy production.



The US Department of Agriculture helped support the installation of an 896-panel solar array in an unfarmable section of a hay farm in Pennsylvania. This solar farm was not a part of the recent



The best place to build solar farms is on flat land or south-facing slopes; There are currently over 1,000 solar farms in the UK, with a combined capacity of 8.67 gigawatts (GW). And that number's set to grow, especially ???

BUILDING PHOTOVOLTAIC PANELS ON FARMLAND



If the land disruption associated with building a solar panel farm is expected to exceed 1 acre in size, NPDES permit coverage is required. For solar panel farms that disturb more than one acre, a stormwater management permit may be required. This permit ensures proper erosion and sediment control during construction activities.



A farm owner decides to install ground-mounted solar panel arrays on their farm. The owner wants to support the bank of panels with a single post to minimise the disruption on their land due to required excavation. A building consent is required because the owner has opted for a single post or column to support the solar panel arrays.



What Is A Solar Panel Farm? Solar panel farms are where photovoltaic (PV) panels are placed on the grounds to utilize the sun's energy and convert it into electricity. The electricity is distributed among power grids to make electricity available to consumers. These solar panel farms are also called solar parks and photovoltaic power stations.



Environmental Considerations in Solar Farm Development A. Balancing Land Use and Conservation. Developing large solar farms requires a lot of land, which can lead to habitat loss and fragmentation, affecting local plants and animals. It's important to find a balance between building solar farms and preserving natural habitats.



solar PV panels; solar batteries; inverters; utility meters; electrical grid connections; power diverters; Solar PV panels can only be installed on: farm building rooftops; irrigation reservoirs;

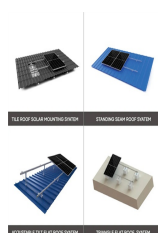
BUILDING PHOTOVOLTAIC PANELS ON FARMLAND



Solar farms can earn this much because solar panels last 25-30 years. Due to necessary expenditures, these figures will vary. A solar farm on your property could be profitable, but some restrictions must be considered first. Before building a solar farm, you must secure all licenses and permits. Starting construction requires this.



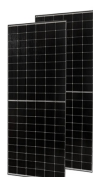
Community Solar Farms. Community solar farms offer higher energy output than simply installing solar panels on your rooftop. Solar farms are also more cost-effective, running between \$0.80 to \$1.36 per watt, and solar panel installation costs about \$2.50 to \$3.50 per watt. These large-scale projects usually provide 5 megawatts or less, and a megawatt can ???



While that project is incomplete and ongoing, Reuters found that around 0.02% of all cropland in the continental U.S. intersected in some way with large-scale, ground-based solar panel sites they



Ground mounted solar panel systems of greater than 9m sq. (4-5 large solar panels) require planning permission. This means that all solar farms require planning permission. In order to get approval for solar farms in the UK, ???



Building solar farms can eat up hundreds of acres of sprawling land for solar panel and battery installation and the infrastructure needed to support it. For illustration purposes, a five-megawatt farm requires 25 acres or ???

BUILDING PHOTOVOLTAIC PANELS ON FARMLAND



A solar farm is a large-scale solar power generation facility that captures and converts the sun's energy into electricity.. It typically comprises a series of solar panels, also known as photovoltaic (PV) panels, designed to ???



What are the benefits of co-locating solar and crop production? According to the DOE's Solar Futures Study, the United States will need to double the amount of solar energy installed per year between 2025 and 2030 to decarbonize the ???



The structure of a roof that supports solar photovoltaic panels or modules shall be designed to accommodate the full solar photovoltaic panels or modules and ballast dead load, including concentrated loads from support frames in ???



That means the panels should be placed on south-facing land free of shadow-casting obstructions. Farm location: Solar developments must be connected to the electrical grid to supply power to consumers. If a solar farm is located further from existing infrastructure, building new infrastructure will cost more and take longer.



The average price of solar panel modules is around ?200,000 per megawatt produced. And when you're looking for land, know that solar panel farms need quite a lot of it (compared to other forms of power generation) - for a 1MW farm, you'll likely need 5 - 8 acres. be aware that the rigorous planning procedures, where the building

BUILDING PHOTOVOLTAIC PANELS ON FARMLAND



A 4kW agricultural solar farm project will cost in the region of £4,000 where as a 50kW solar photovoltaic panel installation can cost about £30,000 in the UK both including installation and VAT. A 200kW agricultural solar panel system comprising of 800 solar panels generating enough power to run 40 homes and save 100 tonnes of CO2 every year, can cost around £180,000 ???



Farmland and solar panel station on a sunny day. Location place South Moravia region, Czech Republic, Europe. Photo wallpaper. Saving environment, save clean planet, ecology concept. Aerial view of farm building with photovoltaic solar panels mounted on rooftop for producing clean ecological electricity. Production of renewable energy concept.



While obtaining planning consent for ground-mounted solar farms on agricultural land can be challenging ??? Andrew Shirley, our Head of Rural Research, advises it can "easily take ten years to get a scheme off the ground" - rural properties often feature large barns with roofs suitable for solar panel installations.



Many farmers will tell you that solar panel farms do not put their land at risk. They are, in fact, positive about solar technology, as they can use their land for dual purposes: energy generation and food production. On the latter point, many solar panel farmers have noticed that their farm is now more productive than before. Previously



Solar parks or farms are large-scale installations of solar PV panels mounted on frames which are built on the ground, covering anything from 1 acre to 1000 acres. They are a nature friendly ???

BUILDING PHOTOVOLTAIC PANELS ON FARMLAND



Solar farms on rural land offer a promising path towards economic savings and environmental sustainability. While the upfront costs and, for ground-mounted solar, the setup process may be a challenge, the long ???



The process of building a solar farm. To build a solar farm, the first requirement is land???quite a bit of land. PV power stations take up more room than most kinds of power plants. They need space for the panels themselves, other equipment such as inverters, and space to access the equipment for maintenance.



Solar panel building regulations. if the building is on Article 2(3) designated land and the equipment is not installed on a wall or a roof slope which fronts a highway; if there is more than one ground mounted system within the ???



building (e.g. on the rooftop) that are usually < 1 MW (megawatt) in capacity and may act autonomously from the grid. Utility scale developments are larger (> 1 MW), more To investigate ecological information presented by solar panel and solar farm manufacturers and supplier and summarise this information. 6) To investigate planning



Solar farms typically comprise large collections of photovoltaic panels that span over 100 acres of land in total. Now, they might take up a fair deal of space. However, solar energy does not produce notable air pollution or greenhouse gases during production.

BUILDING PHOTOVOLTAIC PANELS ON FARMLAND



There are a large number of formally approved solar panel installations in conservation areas, including on roofs that face the road. Solar Panel Building Regulations and SAP calculations, UK Guide; On this page. Written-by. Janet Richardson. 225,000GWh Of Power Can Be Generated From Wind And Solar On 3% Of UK Land May 08, 2024. Related