

BURKINA FASO BESS C RATE



- TELECOM CABINET
- BRAND NEW ORIGINAL
- HIGH EFFICIENCY

How resilient is Burkina Faso? ???Burkina Faso continues to demonstrate resilience,despite the security and humanitarian crises plaguing the country. These various crises are compounded by the country???'s vulnerability to climate change,???' says Maimouna Mbow Fam,World Bank Country Manager for Burkina Faso.



- TELECOM CABINET
- BRAND NEW ORIGINAL
- HIGH EFFICIENCY

Does Burkina Faso have financial resilience to climate shocks? The April 2023 edition focused on building financial resilience to climate shocks. The report also highlights findings specific to Burkina Faso, which were drawn from the Country Climate and Development Report (CCDR) for the G5 Sahel region.



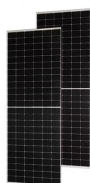
- TELECOM CABINET
- BRAND NEW ORIGINAL
- HIGH EFFICIENCY

Does Burkina Faso have a food crisis? OUAGADOUGOU,June 12,2023 ??? According to the latest Burkina Faso Economic Update,economic growth slowed to 2.5% in 2022,with the country posting the highest inflation rate in the West African Economic and Monetary Union (WAEMU),thereby exacerbating food insecurity.



- TELECOM CABINET
- BRAND NEW ORIGINAL
- HIGH EFFICIENCY

The benchmark interest rate in Burkina Faso was last recorded at 5.50 percent. Interest Rate in Burkina Faso averaged 4.22 percent from 2010 until 2024, reaching an all time high of 5.50 percent in December of 2023 and a record low of 3.50 percent in September of 2013.



The Corporate Tax Rate in Burkina Faso stands at 27.50 percent. Corporate Tax Rate in Burkina Faso averaged 27.50 percent from 2023 until 2024, reaching an all time high of 27.50 percent in 2024 and a record low of 27.50 percent in 2024. source: General Direction of Taxes



Chart and table of the Burkina Faso birth rate from 1950 to 2024. United Nations projections are also included through the year 2100. The current birth rate for Burkina Faso in 2024 is 35.510 births per 1000 people, a 1.08% decline from 2023.; The birth rate for Burkina Faso in 2023 was

BURKINA FASO BESS C RATE

35.896 births per 1000 people, a 1.26% decline from 2022.; The birth rate for Burkina Faso in ???

BURKINA FASO BESS C RATE



Burkina Faso attracts migrants from Cote d'Ivoire, Ghana, and Mali, who often share common ethnic backgrounds with the Burkinabe. Despite its food shortages and high poverty rate, Burkina Faso has become a destination for refugees in recent years and hosts about 26,000 Malian refugees as of July 2022. (2018)



Burkina Faso BF: Real Interest Rate data was reported at 6.421 % pa in Dec 2021. This records an increase from the previous number of 0.068 % pa for Dec 2020. Burkina Faso BF: Real Interest Rate data is updated yearly, averaging 4.944 % pa (Median) from Dec 2005 to 2021, with 17 observations. The data reached an all-time high of 7.578 % pa in 2013 and a record low of ???



Currency guide to Burkina Faso and West African franc (XOF) rates and money saving tips - Travel Money & Transfers. USD/XOF 624.60 : -0.4% 14d-highs To get a good (and fair) exchange rate when sending money to Burkina Faso you need to find and compare exchange rates for International Money Transfers (IMTs).



Burkina Faso - Mortality rate Mortality rate, under-5 (per 1,000 live births) The value for Mortality rate, under-5 (per 1,000 live births) in Burkina Faso was 85.00 as of 2020. As the graph below shows, over the past 60 years this indicator reached a maximum value of 345.50 in 1960 and a minimum value of 85.00 in 2020.



The development objective of the Solar Energy and Access Project for Burkina Faso is to increase access to electricity services in selected rural areas and the . Skip to Main Navigation. Trending Data Non-communicable diseases cause 70% of global deaths. Who We Are

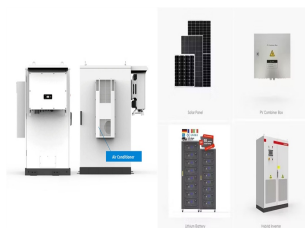
BURKINA FASO BESS C RATE



2 ? Burkina Faso gold price latest current gold rates in Burkina Faso today 24 hour realtime spot gold price. The most current gold price in West African CFA franc 24,22,18,14,10,6 carat. SPOT GOLD 2646.68 \$ 0.12% (3.20) High:2651.72 | Low:2643.40. PER GRAM 85.1023 \$



Burkina Faso. Completion date. 2021. Work scope: A Photovoltaic Power Plant of 25MWc. An Battery Energy Storage System (BESS) of 5MW/20MWh. A 33kV substation. A Transmission line of 33KV. Extension of the connection substation of 90kV. Services: Feasibility study, including:



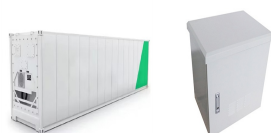
View Burkina Faso's Burkina Faso BF: Official Rate: Period Average: USD per National Currency from Jan 1957 to Aug 2018 in the chart: max 1y 5y 10y. Apply. max 1y 5y 10y. Apply Official Exchange Rate: Period Average: Local Currency to USD. 1987 - 2024 | Monthly | USD/XOF | World Bank. Official Exchange Rate: Period Average: Local Currency to



The national coverage rate has increased to 50%, compared to a national electrification rate of 25.24% in 2022. The rural electrification Burkina Faso benefits from daily sunlight of 5.5 KWh/m2 for 3000 to 3500 hours per year, with a uniformly distributed solar resource across



5 ? The IMF Executive Board today completed the second review under Burkina Faso's Extended Credit Facility arrangement, thereby enabling an immediate disbursement of about ???



Calculate the exchange rate. If traveling to Ouagadougou you need to exchange your currency for the CFA Franc BCEAO. Other attractions include the National Museum of Burkina Faso, the Moro-Naba Palace (site of the Moro-Naba Ceremony), the National Museum of Music, and several

BURKINA FASO BESS C RATE

craft markets. Parks The Bangr-Weoogo urban park (area: 2.63 km²

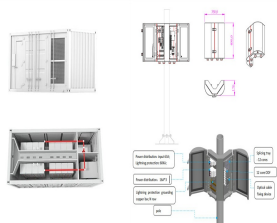
BURKINA FASO BESS C RATE



View Burkina Faso's BF: Interest Rate Spread from 2005 to 2021 in the chart: max 1y 5y 10y. Apply. max 1y 5y 10y. Apply. BF: Real Interest Rate. 2005 - 2021 | Yearly | % pa | World Bank. BF: Real Interest Rate data was reported at 6.421 % pa in 2021. This records an increase from the previous number of 0.068 % pa for 2020.



Download scientific diagram | Efficiency of different batteries across C-rates at 25 o C [2] from publication: Comparison of lead-acid and lithium ion batteries for stationary storage in off-grid



la disponibilit  de l' nergie solaire au Burkina Faso, et la mobilisation des financements priv s. Le Projet comprend trois (03) principales composantes qui seront mises en  uvre par le Minist re de l'Energie, l'Agence Burkinab  de l'Electrification Rurale (ABER), et la Soci t  Nationale d'Electricit  du Burkina (SONABEL).



Inflation Rate in Burkina Faso decreased to 3.60 percent in November from 6.30 percent in October of 2024. Inflation Rate in Burkina Faso averaged 2.44 percent from 2000 until 2024, reaching an all time high of 18.20 percent in July of 2022 and a record low of -5.40 percent in September of 2019.



FGM/C Legislation in Burkina Faso. In 1996 Burkina Faso became one of the first African countries to introduce a national law against FGM/C (Article 380 of the Penal Code). 23,580,237 (as at 24 August 2024), with a 2.4% growth rate (2024 est.) Infant Mortality. 47 deaths per 1,000 live births (2024 est.) Maternal Mortality. 264 deaths per



According to the latest Burkina Faso Economic Update, economic growth slowed to 2.5% in 2022, with the country posting the highest inflation rate in the West African Economic and Monetary Union (WAEMU), ???

BURKINA FASO BESS C RATE



Burkina Faso [a] is a landlocked country in West Africa, [6] bordered by Mali to the northwest, Niger to the northeast, Benin to the southeast, Togo and Ghana to the south, and Ivory Coast to the southwest. It covers an area of 274,223 km² (105,878 sq mi). In 2021, the country had an estimated population of approximately 23,674,480. [14] Previously called the Republic of Upper ???



The name Burkina Faso, which means "Land of Incorruptible People," was adopted in 1984. Burkina Faso is bounded by Mali to the north and west, Niger to the northeast, Benin to the southeast, and C?te d'Ivoire, Ghana, ???



The current value of the Interest Rate in Burkina Faso is 5.5 %. The Interest Rate in Burkina Faso decreased to 5.5 % on 6/1/2024, after it was 5.5 % on 5/1/2024. From 12/1/2010 to 6/4/2024, the average GDP in Burkina Faso was 4.18 %. The all-time high was reached on 12/16/2023 with 5.5 %, while the lowest value was recorded on 9/4/2013 with 3.5 %.



The World Bank has approved \$168 million financing towards Burkina Faso's efforts to increase access to electricity in rural areas and support the country's transition to clean energy. manager for Burkina Faso said the new project is fully in line with the Bank's Sahel strategy to double electricity rates by 2025. Their efforts are



View Burkina Faso's BF: Literacy Rate: Adult Female: % of Females Aged 15 and Above from 1975 to 2022 in the chart: max 1y 5y 10y. Apply. max 1y 5y 10y. Apply BF: Literacy Rate: Adult Male: % of Males Aged 15 and Above. 1975 - 2022 | Yearly | % | World Bank. BF: Literacy Rate: Adult Male: % of Males Aged 15 and Above data was reported at 40.070