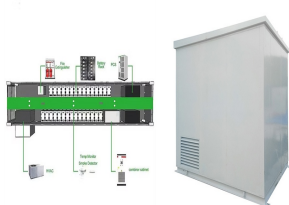


C-SHAPED STEEL AND PHOTOVOLTAIC PANEL INSTALLATION



How to install solar panels on steel buildings. Steel frame or roof truss, purlins, and roof panels are essential for color steel roofing. The installation method of color steel plates is directly related to the load-bearing capacity of steel frames ???



The C-shaped steel ground mounting system is a robust and versatile solution designed specifically for installing solar photovoltaic panels on the ground. This system plays a crucial role in maximizing solar energy capture and optimizing the performance of PV installations.



It can be combined with the installation site to provide different alignment direction and inclination. It is made of high quality carbon steel, which has high strength performance and can be adapted to larger span, and the system is stable. Waterproof and non-waterproof designs are available.



Elevate your solar installation with our versatile Solar Panel Mounting Brackets. Ideal for metal, flat, and corrugated roofs, our brackets offer sturdy support. As a leading manufacturer, we provide quality solutions for every solar need. Explore our ???



Dome Solar photovoltaic panel mounting systems can be adapted to a wide range of steel roof deck from leading manufacturers: BACACIER, TATA STEEL ??? MONOPANEL, ARCELORMITTAL CONSTRUCTION, etc. They come in different lengths and can be custom-made.

C-SHAPED STEEL AND PHOTOVOLTAIC PANEL INSTALLATION



Overview Quick Details Place of Origin Hebei, China Brand Name DS Model Number DS Wind Load 60M/S Snow Load 1.4KN/M2 Warranty 2 years Package Wooden Pallet Material AL6005-T5 and Stainless steel SUS304 Product name Photovoltaic support Surface Treatment Anodized Supply Ability



When it comes to selecting the material for photovoltaic (PV) support structures, it generally adopts Q235B steel and aluminum alloy extrusion profile AL6005-T5. Each material has its advantages and considerations, and the choice depends on various factors. Let's compare steel and aluminum for PV support structures: 1.Strength and Durability



The metal core is the main body of the connector and the most important flow path. At present, the vast majority of photovoltaic connectors on the market use a "U"-shaped metal core, which is stamped and formed from a ???



Hot-Dip Galvanized Steel photovoltaic bracket. The installation area of Hot-Dip Galvanized Steel photovoltaic bracket can be ground screw, concrete foundation, C-shaped steel pile or H-shaped steel without geographical constraints, applicable materials have high corrosion resistance. Compatible with most modules and most wind loads & snow loads.



Large-Scale Ground Photovoltaic Support Project Solar Panel Installation System Zinc-Aluminum-Magnesium U-Shaped Steel U-Shaped Guide Rail, Find Details and Price about C-Channel Zinc Aluminum Magnesium from Large-Scale ???

C-SHAPED STEEL AND PHOTOVOLTAIC PANEL INSTALLATION



Structural Integrity: The C-shaped steel design provides exceptional structural integrity, ensuring stability and safety for the PV panels over time. **Versatility in Installation:** This system is suitable for various terrains, including flat and sloped surfaces, making it highly versatile for different installation sites.



With a flat roof, panels need to be tilted towards the sun for optimal production, so your solar installer will need to install slanted metal racking to prop up your panels. Often these systems don't need to be attached to your ???



Solar panel steel structures are a vital component of the solar panel installation process. So, providing a safe and efficient way to generate clean energy. By understanding the benefits, design considerations, ???



There are some kinds of accessories for solar panel mounting system like C shaped steel beam and Z beam steel, are more popular use for its installation and great flexibility. C SHAPED STEEL BEAM is a molding process that automatically completed by c purlin brackets forming machine according to the given size, it is generally divided into



Deciding to install a solar system is only the first step. Solar panel installation constitutes a substantial project with significant financial implications, entailing numerous subsequent decisions.. This article explores the solar panel mounting brackets for solar installation and the key factors to consider. Amidst the vast options, understanding the ???

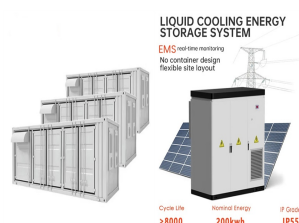
C-SHAPED STEEL AND PHOTOVOLTAIC PANEL INSTALLATION



Materials Used in Solar Steel Panel Mounting Structures. There are several materials used in mounting structures for solar products, including the following: Cold-Formed Steel (CFS): This material has high strength, a long lifespan, and affordability. It is frequently used for solar panel systems that are roof-mounted and ground-mounted.



Based on the research characteristics of the C-shaped steel structure of the photovoltaic agricultural greenhouse, the stress and strain under the design load of the solar cell module support are



Hot-dip galvanized solar photovoltaic panel bracket C-shaped steel. Overview. Carbon steel Ground Mounting system is the most economical and reliable ground mounting bracket solution. The structure is high-quality Carbon Steel to make sure will sustain strong wind load and snow load resistance.



Kalypso(R) is a support system for PV modules which are fixed on pre-painted steel sandwich panels using the innovative and patented Ondafix(R) fixing rail. High performance sandwich panels with a 60 um paint coating, Hairexcel(R), are available in a wide variety of colours to match roof design. Quick and easy to install, Kalypso(R) is



Step 1: Open the pre-assembled structure: Unpack and unfold the pre-assembled structure, ensuring all components are intact and undamaged.. Step 2: Fix to the ground: Position the structure in the desired location and align it according to ???

C-SHAPED STEEL AND PHOTOVOLTAIC PANEL INSTALLATION



Choose high quality Solar panel rack forming machine from Hangzhou Solar panel rack forming machine company with competitive price, both standard and non-standard to choose from. 17 Years" experience of manufacturing and ???



In any solar panel installation system, the support system is a key component that holds the panels in place. - The solar panel support steel C channel also features corrosion resistance, which is crucial in high humidity or saline environments. The design of the galvanized GI steel C-shaped channel allows it to be easily integrated



Steel profiles have a long lifespan and can withstand extreme weather conditions, making them a reliable choice for long-term solar power investments.. In addition, the strong properties of steel ensure that solar panels remain safe and stable, even during high wind speeds. With our steel profiles, you can rely on a robust and reliable solution for your solar projects



Solar panel installation: used to secure panels to mounts. Connecting mount components: for joining various sections when constructing mounting structures. c. Stainless Steel Advantages: Corrosion Resistance: ???

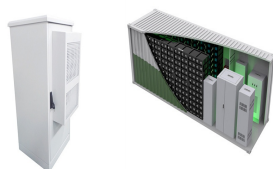


In the photovoltaic (PV) solar power plant projects, PV solar panel (SP) support structure is one of the main elements and limited numerical studies exist on PVSP ground mounting steel frames to

C-SHAPED STEEL AND PHOTOVOLTAIC PANEL INSTALLATION



C-Pile Foundation: C-shaped steel piles are used as a support structure to provide a solid foundation by driving into the ground. The N-Type Solar Ground Mount Racking System is a type of racking structure designed for ground-mounted solar panel installation. This system is typically made of aluminum alloy, which is lightweight, high



Structural Integrity: The C-shaped steel design provides exceptional structural integrity, ensuring stability and safety for the PV panels over time. **Versatility in Installation:** This system is suitable for various terrains, including flat and sloped surfaces, making it highly versatile for different installation sites.



Galvanized solar panel mounting brackets, HDG PV mounting system, solar mount with HDG steel. HDG PV mounting system designed and manufactured by hot dipped galvanized solar ground mounting system can be adapted to the specific conditions of each project. It is an economical installation solution that can easily install HDG steel structures.



This design is highly versatile and adaptable, accommodating various panel widths for rapid installation and removal, significantly reducing on-site construction time. For ground mounted PV power plants, the simple, easy-to-install C-Profile Steel PV mounting system is an ideal choice.