

CAN CAMPING ENERGY STORAGE EQUIPMENT STORE COLD



Do you need RV battery winter storage? When winter rolls in, one essential part for many RV enthusiasts is RV battery winter storage. Whether you use lithium batteries or traditional lead-acid, storing them correctly during cold weather can extend their lifespan and keep your RV ready for adventure when spring arrives.



Can I store my RV outside for the winter? Ideally, we'd all have an indoor space to store our RVs for the winter, but that's not always possible. If you're storing your RV outside for the winter, we highly recommend using a breathable cover designed for your camper size and style (fifth wheel, travel trailer, etc).



How to store RV batteries? Let's take a look at the three methods I recommend to store your RV batteries. 1. Keep The Charger Running All Winter (Lead Acid) In most cases, you should store your RV batteries at full charge. A charged battery is less susceptible to freezing, and it minimizes the risk of sulfation.



Should you store a lithium battery in the winter? For RV owners using lithium batteries, proper winter storage offers several benefits: Extended Lifespan: A well-maintained lithium battery can last several years longer than those left unattended in harsh conditions.



Can A LiFePO4 battery survive winter storage? A well-charged LiFePO4 battery can survive winter storage in freezing temperatures. Make sure batteries are stored with enough charge to ensure that small voltage drops over the winter won't take the battery's state of charge down too low. Many Lithium RV battery manufacturers recommend charging them to between 50%- 100%.

CAN CAMPING ENERGY STORAGE EQUIPMENT STORE COLD



What temperature should a lithium RV battery be stored? Most lithium RV battery manufacturers will give you ideal temperature ranges. For instance, Battle Born notes that their batteries can be stored in temperatures down to -10°F.



How do you blow out your RV water lines? Should RV batteries be removed for the winter? We've answered the most common questions we receive about proper RV storage practices. But we've also created a printable checklist for ???



Latent heat/cold stores for pumped-thermal energy storage are experimentally studied. [43]] have been carried out so far, there still exist a large gap between equipment ???



A Cold Store is a Specialised Area to Minimize the respiration rate and increase the life span of the product for future use. " This paper includes the cold storage capacity of India and the



The energy efficiency of the cold stores examined was found to vary widely and this could not be attributed to either temperature of the store or product throughput. Cold storage rooms consume

CAN CAMPING ENERGY STORAGE EQUIPMENT STORE COLD



Cold storage warehousing is a specialized type of warehousing designed to store and preserve goods that require controlled temperature conditions. These warehouses go beyond traditional storage facilities, as they are equipped with ???



"Cold Storage" typically refers to that part of the global cold chain (see Food & Beverage image below) that provides refrigerated warehouse storage with multiple temperature and humidity zones for products and ???



Winter might keep you out of the cold for now, but your camping gear will be patiently awaiting the call of the wild. Brace yourself for winter by following this camping gear storage guide. Make sure your gear is ready and in top shape ???



Receiving cold products is an essential part of the cold storage process, and having the right equipment can make a big difference in the efficiency and quality of your operations. From temperature-controlled docks ???



Cold thermal energy storage (CTES) is a technology that relies on storing thermal energy at a time of low demand for refrigeration and then using this energy at peak hours to help reduce the electricity consumption of the ???

CAN CAMPING ENERGY STORAGE EQUIPMENT STORE COLD



Correct RV battery storage is crucial to prevent irreversible damage during the colder months. If you're wondering how to protect your batteries from damage, you've come to the right place. Below, we discuss how ???



Portable solar panels can be set up in the sunniest area of your camp to take the best advantage of the available sunlight. Of course, you have to rely on sunny days for electricity, and that's why you need battery storage as ???



Can energy storage technology work with all fuel sources? Absolutely. Energy Storage has direct synergies with intermittent, renewable resources such as solar or wind power, because it can store excess energy for later use when the sun ???



The cold chain is believed to be responsible for approximately 2.5% of global greenhouse gas emissions through direct and indirect (energy consumption) effects [1]. Cold ???



Portable power for camping refers to compact, lightweight energy solutions designed to meet various outdoor electricity needs. These devices store energy in rechargeable batteries, which can be converted into usable power ???

CAN CAMPING ENERGY STORAGE EQUIPMENT STORE COLD



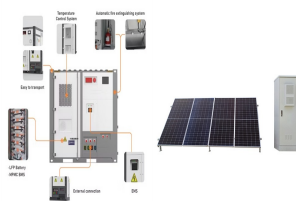
The cold storage of dried/dehydrated vegetables in order to maintain vitamin C, storage temperature can be varied with storage time and can be at 0?-10?C for a storage time of more than one year



Make sure batteries are stored with enough charge to ensure that small voltage drops over the winter won't take the battery's state of charge down too low. Many Lithium RV battery manufacturers recommend charging them to ???



Those who can't use plant-attached cold storage resort to using public refrigerated warehousing or a custom cold storage facility from third-party logistics providers. Benefits of Cold Storage. Cold storage is the most effective means ???



Phase change cold storage technology means that when the power load is low at night, that is, during a period of low electricity prices, the refrigeration system operates, stores ???



Use a thermometer to periodically check the temperature to ensure a safe cold-holding temperature is being maintained no matter what type of equipment you are using for cold food storage.. It should be at or below 40? F ???