

CAN PHOTOVOLTAIC PANELS BE INSTALLED DO THEY HAVE RADIATION



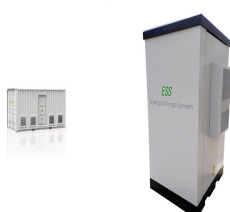
Should you worry about solar panel radiation? It's time we finally talk about solar panel radiation, and whether or not that should be a concern for you. Over the last 5-10 years, the cost of installing a solar panel system in your home has gone down significantly. This means that the money you save from free energy generated by the solar panels



Do photovoltaic solar panels emit electromagnetic radiation? In reality, the minor electromagnetic radiation created by (PV) photovoltaic solar panels is no different, and even less present, than the RF (radiofrequency) radiation emitted from the power lines connecting your property to the energy grid.



Can a solar panel inverter emit radiofrequency radiation? They could be ???micro-inverters??? inside or under the solar panels but are still connected to a larger inverter. Whatever way your solar panel inverter is installed, it can still emit radiofrequency radiation as a byproduct of converting electricity into alternating current.



Do solar panels emit harmful radiation? Contrary to popular belief, solar panels do not emit harmful radiation. The confusion arises from the misconception that solar panels emit ionizing radiation, similar to X-rays or nuclear radiation. In reality, solar panels emit only non-ionizing radiation, which is considered safe for human exposure.



Do solar panels emit ionizing radiation? In reality, solar panels emit only non-ionizing radiation, which is considered safe for human exposure. Non-ionizing radiation refers to electromagnetic radiation that does not have sufficient energy to remove electrons from atoms or molecules. Solar panels primarily emit infrared radiation, which is a form of non-ionizing radiation.

CAN PHOTOVOLTAIC PANELS BE INSTALLED DO THEY HAVE RADIATION



Do solar panels emit radiation or EMF? Solar panels do emit radiation or EMF from other components, such as the inverter unit and smart meters, in a solar panel system.



Solar panels have become a popular option for homeowners looking to reduce their carbon footprint and energy costs. However, as more people install solar panels on their roofs, questions have arisen about the potential health risks associated with exposure to electromagnetic fields (EMFs) emitted by the panels. In this blog post, we will explore whether ???



Solar panel installation is generally simpler if you own your home; however, if you're a leaseholder or in a shared-ownership property, you may be able to install solar PV with the permission of your freeholder or landlord. Solar panels can ???



A south facing solar PV system will tend to generate more around noon. The sun rises in the east and so east-facing PV panels will have maximum generation part-way through the morning. A west-facing array will tend to generate most electricity part-way through the ???



Tips for a Healthy and Safe Solar Panel Installation. which is then used to power electrical devices or stored in batteries for later use. Solar panels do not have any moving parts, and they operate silently, making them a reliable and low-maintenance energy solution. is considered safe for human exposure. By understanding the facts and

CAN PHOTOVOLTAIC PANELS BE INSTALLED DO THEY HAVE RADIATION



Solar electric panels (also called solar cells or photovoltaic cells) that convert sunlight to electricity are only just becoming really popular; solar thermal panels, which use sunlight to produce hot water, have been commonplace for decades. Even in relatively cold, northern climates, solar hot-water systems can chop significant amounts off your fuel bills.



How much electricity can be derived from a photovoltaic system, and under what conditions, depends strictly on the solar panel. For this reason, research is directed mainly toward three goals: improving conversion efficiency (i.e., more electric watts at the same irradiance), increasing the usable angle from which to receive the sun's rays, and increasing panel durability.



Types of solar panels. The type of solar panels you get can affect electricity output, since some solar panel types are more efficient than others.. A solar panel's efficiency indicates how well it converts sunlight into electricity. The higher the efficiency rating, the more electricity it will produce per square metre. Here's what you can expect from different solar ???



The solar panels that you see on power stations and satellites are also called photovoltaic (PV) panels, or photovoltaic cells, which as the name implies (photo meaning "light" and voltaic meaning "electricity"), convert sunlight directly into electricity. A module is a group of panels connected electrically and packaged into a frame (more commonly known as a solar ???



3 The perspective of solar energy. Solar energy investments can meet energy targets and environmental protection by reducing carbon emissions while having no detrimental influence on the country's development [32, 34] countries located in the "Sunbelt", there is huge potential for solar energy, where there is a year-round abundance of solar global horizontal ???

CAN PHOTOVOLTAIC PANELS BE INSTALLED DO THEY HAVE RADIATION



How do PV cells work, and what do they do? PV cells, or solar cells, generate electricity by absorbing sunlight and using the light energy to create an electrical current. The process of how PV cells work can be broken down into three basic steps: first, a PV cell absorbs light and knocks electrons loose. Then, an electric current is created by



What are the Factors Affecting Solar Panel Efficiency? Solar panel efficiency isn't solely dependent on the sun but there are many other factors affecting solar panel efficiency. Let's learn about all these factors in detail. 1. Climatic Conditions. Another major impact on efficiency is due to climatic conditions.



Do solar panels work when it snows? Yes, solar panels do produce power in snowy conditions - as long as the snow isn't too heavy. Actually, one of the lesser known facts about solar panels is that they work more ideally in colder weather as opposed to hotter temperatures.. Sunlight can pass through a light dusting of snow, so your solar panel system will generate solar electricity ???

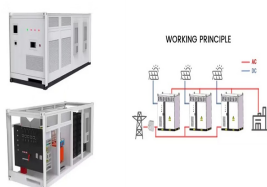


When looking for a house to live in, recently, I noticed that those with solar panels made me VERY ill, within seconds. As I own a rf (radio-frequency radiation) meter (a Cornet 88T Plus), I began measuring these sorts of homes. What I found was a significant increase in rf radiation (from hundreds to thousands of times higher) inside solar homes, with no other possible sources.



Electromagnetic Radiation from Solar Panels. One of the primary concerns people bring us is about the electromagnetic radiation emitted by solar panels. If you're unfamiliar with the term, electromagnetic radiation is ???

CAN PHOTOVOLTAIC PANELS BE INSTALLED DO THEY HAVE RADIATION



Before learning about the EMF radiation emission from a solar panel system, you need to understand how the system works. Any solar panel system can be divided into three distinct components ??? the solar panels themselves, the ???



Solar panel systems are not linked to causing health problems in adults or children. Living with solar panels on your roof does not put you in any danger of radiation-caused cancer or other illness. Electrical appliances such as shavers, hairdryers, and electric blankets ???



The solar panels themselves do not emit radiation; and if they do, they only produce a very small amount. Whatever way your solar panel inverter is installed, it can still emit radiofrequency radiation as a byproduct of converting electricity into alternating current. Some people who have solar panels, or are neighbors with a solar panel



While solar trackers will increase the solar panel system's energy production, they are very expensive and can potentially double the cost of installing solar panels. In many cases, it is cheaper to install more solar panels to increase the system's energy output than it ???



More than 1.3 million UK households now have solar panels. A typical three-bedroom home will save up to ?454 a year on its energy bill with a solar panel system. Solar panels can help you cut your carbon emissions by around 12% annually. More than 1.3 million UK households now have solar panels installed and their popularity is only set to increase ??? which ???

CAN PHOTOVOLTAIC PANELS BE INSTALLED DO THEY HAVE RADIATION



Solar panels are most effective in direct sunlight, but they do still work on cloudy days. Although the efficiency of solar panels decreases in cloudy conditions, they can still produce about 10-25% of their rated capacity, ???



They could deliver the same capacity as their much bulkier glass PV panels. Over the past five years, PV panels have become thinner, more efficient, and more affordable. They have been applied to smaller systems like traffic lights, rooftops, and windows on skyscrapers to make those buildings self-sufficient.



Well, good news ??? we're here to tell you that solar panels are super safe and they improve human health outcomes overall. Here's why. Electromagnetic Radiation from Solar Panels. One of the primary concerns ???



Solar Photovoltaic (PV) panels are generally installed on a roof and use the energy from the sun to power any electrical appliance in your home, including electric radiators. This electricity is free to produce and is great for the environment as no carbon is given off during the production process, unlike electricity produced by a typical electricity provider.

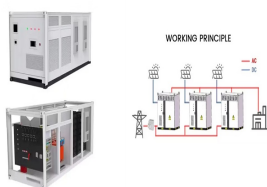


Do solar panels have electromagnetic radiation? One of the most common concerns is the potential for solar panels to emit harmful electromagnetic fields (EMFs) or radiation. Since solar systems generate ???

CAN PHOTOVOLTAIC PANELS BE INSTALLED DO THEY HAVE RADIATION



The results show that the sunshine duration is an important factor affecting the solar radiation received by photovoltaic panels. In regions from 66°34'N to 66°34'S, intelligent light



Any implementation of a sustainable photovoltaic solar energy system implies the optimization of the resources to be used. Therefore, it is the basis for the design and assembly of solar installations to optimize renewable ???



The final and least known solar panel is the hybrid panel, bearing a name that reflects its versatility. This panel has the unique property of combining the advantages of photovoltaic and thermal systems, thus ???

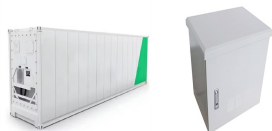


Solar panels are a form of renewable energy that captures the solar radiation of the sun and converts it into electricity. PV systems can be: causing damage to not just the PV installation, but the building on which they ???



6 ? The radiation emitted by solar panels is primarily electromagnetic radiation, which is harmless to humans. This electromagnetic radiation originates mainly from the semiconductor ???

CAN PHOTOVOLTAIC PANELS BE INSTALLED DO THEY HAVE RADIATION



Consultation with Experts: Engaging professionals to assess EMF levels can offer reassurance and guidance on safe solar panel use. Key Detail: The type of radiation from solar panels is non-ionizing, which does not ???



GTI is an approximate value for the energy yield calculation of fixed-installed tilted PV panels. GTI generally stands for Global Tilted Irradiance, which represents irradiation that falls on an inclined surface. Do they have the desire to measure solar radiation? People have been measuring the energy coming from the sun for centuries, and



In short, solar panels do not produce harmful ionizing radiation, and the intensity of their electromagnetic radiation is very weak and will not cause harm to the human body. Therefore, when using solar panels, we don't have to worry about their radiation. In addition, the use of solar panels has many other advantages.