

CAN PHOTOVOLTAIC PANELS BE INSTALLED ON POWER LINES



Can solar panels be installed on a roof? Your installers will usually need to erect scaffolding to install solar panels on your roof. Once this is up, solar panels can be installed in a day or two. The inverter will usually be fitted in either a loft or garage. This converts the DC your panels produce to AC that you can use in your home.



What is a solar PV system? power being generated by solar panels or be used in a home. Here are some quick definitions to help you. Solar photovoltaic (PV) systems are made up of several panels. Each panel has many cells made from layers of semi-conducting material, usually silicon.



Can solar panels be installed on a house? Solar photovoltaic (PV) panels can be installed on a wide range of homes. We've heard from people installing solar panels on bungalows and terraces, as well as semi-detached and detached houses. If your main house roof is unsuitable (a thatched roof, for example), solar panels can instead be installed on a garage or other outbuilding.



Are solar panels right for my home? If solar panels are right for your home. Do I have enough space? Solar panels can be designed to fit the space you have, accommodating for chimneys and unusual roof shapes. The average 3.5kWp solar PV system will take up around 20m² or



Does shade affect solar panels' power output? Any shade will affect solar panels' power output. Solar panel installation is generally simpler if you own your home; however, if you're a leaseholder or in a shared-ownership property, you may be able to install solar PV with the permission of your freeholder or landlord.

CAN PHOTOVOLTAIC PANELS BE INSTALLED ON POWER LINES



Should you install solar panels again if you move home? Imagining your house filled with mess from a lengthy installation could be enough to put you off considering solar panels. But few owners complained to us about the installation being disruptive, and 80% said that they'd install solar panels again if they moved home.



Why don't solar panels work in a blackout? Most homeowners with solar on their homes have what is called a "grid-tied" solar system, which means the panels are connected to an inverter.. The inverter is connected to the main AC panel in the house and to a special ???



Is your roof shaded? Any shade will affect solar panels' power output. Solar panel installation is generally simpler if you own your home; however, if you're a leaseholder or in a shared-ownership property, you may be able to install solar ???



Do solar panels work in a power cut? Solar panels can work in a power cut ??? but only if your installer sets them up with that capability. Most solar panel systems will automatically switch off when a power cut happens, but for an additional cost, your installer can fit the system with a relay that enables it to send energy from your solar battery to your home ???



installed "on site", solar PV panels can make a strong statement about an organisation's commitment to reducing its done carefully and in line with planning and faculty regulations. The financial benefit that a PV system can bring is directly linked to the size of the system that can be installed and the amount of power consumed

CAN PHOTOVOLTAIC PANELS BE INSTALLED ON POWER LINES



This guide focuses on solar panel systems, which generate electricity to power your lights, sockets and appliances but there are also other solar systems that you can use to heat your ???



Legal and Planning Permissions Associated with a Solar Panel System UK. Solar Panel Legal and Planning for England. In England and Wales, the domestic installation of mounted solar panels is likely to be considered "permitted development", meaning there is no need to apply to the council for planning permission. However, some conditions must be met, ???



A solar thermal system may seem to be the same as solar panels, but they are quite different. While solar panels produce electricity, solar thermals heat water to be used in your hot water heater. While solar thermals can be more efficient and are reliable even on ???



These transient currents and voltages will appear at the equipment terminals and likely cause insulation and dielectric failures within the solar PV electrical and electronics components such as the PV panels, the ???



Monocrystalline solar panels are made from a single silicon crystal and tend to be more expensive but convert 15-24% of sunlight. Panel efficiency can impact the number of panels needed for your system and available space on your roof or property. More efficient panels mean you will need a smaller system to achieve the same energy output.

CAN PHOTOVOLTAIC PANELS BE INSTALLED ON POWER LINES



With over 2 million solar power installations distributed in the entire U.S., many people may have growing concerns over fire safety. And that poses the question, can solar panels cause fires? Remarkably, solar panel system fires are rare. Nevertheless, many homeowners and business owners like to be informed of all the risks, including solar panel fires.



Solar modules are designed to produce energy for 25 years or more and help you cut energy bills to your homes and businesses. Despite the need for a long-lasting, reliable solar installation, we still see many solar panel brands continue to race to the bottom to compete on price. As some brands cut corners on product quality to remain price-competitive, solar panels ???



Installing solar panels on a metal roof is a smart and sustainable way to power your home or business with renewable energy. Looking to reduce your environmental impact and boost your bottom line? The Thurrock Green Business Grant can help! Our brand new guide, A Consumer's Guide to Solar Panel Installation, provides you with all the



Any implementation of a sustainable photovoltaic solar energy system implies the optimization of the resources to be used. Therefore, it is the basis for the design and assembly of solar installations to optimize renewable energy production.. To achieve optimal conversion of solar energy, it is essential to know the solar path, the profile of the needs, and the ???



With the increasing demand for renewable energy, more homeowners in Cyprus are turning to photovoltaic systems to power their homes. However, installing a photovoltaic system can be a complex process. During the installation process, the photovoltaic panels are mounted on the roof or on a ground-mounted system, and the wiring and electrical

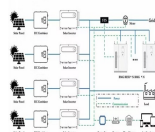
CAN PHOTOVOLTAIC PANELS BE INSTALLED ON POWER LINES



When deciding on a solar panel installation system for a rooftop, it's important to examine the roof's material and condition, and the concrete blocks used. Rooftop solar reduces your dependence on the grid and makes you less vulnerable to power outages. -Easy installation: Rooftop solar systems are relatively easy to install and can be done



Photovoltaic cells convert sunlight into electricity. A photovoltaic (PV) cell, commonly called a solar cell, is a nonmechanical device that converts sunlight directly into electricity. Some PV cells can convert artificial light into electricity. Sunlight is composed of photons, or particles of solar energy. These photons contain varying amounts of energy that ???



It is also used with commercial applications whenever the main panel can accommodate the PV backfeed current. The overcurrent protection devices are the main circuit breaker and the electrical panel's PV back feed circuit breaker. Line side tap can be installed without any line power shutdown by using B taps or pulling a meter. Reply #2



Solar panels are designed to absorb light ??? as the more light a panel absorbs, the more power it will generate ??? so glint and glare from them are not a problem. The solar industry has developed high-tech, anti-reflective ???

Commercial and Industrial ESS

- Budget Friendly Solution
- Renewable Energy Integration
- Modular Design for Flexible Expansion

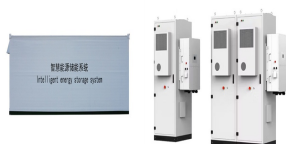


Flat roof solar panel mounting is usually done with ballasts, which can also incur extra costs during purchase. Ballasts can be around ?60 to ?120 per kilowatt on average but prices can vary based on sizes and whether they offer "universal" mounting or only mount certain ???

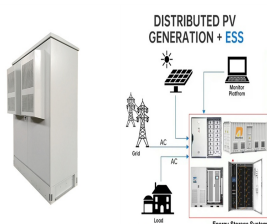
CAN PHOTOVOLTAIC PANELS BE INSTALLED ON POWER LINES



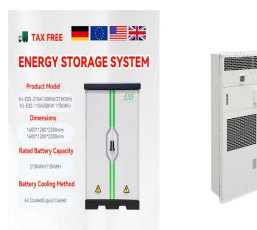
Solar Panels: Four 100-watt Thunderbolt panels from Harbor Freight, producing 18 volts at 5.6 amps each. Panel Configuration: Front two panels wired in parallel, back two panels wired in parallel, and then bringing those together in series. Power Analyzers: Used to measure voltage, amperage, and overall watt hours accumulated during the test.



Since panels are not as wide as they are tall, it takes fewer rails to install the panels in a vertical orientation than in a horizontal orientation. Less railing means less overall cost! The slant and size of your roof allow the panels ???



Case Study: solar panel installation for an average UK home. House type: Semi-detached; Solar panels: polycrystalline 4kW; Number of panels: 10-14; If you have a very large roof space you can opt for more low-power, low-cost panels and get a lower rate for the same overall system output.



For distributed photovoltaic power plant installed on the roof, if it is open without shade and has a tilt installation, the same as the ground power station. For there are poles or antennas and other vertical shading, and can not be avoided, if ???



Yes. There are well established industrial processes for this and, in most cases, up to 99% of the materials in a solar panel are recyclable. 1. Solar panels are usually made from silicon, or another semiconductor material, ???

CAN PHOTOVOLTAIC PANELS BE INSTALLED ON POWER LINES



It can be more cost-effective, because you're cutting out some of the materials too, for the post links, and you can go denser because of the integrating." Posts are still built out of the hill vertically. Panels installed on rolling hills follow the contours of the land, but technically remain flat relative to the ground.



What are the size limits? As a general rule (and as per the new AS/NSZ 4777 standard) most networks will allow system sizes as per the below: Single phase connection (most homes): Up to 5 kilowatts (5kW, or sometimes listed as 5kVA); Three-phase connection (some homes and many businesses): Up to 30kW (30kVA); In essence, most networks will have ???



This is because the vast majority of homes that install solar panels still draw power from the grid that the utility companies help operate. So why does your home need power from the grid after solar panel installation? ???



Solar panels are generally quite reliable. Many owners don't experience technical faults in over a decade of ownership. Nearly seven in 10 owners had had no problems with their solar panels in our survey of over 2,000 owners.* The most common ??? and most serious ??? problem owners face is with the