

CAN PHOTOVOLTAIC PANELS BE INSTALLED ON ROOFS THAT ARE NOT ACCESSIBLE TO PEOPLE



Do you need planning permission to install solar panels on your roof? An increasing number of people are investing in solar energy. More and more homes are having solar panels, or solar tiles, installed on their roofs. Of course, with such installations, the topic of planning permission and building regulations often comes to the surface.



Can a roof be suitable for solar panels? Even a roof that doesn't match the ideal requirements can still be suitable for solar panels. Part of the personal recommendation provided by Solar Together will be a breakdown of any additional costs needed to cover a variety of roofs. Often, roof characteristics will instead affect the output which solar panels generate.



Can you install solar panels on a roof in the UK? The majority of UK homes have a roof suitable for solar panel installation. Great news for anyone looking to generate their own renewable electricity. If you'd like to speak to an MCS certified (or equivalent) solar installer for advice you can get free no-obligation quotes from up to 4 solar installers in your area using Solar Guide.



Can a solar PV system be installed on a roof? In general, there should be no need to fret, as solar PV can be installed on almost any roof type. Most roof materials are suitable for a solar PV system. However, three types of roofing are excluded for the placement of a solar PV system: Thatch roofs: As this increases fire risk.



Where should a photovoltaic system be installed? The ideal place to put a photovoltaic system is on the rooftop, as it's generally the spot most exposed to the sun and would otherwise be unused space. But which types of roof are suitable for solar panels? The first step is to make sure you own your roof.

CAN PHOTOVOLTAIC PANELS BE INSTALLED ON ROOFS THAT ARE NOT ACCESSIBLE TO PEOPLE



How many solar panels can be installed on a roof? Your roof will need to be large enough to fit a suitable number of solar panels, as there's rarely much point putting just two or three panels up there. The average solar panel takes up 2m², and your installer should leave around 40cm on each side of the array, as well as 3cm between every panel.



The decision to install a photovoltaic system should not be taken lightly. Before making the commitment, it is essential to consider several factors to ensure that it is the right decision for your household. The photovoltaic panels are mounted on the roof or on a ground-mounted system, and the wiring and electrical components are installed



Mounting PV panels to the frame ??? during this stage, the installers mount the photovoltaic cells onto the roof frame with strong clamps. Connecting the panels to the inverter - The DC output of the solar panels is now wired to the inverter.



Solar panel problems are common. Nearly seven in 10 solar panel owners we surveyed have had no technical problems with their solar panel system since it was installed. Among those who did report a technical fault, inverter problems were by far the most common. Some 15% of owners in our survey reported an inverter problem.



All our solar panel installers are MCS-accredited and have years of experience working with slate roofs. Using specialised mounting systems designed for slate roofs and hiring our expert installers with ???

CAN PHOTOVOLTAIC PANELS BE INSTALLED ON ROOFS THAT ARE NOT ACCESSIBLE TO PEOPLE



Benefits of Installing Solar Panels on Flat Roofs Easier Installation and Maintenance. Flat roofs are more accessible than sloping roofs, so installation and maintenance are smooth and straightforward. Installers don't have to worry about angled surfaces, making placing and maintaining panel systems more effortless and cheaper.



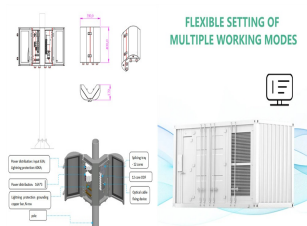
More than 1.3 million UK households now have solar panels. A typical three-bedroom home will save up to £454 a year on its energy bill with a solar panel system. Solar panels can help you cut your carbon emissions by ???



If you're considering installing a residential or commercial solar panel system, you might wonder if your roof type is appropriate for a solar installation. The good news is that solar panels can be installed on just about ???



We have experience in completing all kinds of solar panel installations, including fitting solar panels on slate roofs, integrated systems, and yes, even solar panels on metal roofs. We offer high-quality products, competitive prices, ???



Solar Panel Information. What are Roof Tile Solar Panels. Home; Solar Panels UK: A Guide for 2024 it can put a lot of people off the investment. This can be a particular issue in conservation areas of any kind as well. If this is the case, and you have faced trouble trying to get regular panels, then solar tiles might just be what you are

CAN PHOTOVOLTAIC PANELS BE INSTALLED ON ROOFS THAT ARE NOT ACCESSIBLE TO PEOPLE



There are a large number of formally approved solar panel installations in conservation areas, including on roofs that face the road. An increasing number of people are investing in solar energy. More and more homes are having solar panels, or solar tiles, installed on their roofs. installed on their roofs. Of course, with such



Assessment of Roof Suitability for Solar Panel Installation. Not all roofs, including tiled roofs, are suitable for solar panel installation. To determine if your slate roof is compatible, several factors must be considered. Firstly, assess its structural integrity as solar panels add weight to the roof. If needed, reinforce or repair any weak



For example, a typical 3-4 kW solar panel system in the UK may require around 20-25 square metres (215-270 square feet) of roof space, and a 4-5 kW system may require around 30-35 square metres (322-377 square feet) ???



The average cost to install a solar panel system on a metal roof is \$19,000. Considering how durable and long-lasting they are with minimal maintenance, this makes sense. Solar panels are relatively easy to install and can be done by most people with little to no experience. Ultimately, the best way to install solar panels on your roof is



How are solar panels installed? It's not always necessary to have solar panels installed on your roof; however, it is advantageous because it doesn't take up garden space or most roofs are angled in a way that helps ensure maximum sunlight. These 8 steps outline our team's solar panel installation process: 1. Construct the scaffolding

CAN PHOTOVOLTAIC PANELS BE INSTALLED ON ROOFS THAT ARE NOT ACCESSIBLE TO PEOPLE

114KWh ESS



In the past I've written about solar panel clamping zones which determine where, on a solar panel's edge, you can place the clamps that attach the modules to their mounting rails. What I didn't do was go into just where on ???



Solar panels can definitely be installed on a slate roof. It typically costs 30% more than a solar installation on a standard roof. The electricity bill savings more than make up for this higher price



Solar panels can be installed flat on a roof, but they will not be as efficient as if they were tilted. The screws or bolts attach to the solar panel frame. Some people use a sealant or adhesive to keep water from seeping ???



This is, in part, because not all homes are necessarily compatible with solar panel systems, and alternative green solutions may be better suited and more efficient. making the technology more accessible to a wider range of people. Installation costs are also reduced as solar panels can be installed at the same time roofing is installed



Roof Condition. Before installing solar panels, evaluate the condition of your metal roof. If it's nearing the end of its lifespan, consider replacing or renovating it before the solar panel installation. Maintenance. Though metal roofs require minimal maintenance, periodic inspections are vital. Check for any signs of corrosion, especially

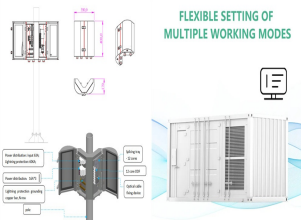
CAN PHOTOVOLTAIC PANELS BE INSTALLED ON ROOFS THAT ARE NOT ACCESSIBLE TO PEOPLE



This is because a solar panel system usually weighs about 20kg per square metre, which the great majority of roofs can hold. However, flat roofs may not always be strong enough for solar panels. Drilling into a flat roof can cause leaks, so an installer will usually ballast the panels instead ??? but these will add around 80kg per panel.



Ideally, install the inverter on an exterior wall between your solar panel's junction box and the main circuit breaker panel to your house. Some code's will require the inverter and your AC Disconnect switch to be within a certain distance of your electricity meter.



Regardless of whether or not planning permission is required for the installation of your solar panels, the installation itself is still subject to standard building regulations. You ???



Photovoltaic panels installed in-roof using GSE can be positioned in portrait or in landscape. The system can be installed on wood or metal structures and mounted on battens. Well priced, GSE integration kit is the most affordable in roof solar panel kit available, making it accessible for retrofits and new construction. See GSE's In-roof



The ideal pitch for a Solar Panel is around 30 degrees off the horizontal. Simply because this allows the panels to gain more exposure from the sun throughout the entire day. When installing Solar panels on a flat roof, this is easily achieved. As the Solar Panels are installed onto a bracket which tilts the panel to around 30 degrees.

CAN PHOTOVOLTAIC PANELS BE INSTALLED ON ROOFS THAT ARE NOT ACCESSIBLE TO PEOPLE



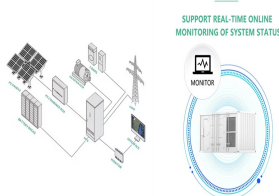
While having a south-facing roof is advantageous for solar panel installation, it's not a strict requirement. East and west-facing roofs can also provide substantial energy savings. The UK, with its long daylight hours and supportive government incentives, is an excellent place for adopting solar energy.



Your installer must gain building regulations approval from your local authority for their solar panel system plan before they can proceed. They will have to prove your roof can comfortably support the weight of your chosen ???



Despite the end of feed-in tariffs, you can still sell energy back to the grid. Financing plans can help you to spread the cost of solar panel installation; By HARVEY DORSET. Updated: 01:00 EST, 1

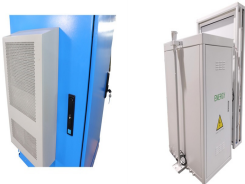


The great majority of UK roofs can support the typical weight of a solar array, which is around 200kg, but can't necessarily hold a tonne. Solar panels on a flat roof can also cast shade on each other, meaning they need to ???



Unfortunately, not every roof is suited to a solar panel installation. Ideally, a roof should be south-facing to reap maximum rewards from solar. However, east and west-facing roofs can still benefit significantly from solar, especially if utilising ???

CAN PHOTOVOLTAIC PANELS BE INSTALLED ON ROOFS THAT ARE NOT ACCESSIBLE TO PEOPLE



Reduced upfront costs: Solar panel grants lower the initial investment required for solar panels, making renewable energy more accessible to a wider range of households.; Enhanced return on investment: By ???



By using the right methods and equipment, these hurdles can be overcome to successfully add solar PV to a slate roof. How to Install Solar Panels on Slate Roofing. Here are the best practices slate roof owners and solar installers should follow: Step 1: Survey the roof and note any cracked, damaged, or fragile areas of slate to avoid.



This is to stop the roofers falling off the roof if the panels are close to the edge of the roof (the verge). The solar panel installers normally arrange the scaffolding. Typically, it goes up a day or two before the solar panel installation. 9 times out of 10, the company that puts the scaffolding up is a sub-contractor to the solar panel



DIY solar panel installation is an accessible way to lower bills, reduce carbon footprint, generate renewable electricity and gain self-sufficiency with the reassurance of knowing you'll always have additional energy to rely on when the sun is shining, even when you're not connected to mains electricity. Sunstore Solar can provide



Solar Panel Installation on a Metal Roof. Metal roofs have their own advantages while installing solar panels. Some justifications are given below: ??? 1. Durability. Metal roofs are strong, durable, and long-lasting with that one can achieve cost-effective solar energy as there is no need to replace the metal roof in a short interval. 2.