

CARS USING FLYWHEEL ENERGY STORAGE



The flywheel schematic shown in Fig. 11.1 can be considered as a system in which the flywheel rotor, defining storage, and the motor generator, defining power, are effectively separate machines that can be designed accordingly and matched to the application. This is not unlike pumped hydro or compressed air storage whereas for electrochemical storage, the ???



The flywheel energy storage but also for mainstream automotive applications This paper describes the Formula 1 system and the development of road car systems covering the energy storage



Flywheel technology has the potential to be a key part of our Energy Storage needs, writes Prof. Keith Robert Pullen: Electricity power systems are going through a major transition away from centralised fossil and nuclear based generation towards renewables, driven mainly by substantial cost reductions in solar PV and wind.



Today, flywheel energy storage systems are used for ride-through energy for a variety of demanding applications surpassing chemical batteries. A flywheel system stores energy mechanically in the form of kinetic energy by spinning a mass at high speed. Electrical inputs spin the flywheel rotor and keep it spinning until called upon to release

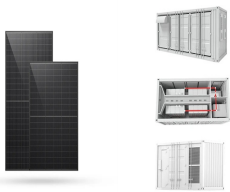


A review of energy storage types, applications and recent developments. S. Koochi-Fayegh, M.A. Rosen, in Journal of Energy Storage, 2020 2.4 Flywheel energy storage. Flywheel energy storage, also known as kinetic energy storage, is a form of mechanical energy storage that is a suitable to achieve the smooth operation of machines and to provide high power and energy ???

CARS USING FLYWHEEL ENERGY STORAGE



This review presents a detailed summary of the latest technologies used in flywheel energy storage systems (FESS). This paper covers the types of technologies and systems employed within FESS, the range of materials used in the production of FESS, and the reasons for the use of these materials. Furthermore, this paper provides an overview of the ???



A flywheel battery stores electric energy by converting it into kinetic energy using a motor to spin a rotor. The motor also works as a generator; the kinetic energy can be converted back to



storage technologies in electrical energy storage applications, as well as in transportation, military services, and space satellites [8]. With storage capabilities of up to 500 MJ and power ranges from kW to GW, they perform a variety of important energy storage applications in a power system [8,9]. The most common applications of ???ywheels



Abstract: - A new hybrid-drive system taking flywheel energy storage system instead of chemical battery as assistant power source for hybrid electric vehicle is put forward. According to the ???



A flywheel is not a flying wheel, though if things go sideways, it's possible to find flywheels mid-air. Flywheels are devices used to store energy and release it after smoothing eventual oscillations received during the charging process. Flywheels store energy in the form of rotational energy.. A flywheel is, in simple words, a massive rotating element that stores ???

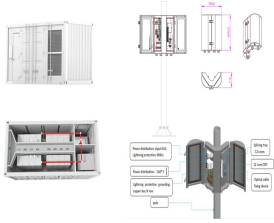


The flywheel energy storage system (FESS) offers a fast dynamic response, high power and energy densities, high efficiency, good reliability, long lifetime and low maintenance requirements, and is particularly suitable for applications where high power for short-time bursts

CARS USING FLYWHEEL ENERGY STORAGE

is demanded. FESS is gaining increasing attention and is regarded as a

CARS USING FLYWHEEL ENERGY STORAGE



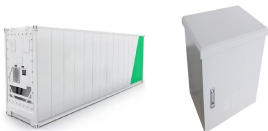
But Flybrid's innovations also address the need to create sufficient power storage density in a unit small enough and light enough for use in F1. To achieve this they upped the speed of the flywheel massively to 64,500rpm, which allows a smaller, lighter flywheel but also means it has to be contained in a very robust structure in case of failure.



A brief background: the underlying principle of the flywheel energy storage system often called the FES system or FESS is a long-established basic physics. Use the available energy to spin up a rotor wheel (gyro) via a motor/generator (M/G), which stores the energy in the rotating mass (Figure 1). Electronics is also required for the motor



Flywheel energy storage (FES) is a technology that stores kinetic energy through rotational motion. The stored energy can be used to generate electricity when needed. power density and fast charging capabilities make it an ideal candidate for providing quick bursts of power to electric cars. Renewable Energy Integration: FES can integrate



The operation of the electricity network has grown more complex due to the increased adoption of renewable energy resources, such as wind and solar power. Using energy storage technology can improve the stability and quality of the power grid. One such technology is flywheel energy storage systems (FESSs). Compared with other energy storage systems, ???



However, recent efforts are now aimed at reducing their operational expenditure and frequent replacements, as is the case with battery energy storage systems (BESSs). Flywheel energy storage systems (FESSs) satisfy the above constraints and allow frequent cycling of power without much retardation in its life span [1-3].

CARS USING FLYWHEEL ENERGY STORAGE



A flywheel energy storage system employed by NASA (Reference: wikipedia) How Flywheel Energy Storage Systems Work? Flywheel energy storage systems employ kinetic energy stored in a rotating mass to store energy with minimal frictional losses. An integrated motor/generator uses electric energy to propel the mass to speed. Using the same



Formula one cars use either a four flywheel or electric generator system to store energy under braking. This stored energy can then be utilized by the driver by pushing a button on thier steering wheel. B. Bolund, H. Bernhoff, and M. Leijon, "Flywheel energy and power storage systems," Renew. Sustain. Energy Rev., vol. 11, no. 2, pp



Another example is the friction motor which powers devices such as toy cars. In unstressed and inexpensive cases, to save on cost, the bulk of the mass of the flywheel is toward the rim of the wheel. Farmer, R. G. (April 2001). "A combined uninterruptible power supply and dynamic voltage compensator using a flywheel energy storage system



The Tesla flywheel concept makes the company very appealing to some investors. In fact, Canaccord Genuity estimates that Tesla will reach \$8 billion in revenue by 2025. Tesla Energy Storage



Flywheel energy storage systems (FESS) use electric energy input which is stored in the form of kinetic energy. Kinetic energy can be described as "energy of motion," in this case the motion of a spinning mass, called a rotor. The rotor spins in a nearly frictionless enclosure. When short-term backup power is required because utility power

CARS USING FLYWHEEL ENERGY STORAGE



Overview Applications Main components Physical characteristics Comparison to electric batteries See also Further reading External links



Ask the Chatbot a Question Ask the Chatbot a Question flywheel, heavy wheel attached to a rotating shaft so as to smooth out delivery of power from a motor to a machine. The inertia of the flywheel opposes and moderates fluctuations in the speed of the engine and stores the excess energy for intermittent use. To oppose speed fluctuations effectively, a flywheel is ???



Instead of parallel gasoline engine/electric motor drive systems combined with a battery, the 911 racer paired an internal combustion flat-six cylinder with an electro-mechanical flywheel



Flywheel energy storage systems have gained increased popularity as a method of environmentally friendly energy storage. Fly wheels store energy in mechanical rotational energy to be then converted into the required power form when required.



The principle of rotating mass causes energy to store in a flywheel by converting electrical energy into mechanical energy in the form of rotational kinetic energy. 39 The energy fed to an FESS is mostly dragged from an electrical energy source, which may or may not be connected to the grid. The speed of the flywheel increases and slows down as

CARS USING FLYWHEEL ENERGY STORAGE



with battery energy storage systems (BESSs). Flywheel energy storage systems (FESSs) satisfy the above constraints and allow frequent cycling of power without much retardation in its life span [1???3]. They have high efficiency and can work in a large range of temperatures [4] and can reduce the ramping of conventional