

COLUMN PHOTOVOLTAIC BRACKET



What is a photovoltaic mounting system? Photovoltaic mounting systems (also called solar module racking) are used to fix solar panels on surfaces like roofs, building facades, or the ground. These mounting systems generally enable retrofitting of solar panels on roofs or as part of the structure of the building (called BIPV).



What is a building integrated photovoltaic (BIPV)? It started feeding electricity to the National Grid in November 2005 Building-integrated photovoltaics (BIPV) are photovoltaic materials that are used to replace conventional building materials in parts of the building envelope such as the roof (tiles), skylights, or facades.



What is a ground mount PV system? Ground mounts are normally consist of steel held in concrete with aluminum rails holding up aluminum modules. There are ground mounts at the residential and commercial levels, but the systems are simply smaller and the number of PV modules per column may be less (e.g. 3).



Should a fixed PV module be tilted at the same angle? It is a common practice to tilt a fixed PV module (without solar tracker) at the same angle as the latitude of array's location to maximize the annual energy yield of module. For example, rooftop PV module at the tropics provides highest annual energy yield when inclination of panel surface is close to horizontal direction.



Can a PV system be installed on a flat roof? In all cases of retrofits particular consideration to weather sealing is necessary There are many low-weight designs for PV systems that can be used on either sloped or flat roofs (e.g. plastic wedges or the PV-pod), most however, rely on a type of extruded aluminum rails (e.g. Unirac).

COLUMN PHOTOVOLTAIC BRACKET



Can a solar array be mounted on a rooftop? The solar array of a PV system can be mounted on rooftops, generally with a few inches gap and parallel to the surface of the roof. If the rooftop is horizontal, the array is mounted with each panel aligned at an angle.



Key words: photovoltaic bracket, numerical simulation, overall stability, fixed, failure mode ? 1/4 ? ,, ???



Overview Mounting Orientation and inclination Shade PV Fencing Sound barriers See also



Ground mounting system is divided into three categories: single column bracket, double column bracket and single ground column bracket. Single-column bracket relies on a single row of column support, and each unit ???

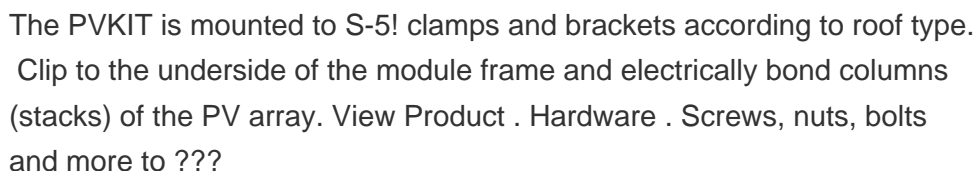
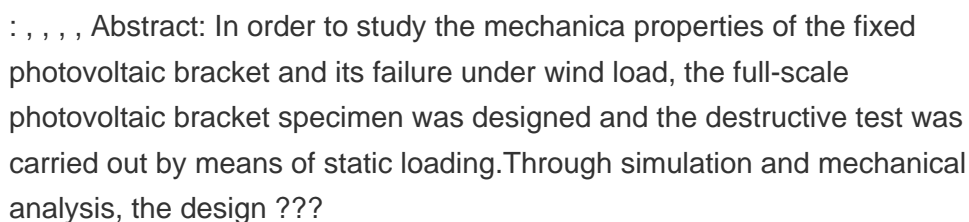
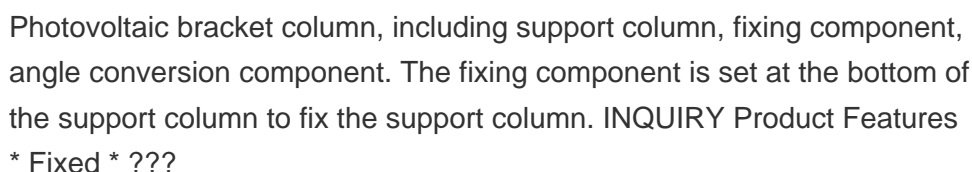
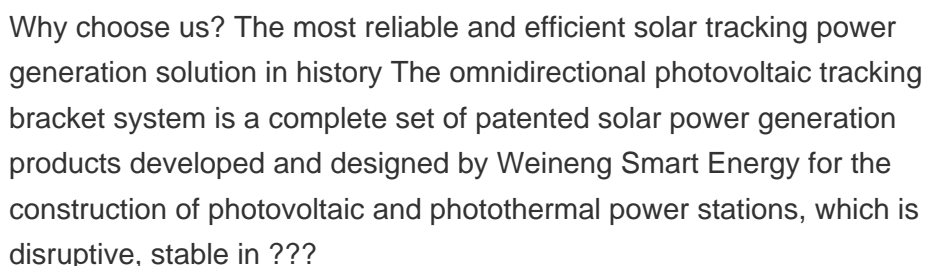
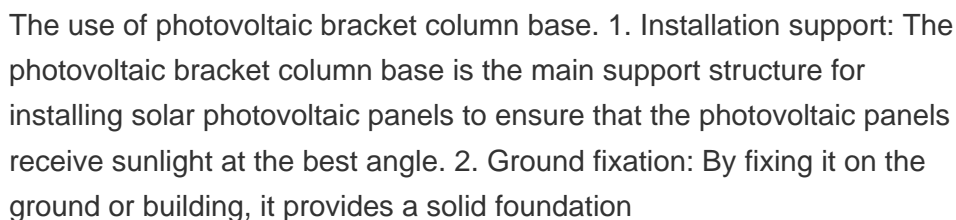


We combined our 3.1 rails with locally sourced 2-inch schedule 40 pipe to build a simple, low-cost structure with columns of 3 or 4 modules in landscape orientation. Pole Mount Side of Pole and Top of Pole options that accommodate modules from 10 watts to 300+ watts.

APPLICATION SCENARIOS



Photovoltaic Bracket -Nanjing Chinylion Metal Products Co., Ltd.-Photovoltaic bracket is mainly applicable to distributed power stations, rooftop power stations, household, commercial and other fields in the solar photovoltaic industry



COLUMN PHOTOVOLTAIC BRACKET



The single-column bracket is supported by only one single row of columns, and each unit has only a single row of bracket foundations. It mainly consists of columns, inclined supports, guide rails (beams), component ???



et al. conducted research on column biaxial solar photovoltaic brackets, studying the structural loads at different solar altitude and azimuth angles. Conduct static analysis and optimization design of the bracket based on the load. This optimization method can shorten the construction period and reduce costs to a certain extent[2]. Mao



1. Weight-lifting structure with 5 supporting points, shaped table design combined with a four-link age structure, driven by slewing drive. 2. Eliminates the water wave effect to prevent the impact of wind to the structure, eliminate the quiver and ensure the output efficiency of solar modules.

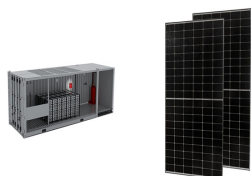


Photovoltaic bracket is mainly divided into single column and two kinds, two columns, and wherein the support strength of two column photovoltaic brackets is stronger, multiplex in the photovoltaic array of large-scale layout in blocks, and single column support is multiplex on small-sized, scattered photovoltaic module. Yet in actual use, a lot of occasions are often due to the ???



The installation selection of photovoltaic ground brackets is mainly based on factors such as the fixing method of the bracket, terrain requirements, material selection, and the weather resistance, strength, and stiffness of the bracket. First, there are many fixing methods, such as pile foundation method (direct burial method), concrete block weight method, pre-embedded method, ground ???

COLUMN PHOTOVOLTAIC BRACKET



The tracking photovoltaic support system utilizes a slender and elongated rotating main beam to support the entire PV array, which is connected to the ground through columns. The torsional stiffness of this structure primarily relies on the characteristics of the main beam, rather than the stiffness of the panels themselves [1] .

Single Column Bracket System. ???,PDF



The solar photovoltaic bracket is a kind of support structure. In order to get the maximum power output of the whole photovoltaic power generation system, we usually need to fix and place the solar panels with a certain orientation through the solar photovoltaic bracket. Column solar support. In order to meet the installation requirements



Vertical Column Tracking Photovoltaic Brackets with Fast Delivery Speed. US\$600.00-650.00 / Piece. 1 Piece (MOQ) Company Profile It is one of the largest professional manufacturers of photovoltaic brackets in China and the Asia-Pacific region. International Aluminum has introduced more than 200 sets of professional equipments, all-round



Photovoltaic flexible bracket is an emerging photovoltaic installation system, which is characterized by its flexibility and adaptability. Compared with traditional fixed photovoltaic brackets, flexible photovoltaic brackets can be flexibly adjusted according to terrain, lighting conditions, seasonal changes and other factors to maximize the power generation efficiency of ???

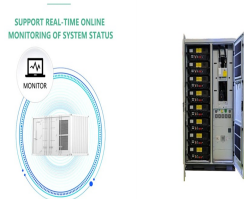
COLUMN PHOTOVOLTAIC BRACKET



Our rotating solar panel brackets have EFT series, while fixed solar panel brackets have single column EFS series and double columns EFD series. Our company can provide customers with solar panel brackets from R& D to system integration and other relative services.



The utility model discloses a basalt fiber photovoltaic bracket, belonging to the technical field of solar photovoltaic power generation; the utility model is provided with a plurality of cross beams and base columns which are arranged at two ends of the cross beams and used for obliquely supporting the cross beams; the side beams are arranged at two ends of the cross beam and ???



PV bracket is an important part of PV power station, carrying the main body of power generation of PV power station. 200*200 are driven into the soil, with steel plates or bolts reserved at the top to connect with the front and rear columns of the upper bracket, with a depth of generally less than 3 metres, which makes the construction

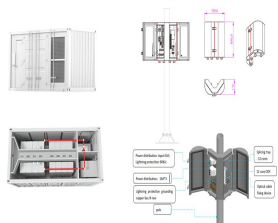


As the world's leading manufacturer and solution provider of photovoltaic brackets and BIPV systems, Shilden has been deeply involved in a segment in the middle reaches of the photovoltaic industry chain - brackets for 14 years, firmly occupying a place in the global photovoltaic industry. Its representative product tracking bracket system has



They are usually composed of concrete columns and steel bars to ensure the stability of the system in high wind speeds. 2??? The application of CHIKO Solar Energy in the field of photovoltaic brackets. CHIKO Solar is a world leading manufacturer of solar brackets, headquartered in Shanghai and established in 2010.

COLUMN PHOTOVOLTAIC BRACKET



Photovoltaic bracket type: double column fixed photovoltaic bracket. 03. Photovoltaic Parking Shed Project. The installed capacity of the PV parking shed project of Hongli Building in Shenzhou, Hebei is 328 kW with 90 parking spaces, which can generate 480,000 kWh of electricity per year. The company is acting as a general contractor for this



Photovoltaic bracket column, including support column, fixing component, angle conversion component. The fixing component is set at the bottom of the support column to fix the support column. INQUIRY Product Features
 * Fixed * connect firmly install quickly * Wide application, etc



The results show that: (1) according to the general requirements of 4 rows and 5 columns fixed photovoltaic support, the typical permanent load of the PV support is 4679.4 N, the wind load being 1



The column-to-base connection of the PV system consists of four parts: the post, rib plate, base plate, and anchor, as shown in Fig. 1. A post is a steel column that is connected ???